

RES 3700 Calendar Bug Workaround – Product Management

Applicable RES 3700 Versions:

5.0 and above

This step-by-step guide will walk you through how to apply workaround procedures within Product Management to minimize the functional impact of the RES 3700 calendar bug.

Required Tools:

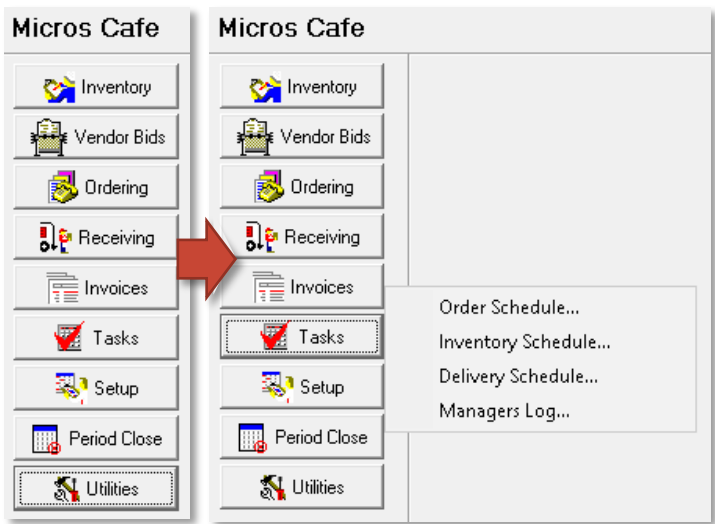
- Access to your RES 3700 Back-Office PC
- Access to Product Management with the ability to edit configuration

SUMMARY

The calendar selector tool is utilized in Product Management when a user attempts to configure an ordering schedule, inventory schedule, delivery schedule, and manager log. The workarounds presented in this document provide a path to continue configuring the schedules beyond 2020.

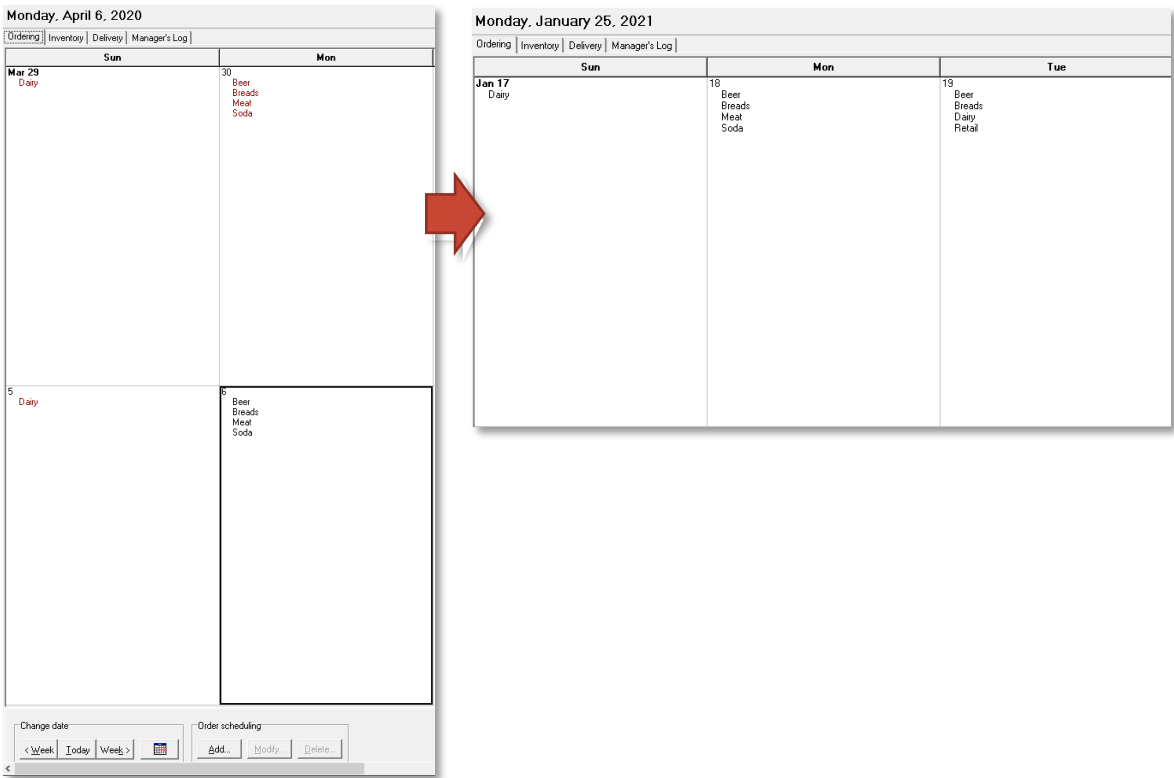
SETUP STEPS

First, navigate to the Product Management application on the Back-Office PC. Once there, select “Tasks” on the left-hand side to continue. Select either “Order Schedule”, “Inventory Schedule”, “Delivery Schedule”, or “Manager Log” to continue.



WORKAROUND STEPS

At the bottom of the screen, select the calendar icon to choose schedule dates. At this step, you will notice that the calendar selector tool will limit you to date selections in 2020 and years prior. To continue configuring, use the “Week” buttons across the bottom of the screen. Doing so will allow you to scroll week-by-week into 2021 and beyond.



Using the “week” buttons, you can continue creating schedules in Production Management.