



March 27th 2019

DIAMOND SPONSOR

FREEDOM.PAY



Safe Harbor Statement

The following is intended to outline our general product direction. It is intended for information purposes only, and may not be incorporated into any contract. It is not a commitment to deliver any material, code, or functionality, and should not be relied upon in making purchasing decisions. The development, release, timing, and pricing of any features or functionality described for Oracle's products may change and remains at the sole discretion of Oracle Corporation.

OPERA Cloud – Design Philosophy

Familiarity

Ease of
Adoption for
v5 users



Manage

Easy to manage your
properties and grow the
business



UI/UX

Simple & Clear
User Interaction
& Experience



Adapt

Customization &
Personalization where
it matters



Mobile

Key Screens designed
for Mobility

Customer 1st Design

Simple guest
interaction and
service across
the estate



Device

Use any Device & any
Browser – Fully Agnostic

Secure



#1 priority from design
to deployment to usage

Familiarity

Ease of
Adoption for
v5 users



Cleaned-Up Rate
Code Setup

v5 Terminology used where possible

v5 Functionality as basis with enhancements

Menu Design familiar to users

Simplify more complex tasks in v5 through better design

Helps 35,000+ v5 Hotels transition to OPERA Cloud

Create a New Rate Code

Help

Rate Code Definition

* Required Field

* Property

SFE



* Rate Code

* Start Sell Date

MM-DD-YYYY



* End Sell Date

MM-DD-YYYY



Protection Type



* Description

Manage Translations

* Room Types



* Rate Category



Market



Source



Display Set



Rate Group



Sequence

-

+

Financial Details

* Required Field

* Transaction Code



☐ Tax Inclusive

Plg Tran Code



Exchange Type



Commission Code



Commission %

-

+

Currency Code

EUR



Folio Text

Manage Translations

☐ Print Rate

☐ Suppress Rate

☐ Discount

☐ Day Use

☐ Complimentary

☐ House Use



Mobile

Key Screens designed
for Mobility

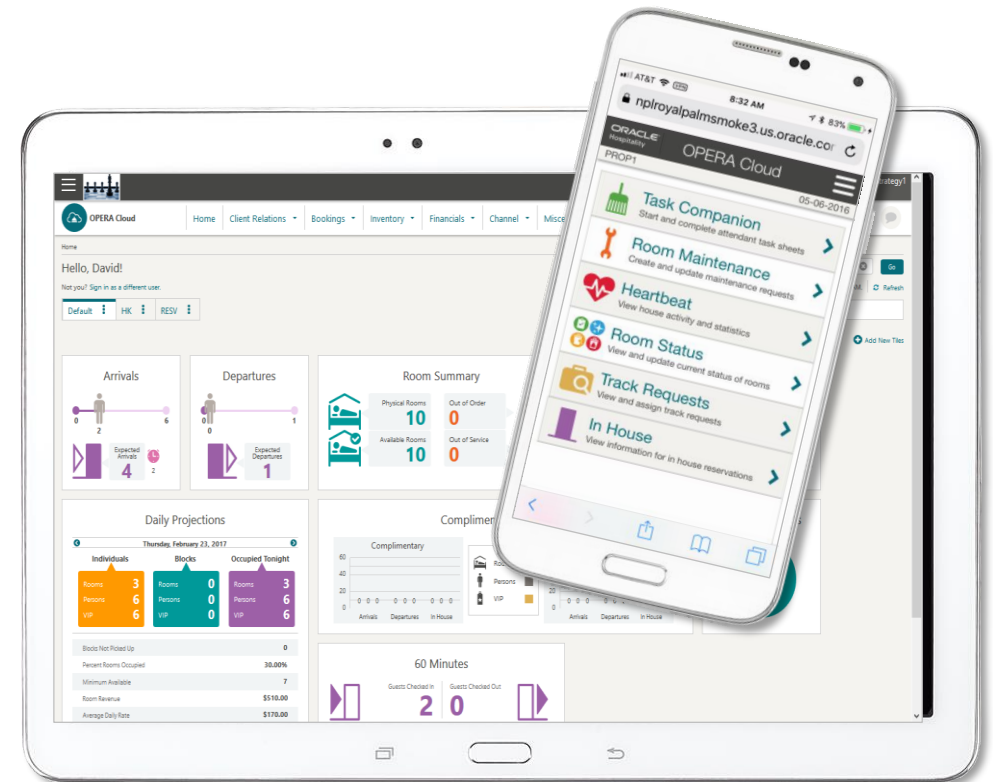
Full functionality on a tablet device

Peripheral support for tablets & Smartphones

Mobile Specific use cases for Smartphones

Support of Sales Teams & Event Teams on Mobile devices

No need for 3rd party applications to be mobile



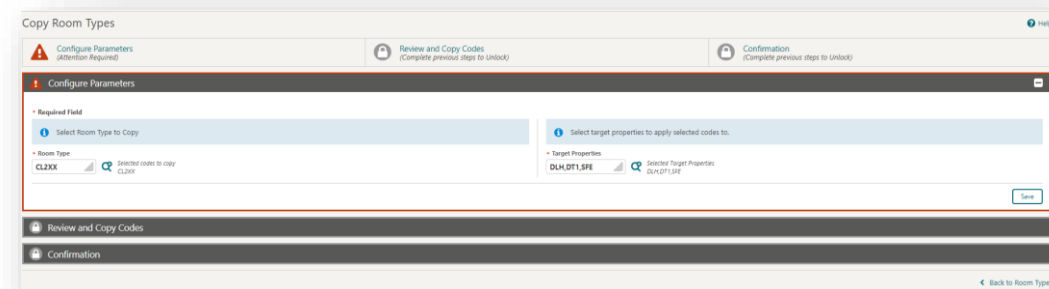
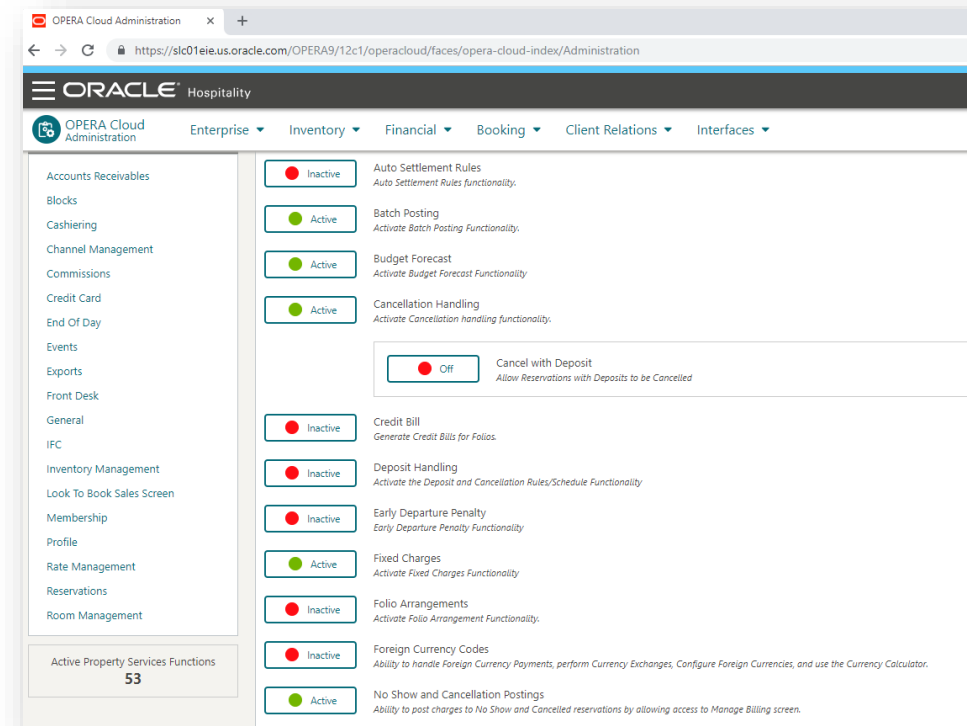


Simple one-stop-shop to manage configuration across estate

Manage the chain/brand/property from one area

Configuration Assistant simplifies building new properties

Clear & Simple OPERA Controls



Customer 1st Design

Simple guest
interaction and
service across
the estate



Business Card Header ensures key data is always visible

Profile Privacy/GDPR at the core

Consistency across all profile access areas

Improved Profile Match & Merge and De-Duping

Profile Insights through Data Science/AI

Business Card Header:

- Profile Type: Contact
- Language: E
- Title: Mrs.
- Position: ---
- Influence: ---
- Nationality: AM American
- Birth Date: ---
- Owner Code: ---
- Trace Code: ---
- Client ID: 1005228349
- Membership: 6743543674 Member Info
- VIP Status: VIP2 VIP Level 2
- Active: ☒
- Protected: ☐
- Restricted: ☐

Profile Section:

- Profile: Communication (5) | Identification | Keyword (2) | Membership (1) | Billing: Accounts Receivables (1) | Financials (2) | Stay: Future & Past Stays (24)
- Preferences (2) | Profile Details | Relationships (1)
- Notifications: Attachments (1)

Footer: Created 01-09-2019 14:46 By: DMH20H2BOLP | Updated 03-14-2019 13:03 By: EDG20H2BOLP

UI/UX

Simple & Clear
User Interaction
& Experience

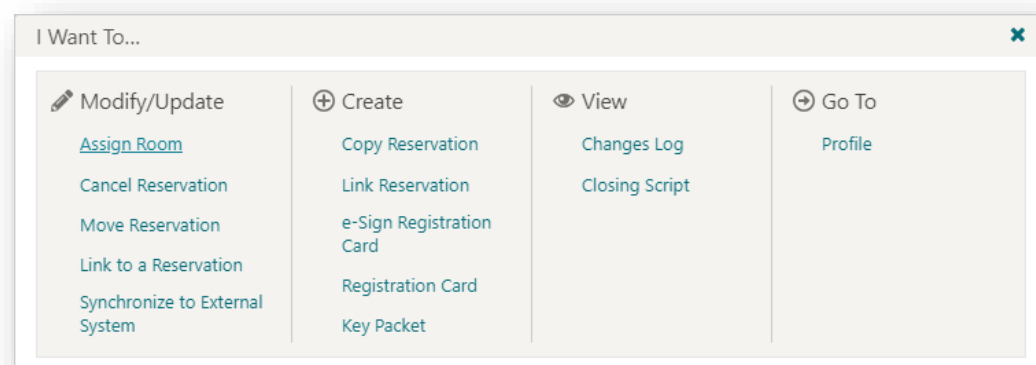


Ongoing Improvements to Usability

Dashboards for easy access to data with less navigation

Achieving ADA Compliancy for Screen Readers

Continuous Application Language Support





Device

Use any Device & any
Browser – Fully Agnostic

No More Browser Dependencies

Nothing Installed on Workstations (no more Java)

No Dependencies on Operating System

Removed Acrobat requirement

Plug-in and Go – saves IT hours!





Every User is Different



Personalisation

Every Hotel is Different



Customization



Personalisation: Search Results

Same Data Different View

Personalisation allows for user specific needs

Removes need to request development to move a field

Show as Much or as Little as needed

**“Personalisation”
= All User Specific**



Customization: Screen Design

Customization allows Hotels to truly customize to meet their need

No need for Oracle resources to design screens

Allows for different service levels of hotels to reside in one system

**“Customization”
= Chain/Hub/Property
Level**



Customization: Screen Design

Profiles

- Profile Overview
- Profile Details
- Identification (Personal Details)
- Create Profile (Guest Details)

Look To Book Sales Screen

- Caller Info
- LTB (Search filters)
- Book Now screen
- Turnaway

Reservations

- Reservation Overview
- Stay Details

Dashboard

- Page and Tiles

Check In

- Reservation Overview
- Identification Step (Personal Details)

Check Out

- Reservation Overview

Blocks

- Block Overview
- Room Details
- Catering Details

Quick Launch

- Custom and Quick Links

Search Areas

- Search filters
- Manage Columns

Secure



#1 priority from design
to deployment to usage

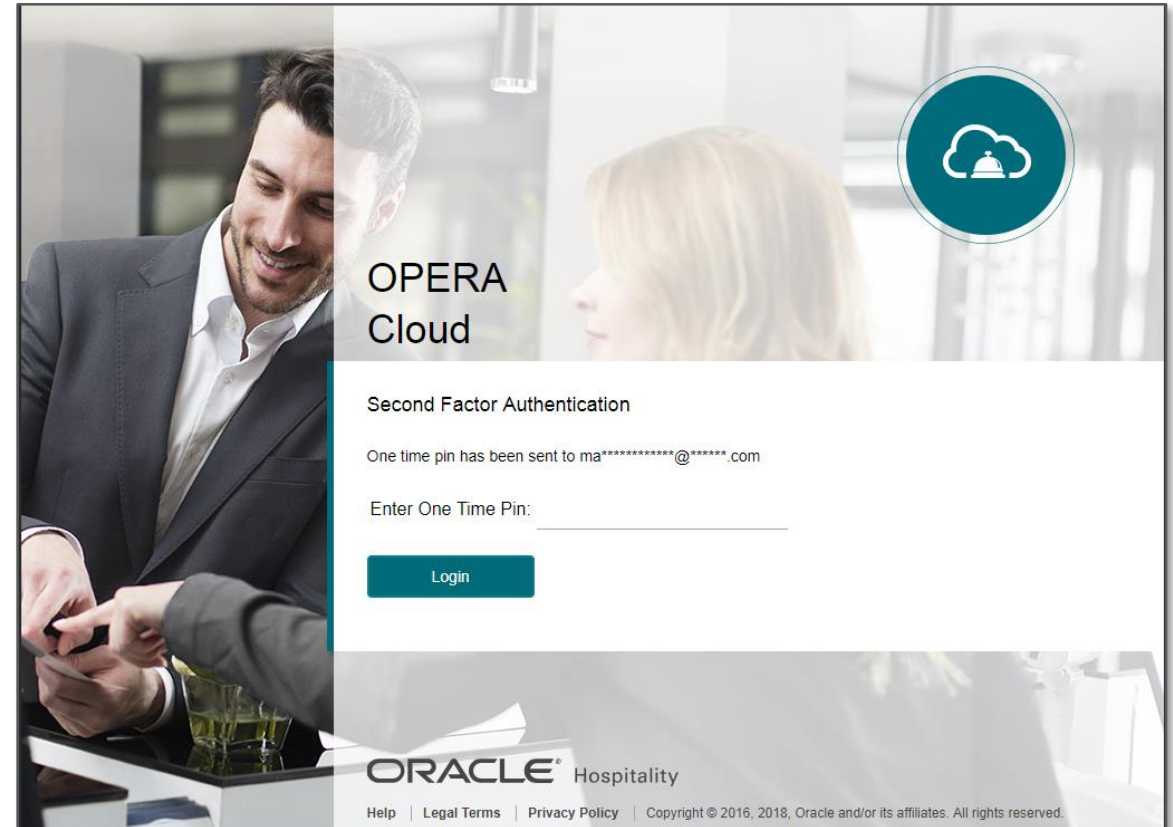
Multi-Factor Authentication available

Restrict Access based on IP Range or Days of the week

Forgot Password Reset

Takes User Management outside of OPERA to aid PCI audits

ORACLE
Hospitality



ORACLE

Secure

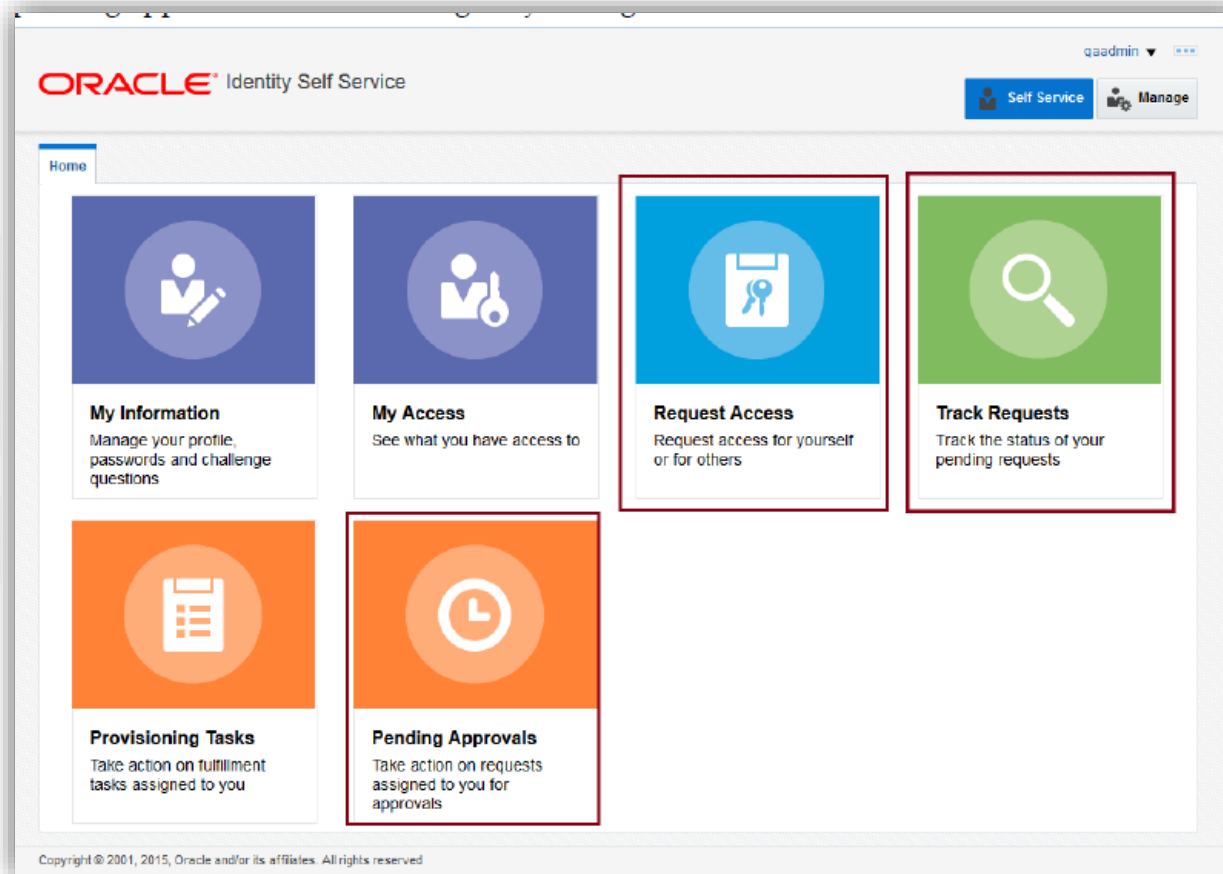


#1 priority from design
to deployment to usage

Simple management of new user requests through OIM

Remove the headache of password resets & locked accounts

Clear view of what tasks are assigned



OPERA Cloud – Design Philosophy

Familiarity

Ease of
Adoption for
v5 users



Manage

Easy to manage your
properties and grow the
business



UI/UX

Simple & Clear
User Interaction
& Experience



Adapt

Customization &
Personalization where
it matters



Mobile

Key Screens designed
for Mobility

Customer 1st Design

Simple guest
interaction and
service across
the estate



Device

Use any Device & any
Browser – Fully Agnostic

Secure



#1 priority from design
to deployment to usage

ORACLE®