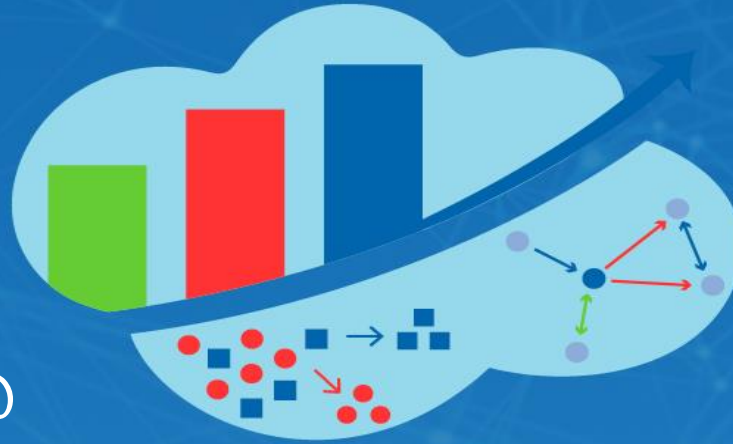


Spatial and Graph Summit @



# ANALYTICS AND DATA SUMMIT 2019

All Analytics. All Data. No Nonsense.  
March 12-14, 2019

## Oracle Cloud and National Mapping

- Éamonn Clinton, General Manager, Geospatial Services, Data Governance & Quality
- **Ordnance Survey Ireland**

# Ordnance Survey Ireland

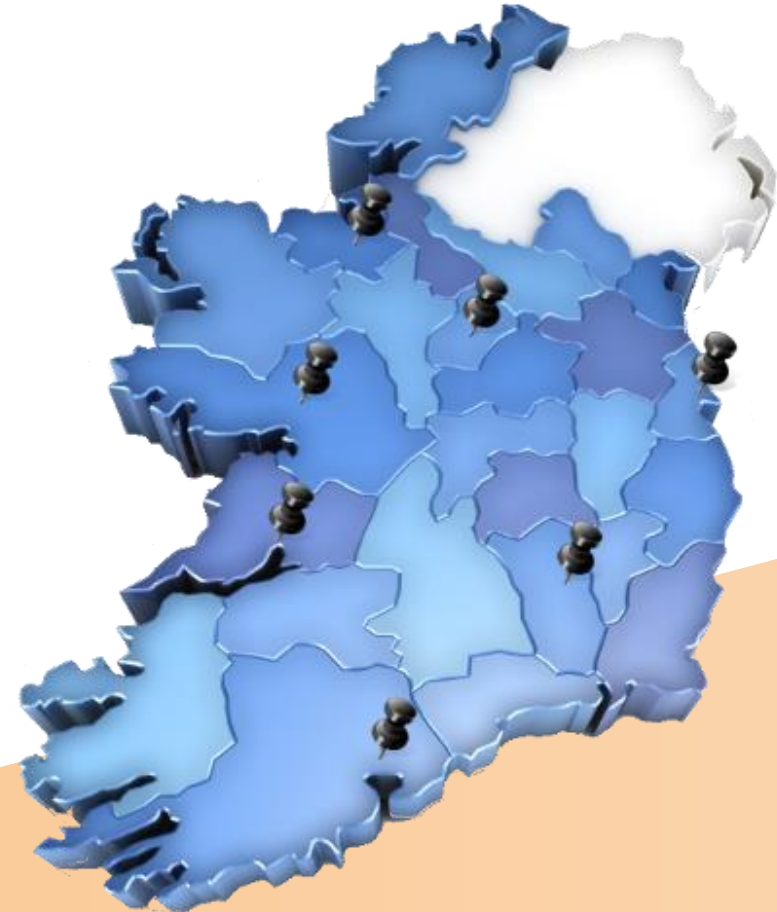


Rialtas na hÉireann  
Government of Ireland



- Ireland's National Mapping Agency
- Established in 1824
- Operates under the Ordnance Survey Ireland Act, 2001

**Mandate:** *"To provide a national mapping service in the State... creating and maintaining the definitive national mapping and related geographic records"*



# Ordnance Survey Ireland's use of OCI Proof of Value



Rialtas na hÉireann  
Government of Ireland

- Imagery Processing
- Point Cloud Generation
- Point Cloud Processing
- Positional Accuracy Improvement



# Imagery Processing



Rialtas na hÉireann  
Government of Ireland



# Hardware and Software Configuration

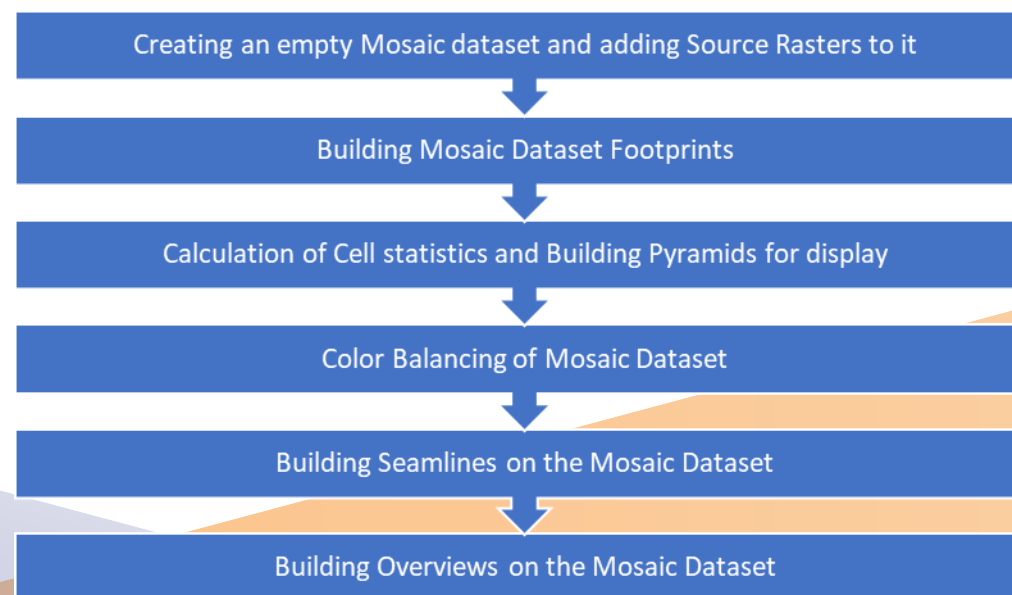
Rialtas na hÉireann  
Government of Ireland

The following was the system configuration on the two machines:

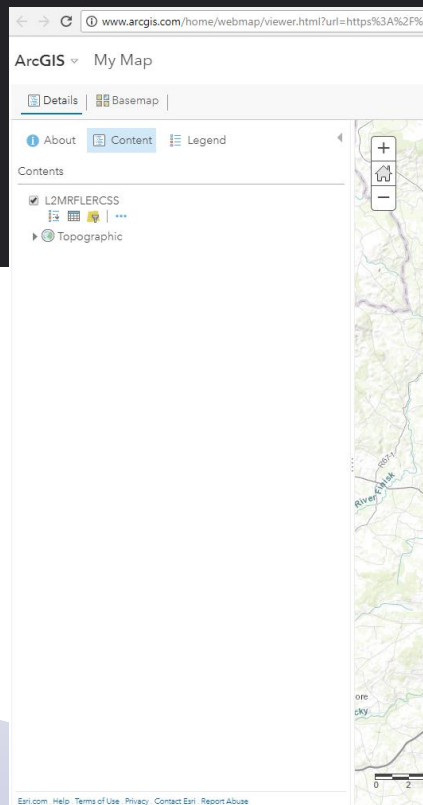
RAM	512 GB
Processor	Intel Xenon 2.3 GHz (36 cores)
Storage	2.91 TB SSD
Operating System	Windows Server 2012 R2

The following ESRI software was installed on the machines:

S.No	Software
1	ArcGIS Desktop 10.6
2	ArcGIS Pro 2.1.0
3	ArcGIS Server 10.6
4	Python v2.7.14 (pre-configured with ArcGIS installation)



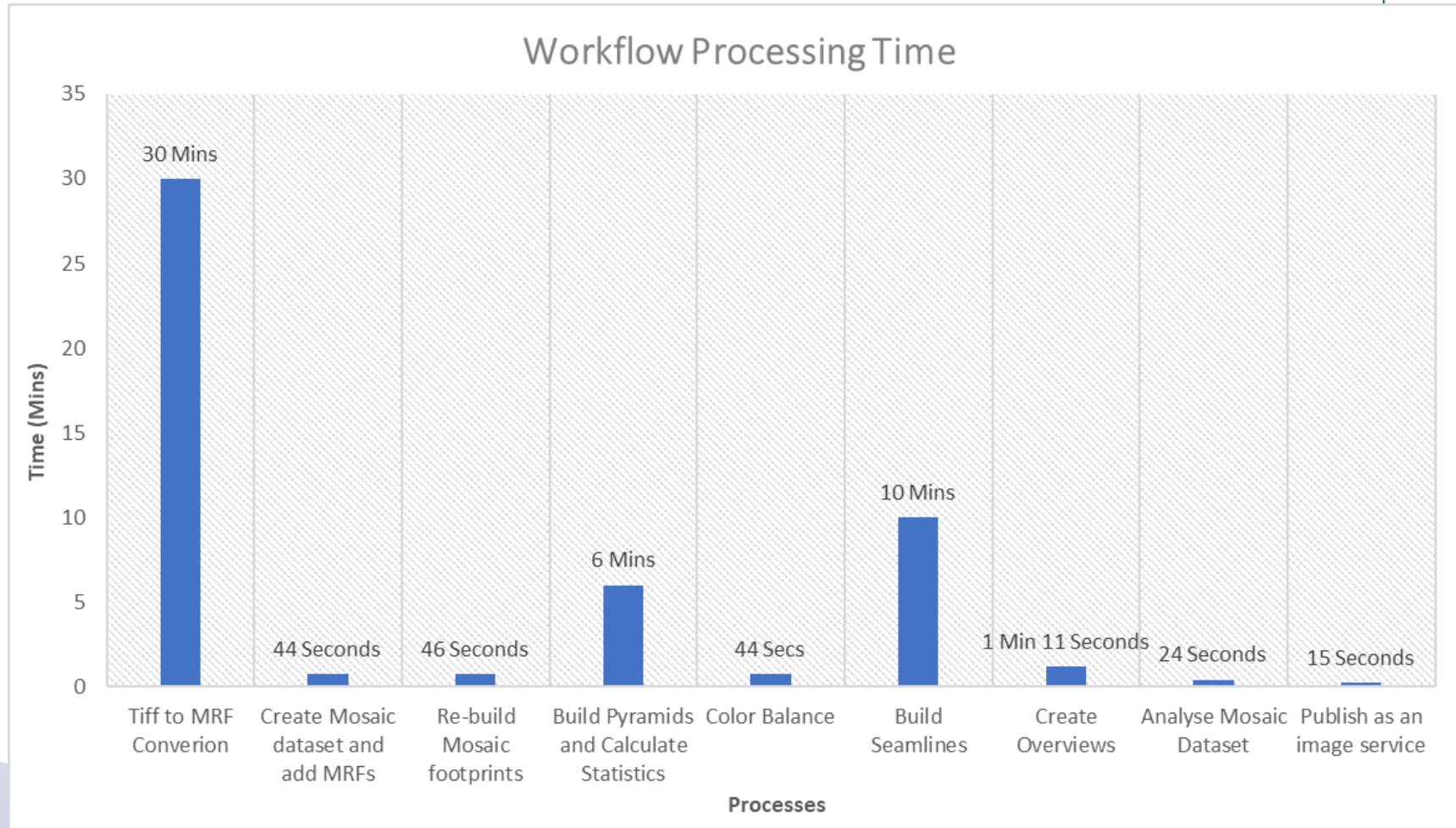




# Performance



Rialtas na hÉireann  
Government of Ireland





# Point Cloud Processing

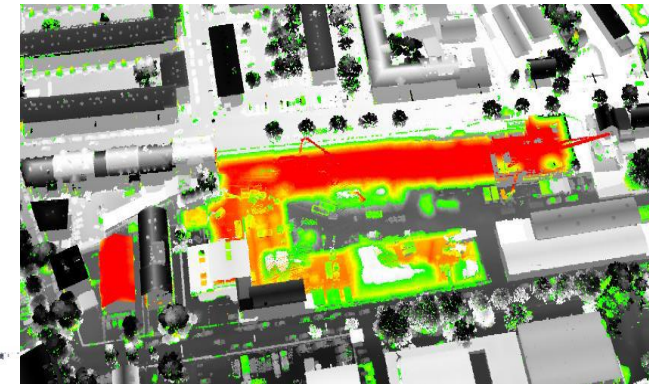


Rialtas na hÉireann  
Government of Ireland

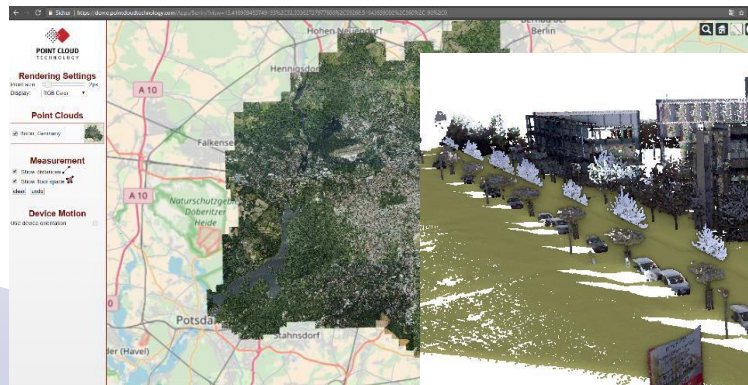
ORACLE®  
Cloud Infrastructure



Classification



Change Detection



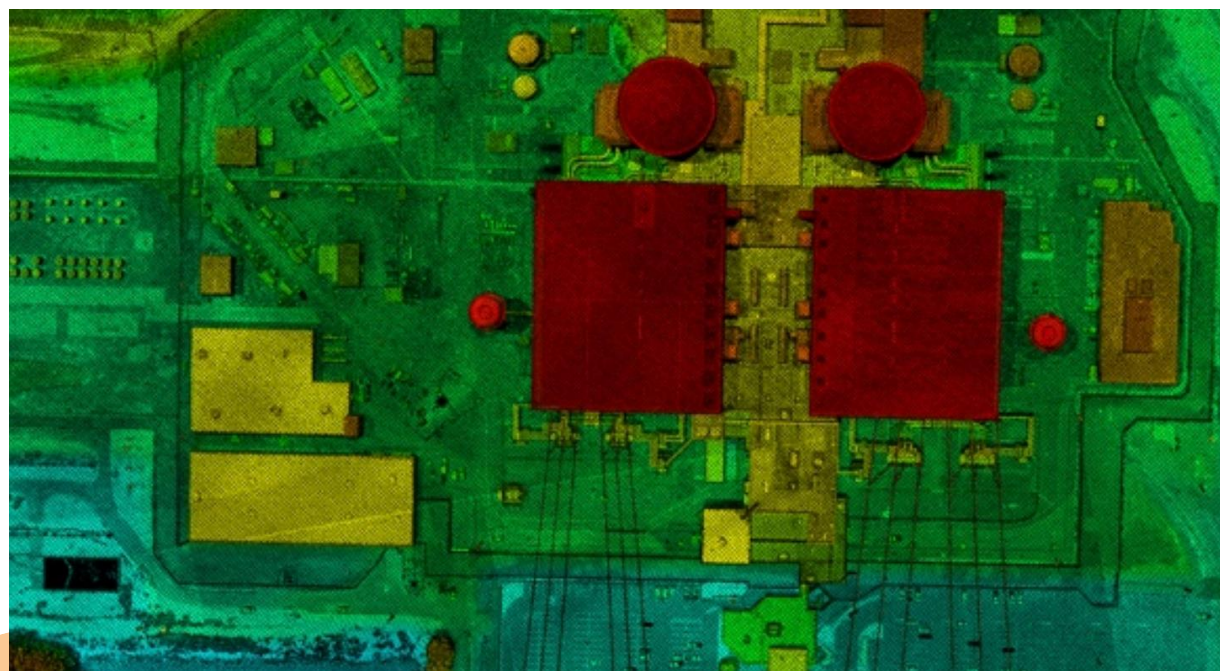
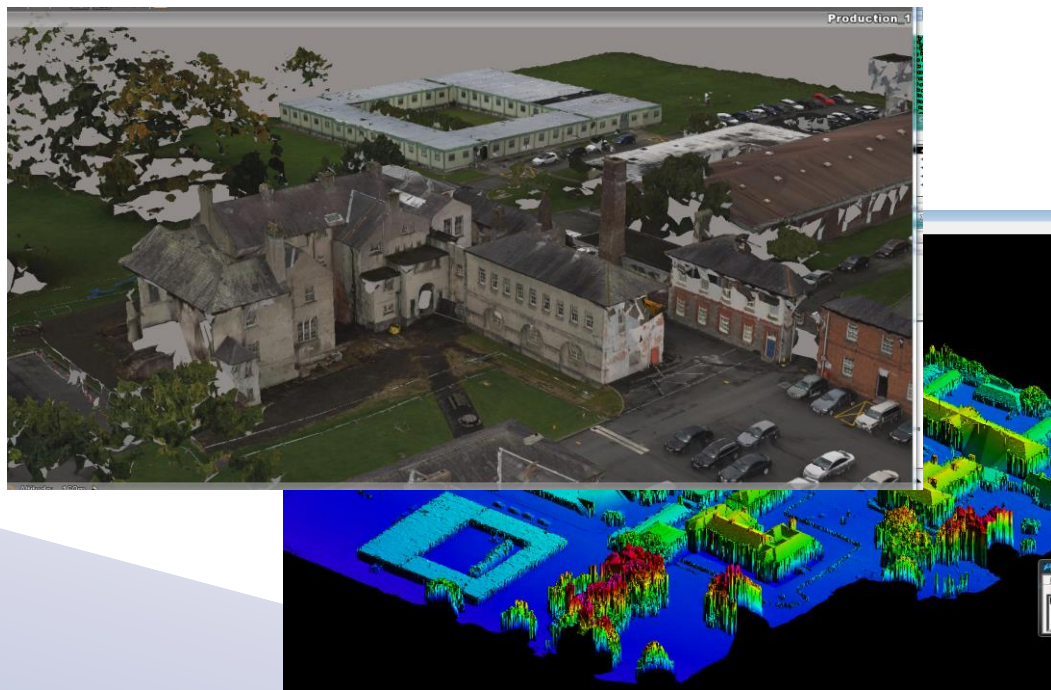
Visualization



# Point Cloud Generation



Rialtas na hÉireann  
Government of Ireland



# Hardware and Software Configuration



Rialtas na hÉireann  
Government of Ireland

## Oracle Server (BM.GPU 2.2):

2x NVIDIA Tesla P100  
192 GB RAM  
256 GB local HDD  
8TB block volume attached  
Windows Server 2012 R2

## Desktop:

1x NVIDIA GeForce GTX 1070  
32 GB RAM  
500 GB local SSD  
3 TB local HDD  
Windows 10 Pro



# Test Data



Rialtas na hÉireann  
Government of Ireland

Block\_9\_Louth\_Meath, combining two separate subsets:

Series 1, ADS 80

4 pts/m<sup>2</sup>

1.012 billion points

32.1 GB (las format)

Series 2, ADS 100

9 pts/m<sup>2</sup>

2.474 billion points

78.8 GB (las format)

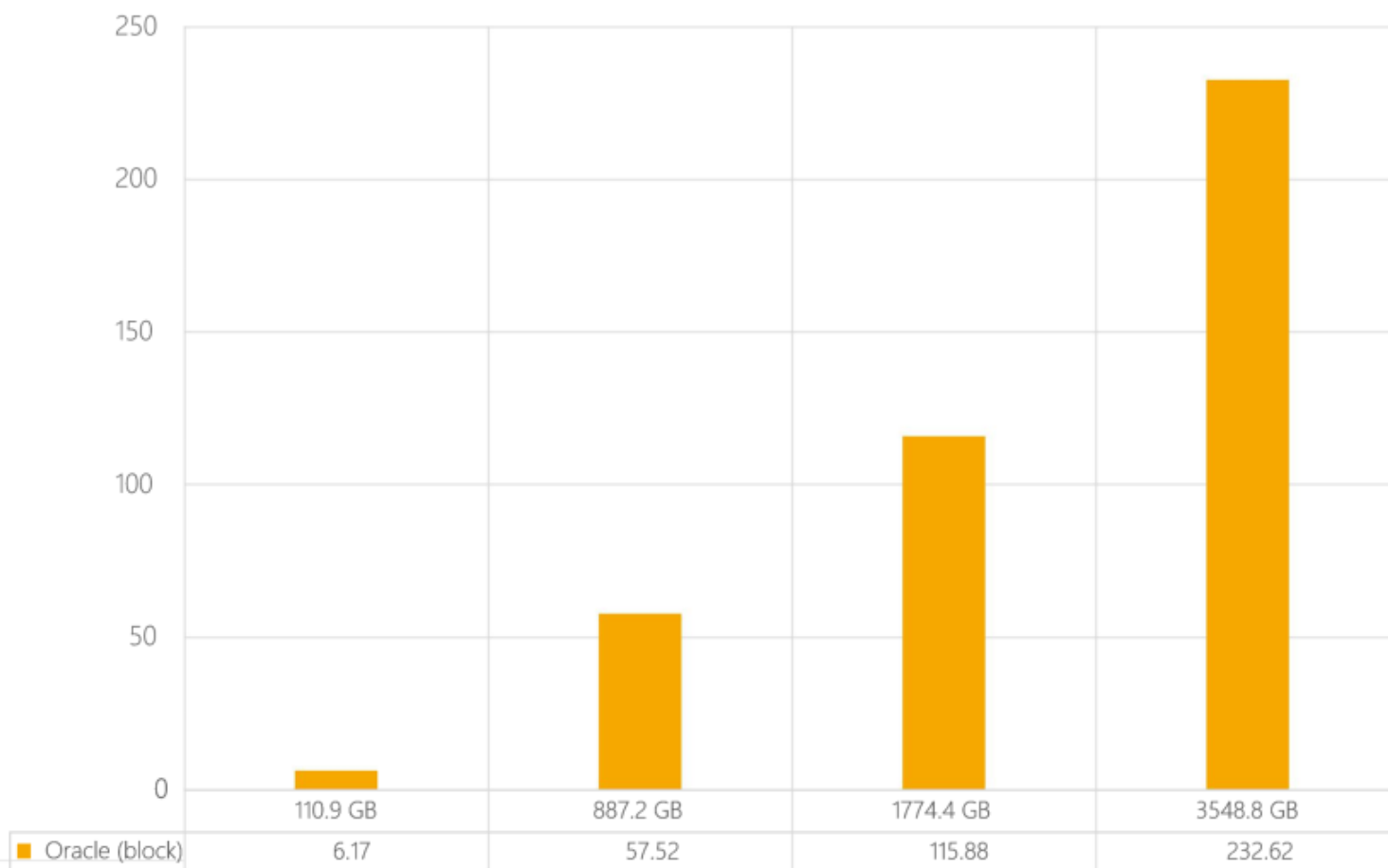






Rialtas na hÉireann  
Government of Ireland

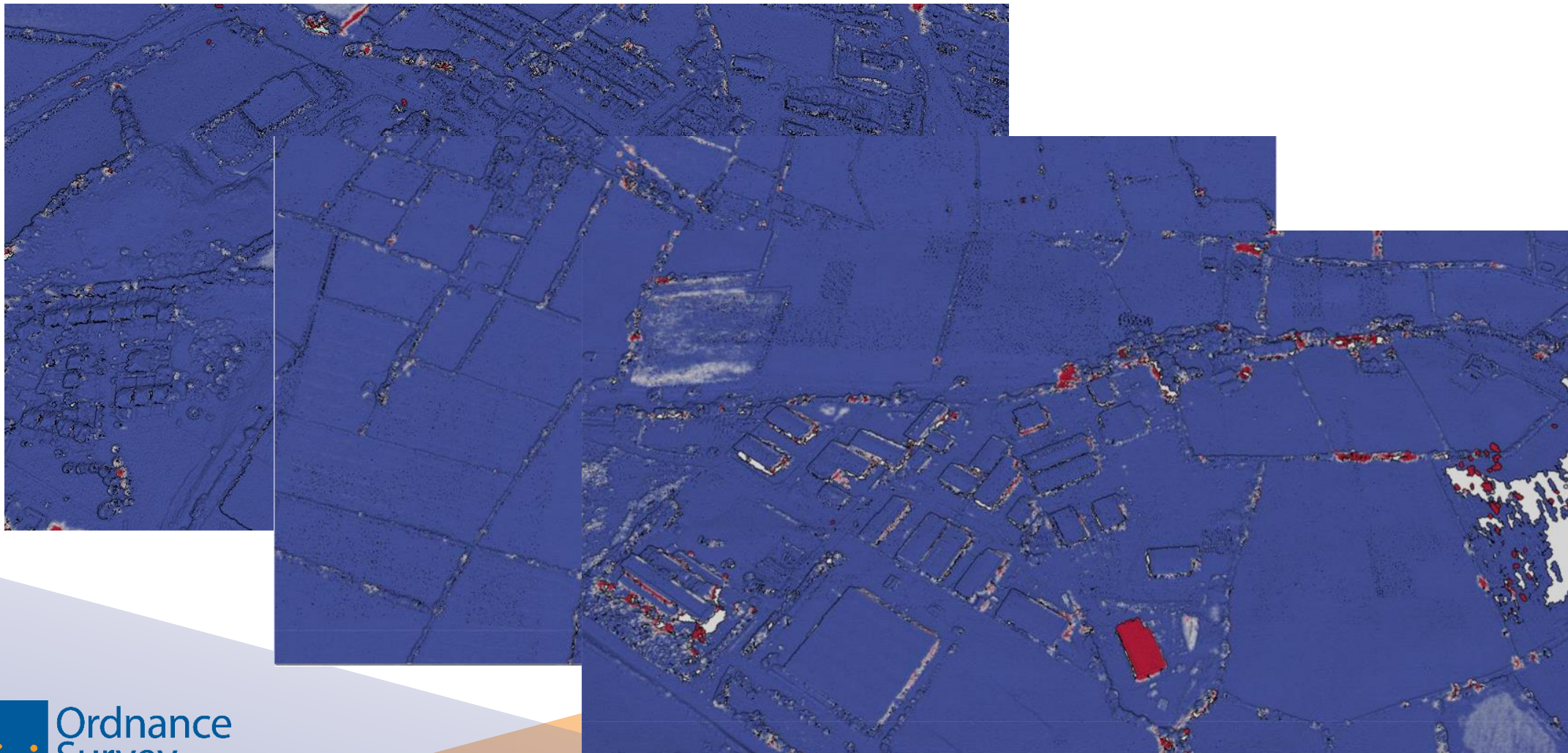
Computation time in minutes



# Change Detection



Rialtas na hÉireann  
Government of Ireland

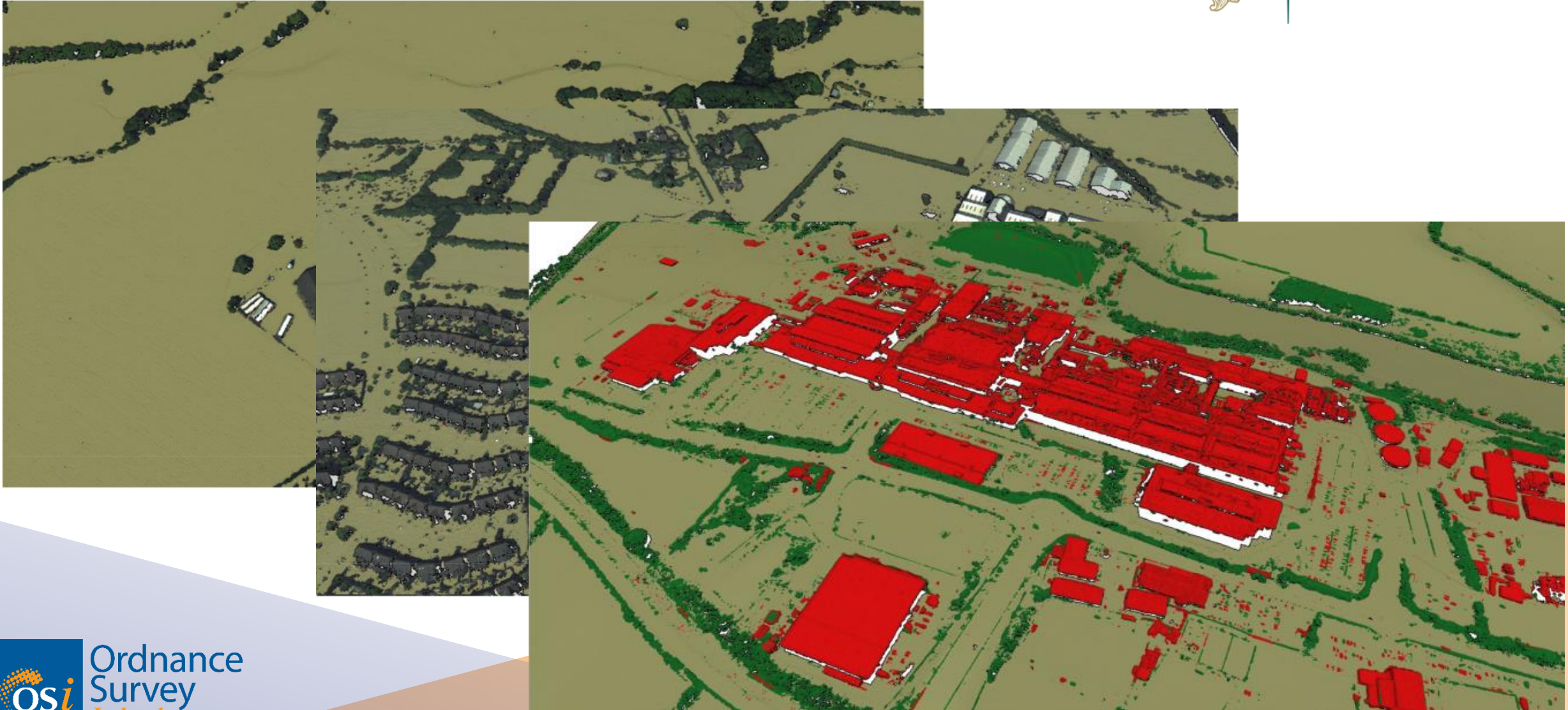




# Classification



Rialtas na hÉireann  
Government of Ireland





# Positional Accuracy Improvement

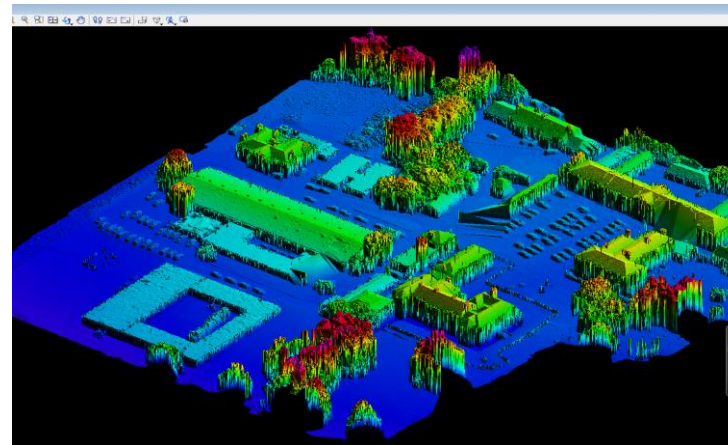
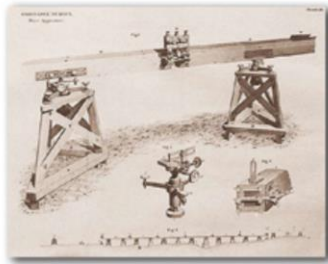


Rialtas na hÉireann  
Government of Ireland



MAJOR  
THOMAS  
COLBY

1784-1852

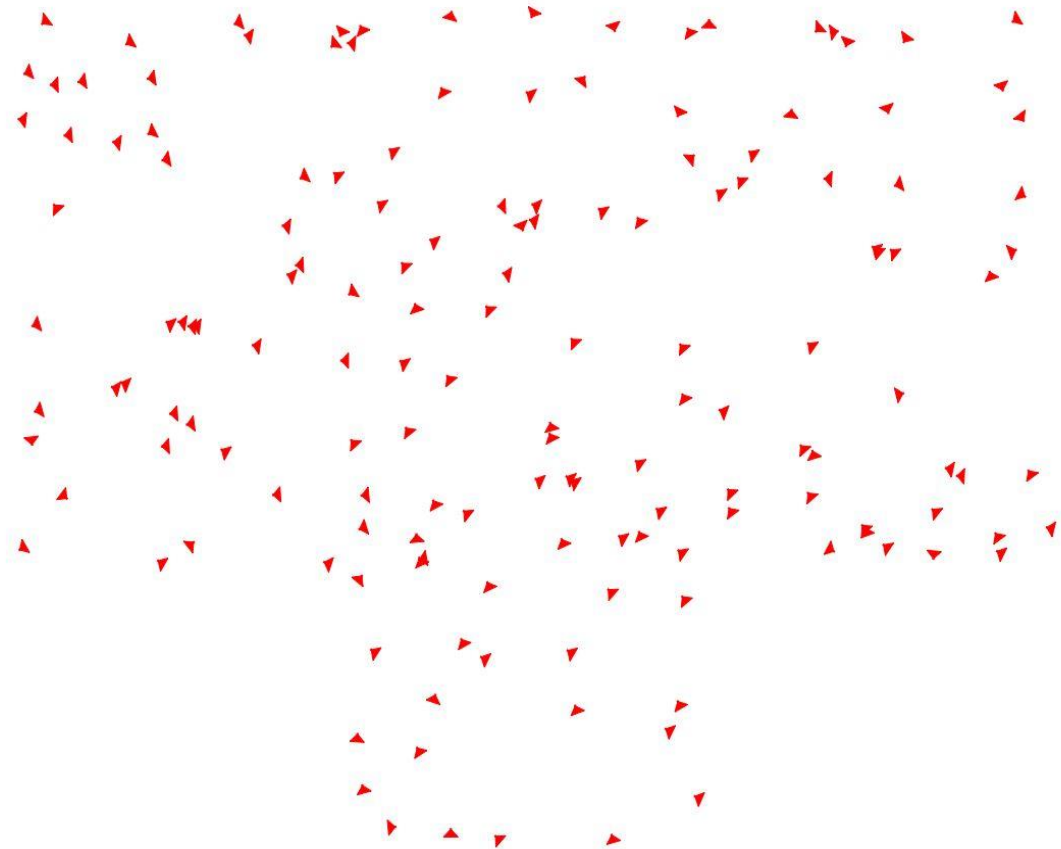


# Positional Accuracy Improvement



Rialtas na hÉireann  
Government of Ireland

- Shift Vectors
  - Should identify systematic errors only
  - Remove random survey errors
  - Remove real world changes

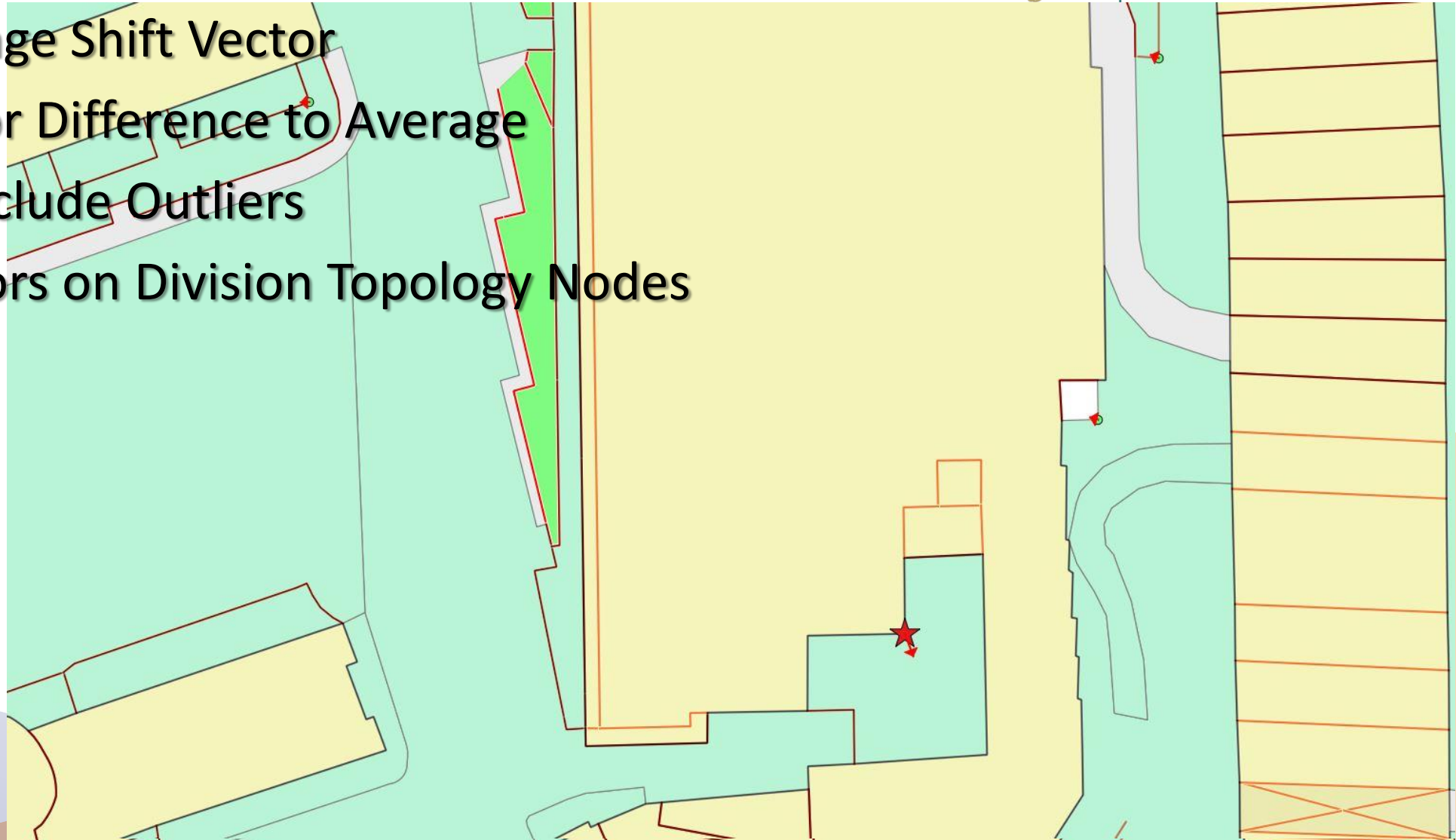


# Identify Outliers



Rialtas na hÉireann  
Government of Ireland

- Compute Average Shift Vector
- Compute Vector Difference to Average
- Identify and Exclude Outliers
- Best Shift Vectors on Division Topology Nodes

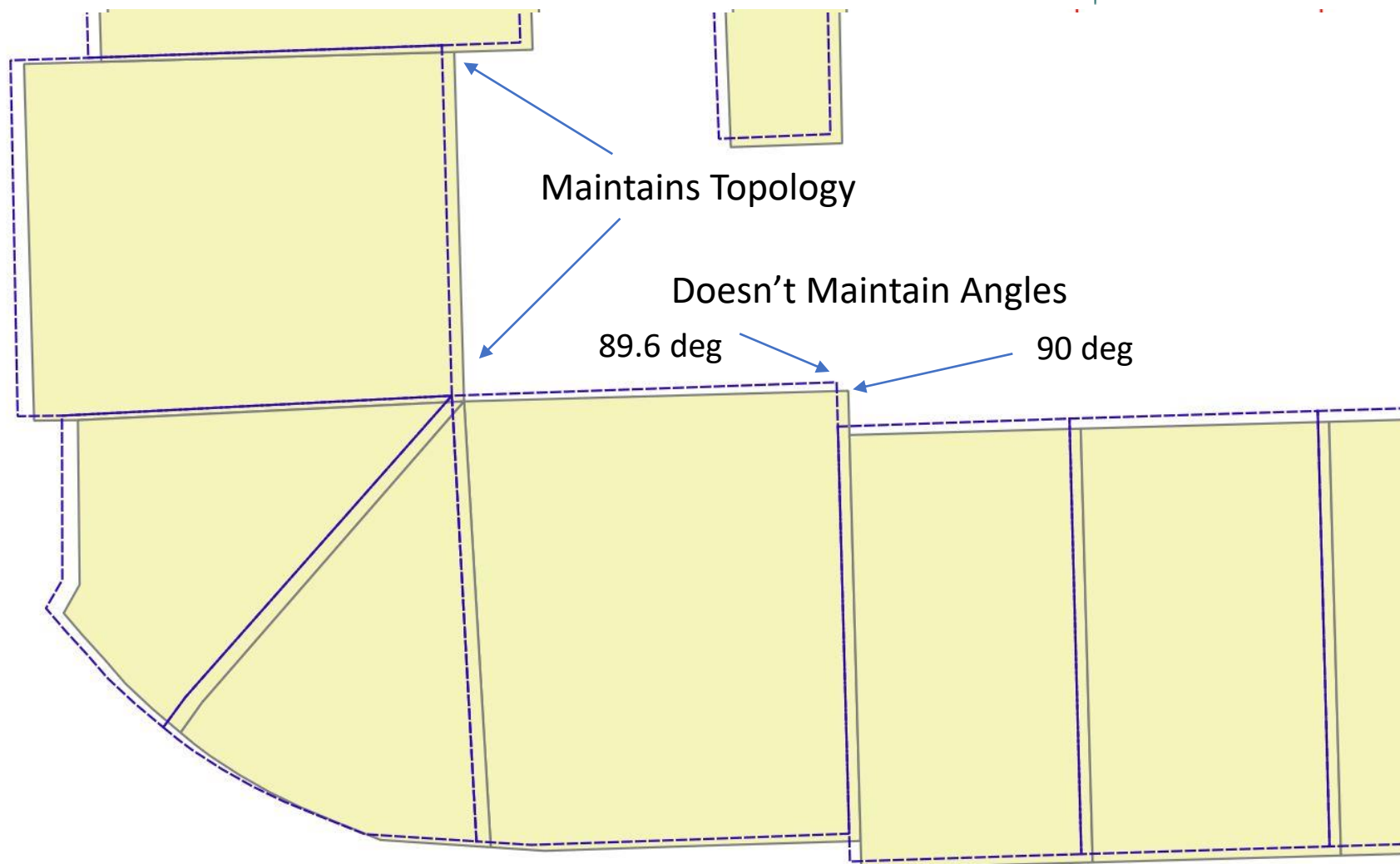




# Application of Shift Vectors



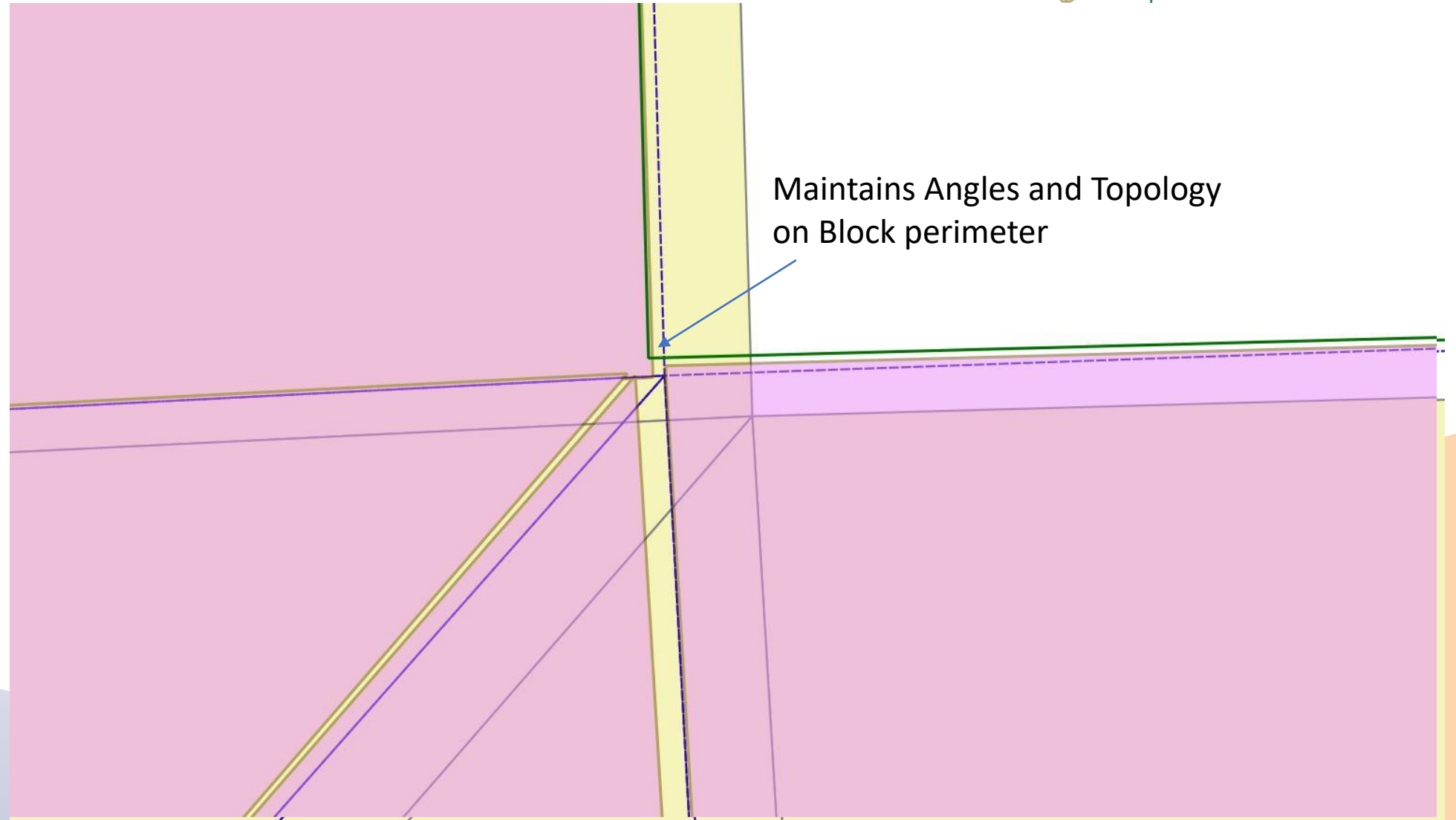
Rialtas na hÉireann  
Government of Ireland



# Connected Blocks of data



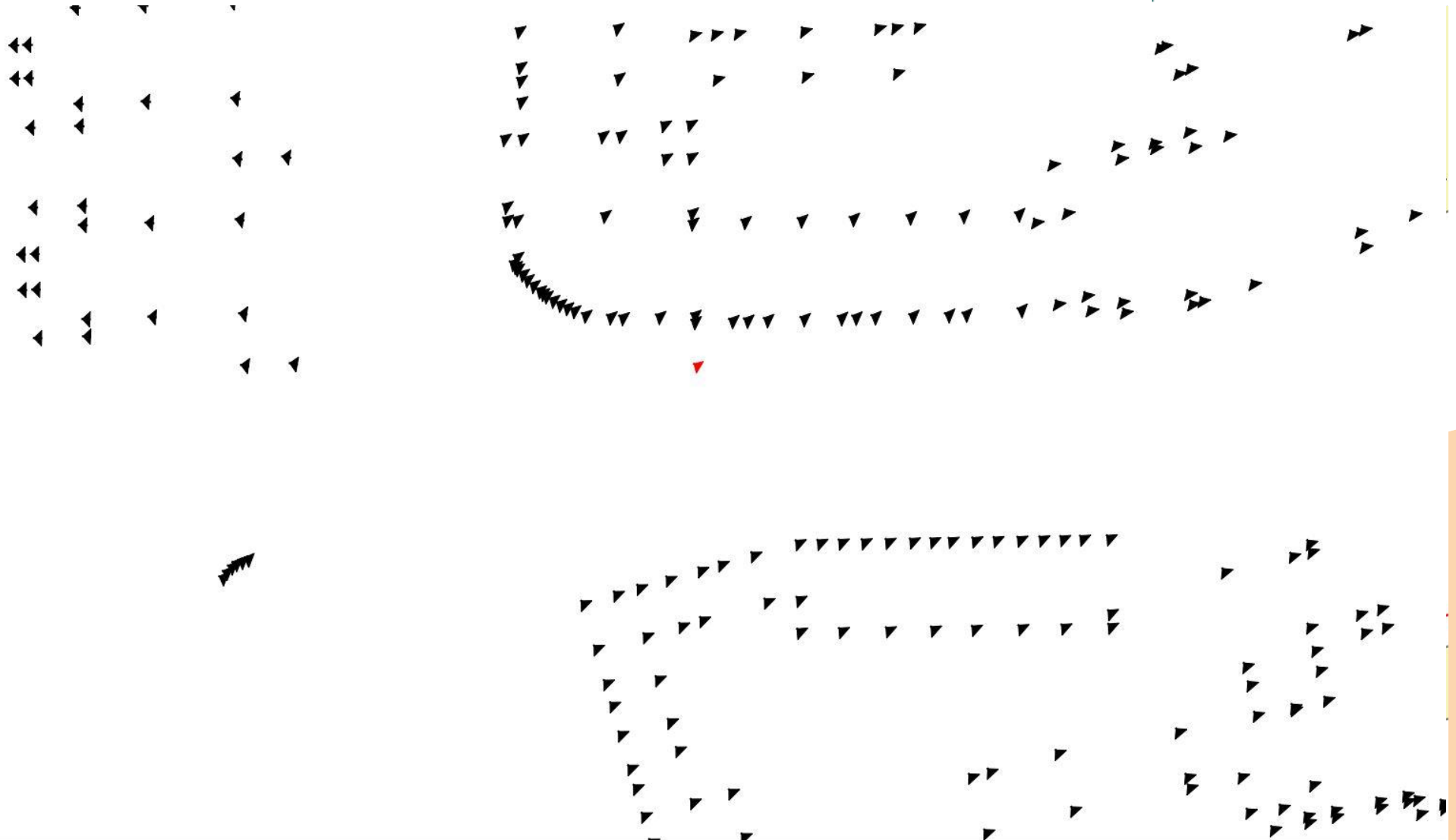
Rialtas na hÉireann  
Government of Ireland



# Full Shift Vector Dataset



Rialtas na hÉireann  
Government of Ireland





# Application of All Shift Vectors



Rialtas na hÉireann  
Government of Ireland

