

# Oracle E-Business Suite Enterprise Command Centers (ECC)

## V11 Quick Start Guide

Oracle is pleased to announce the availability of new and enhanced Enterprise Command Centers to help Oracle E-Business Suite users identify and act on priority transactions without custom operational reporting. The release includes 36 command centers comprising 150+ dashboards across Oracle E-Business Suite.

### V11 Announcement

Watch EBS leaders announcing ECC V11 and giving an overview of what's new in this release.

#### Cliff Godwin

Senior Vice President of Applications Development

Oracle E-Business Suite: [Innovations in 2023](#)

#### Muhannad Obeidat

Vice President of Software Development

Oracle E-Business Suite Enterprise Command Centers - [What's New in 12.2 V9](#) (V11 coming soon)

[Announcing Oracle E-Business Suite 12.2.13 and Enterprise Command Centers - November 2023 Update](#)

### Documentation

Full set of documentation needed in your ECC journey

Oracle E-Business Suite Releases 12.1 and 12.2 Release Content Documents Doc: [1302189.1](#)

Installing Oracle Enterprise Command Center Framework Doc: [2495053.1](#)

Oracle Enterprise Command Center Framework Globalization Guide Doc: [2947306.1](#)

Enabling TLS for Oracle Enterprise Command Center Framework Doc: [2496445.1](#)

Oracle Enterprise Command Center Framework High Availability Doc: [2745581.1](#)

[Oracle E-Business Suite: Extending Enterprise Command Centers](#)

[Oracle E-Business Suite User's Guide: Enterprise Command Centers](#)

[Oracle E-Business Suite: Administering Enterprise Command Centers](#)

Oracle Enterprise Command Center - RBAC Alternative Approach Doc: [2825838.1](#)

### Tutorial Videos

Direct from development and transfer of information sessions

[Enterprise Command Centers: Direct from Development videos](#)

[Enterprise Command Centers for E-Business Suite: Technical Details and Implementation](#)

[Implement and Use - Install ECC Online Training](#)

[Implement and Use - UI Components Online Training](#)

### Live Labs

Hands-On Labs covers the latest version of ECC

[From installation to Personalizations](#)

[From Personalization to Extensibility](#)

# Oracle E-Business Suite Enterprise Command Centers (ECC)

## V11 Quick Start Guide

**OCI** *ECC image in the OCI Marketplace*

[ECC V11 OCI Marketplace Image](#)

**ECC Analyzer** *Proactively identify missing patches, and more*

EBS Enterprise Command Center (ECC) Analyzer Doc: [2587090.1](#)

**ECC Community** *Provide access to experts that empower collaboration*

[Enterprise Command Center Framework Support Community - EBS \(MOSC\)](#)

**Installations** *All patches required for V11 release*

### Patches

Enterprise Command Center	<b>Prerequisites</b> <a href="#">R12.AD.C.Delta.15</a>   <a href="#">R12.TXK.C.Delta.15</a>			
	<b>ECC Framework</b> <a href="#">35307900</a>			
	<b>ECC Adapter</b> <a href="#">35302526</a>			
ATG	<b>12.2.4</b> <a href="#">35302405</a>	<b>12.2.5</b> <a href="#">35302413</a>	<b>12.2.6</b> <a href="#">35302450</a>	<b>12.2.7</b> <a href="#">35302461</a>
	<b>12.2.8</b> <a href="#">35302478</a>	<b>12.2.9</b> <a href="#">35302481</a>	<b>12.2.10</b> <a href="#">35302485</a>	<b>12.2.11</b> <a href="#">35302496</a>
	<b>12.2.12</b> <a href="#">35302505</a>	<b>12.2.13</b> <a href="#">35302518</a>		

### Product Family Consolidated Patches

Financials	General Ledger, Receivables, iReceivables, Assets, Payables, Cash Management, iExpenses, Lease, and Finance Management <b><a href="#">35302562</a></b>		
Supply Chain Management	Order Management, Inventory Management, Enterprise Asset Management, Channel Revenue Management, Discrete Manufacturing, Process Manufacturing, Outsourced Manufacturing, Cost Management, Depot Repair, Advanced Pricing, Project Manufacturing <b><a href="#">35302548</a></b>		
Procurement	iProcurement, Contract Lifecycle Management, Procurement, iStore <b><a href="#">35302576</a></b>		
Projects	Projects <b><a href="#">35302558</a></b>	Human Resource Management	Human Resources, Payroll <b><a href="#">35302552</a></b>
Customer Relationship Management	Service Contracts, Service, Incentive Compensation <b><a href="#">35302560</a></b>		

# Oracle E-Business Suite Enterprise Command Centers (ECC)

## V11 Quick Start Guide

### Documentation

All product documentation and transfer of information (TOI) sessions for V11



Implement and use online training sessions cover the new and enhanced features in this release. To check the previous release sessions, visit <https://learning.oracle.com> and search by command center name.



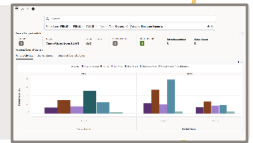
### Oracle Employee Expenses Command Center

[Implement and Use Online Training](#) | [Implementation Guide](#) | [User Guide](#)



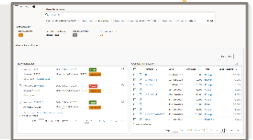
### Oracle General Ledger Command Center

[Implement and Use Online Training](#) | [Implementation Guide](#) | [User Guide](#)



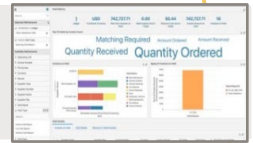
### Oracle Cash Management Command Center

[Implement and Use Online Training](#) | [Implementation Guide](#) | [User Guide](#)



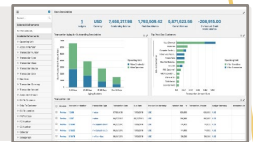
### Oracle Payables Command Center

[Implement and Use Online Training](#) | [Implementation Guide](#) | [User Guide](#)



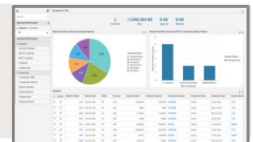
### Oracle Receivables Command Center

[Implement and Use Online Training](#) | [Implementation Guide](#) | [User Guide](#)



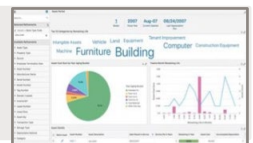
### Oracle iReceivables Command Center

[Implement and Use Online Training](#) | [Implementation Guide](#) | [User Guide](#)



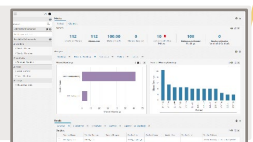
### Oracle Assets Command Center

[Implement and Use Online Training](#) | [Implementation Guide](#) | [User Guide](#)



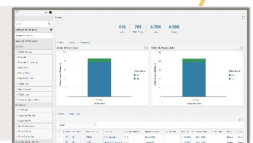
### Oracle Lease and Finance Management Command Center

[Implement and Use Online Training](#) | [Implementation Guide](#) | [User Guide](#)



### Oracle Order Management Command Center

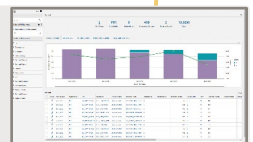
[Implement and Use Online Training](#) | [Implementation Guide](#) | [User Guide](#)



### Oracle Inventory Management Command Center

[Implement and Use Online Training – Move order](#) | [Supply / Demand](#) | [Electronic Kanban](#) | [Transaction Management](#)

[Implementation Guide](#) | [User Guide](#)



# Oracle E-Business Suite Enterprise Command Centers (ECC)

## V11 Quick Start Guide

### Oracle Enterprise Asset Management Command Center

[Implement and Use Online Training](#) | [Implementation Guide](#) | [User Guide](#)



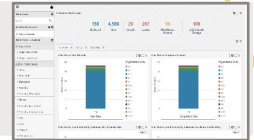
### Oracle Channel Revenue Management Command Center

[Implement and Use Online Training](#) | [Implementation Guide](#) | [User Guide](#)



### Oracle Discrete Manufacturing Command Center

[Implement and Use Online Training](#) | [Implementation Guide](#) | [User Guide](#)



### Oracle Process Manufacturing Command Center

[Implement and Use Online Training](#) | [Implementation Guide](#) | [User Guide](#)



### Oracle Bills of Materials Command Center

[Implement and Use Online Training](#) | [Implementation Guide](#) | [User Guide](#)



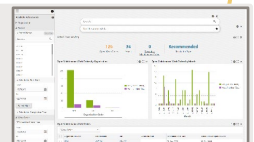
### Oracle Outsourced Manufacturing Command Center

[Implement and Use Online Training](#) | [Implementation Guide](#) | [User Guide](#)



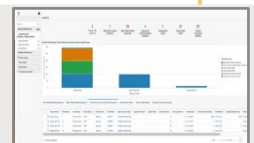
### Oracle Cost Management Command Center

[Implement and Use Online Training](#) | [Implementation Guide](#) | [User Guide](#) | [Process Manufacturing User Guide](#)



### Oracle Project Manufacturing Command Center

[Implement and Use Online Training](#) | [Implementation Guide](#) | [User Guide](#)



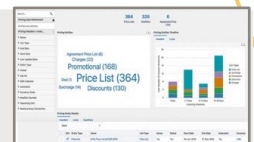
### Oracle Quality Command Center

[Implement and Use Online Training](#) | [Implementation Guide](#) | [User Guide](#)



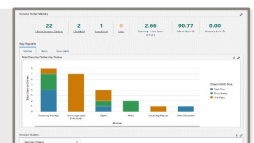
### Oracle Advanced Pricing Command Center

[Implement and Use Online Training](#) | [Implementation Guide](#) | [User Guide](#)



### Oracle Depot Repair Command Center

[Implement and Use Online Training](#) | [Implementation Guide](#) | [User Guide](#)



### Oracle Asset Tracking Command Center

[Implement and Use Online Training](#) | [Implementation Guide](#) | [User Guide](#)





# Oracle E-Business Suite Enterprise Command Centers (ECC)

## V11 Quick Start Guide

### Oracle Landed Cost Management Command Center

[Implement and Use Online Training](#) | [Implementation Guide](#) | [User Guide](#)



### Oracle iProcurement: Consumer-Like Shopping

[Implement and Use Online Training](#) | [Implementation Guide](#) | [User Guide](#)



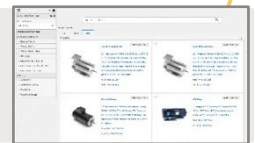
### Oracle Procurement Command Center

[Implement and Use Online Training](#) | [Implementation Guide](#) | [User Guide](#)



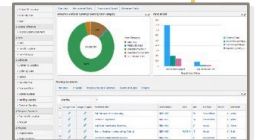
### Oracle iStore: Enhanced Product Search

[Implement and Use Online Training](#) | [Implementation Guide](#) | [User Guide](#)



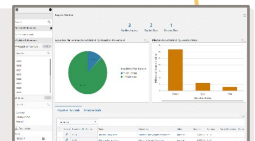
### Oracle Project Procurement Command Center

[Implement and Use Online Training](#) | [Implementation Guide](#) | [User Guide](#)



### Oracle Contract Lifecycle Management for Public Sector

[Implement and Use Online Training](#) | [Implementation Guide](#) | [iProcurement User Guide](#) | [Purchasing User Guide](#)



### Oracle Projects Command Center

NEW UPDATE

[Implement and Use Online Training – Investment Turn Dashboard](#) |

[Implement and Use Online Training – G Invoicing \(Federal\)](#) |

[Implement and Use Online Training – Billing Dashboard](#) |

[Implement and Use Online Training – Transfer Budgets and Year-End Budget](#) |

[Implement and Use Online Training – Project Costing](#) |

[Implementation Guide](#) | [User Guide](#)



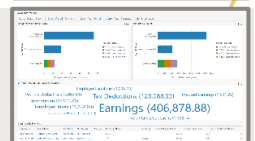
### Oracle Human Resources Command Center

[Implement and Use Online Training](#) | [Implementation Guide](#) | [User Guide](#)



### Oracle Payroll Command Center

[Implement and Use Online Training](#) | [Implementation Guide](#) | [User Guide](#)



### Oracle Incentive Compensation Command Center

[Implement and Use Online Training](#) | [Implementation Guide](#) | [User Guide](#)



# Oracle E-Business Suite Enterprise Command Centers (ECC)

## V11 Quick Start Guide

### Oracle Lease Contracts Command Center

[Implement and Use Online Training](#) | [Implementation Guide](#) | [User Guide](#)



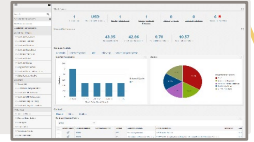
### Oracle Service Command Center

[Implement and Use Online Training](#) | [Implementation Guide](#) | [User Guide](#)



### Oracle Service Contracts Command Center

[Implement and Use Online Training](#) | [Implementation Guide](#) | [User Guide](#)



### Oracle Field Service Command Center

[Implement and Use Online Training](#) | [Implementation Guide](#) | [User Guide](#)

