

# Transform Your Business with Complete Intelligence

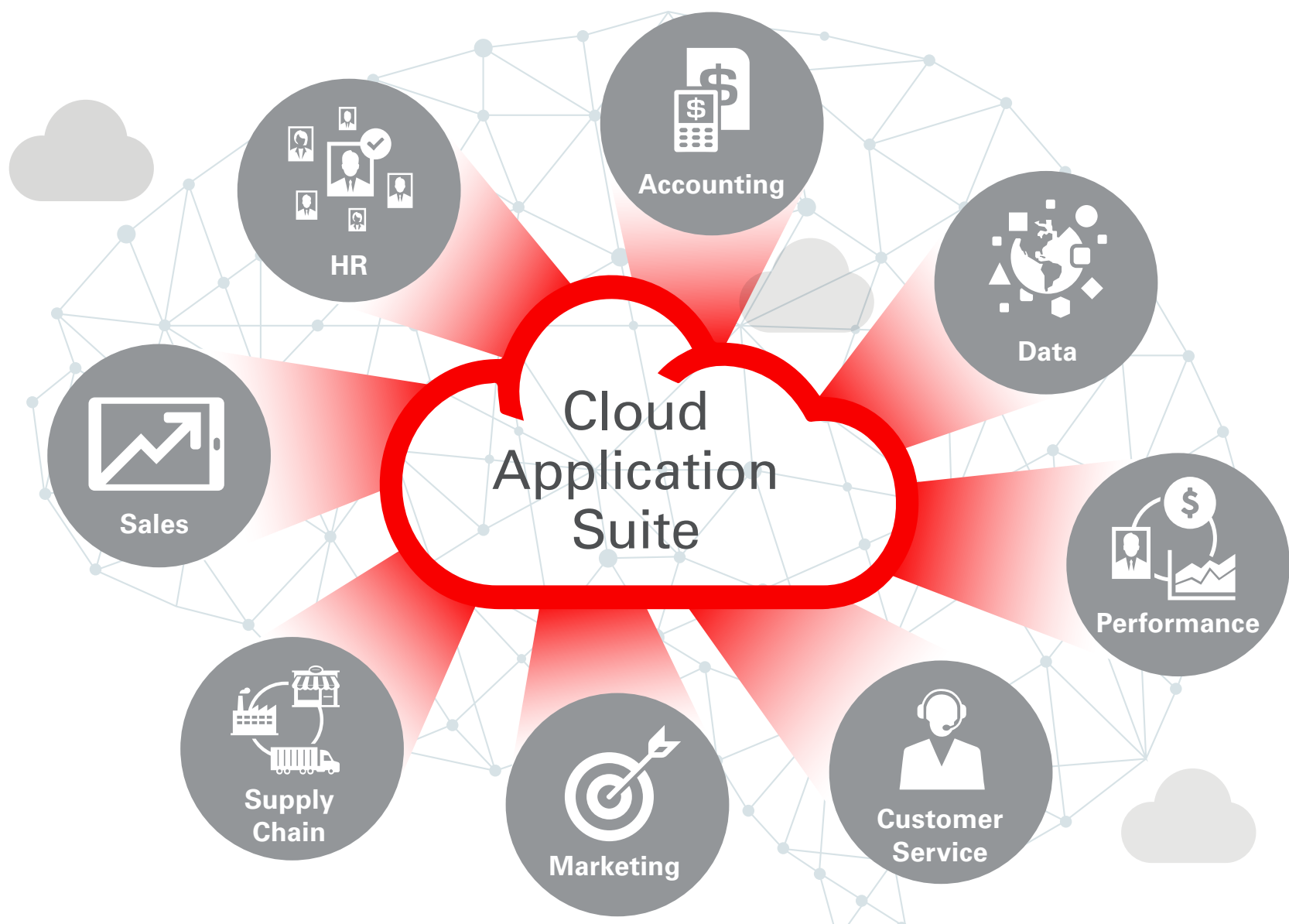


“It is hard to make intelligent decisions when you have only partial facts”

Sherlock Holmes

## WHAT IS A COMPLETE CLOUD APPLICATIONS SUITE?

A complete cloud applications suite is comprised of a set of software-as-a-services, that connects your data with end-to-end business processes in:



Improve business IQ using data from across the **WHOLE** business, not just a piece of it. A complete cloud applications suite is modular, yet connected, eliminates data silos, and easily enables a connected intelligent business.

## WHY DO YOU WANT A CONNECTED INTELLIGENT BUSINESS?

Your business's IQ is based upon its **ability to see and act beyond** historical reporting.

### TRANSFORM BUSINESS IQ WITH:

- The power of data from across your entire business
- Real-time external data:
  - behavioral,
  - locational (GPS),
  - weather,
  - click stream, and etc.
- Better, faster intelligent business outcomes



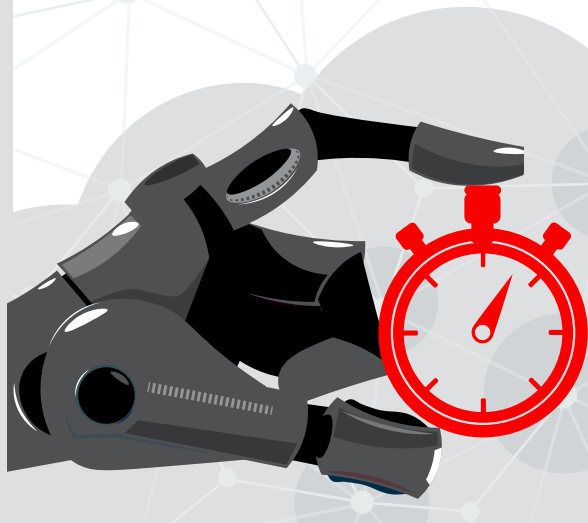
### RESPONSE TIME NEEDED: Milliseconds versus Minutes or Hours or Days

#### Business problem:

Cannot meet customer demands in today's real-time response environment.

#### Solution:

- Have your business data all in one place in the cloud
- Have external data sources near apps to reduce latency
- Feed data to adaptive intelligent apps for faster response time



Complete Intelligence

=

The power of your internal data

+

The power of real-time external data

**Example:** Determine the ideal time to present the best e-commerce offer to sell a truck to a customer.

### INTERNAL DATA

- Customer last purchase
- Customer payment history & credit
- Customer loyalty & frequency of purchase
- Customer service records

### EXTERNAL DATA

- Customer current geo-location relative to a truck dealer
- Weather information-current and predicted-next few months
- Customer's life events
- Employment history
- Entertainment preferences



### It Just Makes Sense

It's time to transform your business and provide the next level of experiences for your customers.



For more information please visit [oracle.com/applications](http://oracle.com/applications)