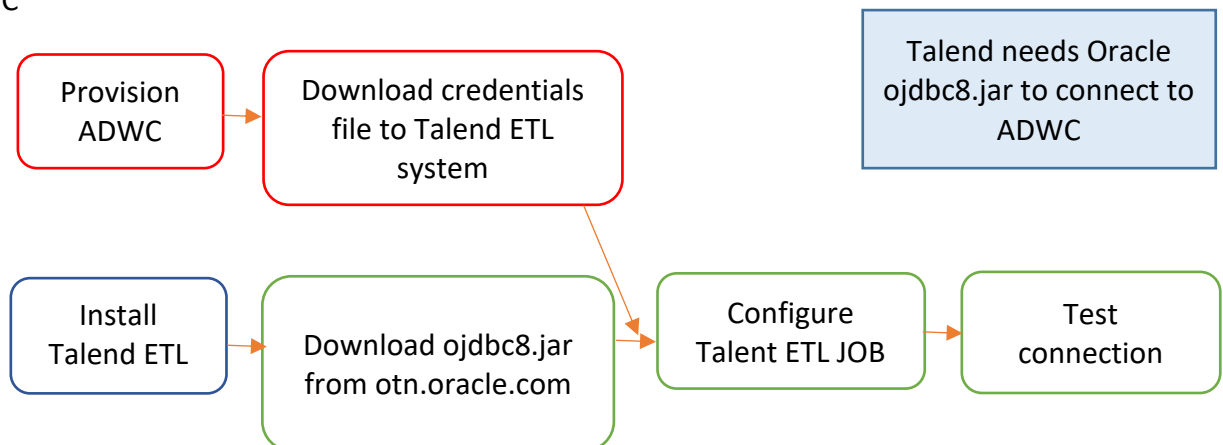


Vijay Balebail, Aalok Muley

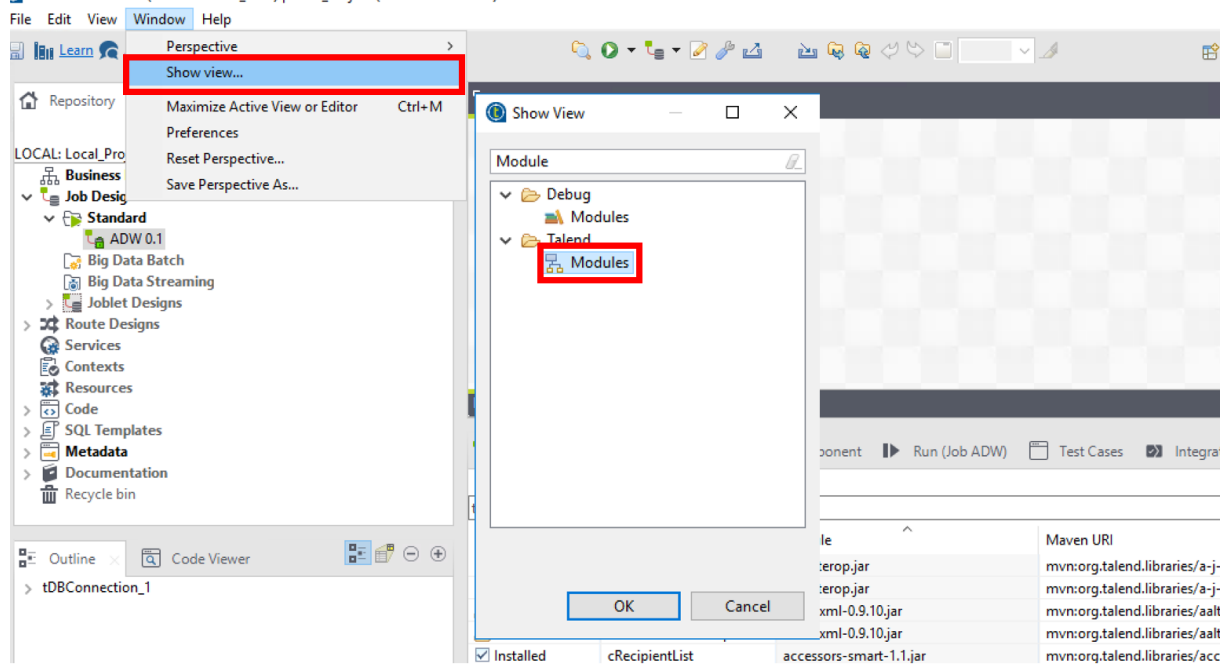
Certification Matrix	Version
Talend ETL Tool	7.x or higher
Oracle JDBC	ojdbc8.jar or higher


Here is the overview of the install and configuration process to get Talend connected to ADWC

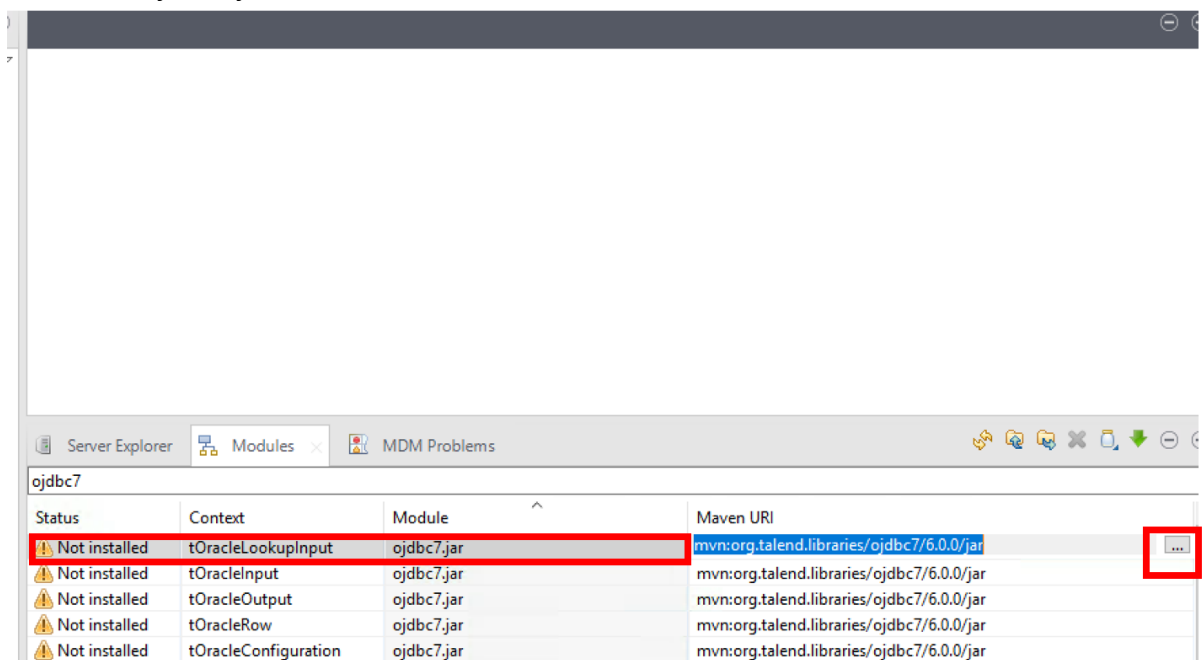


1. This document assumes that the Autonomous Data Warehouse has been provisioned and the corresponding credentials.zip file has been downloaded to the system that has the Talend Interface to Oracle installed. For the Oracle documentation to provision ADWC please check [here](#). Also check [Downloading Client Credentials \(Wallets\)](#).
2. Follow the instructions from the Talend documentation to install the software on the desktop. As a prerequisite make sure that you have installed the Oracle JDK and configured for [JDBC prerequisites](#).
3. All connections to Autonomous Data Warehouse use certificate-based authentication and Secure Sockets Layer (SSL). Copy the client credentials file that you downloaded in step 1 to the system running the Talend ETL and uncompress it into a secure folder.
4. Download ojdbc8.jar from the Oracle website. You need it to connect Talend 7.x to ADWC. If you currently have Talend 7.x installed check to see if ojdbc7.jar has been configured. You could still create an ETL job to load ojdbc8.jar (TLibraryLoad) in your Job Design Canvas, and override the existing ojdbc7.jar configuration.
5. The simpler solution is to go through a fresh install of Talend 7.x and configure ojdbc8.jar.

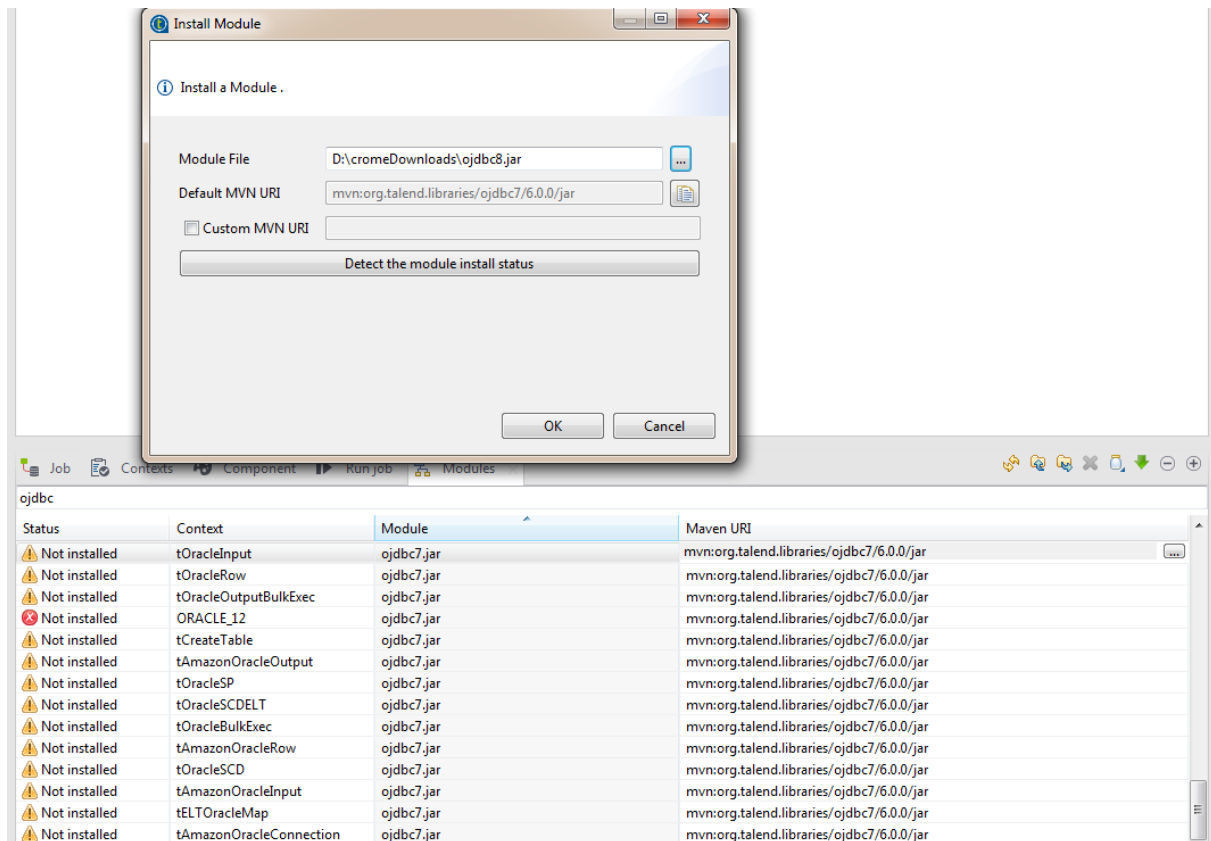
- In the Talend studio, display the Module View navigate to Window → Show view... → search for “Module” → click Module.



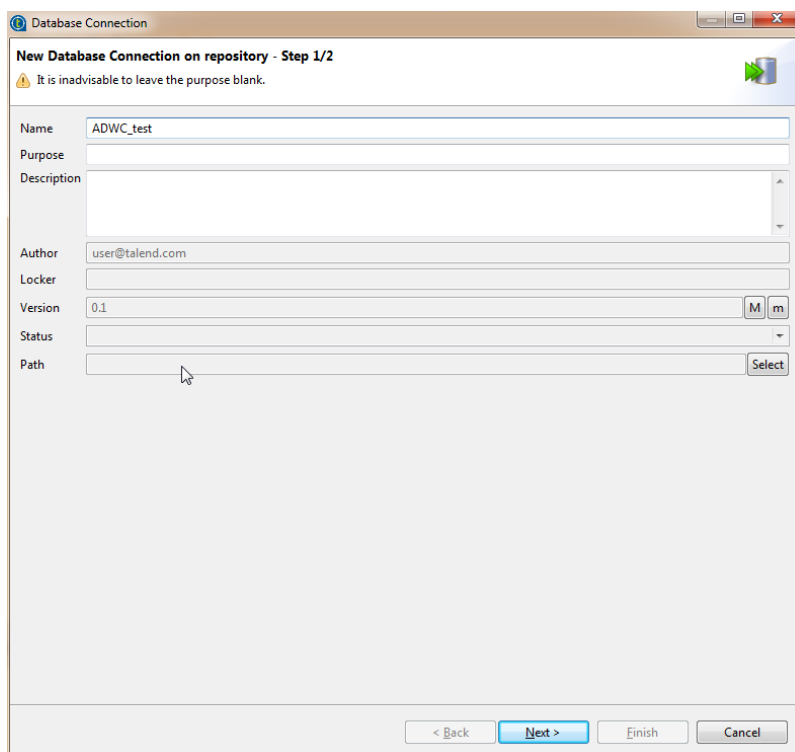
- Search for ojdbc7.jar and click on 



- Browse to the directory where you downloaded ojdbc8.jar in step 4. If ojdbc7.jar is already installed, you will see error that the module is already installed.



- Once the JDBC driver is loaded, you can now create a Metadata DB connection. Click Metadata → Database Connection → Create Connection.



Enter connection name and click next.

10. Choose Oracle Custom driver, enter the login username and password. And enter the jdbc url. Here is a sample syntax:

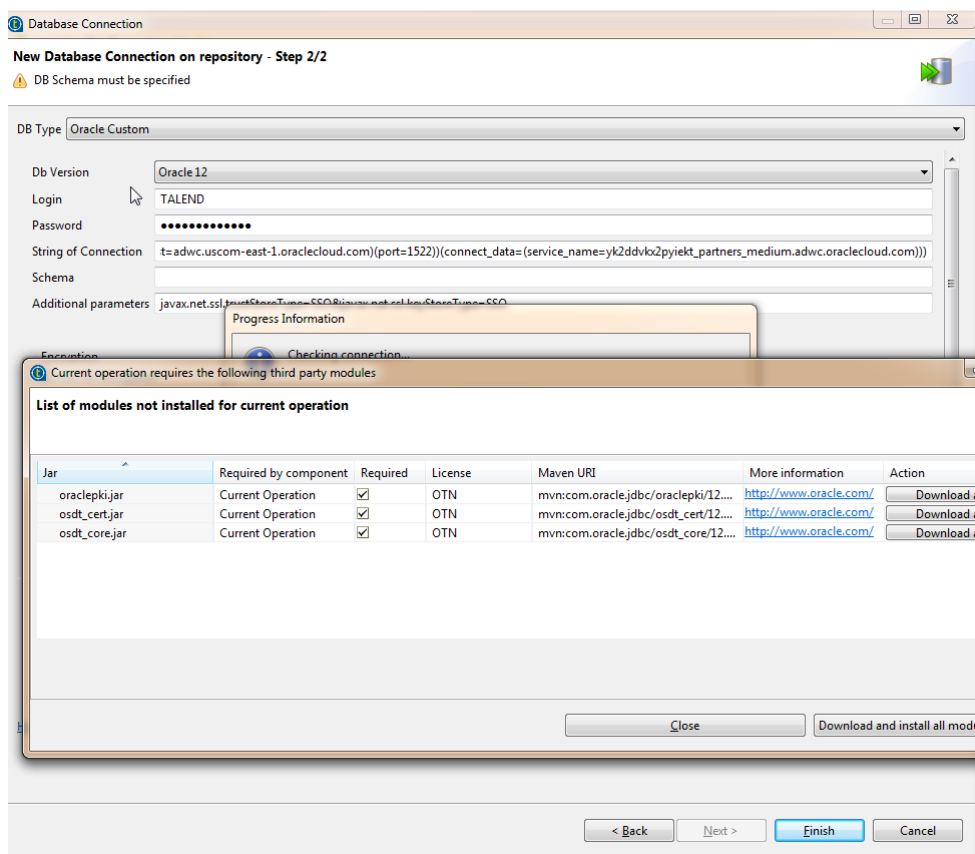
```
jdbc:oracle:thin:@(description=(address=(protocol=tcps)(port=1522)
)(host=adwcHostName))(connect_data=(service_name=serviceName))
```

Add the following in “Additional Parameters”

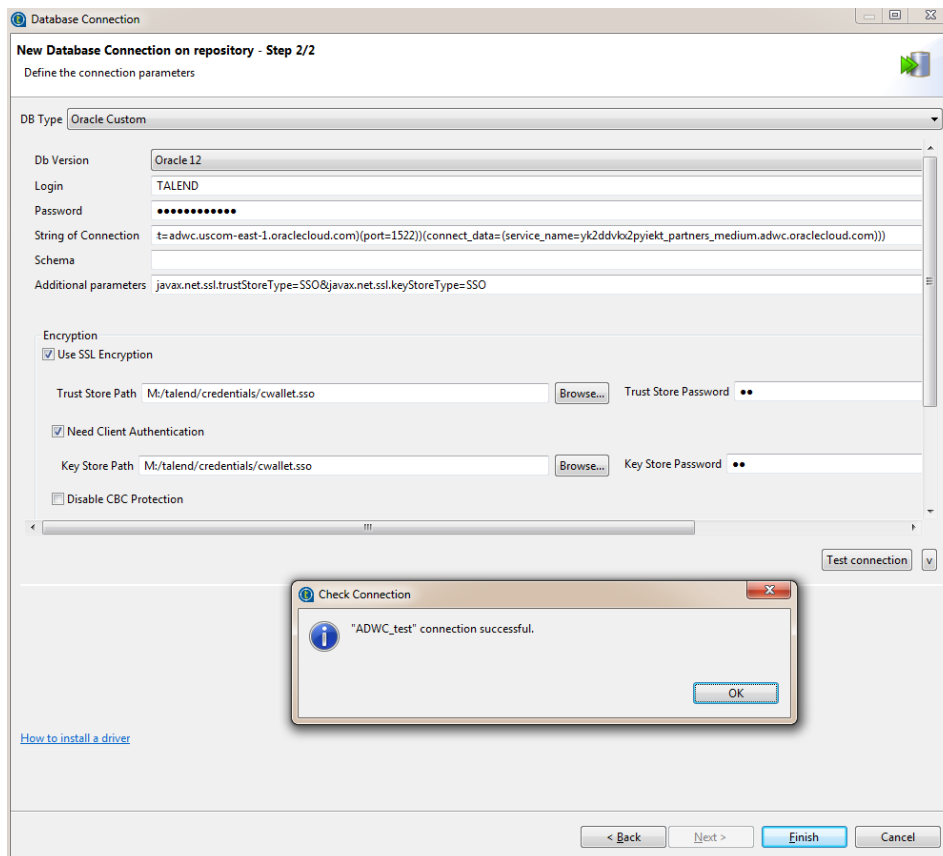
```
javax.net.ssl.trustStoreType=SSO & javax.net.ssl.keyStoreType=SSO
```

Enable check box for “Use Encryption” and “Need Client Authentication”. Enter the full path for the cwallet.sso file extracted from the credentials.zip in step 1 and add it to the TrustStore and KeyStore parameters. Password is not required for the cwallet.sso file. Click “Test Connection”.

For the first time you “Test Connection” a pop-up window will appear that will ask for more jar files to be installed. Click “Download and Install All Modules Available”.



11. Click “Test Connection” again.



A message box will appear indicating that the connection was successful. You have now successfully validated a connection from Talend 7.x to ADWC. You could use this DbConnection object in your job design canvas to connect to ADWC.