

A photograph of three people, two men and one woman, looking at a laptop screen. The man on the left is pointing at the screen. The woman in the middle is smiling. The man on the right is looking intently at the screen. The background is a bright, out-of-focus office setting.

ORACLE®

INTERNET OF THINGS—
FLEET MONITORING
CLOUD SERVICE

Monitor Fleet Activity in the Supply Chain

ORACLE®

Improved Logistic Services

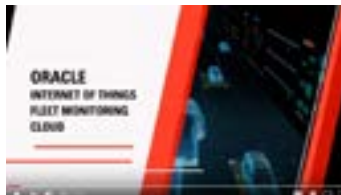
Put data to work.

In a traditional supply chain, the transfer of supplies and finished goods represents an area of significant inefficiency and loss.

Fleet managers need to know the location of their vehicles, manage their fuel spend, ensure driver safety compliance, and use the data to provide better information to their customers.

Shippers need to know when their goods will arrive and the environmental conditions inside the vehicle. Delays in delivery can significantly affect their supply chain.

Think what you could do if you took the data that you're collecting from your fleet vehicles and put it to work for you.



WATCH

Put data to work with Oracle Internet of Things Fleet Monitoring Service



Improved
Logistic
Services

Real-Time
Visibility and
Insights

Operational
Efficiency

Real-Time
Incident
Management

Custom Event
Rules

Improved
Logistic
Services

Geographic
Areas

Supply Chain
Management

Get Started

Real-Time Visibility and Insights



In-transit visualization. Business insights.

With Oracle Internet of Things Fleet Monitoring Cloud Service, get accurate, up-to-the-minute information about your fleet across the globe. Use advanced search capabilities to track vehicles or drivers. In each vehicle, plug a data logger into the OBD II port to transmit data about location, speed, and performance.

With its prebuilt business dashboards and rich predefined key performance indicators, you'll be able to track your fleet—availability, active trips, fuel costs, utilization, speed violations, and more—at a single glance.



Operational Efficiency

Make your fleet work for you.

Leverage out-of-the-box reporting capabilities to generate reports (trip, fleet, fuel consumption, and more) for anyone, anywhere, anytime. All with the click of a button. Get the desired contextual information by setting appropriate filters.



Improved Customer Satisfaction

With real-time information about the vehicle route and performance, you can improve service levels and comply with industry regulations. Constantly updated and reliable shipment information significantly improves customer satisfaction.



Reduced Costs

Manage your fuel costs by monitoring fuel-efficient driving habits (speeding, idling, harsh braking). Optimize vehicle performance with preventive maintenance schedules. Use Geo-fencing to prevent unauthorized routes, stops, and stolen vehicles.



Vehicle and Driver Safety

Benchmark and influence safe driving behavior by monitoring events like speeding and harsh braking. And improve driver safety by tracking vehicle health and predicting maintenance to avoid breakdowns and failures on the road.

Improved
Logistic
Services

Real-Time
Visibility and
Insights

**Operational
Efficiency**

Real-Time
Incident
Management

Custom Event
Rules

Improved
Logistic
Services

Geographic
Areas

Supply Chain
Management

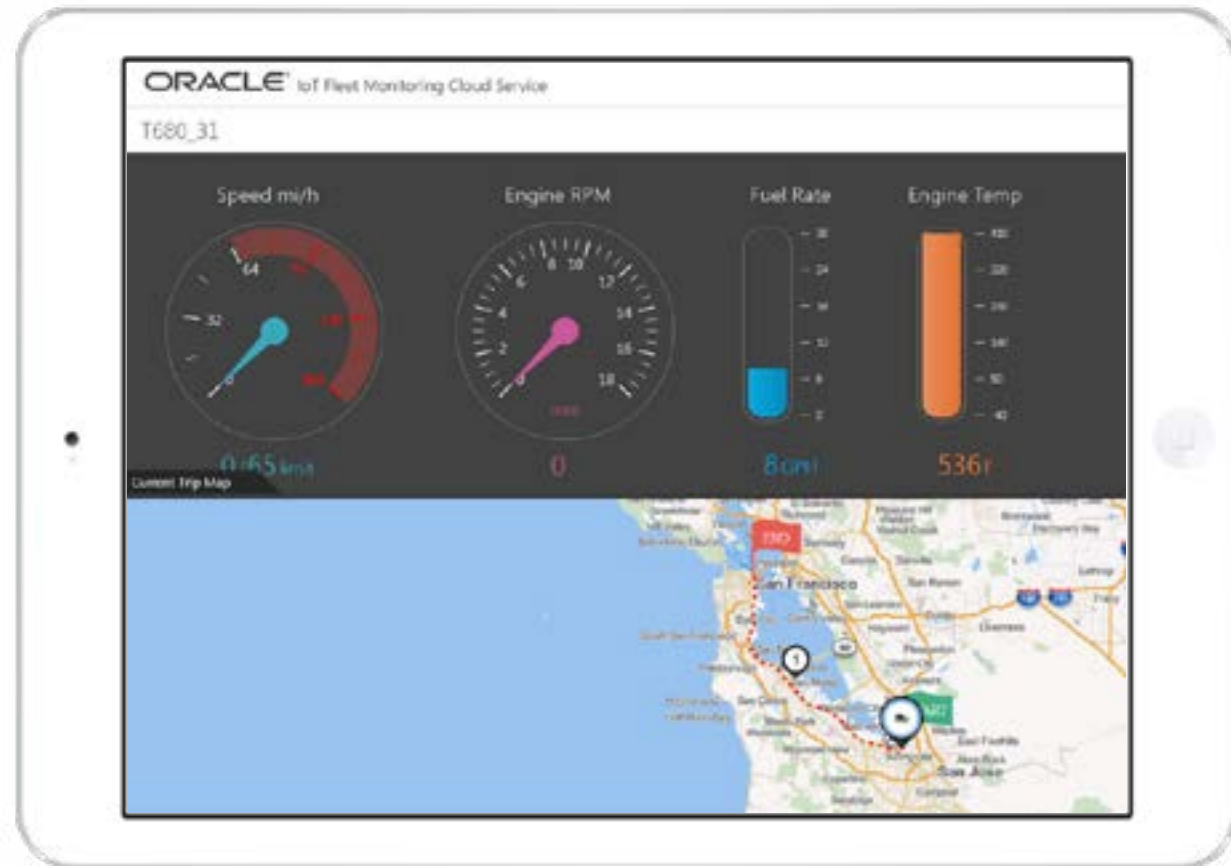
Get Started

Real-Time Incident Management

Evaluate the health of your fleet.

View the status of your entire fleet at a glance. Incidents are reported with priority and type. Get further details by clicking on an incident to determine the root cause.

Add comments and see the progress of each incident. And, by integrating with Oracle Service Cloud, Oracle Enterprise Resource Planning, and Oracle Supply Chain Management products, you can turn incidents into actionable service calls.



Improved
Logistic
Services

Real-Time
Visibility and
Insights

Operational
Efficiency

Real-Time
Incident
Management

Custom Event
Rules

Improved
Logistic
Services

Geographic
Areas

Supply Chain
Management

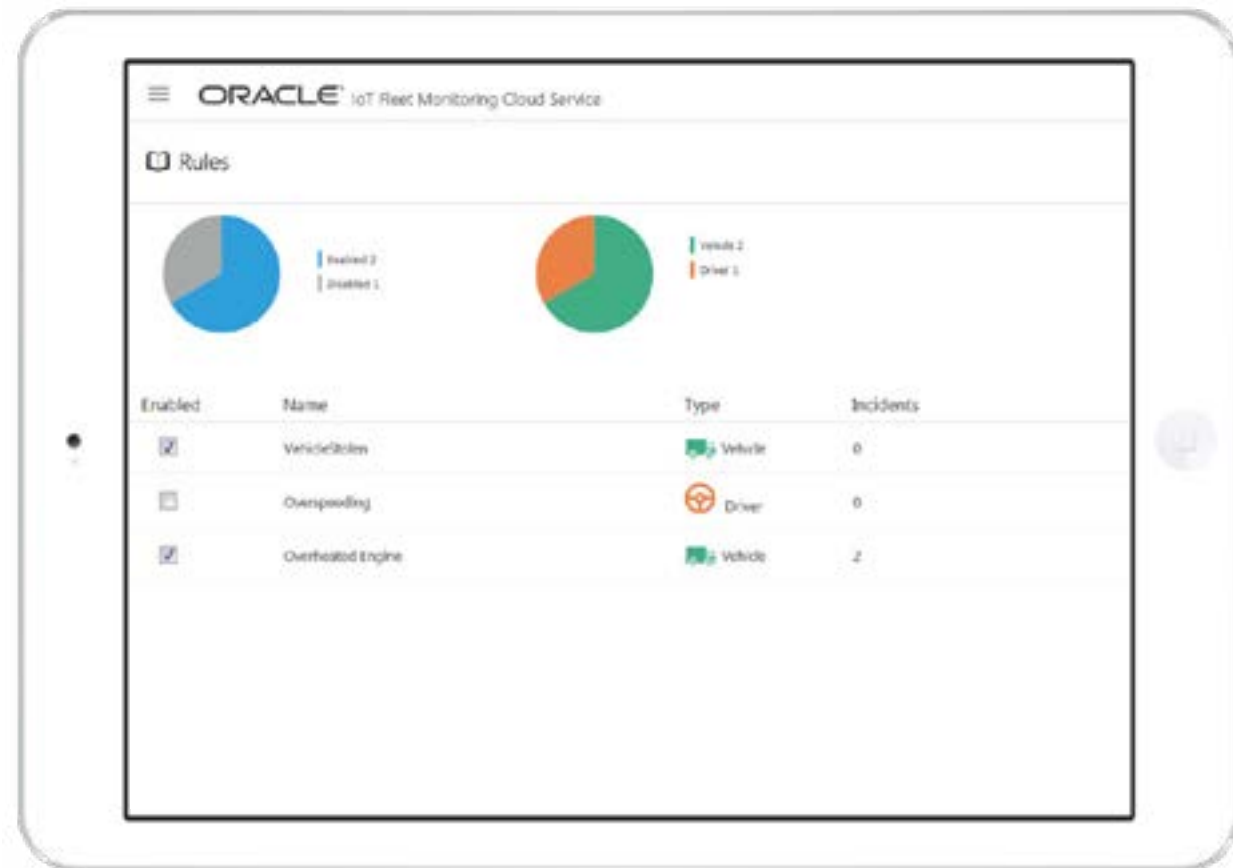
Get Started

Custom Event Rules

Define unsafe conditions.

Customize how you manage your fleet by assigning rules to vehicles or to a specific driver. For example, define rules that detect high-speed driving to enforce safe and fuel-efficient driving habits.

Alerts and incidents generate notifications in Oracle Service Cloud, which trigger a workflow in Oracle Supply Chain Management - Transportation Management and send notifications to mobile devices.



Improved
Logistic
Services

Real-Time
Visibility and
Insights

Operational
Efficiency

Real-Time
Incident
Management

Custom Event
Rules

Improved
Logistic
Services

Geographic
Areas

Supply Chain
Management

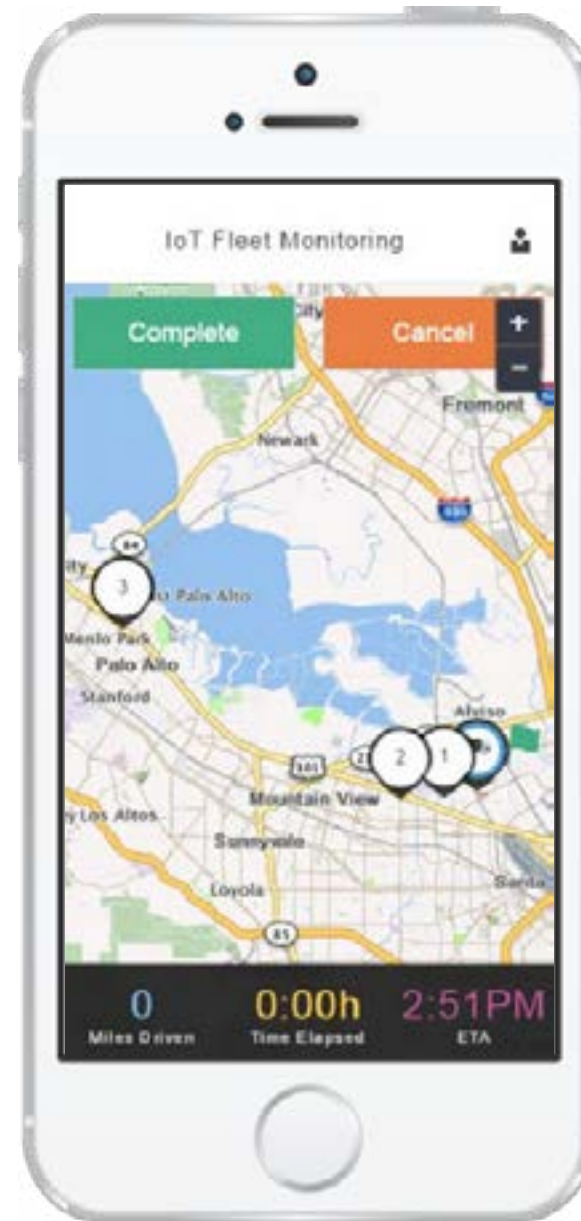
Get Started

Improved Logistic Services

Driver mobile app.

Drivers are a key part of every successful fleet, and the mobile app enables drivers to review trip information and receive changes in real time.

Drivers can set the starting location and waypoints, and manage messages from the fleet manager.



Improved
Logistic
Services

Real-Time
Visibility and
Insights

Operational
Efficiency

Real-Time
Incident
Management

Custom Event
Rules

Improved
Logistic
Services

Geographic
Areas

Supply Chain
Management

Get Started

Geographic Areas

Customize maps and create boundaries.

Create geographic boundaries that raise alerts when a vehicle enters or exits the designated area. For example, define predetermined safe areas that indicate where your drivers can stop for rest.

Use notifications to alert customers when a vehicle arrives at their facility or to prevent unauthorized vehicle movement from your facility.



Improved
Logistic
Services

Real-Time
Visibility and
Insights

Operational
Efficiency

Real-Time
Incident
Management

Custom Event
Rules

Improved
Logistic
Services

Geographic
Areas

Supply Chain
Management

Get Started

Supply Chain Management

Plug in to supply chain management.

The overarching goal of supply chain digitization is the systematic exchange of information. Oracle Internet of Things Fleet Monitoring Cloud Service lets you integrate with Oracle Supply Chain Management—Transportation Management and Oracle Logistics Cloud.

This integration gives a high degree of visibility and transparency into the fleet and system and allows you to:

- Pull in shipment information and send information about vehicles in transit so that you can provide real-time updates about shipments and lead times to your customers
- Generate incidents and alerts about shipment delays or vehicle breakdowns so that you can start possible mitigation action
- Provide insights into the total cost of ownership through driver hours of service, fuel consumption, and maintenance events



Improved
Logistic
Services

Real-Time
Visibility and
Insights

Operational
Efficiency

Real-Time
Incident
Management

Custom Event
Rules

Improved
Logistic
Services

Geographic
Areas

Supply Chain
Management

Get Started

[Get Started](#)

Learn More

- View data sheets, FAQs, pricing, and additional resources on the [Oracle IOT Fleet Monitoring Cloud Service](#) product page.
- Purchase a subscription and get started by visiting the [Oracle Help Center](#).

Connect

Twitter: [@Oracle Cloud](#) [@OracleIOT](#)

Facebook: [Oracle Cloud](#)

LinkedIn: [Official Oracle Cloud Group](#)

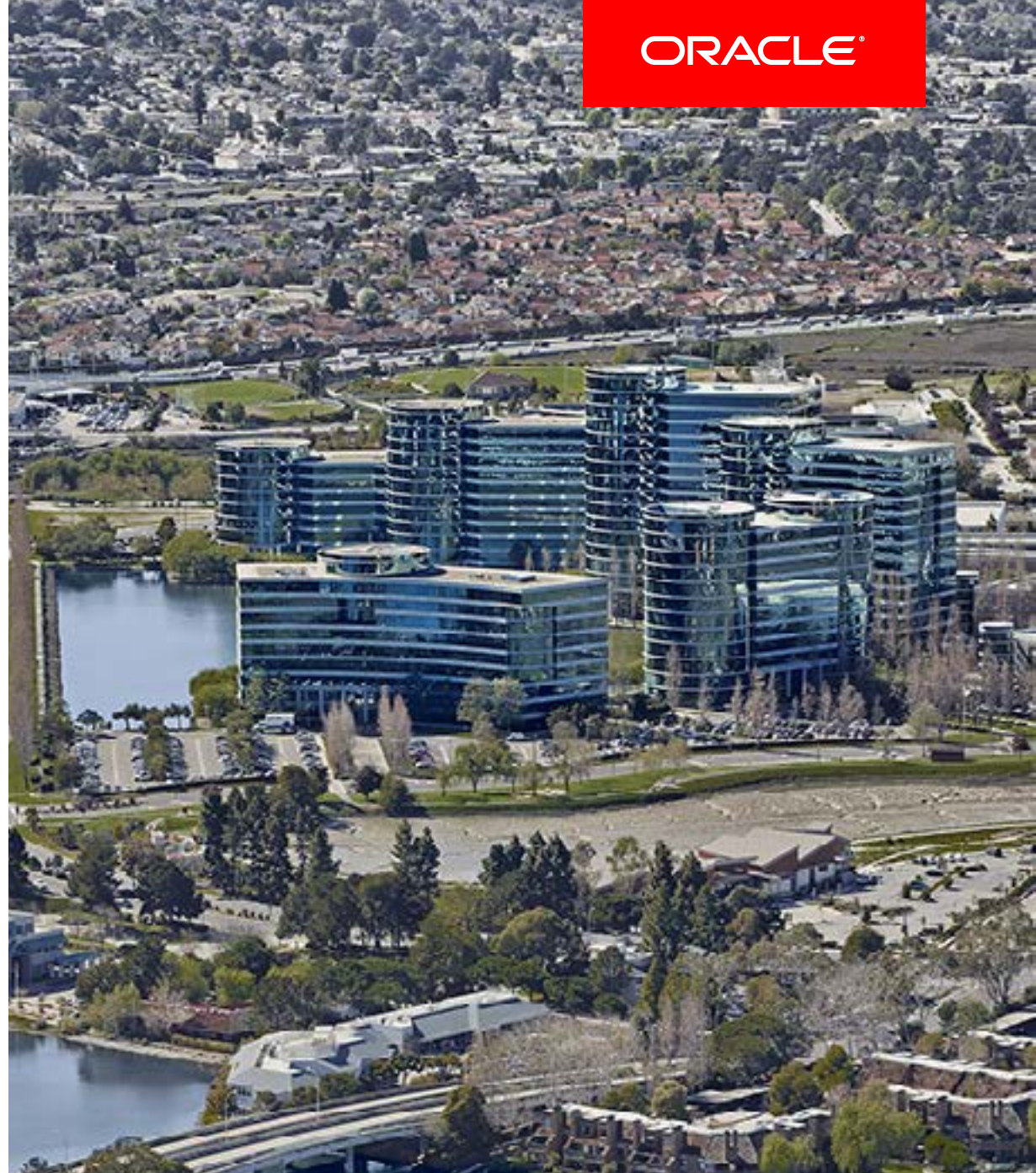
YouTube: [Oracle Cloud Channel](#)

Visit

Visit our Oracle Cloud community.

[Oracle Events](#)

[Oracle Cloud Solutions Blog](#)



Improved
Logistic
Services

Real-Time
Visibility and
Insights

Operational
Efficiency

Real-Time
Incident
Management

Custom Event
Rules

Improved
Logistic
Services

Geographic
Areas

Supply Chain
Management

Get Started

Safe Harbor

The preceding is intended to outline our general product direction. It is intended for information purposes only, and may not be incorporated into any contract. It is not a commitment to deliver any material, code, or functionality, and should not be relied upon in making purchasing decisions. The development, release, and timing of any features or functionality described for Oracle's products remains at the sole discretion of Oracle.



Aug. 6, 2018

Copyright © 2019 Oracle and/or its affiliates. All rights reserved.

This document is provided for information purposes only, and the contents hereof are subject to change without notice. This document is not warranted to be error-free, nor subject to any other warranties or conditions, whether expressed orally or implied in law, including implied warranties and conditions of merchantability or fitness for a particular purpose. We specifically disclaim any liability with respect to this document, and no contractual obligations are formed either directly or indirectly by this document. This document may not be reproduced or transmitted in any form or by any means, electronic or mechanical, for any purpose, without our prior written permission.

Oracle and Java are registered trademarks of Oracle and/or its affiliates. Other names may be trademarks of their respective owners.

Intel and Intel Xeon are trademarks or registered trademarks of Intel Corporation. All SPARC trademarks are used under license and are trademarks or registered trademarks of SPARC International, Inc. AMD, Opteron, the AMD logo, and the AMD Opteron logo are trademarks or registered trademarks of Advanced Micro Devices. UNIX is a registered trademark of The Open Group.