

Transportation Intelligence

Effective decision making is vital to the success of any logistics organization. Transportation Intelligence promotes better supply chain decisions by providing greater insight into both internal operations and trading partner performance. It provides you with the information needed to understand what’s happening in your supply chain, so you can make corrections and achieve your organizational goals.

MEASURE PERFORMANCE, MONITOR TRENDS & TAKE ACTION

Setting and tracking goals within your transportation organization are keys to reducing costs and improving customer service. Transportation Intelligence leverages extensive transportation data from Oracle Fusion Cloud Transportation Management to provide detailed analysis of key transportation metrics – metrics that impact your organization’s profitability. Transportation Intelligence offers user-friendly dashboards that monitor key performance indicators while also allowing seamless navigation between historical and operational information – providing visibility into detailed causal data and leading to more informed operational decision making. In other words, the solution provides an organization with the ability to quickly analyze, adapt, and execute changes in day-to-day operations in order to improve performance.

Key Features

- User-defined metrics
- Configurable reports and dashboards
- Monitor metrics against business and industry targets, benchmarks, and forecasts
- Drill-down from metrics into operational data
- Role-based alerting and notification
- Store distribution management
- Material handling equipment integration

Key Business Benefits

- Single, consistent view of transportation data
- Quickly identify trends in transportation operations
- Influence operational decisions based on historic data
- Promote effective, impartial decision making, at multiple levels of the organization
- Provide granular visibility into transportation data and metrics
- Eliminate need to manage and maintain an independent data warehouse

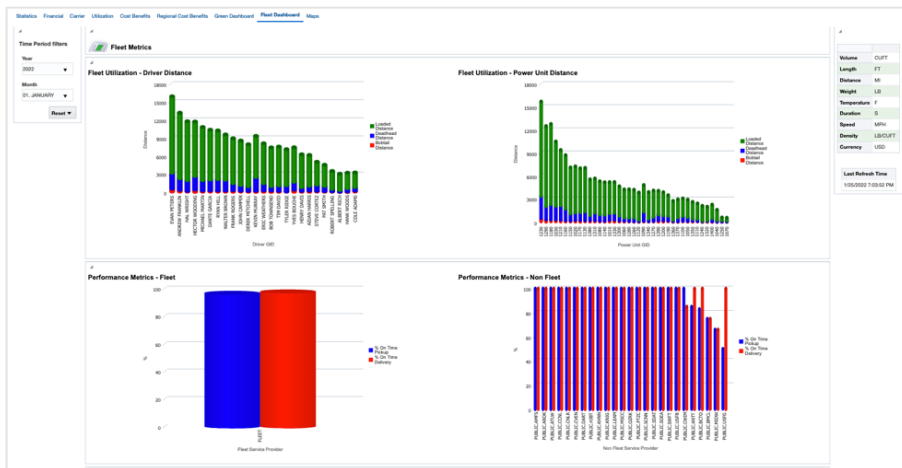


Figure 1. Transportation metrics are defined, managed, and viewed through user-defined reports and dashboards.

DEFINING KEY PERFORMANCE INDICATORS

Transportation Intelligence offers the breadth and depth to provide visibility to the right measurements for your organization's success. Transportation metrics can be defined for all relevant business needs. Transportation Intelligence includes flexible analysis for:

- Orders, Shipments, Lines, and Stops
- Invoices and Invoice Lines
- Carrier Performance / Scorecards
- Sustainability
- Tracking Events
- Carrier Commitments
- Claims
- Quotes
- Drivers
- Planning and System Activity

THE RIGHT INFORMATION, IN THE RIGHT PLACE, FOR THE RIGHT USER

Transportation Intelligence provides the information needed to support a transportation executive's long term objectives, a manager's medium and short term goals, as well as a transportation analyst's day-to-day decision making needs. Metrics, reports, and dashboards can be created and configured to support a variety of needs while data can be sliced and diced accordingly and can even be accessed via mobile devices. Transportation Intelligence provides embedded business intelligence into your operational transportation environment. It provides actionable insight, coordinated with fact-based decision support, together providing the knowledge needed to keep transportation operations moving in the right direction

Related Data Sheets

Transportation Intelligence is a feature of Oracle Transportation Management and the Oracle suite of logistics solutions.

Related data sheets include:

- Oracle Transportation Management
- Oracle Transportation Operational Planning
- Freight Payment, Billing, and Claims
- Transportation Cooperative Routing
- Transportation Sourcing
- Oracle Fleet Management
- Oracle Logistics Network Modeling

CONNECT WITH US

Call +1.800.ORACLE1 or visit oracle.com.

Outside North America, find your local office at oracle.com/contact.

 blogs.oracle.com

 facebook.com/oracle

 twitter.com/oracle

Copyright © 2022, Oracle and/or its affiliates. All rights reserved. This document is provided for information purposes only, and the contents hereof are subject to change without notice. This document is not warranted to be error-free, nor subject to any other warranties or conditions, whether expressed orally or implied in law, including implied warranties and conditions of merchantability or fitness for a particular purpose. We specifically disclaim any liability with respect to this document, and no contractual obligations are formed either directly or indirectly by this document. This document may not be reproduced or transmitted in any form or by any means, electronic or mechanical, for any purpose, without our prior written permission.

This device has not been authorized as required by the rules of the Federal Communications Commission. This device is not, and may not be, offered for sale or lease, or sold or leased, until authorization is obtained.

Oracle and Java are registered trademarks of Oracle and/or its affiliates. Other names may be trademarks of their respective owners.

Intel and Intel Xeon are trademarks or registered trademarks of Intel Corporation. All SPARC trademarks are used under license and are trademarks or registered trademarks of SPARC International, Inc. AMD, Opteron, the AMD logo, and the AMD Opteron logo are trademarks or registered trademarks of Advanced Micro Devices. UNIX is a registered trademark of The Open Group. 0322

Disclaimer: This document is for informational purposes. It is not a commitment to deliver any material, code, or functionality, and should not be relied upon in making purchasing decisions. The development, release, timing, and pricing of any features or functionality described in this document may change and remains at the sole discretion of Oracle Corporation.

