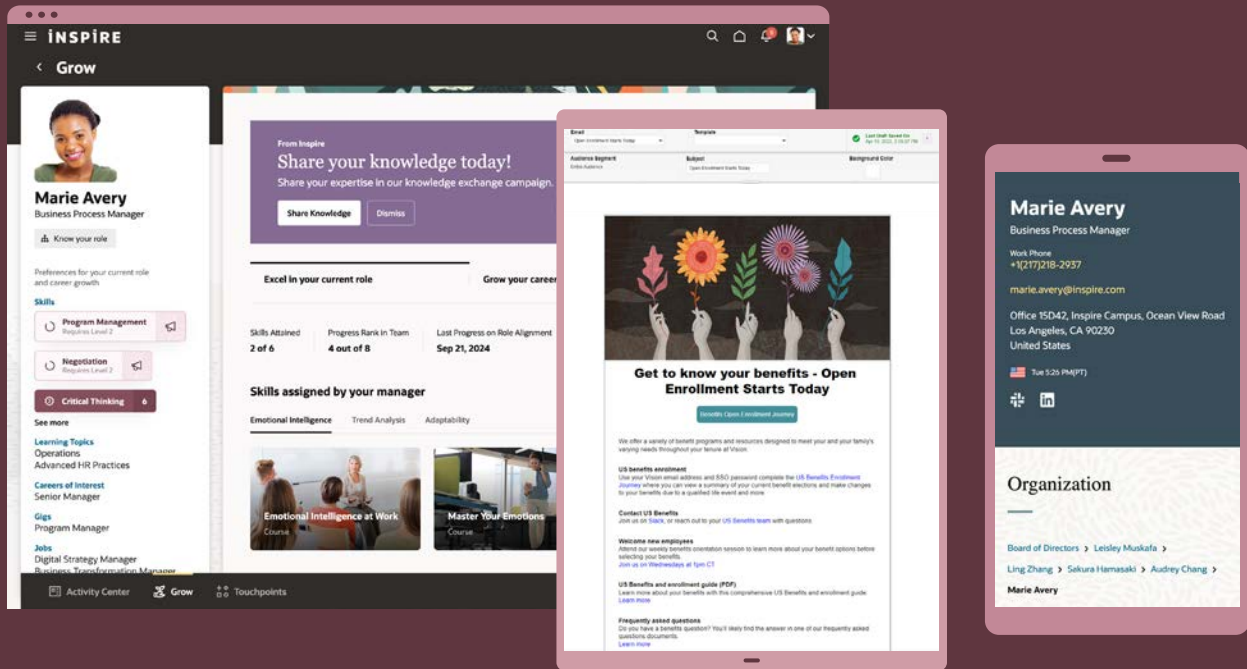


# Oracle ME

A complete employee experience platform

# Oracle ME



Oracle ME is a complete employee experience platform that guides employees through professional and personal activities, delivers responsive HR service support, and streamlines communication across the organization. You also get tools to strengthen the manager-employee relationship, connect employees with their peers, and help employees develop the skills they need to support organizational agility and success.

The platform consists of eight Oracle Fusion Cloud HCM solutions:

[Introduction](#)  
[What's new](#)

[Connections](#)  
[Communicate](#)  
[Touchpoints](#)  
[Celebrate](#)

[Grow](#)  
[Journeys](#)  
[Digital Assistant](#)  
[HR Help Desk](#)



## Provide experiences that bring out the best in every person

Oracle ME is a complete employee experience platform that guides employees through professional and personal activities, delivers responsive HR service support, and streamlines communication across the organization. You also get tools to strengthen manager-employee relationships, connect employees with their peers, and help employees develop the skills they need to support organizational agility and success.

## Deliver personalized experiences while keeping employee data secure

Built as part of Oracle Cloud HCM, Oracle ME allows you to create personalized experiences to address unique employee needs and circumstances by drawing from one source of people and work data.

## What's new?

### **Introducing Oracle Communicate employee events and the new events and communications hub**

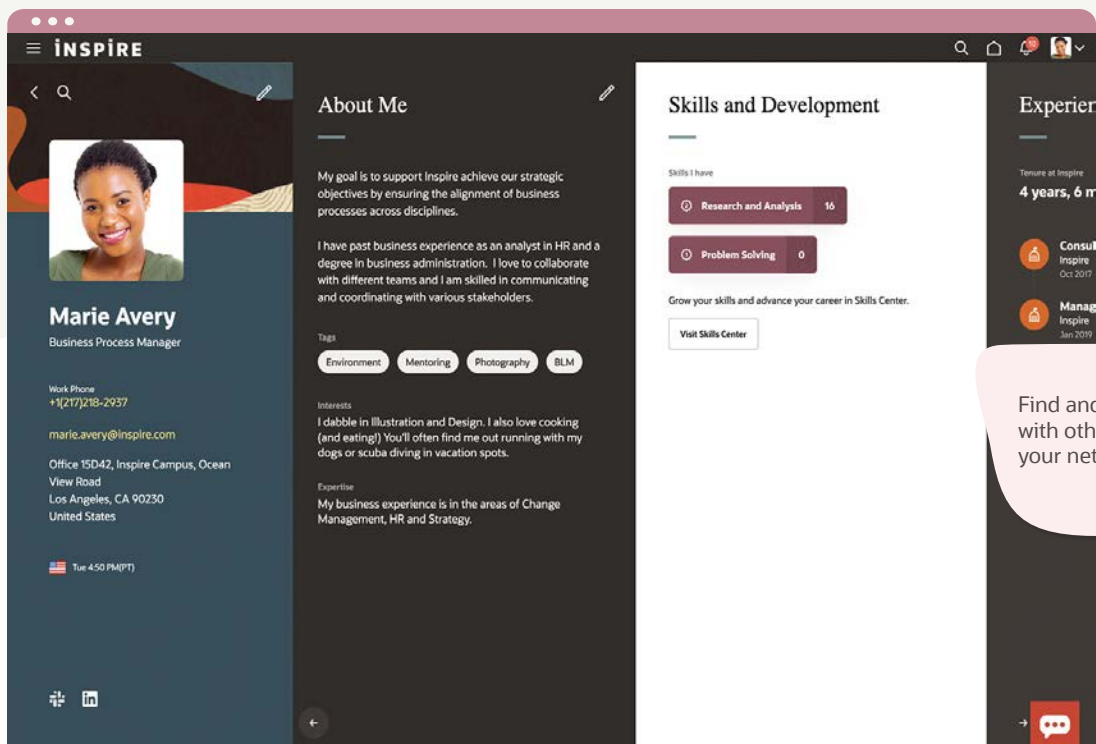
Oracle Communicate is built on the Oracle ME employee experience platform and now offers tools that help you drive effective change management and employee participation across the organization using events and targeted communications. Oracle Communicate empowers your HR team, managers, and employees to create internal events and communications that help shape your workplace culture and drive behaviors that matter to your organization. Unified with Oracle Cloud HCM, it connects communications and event engagement with your people data and processes, allowing you to better refine your audiences and make every interaction more relevant.

[🔗 Learn more about Oracle Communicate](#)



# Oracle ME | Connections

Oracle Connections is an interactive workforce directory and organization chart that brings people together by making it easier to search for and connect with people in the organization.

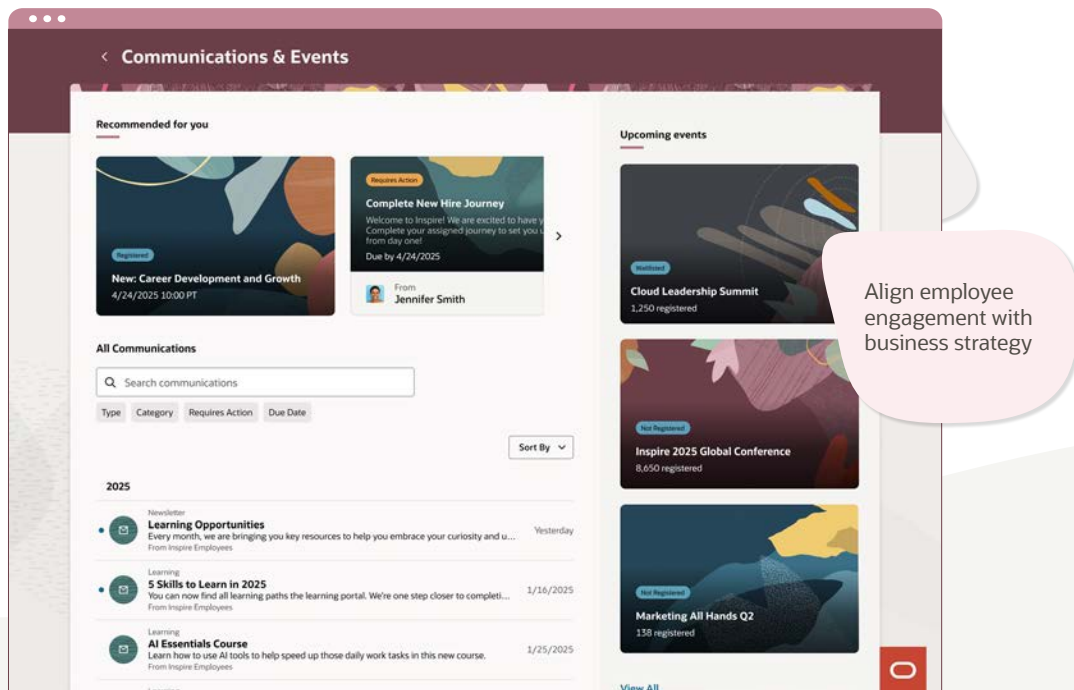


## With Oracle Connections, you can

- Help workers quickly find and connect with others who have specific skills, interests, or experiences.
- Enable workers to share feedback on each other's walls and highlight personal interests.
- Allow employees to promote their accomplishments, skills, and career experience.
- Leverage generative AI to draft the "About Me" content for an employee's Connections profile.

# Oracle ME | Communicate

Enable HR, business leaders, and managers to drive employee participation, growth and performance with targeted communications and internal events using a solution connected to workforce data.



## Employees can

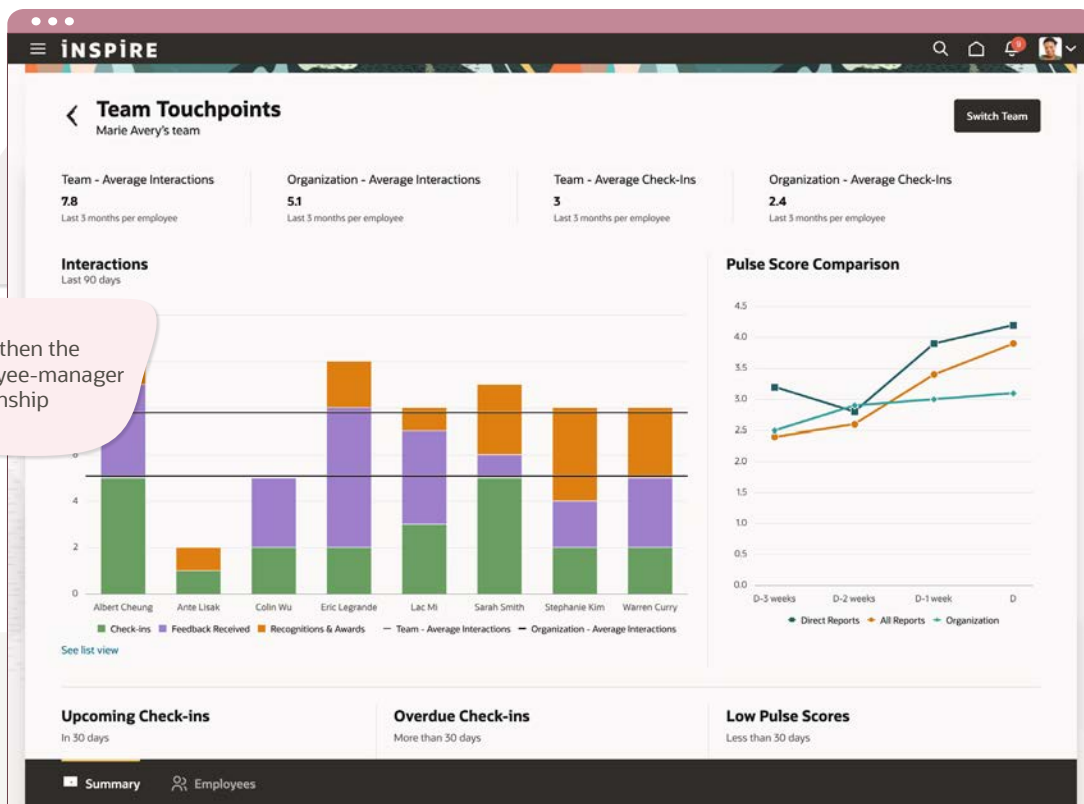
- Gain a single hub for communications and updates, including upcoming and past events
- Receive AI-powered recommendations based on HR data, interests, and previous engagement
- Promote learning events tied directly to professional development
- Create events to increase peer connections and a sense of belonging across the workforce

## Managers can

- Use a flexible audience builder to automate outreach to the right people at the right time
- Automate reminders for events, training, or other priorities for precise audiences
- Create events based on LOB data without navigating team email aliases
- Drive change management with precise, real time insights on actions tied to initiatives
- Derive event insights using analytics and prebuilt dashboards with key success metrics

# Oracle ME | Touchpoints

Provide managers with personalized team insights, recommended actions, and continuous check-ins so they can empower their people to show up as their best selves every day.



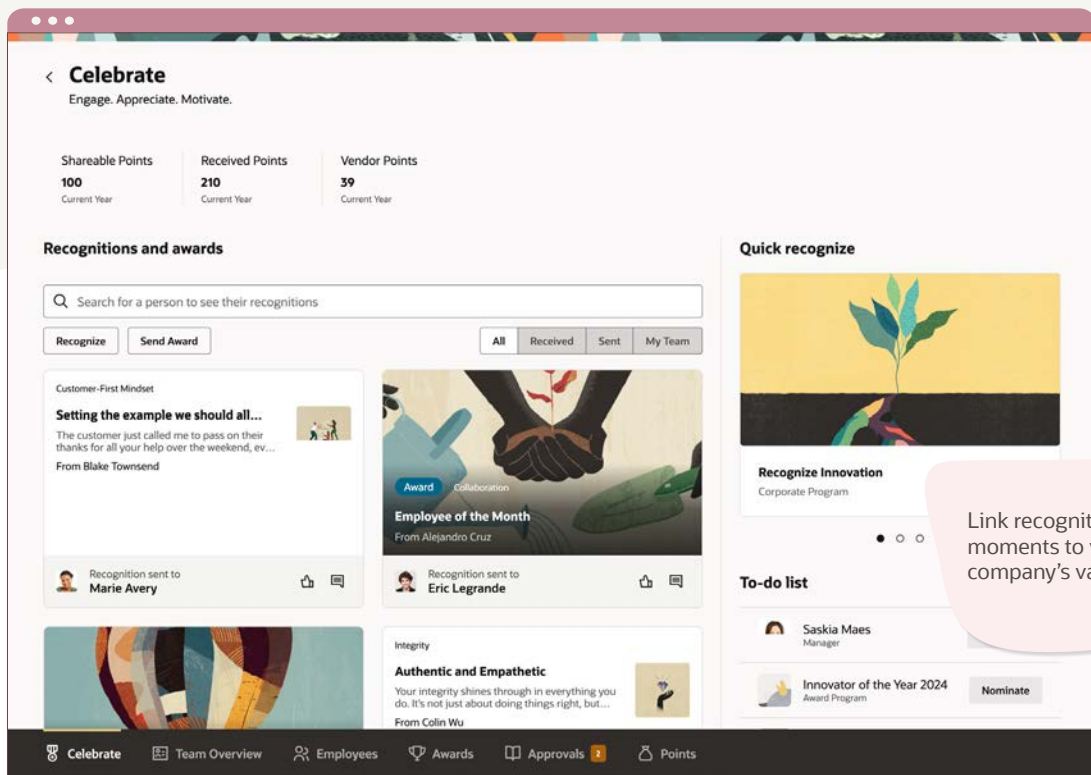
Strengthen the employee-manager relationship

## Managers can

- Develop stronger leadership skills with recommended actions that help manage their team
- Make employees feel heard by discussing their sentiment trend and listening to their needs
- Add recommended discussion topics to check-ins, such as goals, skills, and more

# Oracle ME | Celebrate

Bring unsung heroes to the forefront and drive unique cultural values through tailored, in-the-moment peer-to-peer recognition and holistic engagement insights.



Link recognition moments to your company's values

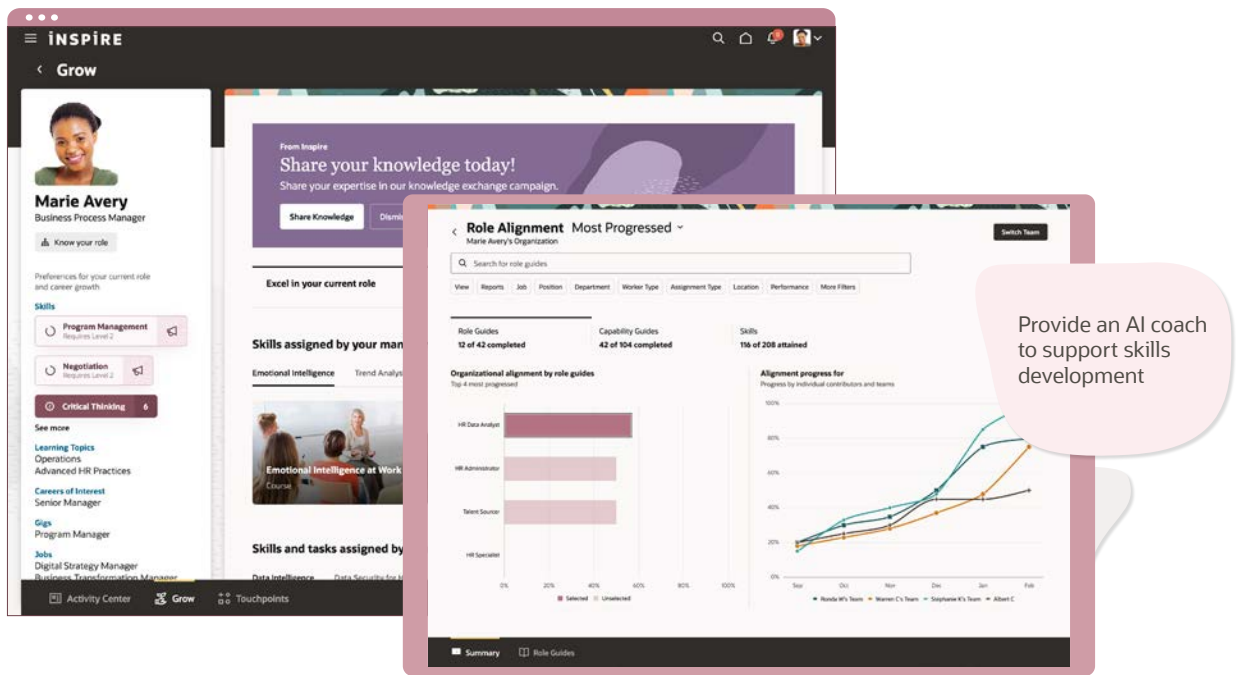
## HR can

- Personalize recognition and reward programs to different segments of the organization
- Improve company culture by tying company values to moments of recognition
- Help workers recognize their peers for milestones or nominate co-workers for an award
- Natively connect Oracle Payroll to more easily reward their people with direct cash awards



# Oracle ME | Grow

Leverage skills and talent data in one HCM solution to empower employees, business leaders, and HR to uncover and develop the skills they need for organizational agility and success.

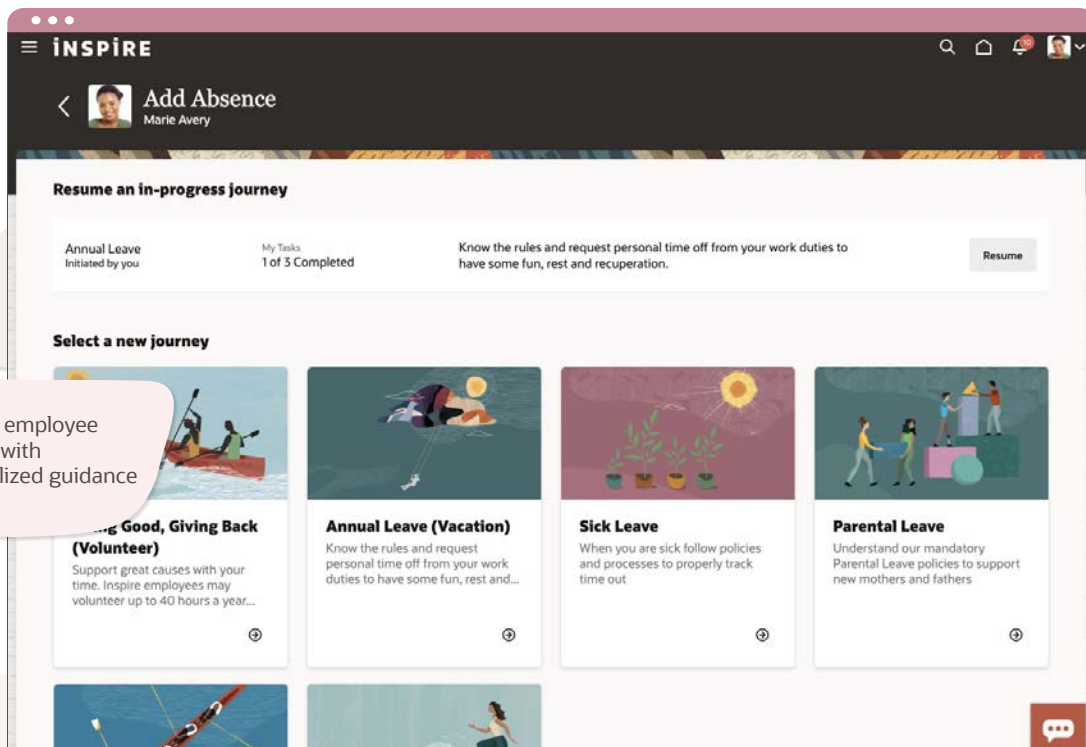


## HR can

- Provide employees multiple ways to grow, such as gigs and development journeys
- Empower worker to discover personalized AI-driven development and career opportunities
- Give managers a clear picture of their team's skills and tools to help close skills gaps
- Help leaders develop talent to drive specific business outcomes with strategic role guides

# Oracle ME | Journeys

Oracle Journeys delivers personalized guidance to support employees through professional and personal workflows, all with one user experience, powered by one system of record.

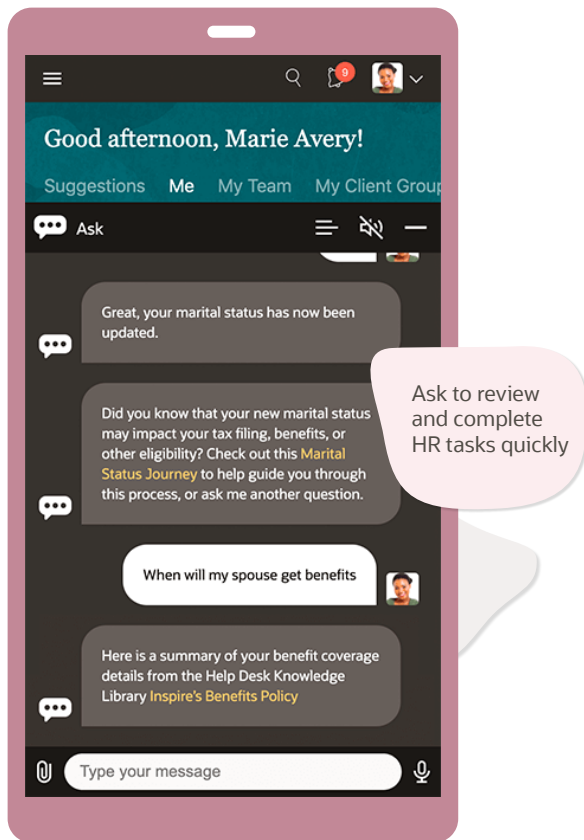


## With Oracle Journeys, you can

- Provide employees with a consumerlike experience to find and launch relevant journeys
- Draw from one source of people data to recommend, assign, and trigger tailored journeys
- Surface contextual analytics, training materials, and instructions within journeys
- Access a library of more than 30 best practice journeys and tasks out of the box
- Build personalized guidance for employees across the enterprise, all without IT assistance

# Oracle ME | Digital Assistant

Oracle Digital Assistant provides conversational voice- and AI-based support that enables employees to quickly complete approvals and promotion workflows and access help desk information.



## With Oracle Digital Assistant, you can

- Enable employees to get answers by conversing with an AI-powered digital assistant—via text or voice
- Communicate with the digital assistant via multiple channels, including SMS, Slack, and Microsoft Teams
- Get started with and build upon more than 90 prebuilt, AI-powered transactions
- Engage with the digital assistant to quickly complete approvals and promotion workflows
- Proactively provide answers to employees by combining Digital Assistant and Oracle HR Help Desk

# Oracle ME | HR Help Desk

Oracle HR Help Desk is a unified service request management solution built to support all service center needs. With Oracle HR Help Desk, employees get faster, more consistent responses, and comprehensive case management for complex inquiries.

The screenshot displays the Oracle HR Help Desk interface. The top navigation bar includes the 'INSPIRE' logo, a search icon, a home icon, a notification bell, and a user profile icon. The main header shows 'HR HelpDesk' and a 'Create Request' button. Below the header is a search bar with the category 'My Open Requests' and a list of filters: 'Critical 32', 'Discrimination 3', 'Severity', 'Status', 'Last Updated', 'New', and 'Waiting'.

The main content area is divided into two sections. On the left is the 'Help Desk Management' sidebar, which includes a 'Critical Service Requests' summary and a 'Backlog by priority' pie chart. The pie chart shows the distribution of requests by priority: Overdue (dark purple), High (medium purple), Medium (light purple), Low (very light purple), and None (white).

On the right is a table of 12 requests. The table has columns for Reference Number, Title, Severity, Status, Contact, Last Updated, and a menu icon. The data is as follows:

Reference Number	Title	Severity	Status	Contact	Last Updated	
00004543	Compare medical plans from last year	High	New	Carmen Strata	February 10, 2025	...
00004523	Incorrect Pay	High	In Progress	Maya Devlin	February 09, 2025	...
00004531	Building access denied	Medium	In Progress	Thanapipat Sukmeesubraman	February 09, 2025	...
00003343	Benefits enrollment not working	High	Waiting	Marcus Smith	February 07, 2025	...
00034453	Grievance against a co-worker	Medium	In Progress	Colin Wu	February 07, 2025	...
00003426	Notify manager of medical leave	High	New	Carl Benson	February 07, 2025	...
00003290	Car Allowance	High	In Progress	Maya Devlin	February 05, 2025	...
00006320	What is my vacation balance?	Medium	Waiting	Thanapipat Sukmeesubraman	February 05, 2025	...
00003343	Can I get early payment?	High	New	Sam Jackson	February 05, 2025	...
00034453	Leave during visa renewal	Medium	In Progress	Colin Wu	February 05, 2025	...
00004543	...	Medium	Waiting	Maya Devlin	February 04, 2025	...

Resolve inquiries faster with an AI-enabled knowledgebase

## With Oracle HR Help Desk, you can

- Provide a complete HR service delivery solution that's unified with Oracle Cloud HCM and fully managed by HR
- Submit inquiries via multiple channels—including digital assistant, SMS, email, and social platforms
- Automate replies and route complex inquiries to the right HR person
- Protect sensitive data with a help desk using the same security model for all Oracle Cloud products
- Provide a robust knowledgebase of information that's readily available to both workers and HR professionals



“The Oracle platform enables us to integrate and harmonize our HR processes, removing complexity and enabling our HR function to respond with speed and insight to the evolving needs of our employees and business.”

**Lisbeth Nielsen**  
Head of People Business Services  
Nokia

# Elevate the employee experience

Employee experience is crucial for retaining workers and can give organizations a competitive advantage when attracting talent. Workers expect their employee experiences to support their individual needs, provide them with opportunities to be heard, and give them a sense of connection to their workplace culture so they can bring the best version of themselves to work. Oracle ME helps HR deliver personalized and flexible experiences to propel employee satisfaction, engagement, and productivity—all while keeping employee data secure.

[Learn more](#)

## Connect with us

Call +1.800.ORACLE1 or visit [oracle.com](https://www.oracle.com)

Outside North America, find your local office at [oracle.com/contact](https://www.oracle.com/contact)

Copyright ©2025, Oracle and/or its affiliates. All rights reserved. This document is provided for information purposes only, and the contents hereof are subject to change without notice. This document is not warranted to be error-free, nor subject to any other warranties or conditions, whether expressed orally or implied in law, including implied warranties and conditions of merchantability or fitness for a particular purpose. We specifically disclaim any liability with respect to this document, and no contractual obligations are formed either directly or indirectly by this document. This document may not be reproduced or transmitted in any form or by any means, electronic or mechanical, for any purpose, without our prior written permission.

