

Oracle Hospitality Cruise Materials Management

Materials Management is a powerful, purpose-built and highly-automated system for cruise supply chain, enabling shore-based managers to have complete transparency and control over all consumable items required in ship operations.

PRODUCT OVERVIEW

Fleetwide and real-time data transfer provides complete information on a constant basis – including full tracking of POS information and the resulting drawdown in consumable stock on board. Historical records facilitate analysis of consumption patterns, seasonal variation, price fluctuation and vendor performance.

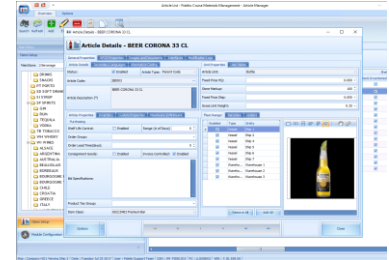
Materials Management offers multiple modules, enabling the software to be tailored to meet the individual operators' needs. On the main launch panel, crew can find information such as calendar, voyage plan, daily operational overview, version number, and utilities. All of the modules can also be accessed from the launch panel.

ARTICLE MANAGER

Oracle Hospitality Cruise Article Manager provides a general repository containing all critical information related to each consumable used across a fleet. It offers a robust tool that can manager a large number of items. Information is provided in multiple languages and currencies and can be converted into all relevant units. Every article can be accessed from on board any vessel or from multiple headquarters. Articles can be maintained from shore side headquarters to ensure consistency and accuracy of article details and security restrictions can be added in order to limit access to certain articles. Close integration with Microsoft Excel makes the system user-friendly and easy to use.

PURCHASING

Oracle Hospitality Cruise Purchasing module helps cruise lines place purchase orders and track those orders to suppliers. It provides the ability to create automate purchase orders based on forecasted order requests and enables emailing to vendors. Management can see an overview of purchase orders at any time. The Purchasing module enables tracking of true inventory costs including duty, brokerage, and freight. Using this module, you can also manage ship to shore



Article Manager provides a central repository of all consumables onboard.

requests, monitor price developments, manage multiple shipping/billing addresses and purchase order authorization controls for each use or group of users. Purchase orders or warehouse transfers are created automatically for buyer's review and for added insurance, a purchase order can only be issued by the authorized purchasing department.

QUOTE MANAGER

Oracle Hospitality Cruise Quote Manager can analyze and compare the relative costs of consumables supply and subject to vessel's itinerary. The system provides guidance to management on an optimal purchase strategy, based on various location, timing and prices. By tracking historical price data, Quote Manager enables you to compare various suppliers bidding for the same products/services. Easily manage bi awards in multiple geographic areas with this robust tool.

STOCK VIEWER

Oracle Hospitality Cruise Stock Viewer provides an overview of all stock for any main store within various departments. It is used by shipboard operations to deliver real-time information on products currently in use and in stock onboard. Stock on hand is deployed by store or point of consumption for easy identification. Past history of stock as well as statistical information related to stores, sub-stores, specific items, and recent as well as past product movement (loadings, issues transfers) are all displayed.

INVENTORY MANAGER

Oracle Hospitality Cruise Inventory Manager manages onboard and fleet-wide inventory. It supports full cycle counts and retroactive entry of counted items. It can manage spot checks or complete inventories on any product line, even randomly or purposefully selecting a range of products. It also supports inventory adjustment or other rectification needs and runs on mobile devices.

MOVEMENTS

Oracle Hospitality Cruise Movements provides an overview for a ship's internal requisition requests, Documents can be created manually by using templates or recipes. The systems offer a simple, user-friendly GUI for all types of transactions. Dynamic search allows items selection based on available stock, enabling real-time cost control and visibility. It features a flexible authorization system and built-in store issuing schedule.

RECEIVING

Oracle Hospitality Cruise Receiving module organizes the loading and offloading of goods for fleet of vessels and warehouses and is supported on mobile devices. It handles purchase orders, loadings, WH transfers and returns to vendor. The Receiving module can manage multi-receiving capability against a single PO and three-way match against invoices. Information can be easily searched, imported into Excel and print for reporting. It provides customizable vendor evaluations and can help streamline communication with procurement through action events.

REQUEST

Oracle Hospitality Cruise Request module manages the materials ordering process between the ship and headquarters. And order request can be created based on forecasted consumption. In depth reporting on each item allows for analysis on forecasted quantities. And the system provides the ability to recalculate forecasted figures in the event of spoilage or updated passenger counts. It can also

automatically generate suggested order quantities, based on past consumption by season, menu type and future number of passengers. The system issues “a request” while onboard to advise the shore side purchasing department of supply needs. It provides various methods for automated item selection. Only items defined in Article Manager (without prices and vendors) can be requested.

SALES OVERVIEW

Oracle Hospitality Cruise Sales Overview provides a tool to get the most up to date restaurant and bar stock deductions via a seamless integration with Symphony POS, Oracle’s cashless system. Advanced real-time reporting capability onboard and shore side provides: fleet revenue/margin comparison, preview of individual checks; revenue by hour/passenger age, gender or nationality, top X sales, and pivot-table demographics reporting.

COST VIEWER

Oracle Hospitality Cruise Cost Viewer provides real-time reporting of food and beverage costs to management. And by tracking the number of passengers and crew sailing, it can calculate the cost per passenger per day. With this information, management can make smarter, more informed purchasing decisions.

TEMPLATE MANAGER

Oracle Hospitality Cruise Template Manager enables you to create internal requisition forms as template to save time. These templates can replace traditional paper requisition forms and can be used throughout the system. Templates are also useful in other areas like Order Request or Purchase Order.

VENDOR MANAGER

Oracle Hospitality Cruise Vendor Management is a comprehensive vendor directory that can be organized alphabetically by region/zone or name. In Vendor Manager, you can store a complete record of company preferred suppliers, port agents and travel agents. Each record can include names of contact references, addresses, pricing, packing, and more. Individual suppliers’ documents, such as invoices and purchase orders, can also be stored. You can also directly email any vendor from the system.

WAREHOUSING

Oracle Hospitality Cruise Warehousing is a shore side tool for receiving, controlling and forwarding stock items fleet-wide. It helps easily transport stock from the ship to the warehouse and transfer from warehouse to warehouse. The system features a calendar that shows all transfer activity and a transaction display with transaction details. It can help consolidate different types of articles into one dispatch/shipment. Its functions have options for receiving and transferring material from the warehouse. Warehousing helps you to manage lot and serial numbers, and can consolidate shipments into containers. The Warehouse Management has also an own Period handling for proper consolidation of Receivings, Transfers, Correction within the Warehouse.

RECIPE MANAGER

Oracle Hospitality Cruise Recipe Manager makes it possible to create and store recipes. Recipes contain pictures and preparation instructions to ensure company standards are met fleetwide. Stock will always be up to date as cocktail ingredients are deducted as they are sold. A recipe for a “Bloody Mary” for example, can tell the system to deduct the bar stock quantity of alcohol and tomato juice necessary. The

system also provides daily menu engineering and planning capabilities to help best estimate costs.

CUSTOM QUERY

Oracle Hospitality Cruise Custom Query Module makes it possible for the Customer to create own Queries based on SQL. To get Data on a quick and easy way for Reporting. This can be then exported to Excel, Word or PDF.

CONNECT WITH US

Call +1.800.ORACLE1 or visit oracle.com/hospitality.
Outside North America, find your local office at oracle.com/contact.

 blogs.oracle.com/hospitality  facebook.com/OracleHospitality  twitter.com/oraclehosp

Copyright © 2020, Oracle and/or its affiliates. All rights reserved. This document is provided for information purposes only, and the contents hereof are subject to change without notice. This document is not warranted to be error-free, nor subject to any other warranties or conditions, whether expressed orally or implied in law, including implied warranties and conditions of merchantability or fitness for a particular purpose. We specifically disclaim any liability with respect to this document, and no contractual obligations are formed either directly or indirectly by this document. This document may not be reproduced or transmitted in any form or by any means, electronic or mechanical, for any purpose, without our prior written permission.

Oracle and Java are registered trademarks of Oracle and/or its affiliates. Other names may be trademarks of their respective owners.

Intel and Intel Xeon are trademarks or registered trademarks of Intel Corporation. All SPARC trademarks are used under license and are trademarks or registered trademarks of SPARC International, Inc. AMD, Opteron, the AMD logo, and the AMD Opteron logo are trademarks or registered trademarks of Advanced Micro Devices. UNIX is a registered trademark of The Open Group. 0120

Disclaimer: This document is for informational purposes. It is not a commitment to deliver any material, code, or functionality, and should not be relied upon in making purchasing decisions. The development, release, timing, and pricing of any features or functionality described in this document may change and remains at the sole discretion of Oracle Corporation.

