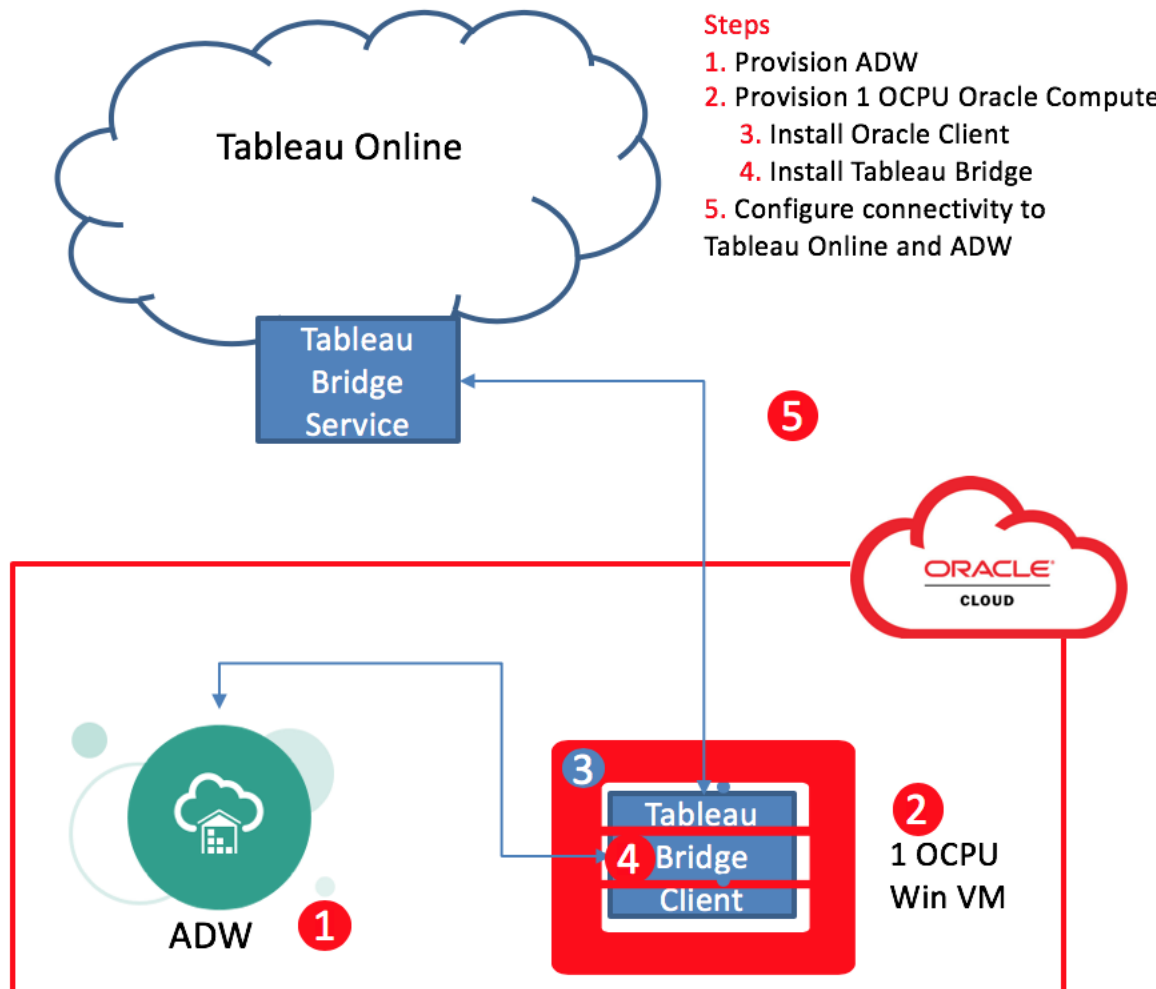


## Creating a connection from Tableau Online to Oracle Autonomous Data Warehouse

Oracle Autonomous Data Warehouse (ADW) is a fully managed cloud data warehouse. In order to connect to ADW, analytic tools need to use standard database drivers like JDBC, ODBC, or OCI (Oracle Call Interface). For security purposes, the connection will need to support Wallets and SSL encryption.

This document generally describes how to setup connectivity between Tableau Online and the Oracle Autonomous Data Warehouse. The Tableau Online architecture uses a Tableau Bridge Service and a corresponding Tableau Bridge Client software to connect to ADW.



<b>Certification Matrix</b>	<b>Version</b>
Tableau Online	Current version
Tableau Desktop	2018.1 (April 2018)
Tableau Server	2018.1 (April 2018)
Tableau Bridge	2019.1 (April 2019)
OCI Driver	Oracle Instant Client/Client version 12.1.0.2 and higher

### Step 1: Provision ADW

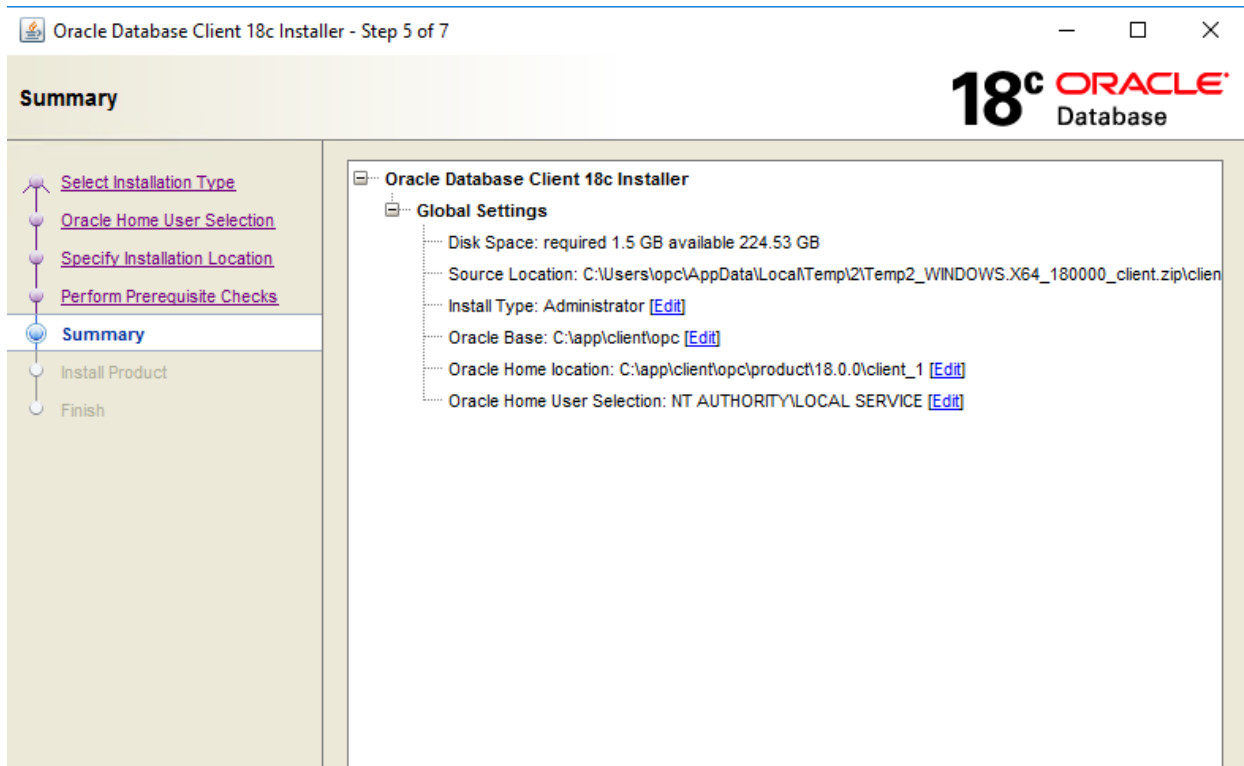
- Provision an Autonomous Data Warehouse instance in the Oracle Cloud. For the Oracle documentation to provision ADW please check [here](#).

### Step 2: Provision a 1 OCPU, of Oracle Compute Infrastructure

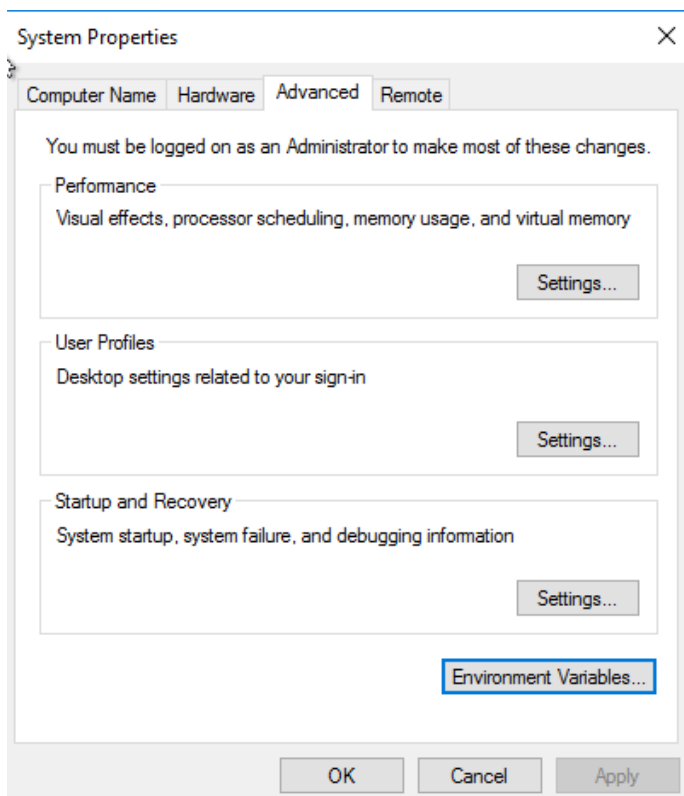
- To connect ADW to the Tableau Online, a Tableau Bridge software needs to be installed and configured on a 1 OCPU Oracle Compute Infrastructure. You will need to create a Windows Version x.x Virtual Machine. Please follow instructions from [Oracle Doc] to create this VM.

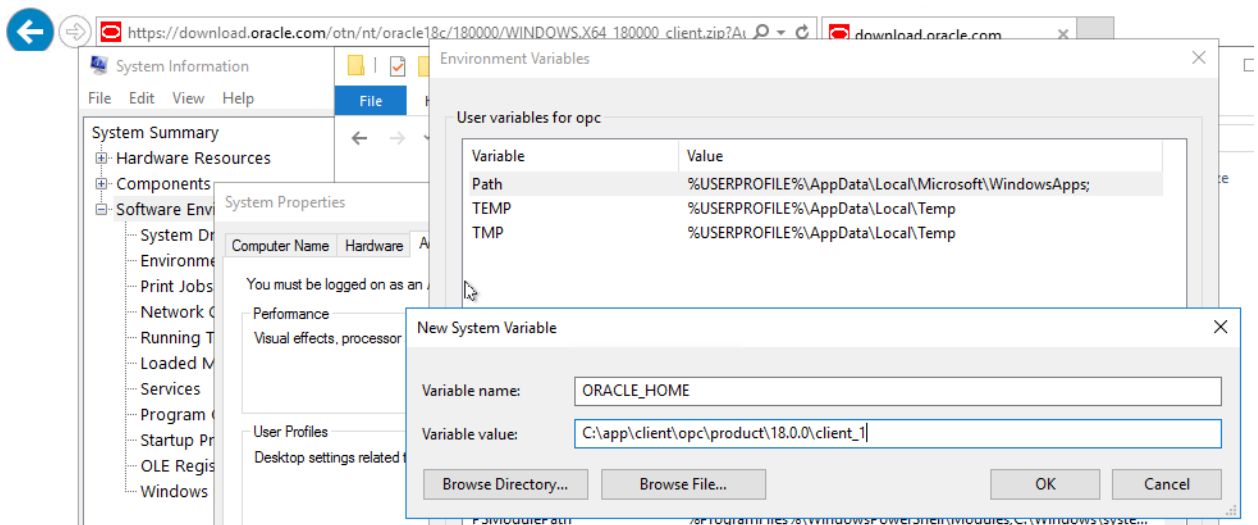
### Step 3: Install and configure the Oracle Database Client Library on the VM

- Before you install the Tableau Bridge Client on the VM that you just created. Make sure to install and configure the Oracle Client library. This will be required for the bridge to connect to ADW
- Download the Oracle [Instant/Full] Client Library from OTN. [Please add link], make sure you download version 12.1.0.2 and higher as indicated in the support matrix above.

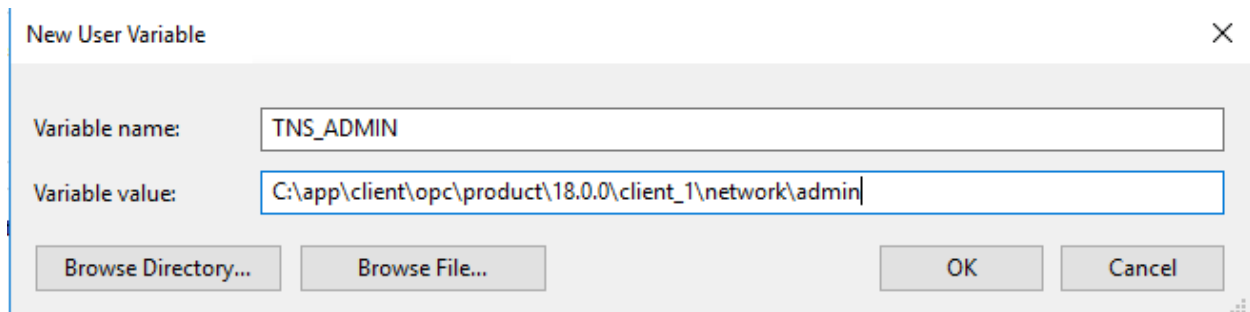


Once you have installed the Oracle client software, please set the environment variable ORACLE\_HOME





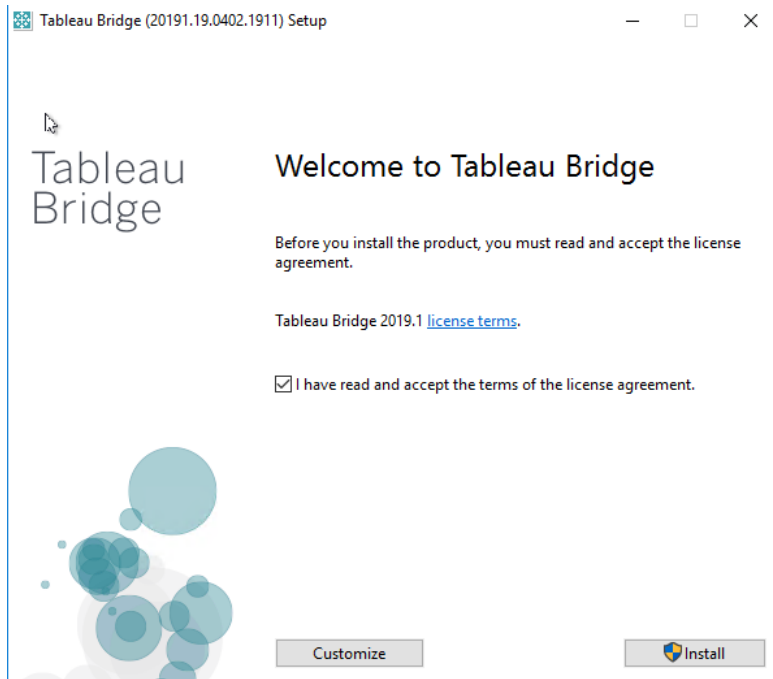
Set TNS\_ADMIN to directory where the wallet file is going to be unzipped. The default location is \$ORACLE\_HOME/network/admin



- Download the wallet into the TNS\_ADMIN directory using the instructions at [Downloading Client Credentials \(Wallets\)](#).

#### Step 4: Install and configure the Tableau Bridge Client on the VM

- Download the Tableau Bridge from the Tableau website [provide link] and install and configure it using the following steps:
  - a) Install Tableau Bridge Client



b) Start Tableau Bridge and log into your Tableau Online domain account.

Sign in to Tableau Bridge

×

A screenshot of the Tableau Online sign-in page. The page title is "Sign in to Tableau Online". The Tableau logo is at the top. Below the logo, there is a text input field containing the email address "vijay.balebail@oracle.com". Below that is a password input field with masked characters. There are two checkboxes: "Remember me" (unchecked) and "Forgot password" (checked). At the bottom is a dark blue button labeled "Sign In →".

c) A screen will pop-up and show all the data sources that are available. These data sources are generally published from the Tableau Desktop to Tableau Online using the optional steps detailed in the section below. [Hyperlink to Step 5] The bridge will now download all the data source configurations. Depending on if the data source is in Live or Extract mode, the bridge will push data from ADW to Tableau Online.

Tableau Bridge - VJ-Tableau

Status:  Connected 

vijaybai 

[TABLEAU\\_LIVETAB \(ADMIN\)](#)

Live

[WORKSHOP\\_LIVE \(ADMIN\)](#)

Live

[WORKSHOP\\_LIVE2](#)

Live

[WORKSHOP\\_TAB \(ADMIN\) \(2\)](#)

Live

Mode:

- d) Switch from Application mode to service mode. This way, as long as the bridge Windows server is up and running, the Bridge software will continue running.

Tableau Bridge - VJ-Tableau

Status:  Connected 

vijaybai 

Tableau Bridge client

Switching to Service mode runs live query and scheduled refresh activities as long as the computer is on, whether you're logged on to this computer or not.

OK

Cancel

Mode:



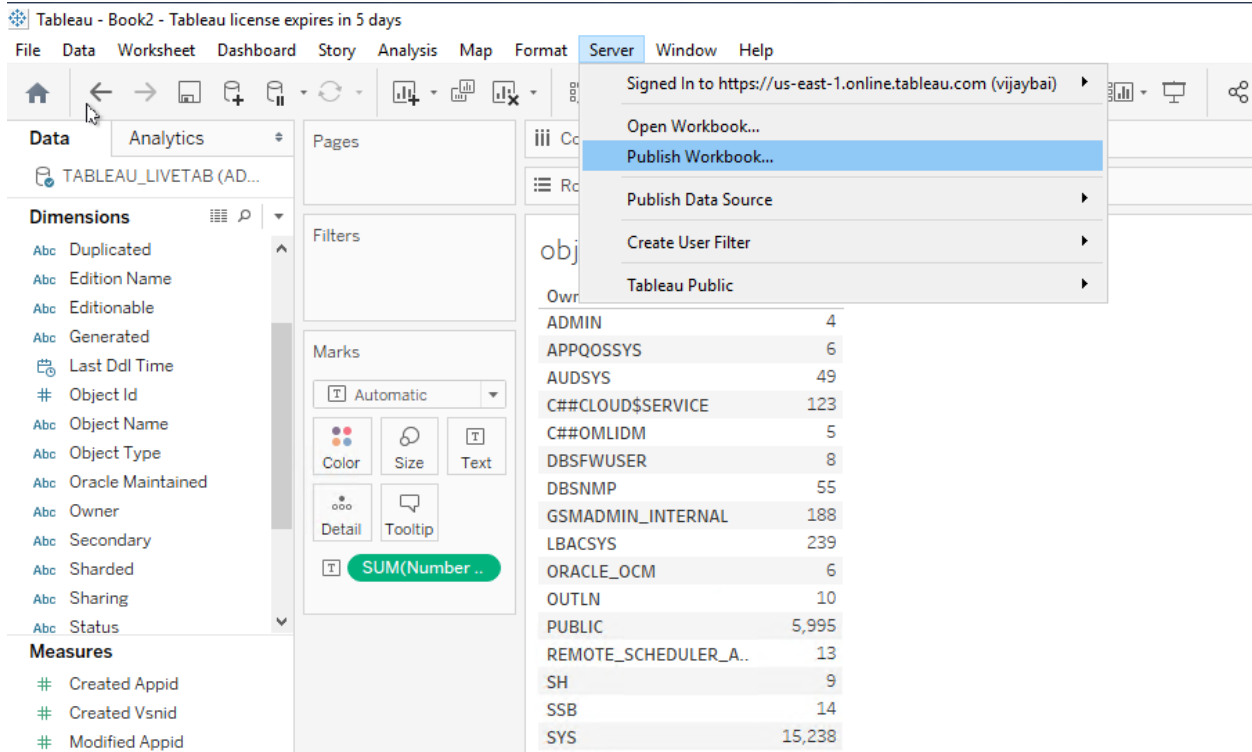
To finish switching to Service mode, you must log on to Windows as a local administrator.

## Step 5: (Optional) Develop dashboards on Tableau Desktop and Publish to Tableau Online

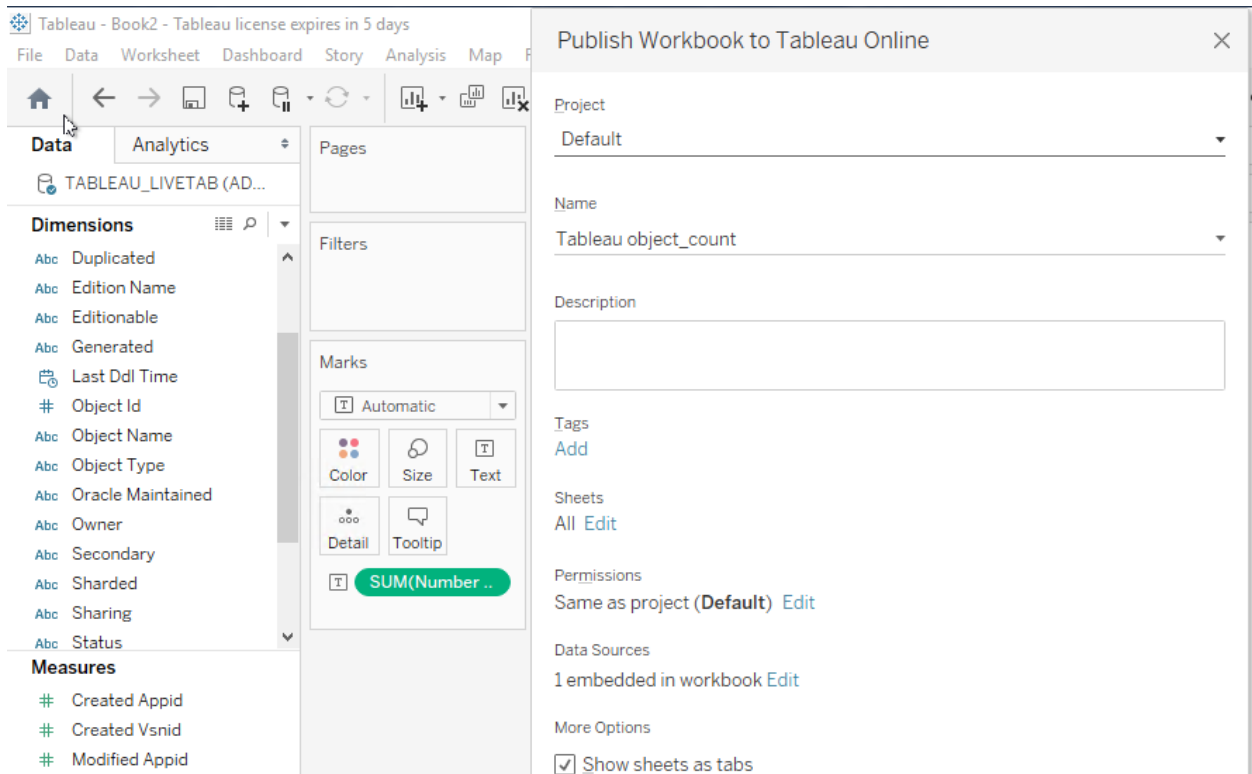
This document is focused on connecting Tableau Online to ADW using the Tableau Bridge. However, if you are also interested in establishing connectivity between a Tableau Desktop and ADW, please refer to the following document. [Add link to Oracle website].

From Tableau Desktop server, publish the Data Source and Workbooks to Tableau Online by signing in with the Domain account.

### Publish Workbooks



Choose a name for your Published workbook.





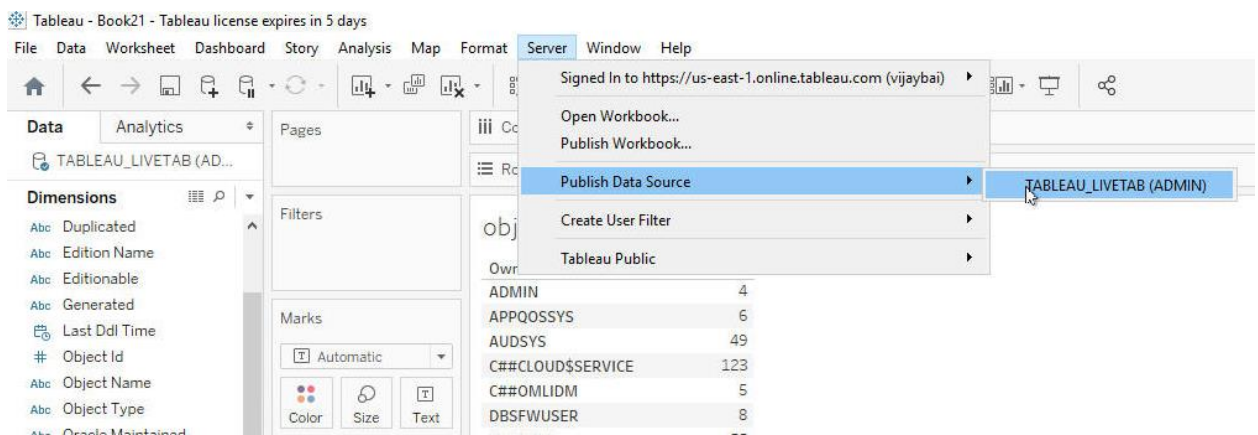
Click **Publish**

The Workbook is now published online. You will need to publish the Data sources as well to Tableau Online so that the information can be pushed to the Bridge server.

The screenshot shows the Tableau Online interface. The browser address bar displays the URL: [https://us-east-1.online.tableau.com/#/site/vijaybai/views/Tableauobject\\_count/Sheet1?iid=1](https://us-east-1.online.tableau.com/#/site/vijaybai/views/Tableauobject_count/Sheet1?iid=1). The navigation bar includes 'Content', 'Users', 'Groups', 'Schedules', 'Tasks', 'Status', and 'Settings'. The breadcrumb trail is 'Explore / default / Tableau object\_count / Sheet 1'. The main content area displays a table titled 'object count by owner'.

Owner	
ADMIN	4
APPQOSSYS	6
AUDSYS	49
C##CLOUD\$SERVICE	123
C##OMLIDM	5
DBSFWUSER	8
DBSNMP	55
GSMADMIN_INTERNAL	188
LBACSYS	239
ORACLE_OCM	6
OUTLN	10
PUBLIC	5,995
REMOTE_SCHEDULER_A..	13
SH	9
SSB	14
SYS	15,238
SYSTEM	466
XDB	39

## Publish the Data Source



## Choose Live connection

Publish Data Source to Tableau Online ×

Project  
Default

---

Name  
TABLEAU\_LIVETAB (ADMIN)

---

Description

Tags  
[Add](#)

Permissions  
Same as project (**Default**) [Edit](#)

Authentication  
None [Edit](#)

Tableau Bridge required for on-premises data

Create an extract and schedule a refresh

Maintain connection to a live data source

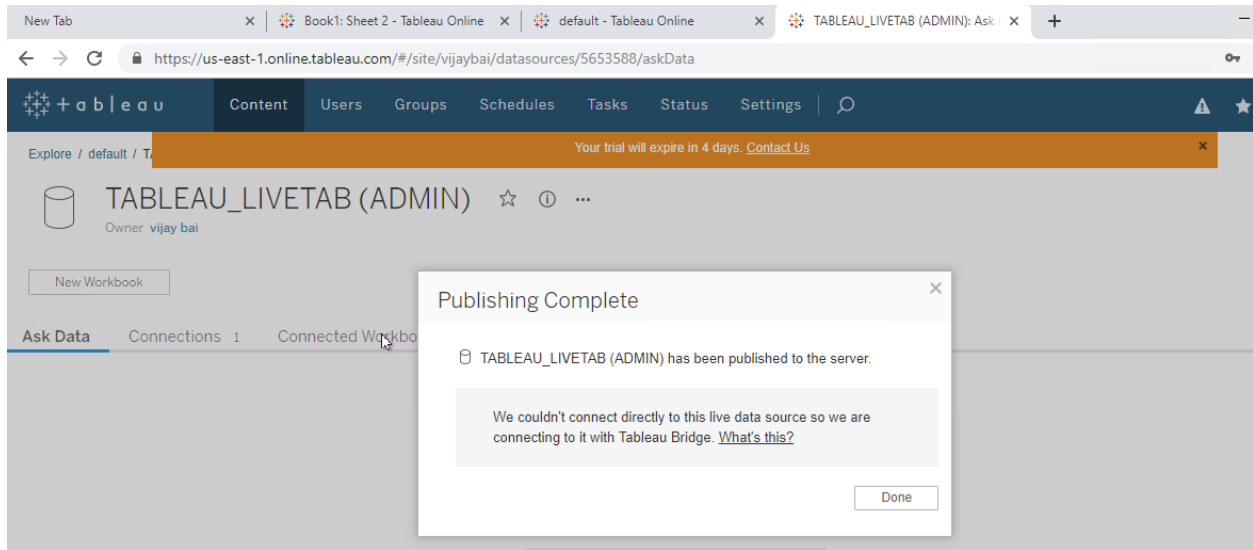
[Learn more](#)

More Options

Update workbook to use the published data source

Click [Publish](#)

In the online browser, you will see this published.



Once you have published the Data sources and workbooks to Tableau Online you will be able to see the data sources on Tableau Bridge.