

## IBM DataStage - Connecting to Oracle Autonomous Data Warehouse using Progress DataDirect ODBC driver

Oracle Autonomous Data Warehouse (ADW) supports connections from standard drivers including JDBC, ODBC, and ADO.NET. Analytic tools may use 3rd party drivers from providers such as Data Direct. In order to work with ADW, the driver must support Oracle Wallets and SSL encryption. Not all analytic tools package the latest driver versions, so you may be required to update the driver to the latest versions before you can successfully connect.

This document describes how to generally setup and configure Data Direct ODBC driver (Data Direct Oracle Wire Protocol), for tool vendors using this provider such as IBM DataStage. Please check the analytic tool documentation in case they have specific connectivity interfaces.

Connector Vendor	Version
<ul style="list-style-type: none"><li>Progress DataDirect</li></ul>	DataDirect 8.0 (v8.00.02.2091 Oracle Wire Protocol). Use DataDirect ODBC Driver set branded on or after 18 <sup>th</sup> July, 2018.

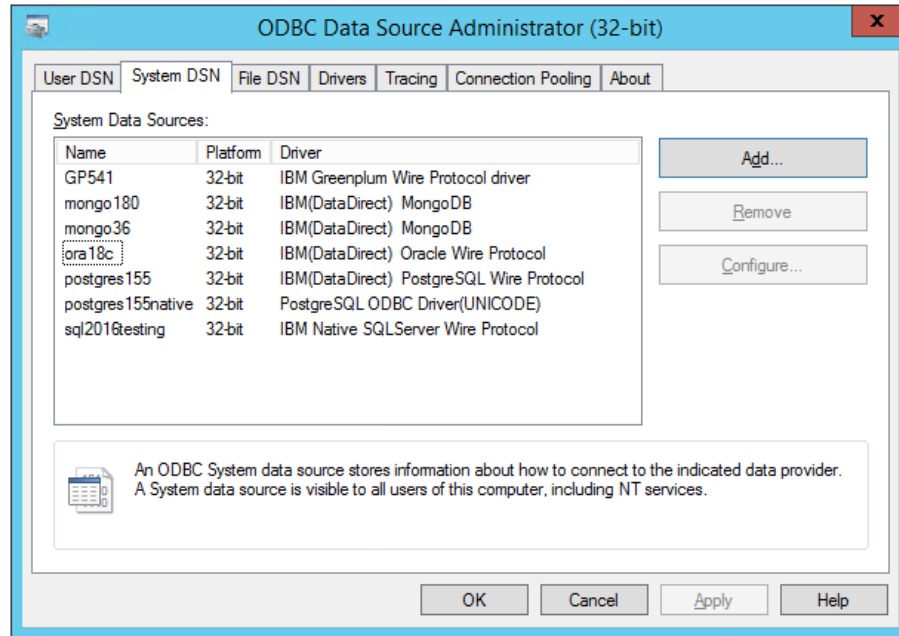
### DataDirect Oracle Wire Configuration:

1. Download the credentials file from the ADW administration console and unzip the file. The location of this files directory will now be referred to as the *'wallet\_directory'*. Oracle credentials file is a zipped file that contains all the wallet formats as well as a pre-defined tnsnames.ora and sqlnet.ora that will be required to make a tnsnames based connection. This credentials file is protected by a password based encryption. You will use this password later on during the driver configuration. It will be referred to as KeyStore/TrustStore password.
2. Please refer to the Progress DataDirect documentation [here](#) to install and configure the DataDirect Oracle Wire driver based on your OS. DataDirect Oracle Wire driver is available for Windows (32 bit/64 bit), Unix/Linux.

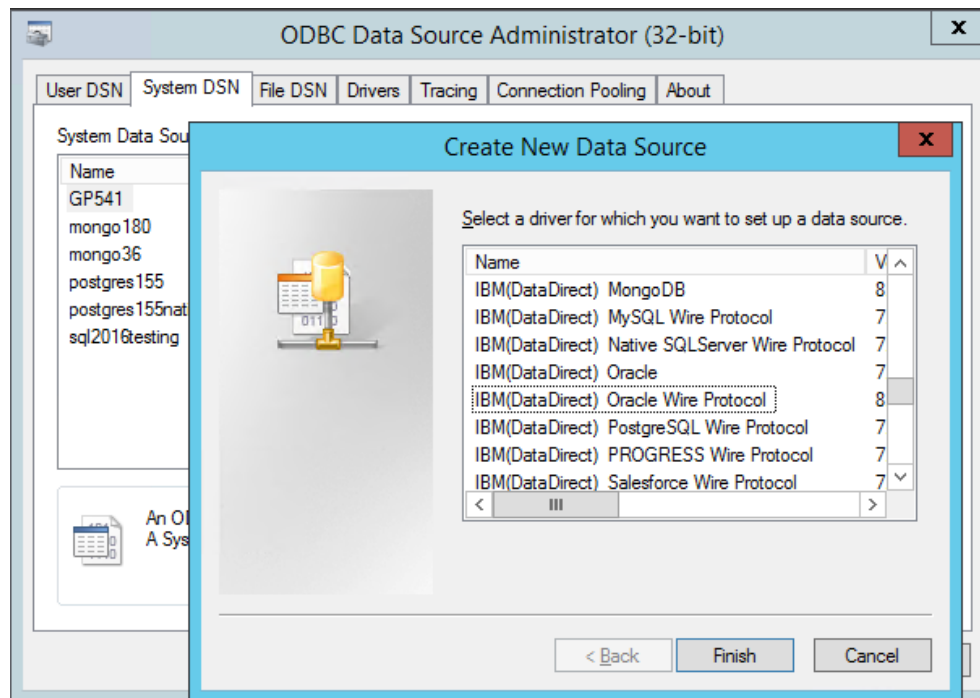
**NOTE:** Only the 32-bit version of the drivers is supported for DataStage on Windows.

3. Download the DataDirect ODBC Drivers. Once unzipped and installed, open the 32-bit ODBC Administrator on Windows to configure the system DSN.

# IBM DataStage - Connecting to Oracle Autonomous Data Warehouse using Progress DataDirect ODBC driver



4. Click on Add to configure a new system DSN under the System DSN tab. Locate the DataDirect 8.0 Oracle Wire Protocol from the list of drivers presented to you and press finish.



## IBM DataStage - Connecting to Oracle Autonomous Data Warehouse using Progress DataDirect ODBC driver

5. You will then be presented with a form for the DSN attributes. Fill in the DSN name, your TNS service name (this can be found in the tnsnames.ora file in TNS\_ADMIN location) and complete path to the tnsnames.ora (<wallet\_directory>\tnsnames.ora)

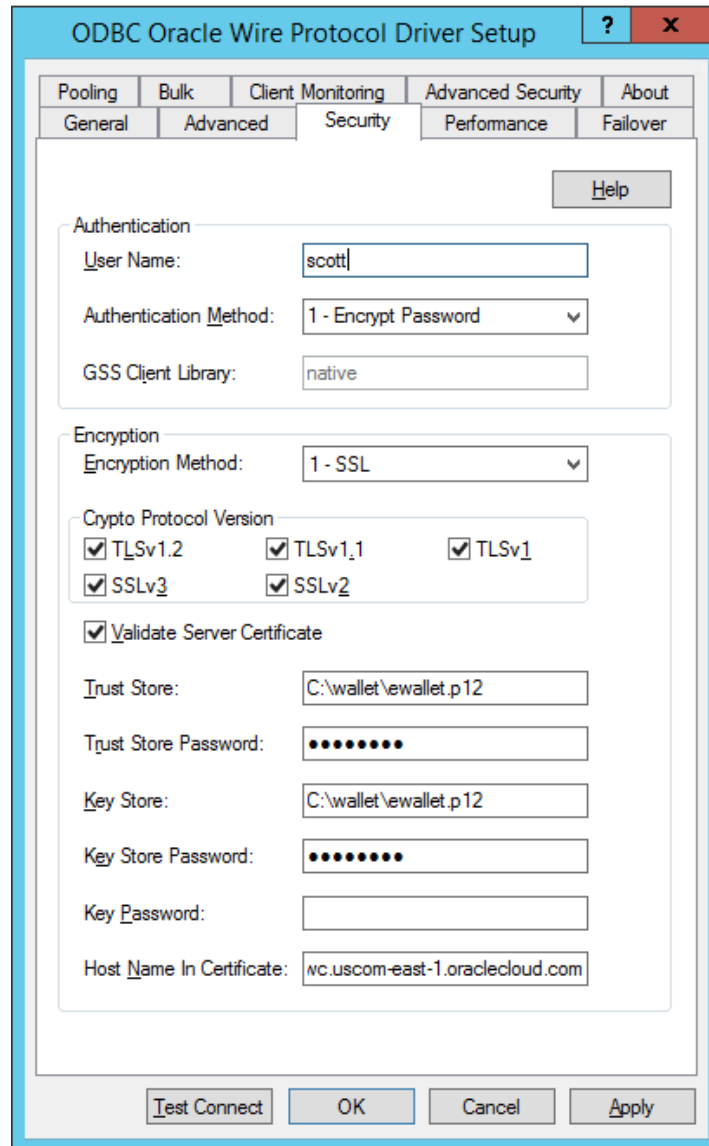
The screenshot shows the 'ODBC Oracle Wire Protocol Driver Setup' dialog box. The 'General' tab is active, displaying the following fields and options:

- Data Source Name:** ora18c
- Description:** (empty text box)
- Standard Connection:**
  - Host: (empty text box)
  - Port Number: (empty text box)
  - SID: (empty text box)
  - Service Name: (empty text box)
- TNSNames Connection:**
  - Server Name: ibmdstg\_high
  - TNSNames File: C:\wallet\tnsnames.ora
- Edition Name:** (empty text box)

At the bottom of the dialog, there are four buttons: 'Test Connect', 'OK', 'Cancel', and 'Apply'.

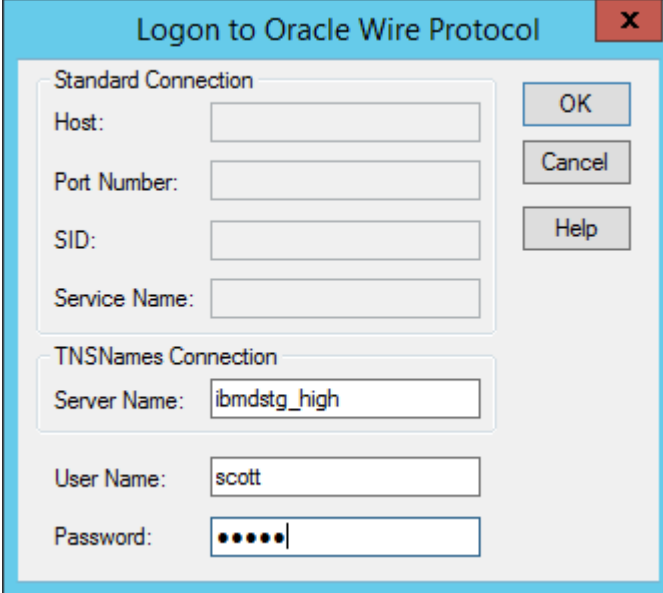
6. Next click on the Security tab and choose Encryption Method to be 1-SSL in the Encryption section. Also supply the path and name of the wallet to be used. Data Direct prefers the ewallet.p12 wallet file. The path should be <wallet\_directory>\ewallet.p12. Supply this information for both the Trust Store as well as the Key Store sections. The password to be supplied here is *the KeyStore/TrustStore password*. You may optionally supply the Database username in the Authentication section.

# IBM DataStage - Connecting to Oracle Autonomous Data Warehouse using Progress DataDirect ODBC driver

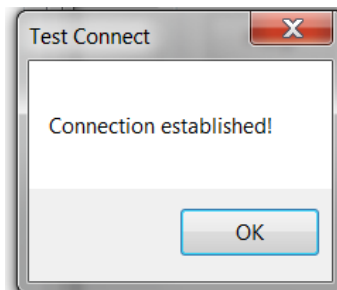


7. Test your connection by pressing the Test Connect button. Supply the database username and password to test the connection.

## IBM DataStage - Connecting to Oracle Autonomous Data Warehouse using Progress DataDirect ODBC driver



8. You should get a Connection Established message.



9. You are now ready to use this system DSN for your application!

**Note:** These instructions are for reference purposes only. As versions of this driver for latest details. Please refer to the vendor documentation on all the configuration options that are available for you to set.