

# Oracle Fleet Management Cloud

Oracle Fleet Management Cloud, the industry's first single-platform shipment-centric and asset-centric transportation management solution, allows you to manage your orders and shipments and determine the best way to fulfill them by utilizing internal capacity (private or dedicated fleet) or third-party capacity (external service provider rates and resources), as appropriate, all in one system. This approach eliminates the need to have multiple transportation systems consuming your single transportation budget.

## COMPLETE AND INTEGRATED FLEET MANAGEMENT

Oracle Transportation Management Cloud provides robust support for the entire transportation lifecycle. Oracle Fleet Management Cloud deepens these capabilities to include the management of fleet resources (driver, power, equipment) involved in fulfilling orders and shipments. This integrated approach to managing for-hire and owned assets will benefit shippers, who utilize a private or dedicated fleet, and logistics service providers, who utilize assets in providing service to their customers. With enhanced integration to Oracle Supply Chain Management Cloud and other ERP solutions, organizations can leverage Fleet Management capabilities in context of the broader supply chain to achieve end-to-end support for all aspects of fleet and asset management:

- Asset lifecycle management
- Driver hire, education, scheduling, and payroll
- Order capture and Customer Relationship Management
- Fleet planning – consolidation, fleet vs common-carrier trade-offs, multi-leg, multi-mode
- Dedicated fleet resource optimization and execution
- Driver and equipment assignment, and utilization
- Asset tracking
- Asset inventory management at asset pool locations
- Driver dispatch, mobile communications, tracking
- Costing – fleet, external service providers, special services, accessorials
- Payables – driver pay, independent contractors and external service providers
- Billables – bill customers for service, asset usage
- Cost accruals and revenue recognition
- Damages, claims and dispute management

### Key Features

- Enhance service through fleet-specific order management capabilities
- Fleet-specific planning and optimization
- Driver and equipment assignment
- Dispatch, mobile communications and asset tracking
- Measure and control financial performance by leveraging capabilities for costing, payables, billables, cost accruals, revenue recognition and claim and dispute management

## SINGLE PLATFORM SOLUTION FOR CONTRACT AND PRIVATE TRANSPORTATION

Current fleet management solutions typically provide a stand-alone system that is solely focused on managing and utilizing fleet assets, and only provide visibility to orders and shipments that are pre-determined as those traveling on fleet resources. This leads to under-utilization of fleet resources and unnecessary empty runs as well as a lack of cost considerations when fleets are underutilized or over extended. Lack of visibility to the broader order pool leads to missed backhaul opportunities and, potentially, incorrect deployment of the fleet.

These solutions do not provide the capability to account for common-carrier rates and capacity. This makes it difficult to determine how best to deploy fleet assets since there is no visibility to which orders can be advantageously serviced via third-party capacity and which ones are best deployed against the fleet. When order changes or execution-time issues impair the fleet's ability to service the order, it is a challenge to secure external capacity in the reduced lead time left to service the order.

In today's extended supply chain with orders sourced globally, with long lead times and high operational variability, it is vital to have an integrated environment that provides complete visibility and coordination to all modes and types of fulfillment capacity. Oracle Fleet Management Cloud provides the ability to manage all your orders and shipments in one system that considers all available fulfillment capabilities – internal and external.

### Key Business Benefits

- Reduced transportation and logistics costs
- Gain insight into fleet operations
- Improve asset utilization, tracking and lifecycle management
- Boost driver satisfaction and retention through increased utilization while accounting for driver-specific dispatch requirements
- Reduce fuel costs and emissions, leading to greater sustainability
- Ensure overall safety and visibility within the transportation value chain

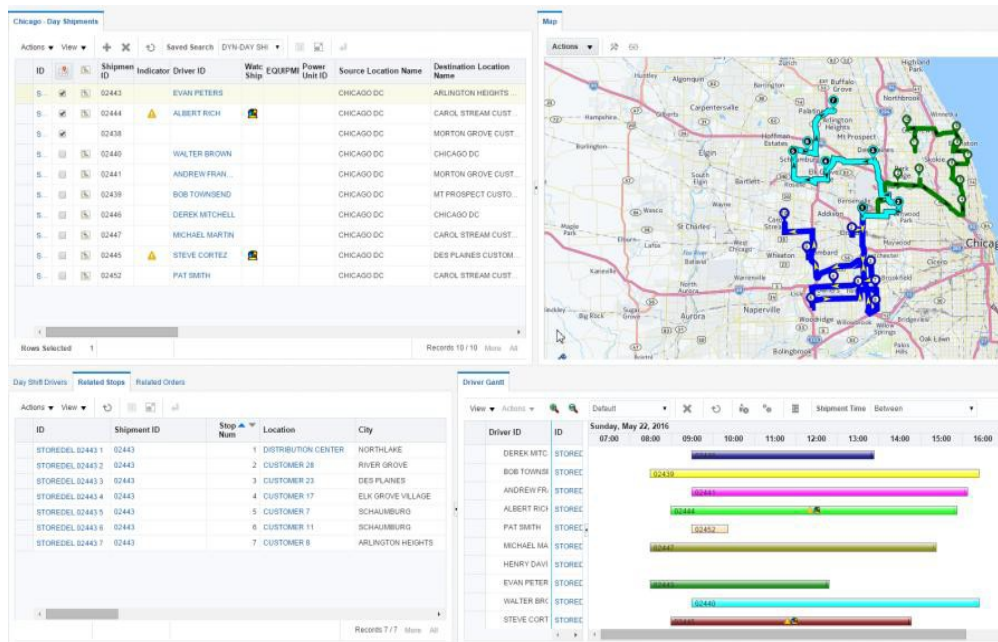


Figure 1: Oracle Fleet Management Cloud Workbench provides driver, equipment, and shipment management capabilities, including drag and drop actions.

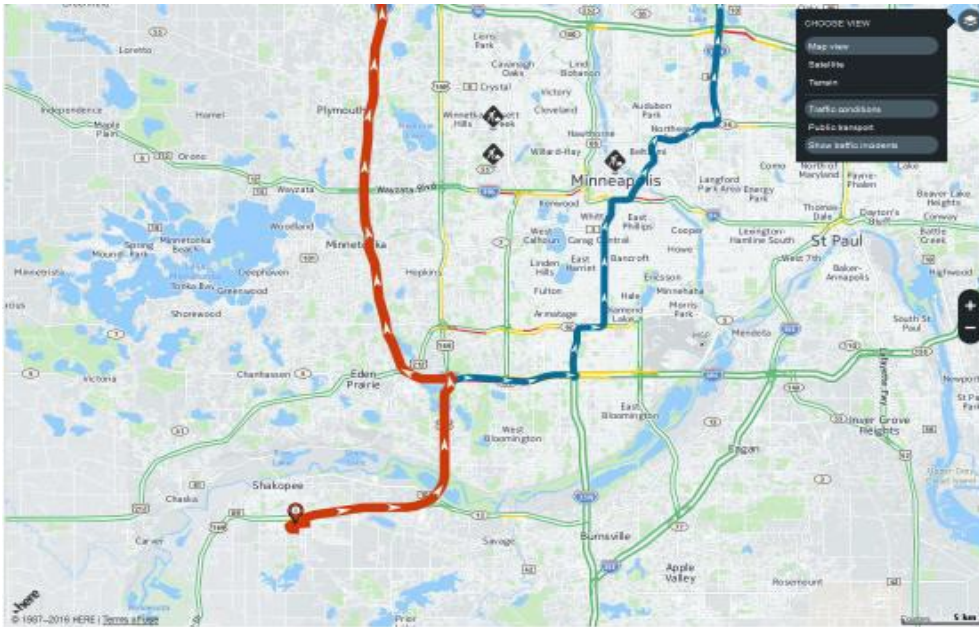


Figure 2: Oracle Fleet Management Cloud also provides street-level route considerations, with the option to display real-time traffic, traffic incidents, and weather.

## FLEET SPECIFIC OPTIMIZATION

Whether you have a private or dedicated fleet, in order to fully utilize its capabilities, it is critical to consider the state of the assets (availability, driver shifts, location, etc.) when planning work to utilize them. Oracle Fleet Management Cloud incorporates the current state of the fleet in the planning and optimization process to ensure that fleet resources are full utilized along with consideration of external carrier capabilities. Specialized support is provided for dedicated fleet where driver assignment is not an issue, but utilizing the dedicated asset to its utmost is critical. Many-to-many optimization of drivers and equipment takes into consideration detailed hours of service constraints, home location, driver region, asset location, status, and inventory positions. Decision support includes easy to configure, multi-pane screens that provide key data elements across multiple entities and visualization of resource availability and location via real-time, street-level maps and Gantt charts with drag-drop capabilities.

### Related Data Sheets

Oracle Fleet Management Cloud is part of Oracle Transportation Management Cloud and the Oracle suite of Logistics Cloud solutions. Related data sheets include:

- Oracle Transportation Management Cloud
- Oracle Transportation Operational Planning Cloud
- Oracle Logistics Network Modeling Cloud
- Transportation Sourcing
- Freight Payment, Billing, and Claims
- Transportation Intelligence
- Transportation Cooperative Routing
- Oracle Global Trade Management Cloud

## CONNECT WITH US

Call +1.800.ORACLE1 or visit [oracle.com](http://oracle.com).

Outside North America, find your local office at [oracle.com/contact](http://oracle.com/contact).

 [blogs.oracle.com](http://blogs.oracle.com)

 [facebook.com/oracle](https://facebook.com/oracle)

 [twitter.com/oracle](https://twitter.com/oracle)

Copyright © 2020, Oracle and/or its affiliates. All rights reserved. This document is provided for information purposes only, and the contents hereof are subject to change without notice. This document is not warranted to be error-free, nor subject to any other warranties or conditions, whether expressed orally or implied in law, including implied warranties and conditions of merchantability or fitness for a particular purpose. We specifically disclaim any liability with respect to this document, and no contractual obligations are formed either directly or indirectly by this document. This document may not be reproduced or transmitted in any form or by any means, electronic or mechanical, for any purpose, without our prior written permission.

This device has not been authorized as required by the rules of the Federal Communications Commission. This device is not, and may not be, offered for sale or lease, or sold or leased, until authorization is obtained.

Oracle and Java are registered trademarks of Oracle and/or its affiliates. Other names may be trademarks of their respective owners.

Intel and Intel Xeon are trademarks or registered trademarks of Intel Corporation. All SPARC trademarks are used under license and are trademarks or registered trademarks of SPARC International, Inc. AMD, Opteron, the AMD logo, and the AMD Opteron logo are trademarks or registered trademarks of Advanced Micro Devices. UNIX is a registered trademark of The Open Group. 0320

**Disclaimer:** This document is for informational purposes. It is not a commitment to deliver any material, code, or functionality, and should not be relied upon in making purchasing decisions. The development, release, timing, and pricing of any features or functionality described in this document may change and remains at the sole discretion of Oracle Corporation.

