

How the Oracle Smart Construction Platform helps owners plan, build, and operate assets

Connect teams. Empower decision-making. Synchronize project delivery.

The Oracle Smart Construction Platform gives owners the tools to manage cost, schedule, scope, and risk across the asset lifecycle. It's designed to help you maximize the value of your capital programs, increase visibility into your construction projects, and begin operations on time and within budget. Here are the three ways the platform helps manage every phase of the asset lifecycle.

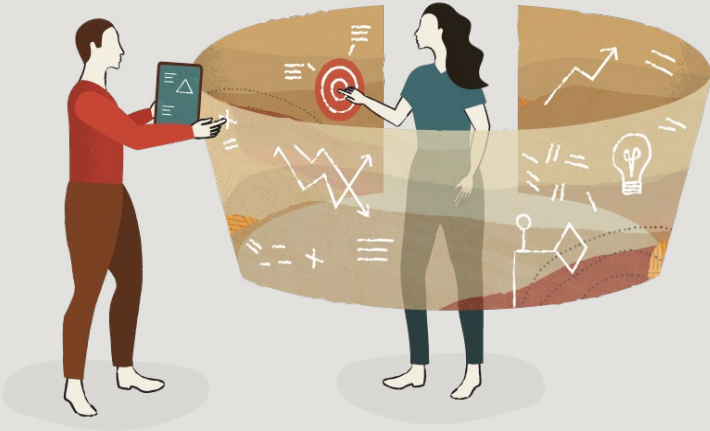
1. Connect teams, processes, and data to manage the big picture

- Increase visibility, coordination, and control across capital program management activities
- Select and prioritize projects that align with your organizational strategy and goals
- Keep projects on track with visibility into cost, schedule, and risk information at the project, program, and portfolio levels
- Build a comprehensive project record to help manage your completed asset



2. Learn from yesterday, understand today, improve tomorrow

- Empower teams to make proactive, more informed decisions with predictive intelligence and deep analytics
- Unlock data from proprietary formats and applications to provide project- and portfolio-wide visibility
- Mitigate risks with tools to predict problems and sharpen decision-making
- Measure and report on forecasts vs. actuals, schedule timelines, risk, and other KPIs.
- Apply learnings to drive continuous improvement across your capital programs



3. Keep project planning and execution teams in sync

- Make everything run smoothly from ideation to handover
- Bring together planners and project managers and equip them to readily adjust to changes and make the right decisions for the organization
- Drive collaboration and manage all information in a common data environment
- Standardize and automate processes to improve coordination, control, and compliance across teams



[Click here to learn more about the Oracle Smart Construction Platform](#)

