



Oracle Insurance Insbridge Enterprise Rating

Accurate rates mean getting the right products to the right people at the right time. With Oracle Insurance Insbridge Enterprise Rating—the adaptive, centralized rating solution for product management and premium calculation—you can more quickly react to market changes and effectively manage the policy lifecycle.

May, 2020
Copyright © 2020, Oracle and/or its affiliates
Confidential – Public

TABLE OF CONTENTS

Conquer Rating Complexity with a Simple, Single System	3
Easy-to-Use System Empowers Business Users	3
Rapid Response to Market Changes	3
Enhanced Regulatory Compliance	3
Extensible Rating Content	3
State-of-the-Art Rating, Rules, and Underwriting	4
Oracle Insurance Insbridge Enterprise Rating SoftRater engine	4
Oracle Insurance Insbridge Enterprise Rating RateManager	4
Oracle Insurance Insbridge Enterprise Rating Impact Analysis	5
Transforming the Insurance Enterprise	6
Related products	6

LIST OF IMAGES

Image Caption 1: Oracle Insurance Insbridge Enterprise Rating's Web 2.0-enabled home screen promotes collaboration and productivity	4
---	---



CONQUER RATING COMPLEXITY WITH A SIMPLE, SINGLE SYSTEM

With Oracle Insurance Insbridge Enterprise Rating, you can augment your legacy systems and centralize rating to a single system. Additionally, because it is Web-based and uses XML and Web services, the Oracle Insurance Insbridge is flexible and scalable to change and grow with your business with proven run-time and design-time integrations.

EASY-TO-USE SYSTEM EMPOWERS BUSINESS USERS

Oracle Insurance Insbridge Enterprise Rating is a simple, fast, and accurate rating system designed for business users. Oracle Insurance Insbridge delivers the following benefits:

Rapid Response to Market Changes

- Actuaries, product managers, underwriters, and business analysts alike can create, test and deploy complex rating, rules and underwriting logic without programming expertise, speeding time to market of rate changes and new products
- Impact analysis tool shows effect of potential rate changes on book of business
- Fast and precise rules engine reduces underwriting leakage, allowing carriers to automate underwriting decisions

Enhanced Regulatory Compliance

- Versioning allows more flexibility in your business by facilitating the management of multiple product versions supporting various channels, effective dates, or other criteria
- Ability to respond timely to Legislature changes or rate needs
- Fully self-documenting for complete auditability of a rate changes and system modifications
- Extensive pre-built reports such as “Where Used” and “Dependency” reports provide transparency into rating methodologies and processes

Extensible Rating Content

- SOA and Web Services integrations with existing technology, such as policy administration systems, Web portals, and CRM systems, to effectively harness the full value of technology investments
- Supports all major operating systems and databases to fit within existing technology infrastructure
- Third-party callouts validate data and provide seamless and accurate rate processing

Key Features

- Improved rating accuracy and reduced risk with a single, centralized rating engine
- Flexible, scalable architecture enables launch and distribution of new products, lines of business, and states
- Multi-platform rating and rules engine
- Versioning allows more flexibility by facilitating the management of multiple product versions supporting various channels, effective dates, or other criteria
- Supports rate table import from all major data stores
- Codeless user interface
- Auditability and reports support governance and regulatory compliance
- Rating worksheet provides a detailed view of the premium calculations

STATE-OF-THE-ART RATING, RULES, AND UNDERWRITING

Oracle Insurance Inbridge Enterprise Rating augments your current infrastructure by providing state-of-the-art rating with minimal programmer intervention. Some of the key features of Oracle Insurance Inbridge include:

Oracle Insurance Inbridge Enterprise Rating SoftRater engine

The Oracle Insurance Inbridge multiplatform rating and rules engine provides:

- Capacity to process millions of transactions per hour
- Web services interface (WSI) driven by communication of data in XML format for seamless integrations
- Use of XML, supporting major data formats and custom data layouts.
- Support for all major operating systems
- Installations on Oracle and other major databases
- Integration with standard XML formats such as ACORD, or propriety formats

Oracle Insurance Inbridge Enterprise Rating RateManager

The Oracle Insurance Inbridge Enterprise Rating rules and rate creation solution:

- Manages all company-specific rates and rules (including underwriting rules, factors and formulas) related to premium quoting
- Functionality to make changes at nationwide level or state/territory levels
- Enhanced with Web 2.0-enabled, customizable home screen to quickly navigate recently used programs, tables and algorithms, as well as assess other user activity
- Includes security features allowing administrators to manage system rights for users and groups
- Supports statistical coding and form determination rules
- Rating worksheet provides a detailed view of the premium calculations
- “Reporting” database that provides customers access to rating content in a relational data structure and format

Key Benefits

- Reduces total cost of ownership by creating a single rating engine for a carrier and lowering resource and operational expenses
- Enhances distribution management by easily integrating with other systems and enabling straight-through processing, ultimately improving service with channels
- Improves risk management through multivariate pricing and rate analysis capabilities, creating more competitive products and broadening the book of business
- Fast, precise rules engine allows carriers to automate underwriting decisions
- Clear visibility into the rating process for more effective risk management and revenue optimization

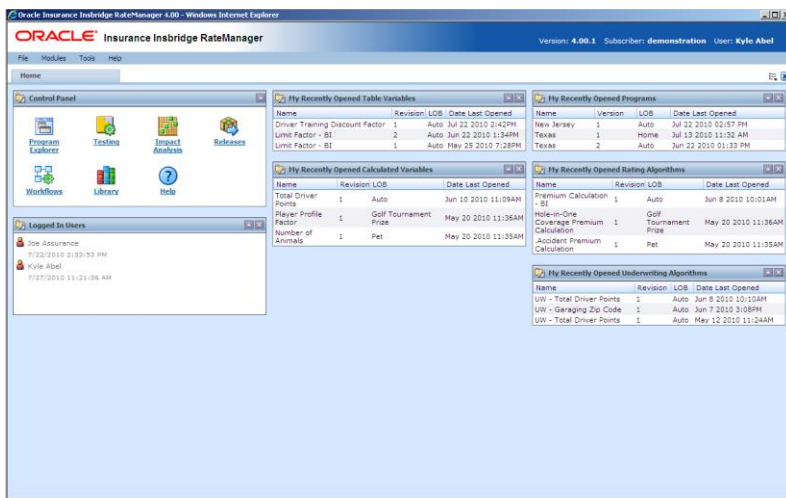


Image Caption 1: Oracle Insurance Inbridge Enterprise Rating's Web 2.0-enabled home screen promotes collaboration and productivity

Oracle Insurance Insbridge Enterprise Rating Impact Analysis

Rating/underwriting and actuarial/predictive analytics are at the center of many of the initiatives being pursued by insurance carriers to capture opportunities, enhance financial performance, respond to increased regulation and mitigate risk. The Oracle Insurance Insbridge Impact Analysis solution:

- Enables users to test the impact of “what if” scenarios on their book of business before it’s launched in the production environment
- Reduces chance for errors and significantly increases the likelihood that a rate or rule change will have the desired effect
- Enables users to export the impact analysis result to an excel file that can be filtered, formatted and easily searched for better analysis.
- Provides impact analysis report with charts to make it easier for the user to compare the results.

TRANSFORMING THE INSURANCE ENTERPRISE

Oracle believes that insurers should be able to leverage their technology to help transform their business. Oracle Insurance provides adaptive, rules-driven systems that let insurance companies easily change business processes as their business needs change. These position insurers to readily respond to dynamic market conditions and take advantage of new opportunities as they arise.

RELATED PRODUCTS

- Oracle Documaker
- Oracle Insurance Data Capture
- Oracle Policy Automation
- Oracle Siebel for Insurance
- Oracle CRM On Demand for Insurance

Summary

Oracle Insurance Insbridge Enterprise Rating is a Web-based rating, rules, and underwriting system for all lines of business. It allows users to create, deploy and manage complex rates with a single, secure, and flexible rating engine - speeding time to market and reducing the time spent on maintaining rates.

CONNECT WITH US

Call +1.800.ORACLE1 or visit oracle.com.
Outside North America, find your local office at oracle.com/contact.

 blogs.oracle.com

 facebook.com/oracle

 twitter.com/oracle

Copyright © 2020, Oracle and/or its affiliates. All rights reserved. This document is provided for information purposes only, and the contents hereof are subject to change without notice. This document is not warranted to be error-free, nor subject to any other warranties or conditions, whether expressed orally or implied in law, including implied warranties and conditions of merchantability or fitness for a particular purpose. We specifically disclaim any liability with respect to this document, and no contractual obligations are formed either directly or indirectly by this document. This document may not be reproduced or transmitted in any form or by any means, electronic or mechanical, for any purpose, without our prior written permission.

Oracle and Java are registered trademarks of Oracle and/or its affiliates. Other names may be trademarks of their respective owners.

Intel and Intel Xeon are trademarks or registered trademarks of Intel Corporation. All SPARC trademarks are used under license and are trademarks or registered trademarks of SPARC International, Inc. AMD, Opteron, the AMD logo, and the AMD Opteron logo are trademarks or registered trademarks of Advanced Micro Devices. UNIX is a registered trademark of The Open Group. 0520

