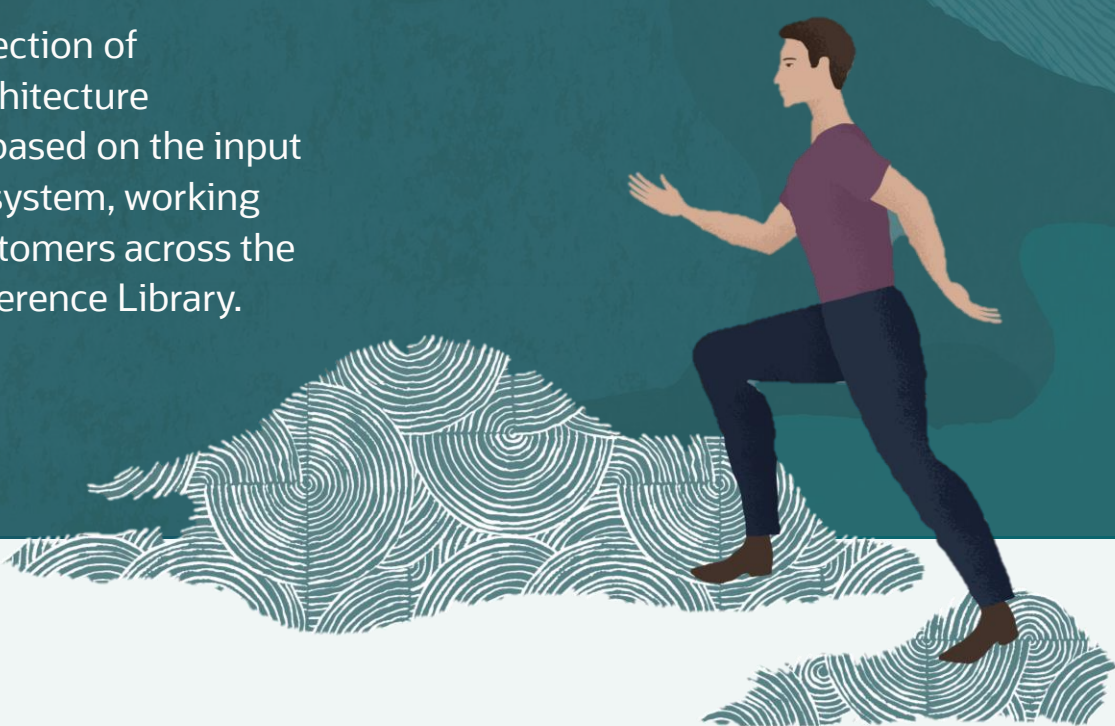


Retail Reference Library

Oracle Retail has created a collection of documented process flows, architecture diagrams and semantic terms based on the input and experience across the ecosystem, working with a broad range of retail customers across the globe into the Oracle Retail Reference Library.



Accelerate your retail software projects

Oracle Retail Reference Library provides a collection of detailed implementation information deriving out of projects developed around the world to help your team implement retail solutions faster and more efficiently.

For retailers, by retailers

Equation



more than
5,000
Retail customers



12,500
Business partners



96
Countries



The business value:

- **Accelerate** implementations
- **Derive maximum value** from our software and development investment
- Help IT and business users **better collaborate**
- **Invest in your future** with best of breed solutions at an enterprise scale



Oracle Retail solutions

are detailed in the Retail Reference Library

The latest release of the Retail Reference Library contains valuable information by component supporting Cloud Service and on-premise application deployments:

More than

Retail Reference Models
650
process flows

Retail Reference Architecture
7,500
artifacts*

Retail Semantic Glossary
1,100
terms

* RRL statistic includes 1300 diagrams, views and links to Oracle Retail documentation posted on docs.oracle.com and in [Oracle Support](#).

Only Oracle Retail provides



Breadth and depth of enterprise level context models.



Depth of detail with context and logical architecture models.



Documented retail experience across the enterprise suite of solutions.

Learn more



retailprocess_ww@oracle.com



See how [John Lewis](#) quickly realized RRL value

Best practices built inside, **free gift** with purchase of any retail license.

