



ORACLE

Oracle Fusion ERP Analytics

Packaged Analytics for Oracle Cloud ERP

[Learn More](#)






ORACLE

Overview

Key Features

Use Cases

More Information

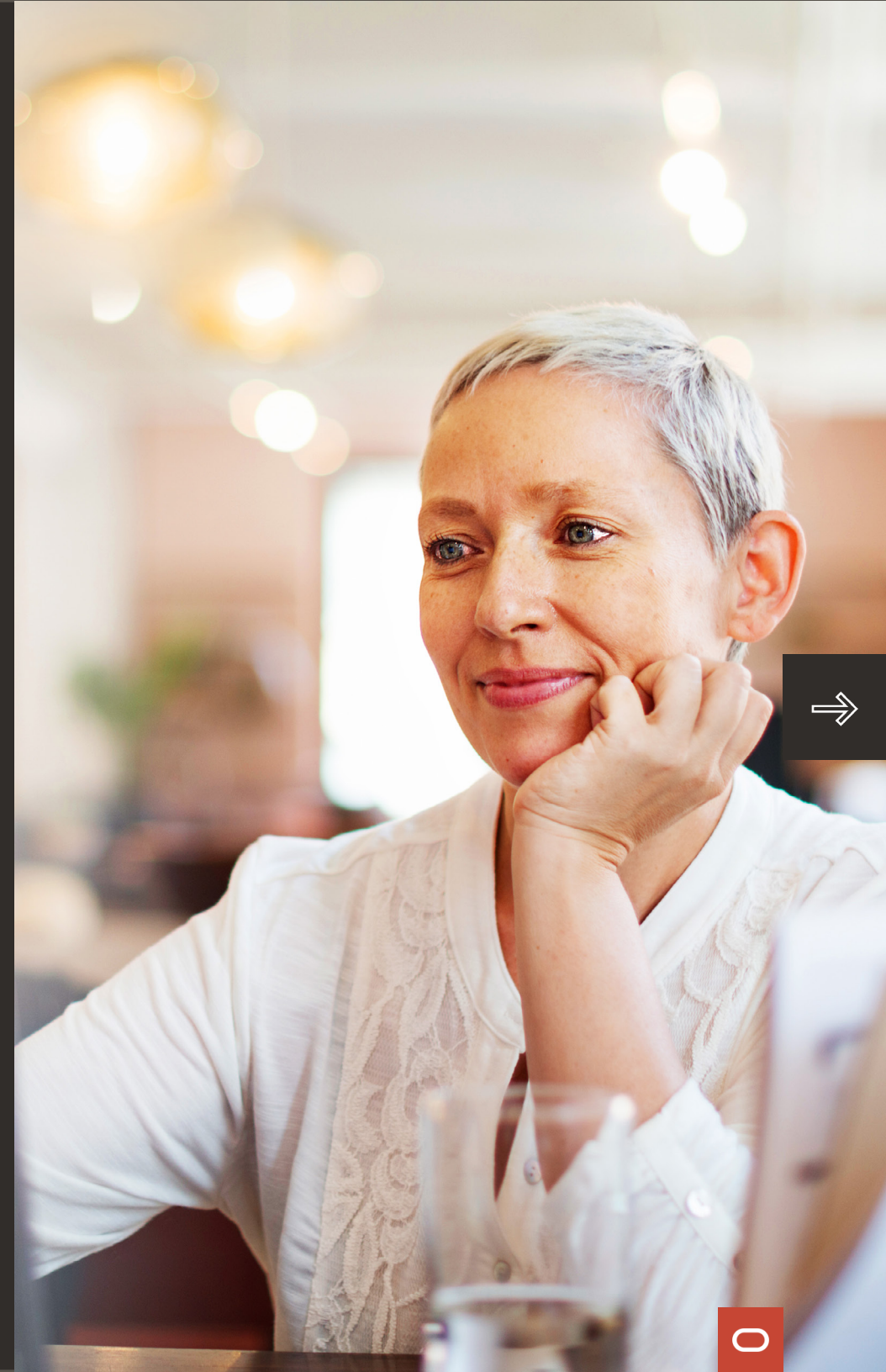


Gain richer insights into your Oracle Cloud ERP data using pre-built KPIs and dashboards powered by machine learning. Connect the dots between Oracle Cloud Applications and third-party data sources with Oracle Analytics. And easily monitor business performance with improved visibility across the company.

Make informed decisions.

Oracle Fusion ERP Analytics is designed from the ground up to unlock the value of data with powerful, pre-built, and extensible capabilities that unlock the value of Oracle Cloud ERP. It provides more in-depth visibility into the factors that impact revenue, costs, and profitability with analysis of historical and forward-looking trends.

Leverage enhanced visibility and collaboration to make more informed decisions. Oracle Fusion ERP Analytics maximizes the value of Oracle Cloud ERP with fast implementation and accessible analytics to reduce costs, increase revenue, and improve profitability. In addition, Oracle Fusion ERP Analytics enables collaboration across organizational groups to create better business partnerships between lines of business as well as improved agility and visibility.



Take proactive action.

Finance executives, managers, and front-line employees can access a variety of cross-domain data and predictive analytics to understand the root causes of variances and spot trends. With insights from Oracle Fusion ERP Analytics, teams can more quickly identify opportunities and take corrective actions to improve financial performance.

Enhance business performance visibility

with access to current and accurate data from across the organization and external sources.

Access more accurate data

with daily updates that are automated and aligned with Oracle Cloud ERP.



Connect insights from across the company. Create sustainable competitive advantage.

Oracle Fusion ERP Analytics provides connected insights into all factors affecting financial performance, such as employee performance, supply chain operations, and customer satisfaction. With Oracle Fusion ERP Analytics, leaders have the information needed to make more informed decisions, based on coordinated cross-domain analyses, that drive growth and create a sustainable competitive advantage.

By bringing diverse data sources together with enhanced analytics, Oracle Fusion ERP Analytics delivers strategic intelligence rather than tactical analysis and monitoring. Extend analysis with the ability to easily access governed data then blend it with other data from across the company—without having to support business intelligence (BI) platforms or engage IT. Data from a variety of sources can be combined, analyzed, and securely shared from an easy-to-use dashboard.



Connect Disparate Data

Such as:

- Cloud applications from Oracle and other vendors
- Data in on-premise systems
- Third-party data

Increase agility. Drive growth.

Oracle Fusion ERP Analytics increases the agility of finance teams by providing ready access to data-driven insights and enhanced reporting that helps improve day-to-day operations as well as tackle more complex challenges, such as:

- Preserve cash
- Maintain liquidity
- Tightly manage expenses
- Identify cost-reduction opportunities
- Model financial scenarios



Executives

Enable faster opportunity and risk identification for strategic planning, as well as the ability to stay on top of any changes with KPIs and alerts available on mobile devices.

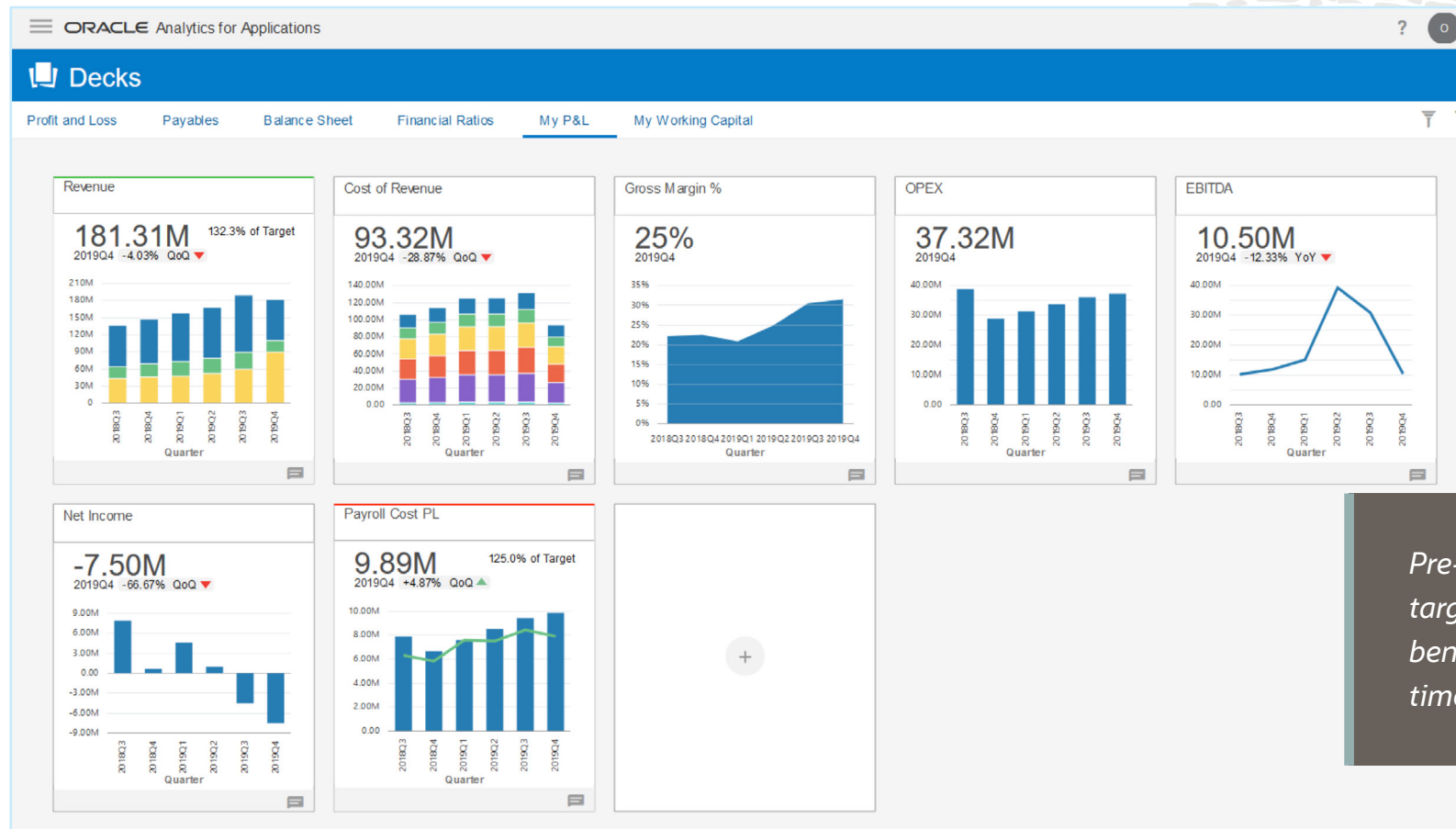


Analysts

Extend the value of Oracle Cloud ERP operational reporting with fast and easy access to evolving financial and non-financial information as well as more in-depth analysis and efficient monitoring.

Improve business performance monitoring with continuously updated data in pre-built KPIs.

Use more than 50 pre-built key performance indicators (KPIs) to track metrics based on priorities. Oracle Fusion ERP Analytics decks can easily be personalized to track specific views based on roles and responsibilities. And, with Oracle Fusion ERP Analytics, everyone on the team can create their own ad-hoc decks as well as define additional metrics, set alerts, collaborate with others, and benchmark performance against targets and prior performance.



Pre-built KPIs compare against targets such as budget or benchmarks, including previous time periods.

Overview

Key Features

Use Cases

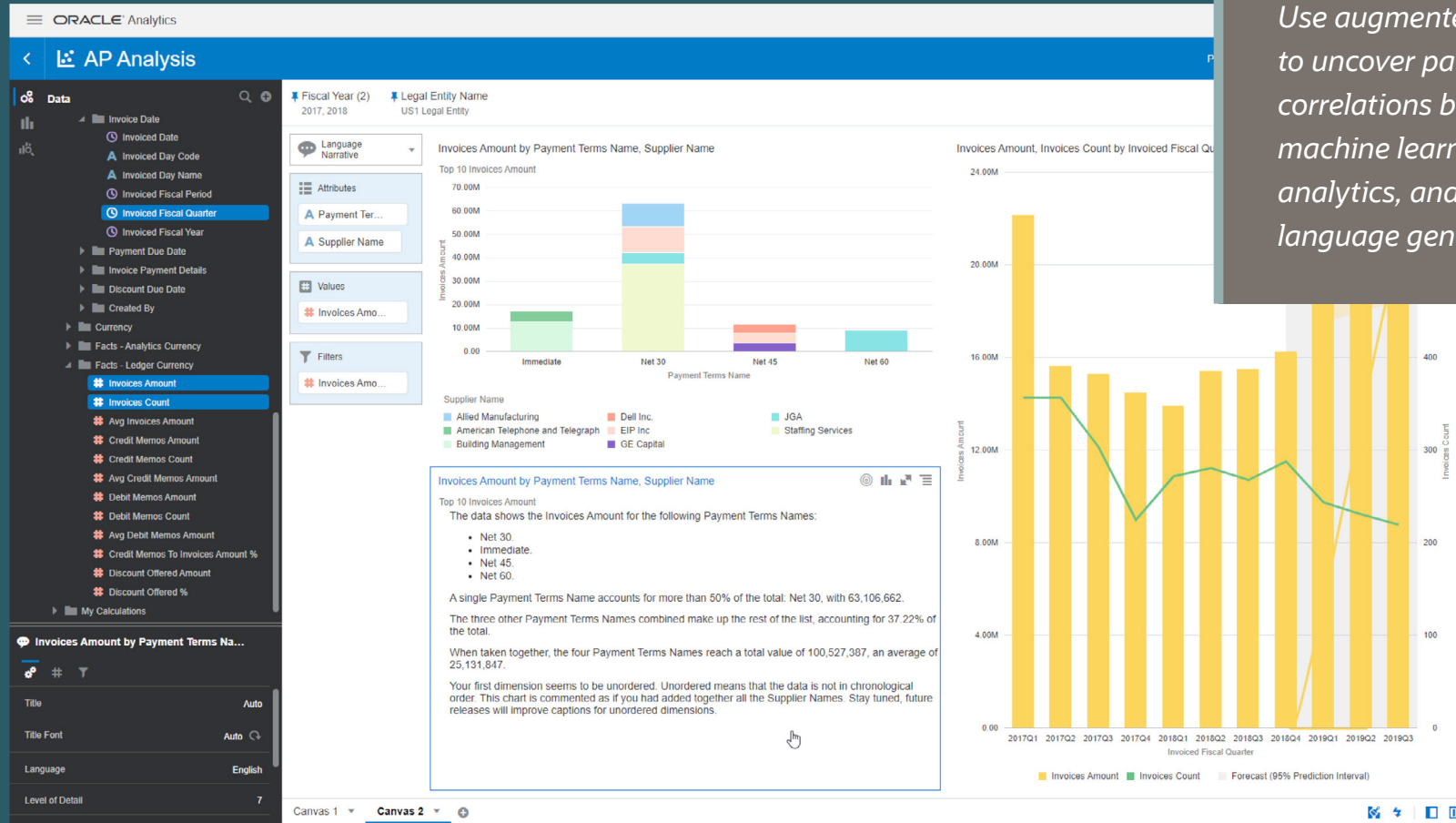
More Information

The screenshot shows the Oracle Analytics for Applications interface. The main dashboard displays three KPI cards: Revenue (181.31M, 132.3% of Target), Net Income (-7.50M, -66.67% of Target), and EBITDA (10.50M, -12.33% of Target). An 'Add Card' modal is open, showing a search bar and a list of KPIs including OPEX, OPEX PL, On Time Payment Performance %, Operating Expense Ratio (OER), Payables, Payroll Cost, Payroll Cost PL, Quick Ratio, Receivables, and Return on Assets. A preview of the 'Payroll Cost PL' card is shown, displaying a value of 9.89M (125.0% of Target) and a line chart for the 2019Q4 period.

Customize dashboards by adding pre-built KPI cards, with best practices metrics, to decks.

Leverage proven process metrics.

Access a comprehensive library of best practice KPI metrics that incorporate Oracle's extensive knowledge of business application data. Oracle Fusion ERP Analytics connects data across systems into one integrated view of performance. Choose from strategic, operational, and process metrics that have been proven over decades of experience.



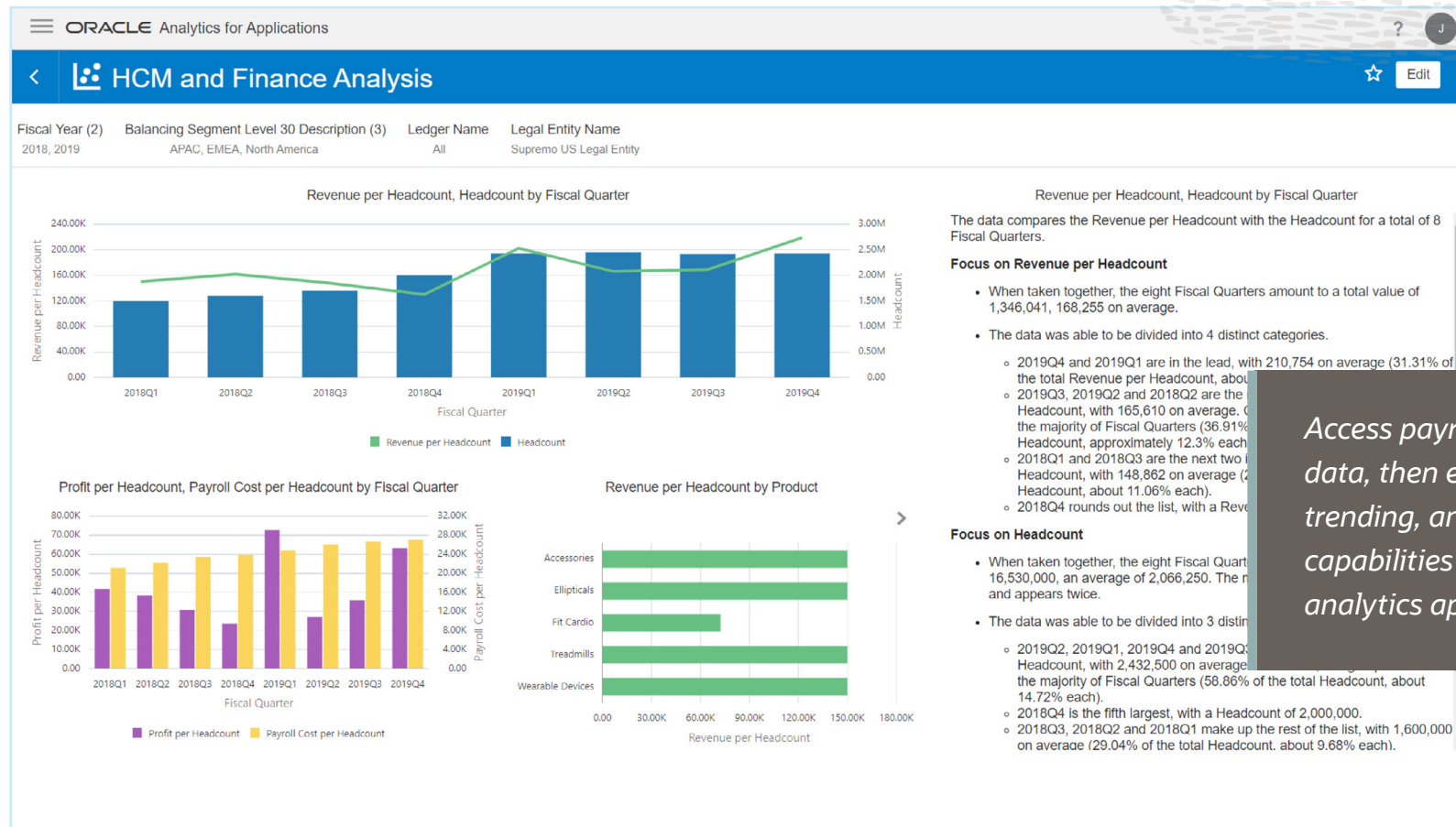
Use augmented analytics to uncover patterns and correlations by applying machine learning, predictive analytics, and natural language generation.

Accelerate time to richer insights.

Oracle Fusion ERP Analytics powers deeper insights with ML and AI included in all analytics. Smart data preparation and discovery speeds time to discover insights. Natural language processing (NLP) and natural language generation (NLG) power modern, conversation-style analytics.

Create connected intelligence with data from multiple sources.

Bring diverse data sources together quickly and easily to unlock strategic insights rather than tactical analysis with Oracle Fusion ERP Analytics. Enhanced data access and extended analysis allows leaders to make more informed decisions about how to grow revenue, decrease costs, and improve profitability.



Access payroll data as well as HR data, then embed forecasting, trending, and narrative generation capabilities with an extensible analytics application architecture.



Speed analysis and reporting.

Oracle Fusion ERP Analytics provides pre-built data models that go deep by topic area and broadly across ERP subjects to deliver a comprehensive view of your organizations' overall performance. This accelerates the delivery of operational analysis, such as balance sheet analysis, profitability analysis, and working capital analysis.

Overview

Key Features

Use Cases

More Information

The screenshot displays the Oracle Analytics interface for a 'Net Income Analysis' project. A modal window titled 'Add Data Set' is open, showing a grid of pre-built data models categorized under 'Subject Areas'. The models include:

- Common - Warehouse Refresh Statistics
- Financials - AP Aging
- Financials - AP Balances
- Financials - AP Expense
- Financials - AP Holds
- Financials - AP Invoices
- Financials - AP Liabilities
- Financials - AP Payments
- Financials - AR Adjustments
- Financials - AR Aging
- Financials - AR Balances
- Financials - AR Credit Memo Applications
- Financials - AR Receipts and Applications
- Financials - AR Transactions
- Financials - GL Balance Sheet
- Financials - GL Budgets
- Financials - GL Detail Transactions
- Financials - GL Profitability

The background shows a dashboard with a bar chart for 'Quarterly Return on Equity' and a table for 'Net Income for Current Quarter'.

Use pre-built analytic models to quickly create drag-and-drop visualizations.

Put capital to work.

Overview

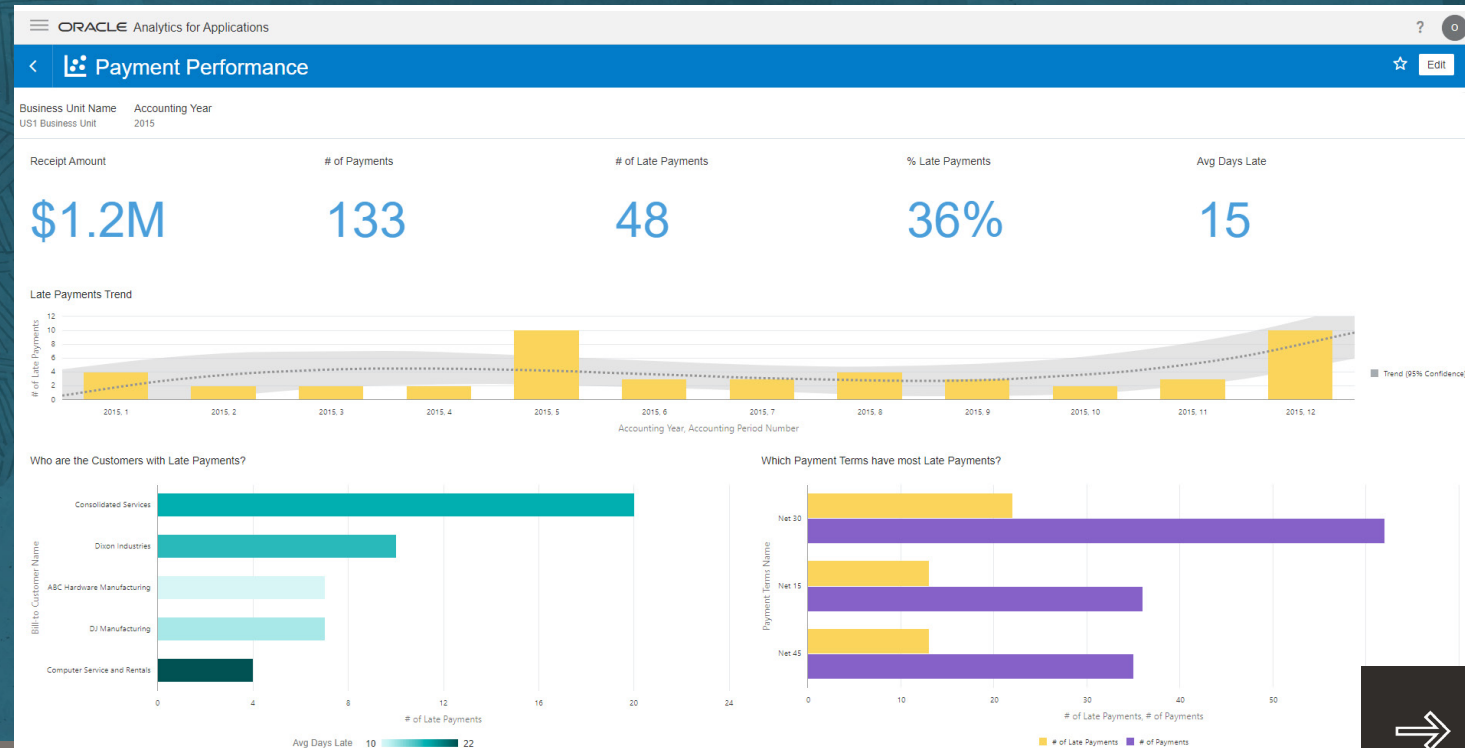
Key Features

Use Cases

More Information

Oracle Fusion ERP Analytics helps finance teams put capital to work efficiently and effectively by tracking daily changes to receivables, inventory, and payables.

Gain insight into customer payment patterns.



- Evaluate the operation's efficiency – order-to-cash and procure-to-pay processes
- Raise working capital visibility
- Optimize payment and customer terms
- Enable proactive collections
- Identify frequent default customers and enable corrective action

- Enhance analysis of Days Sales Outstanding (DSO), Days Inventory Outstanding (DIO), and Days Payables Outstanding (DPO)—historical trends, forecasting, and what-if
- Compare DSO, DIO, and DPO to industry benchmarks or targets

Uncover new ways to reduce costs.

Overview

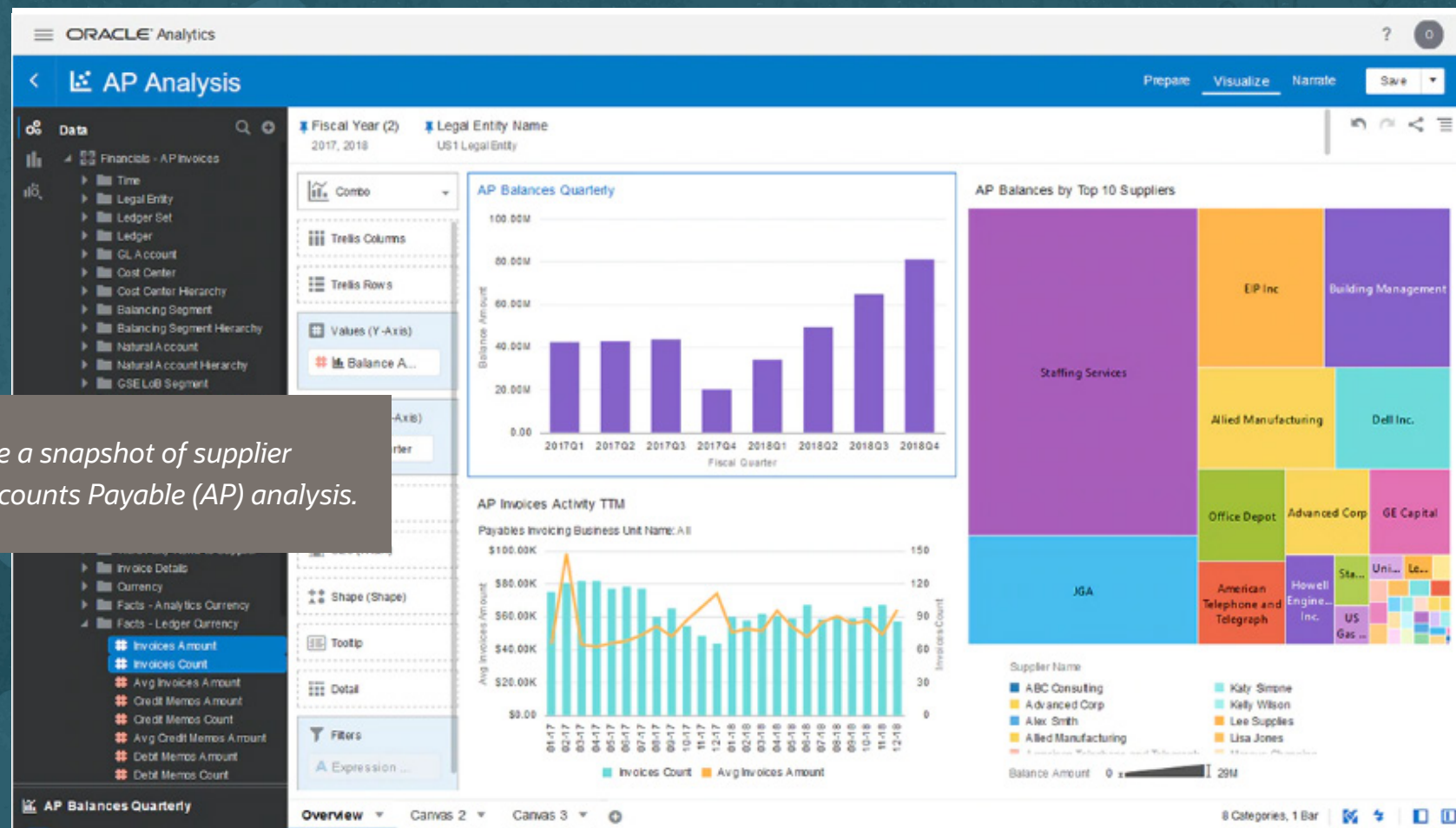
Key Features

Use Cases

More Information

With Oracle Fusion ERP Analytics, finance teams can find more ways to reduce costs.

- Increase spend visibility
- Find potential cost savings
- Investigate non-agreement spend
- Identify supplier consolidation opportunities and pricing inconsistencies
- Improve spend forecasting

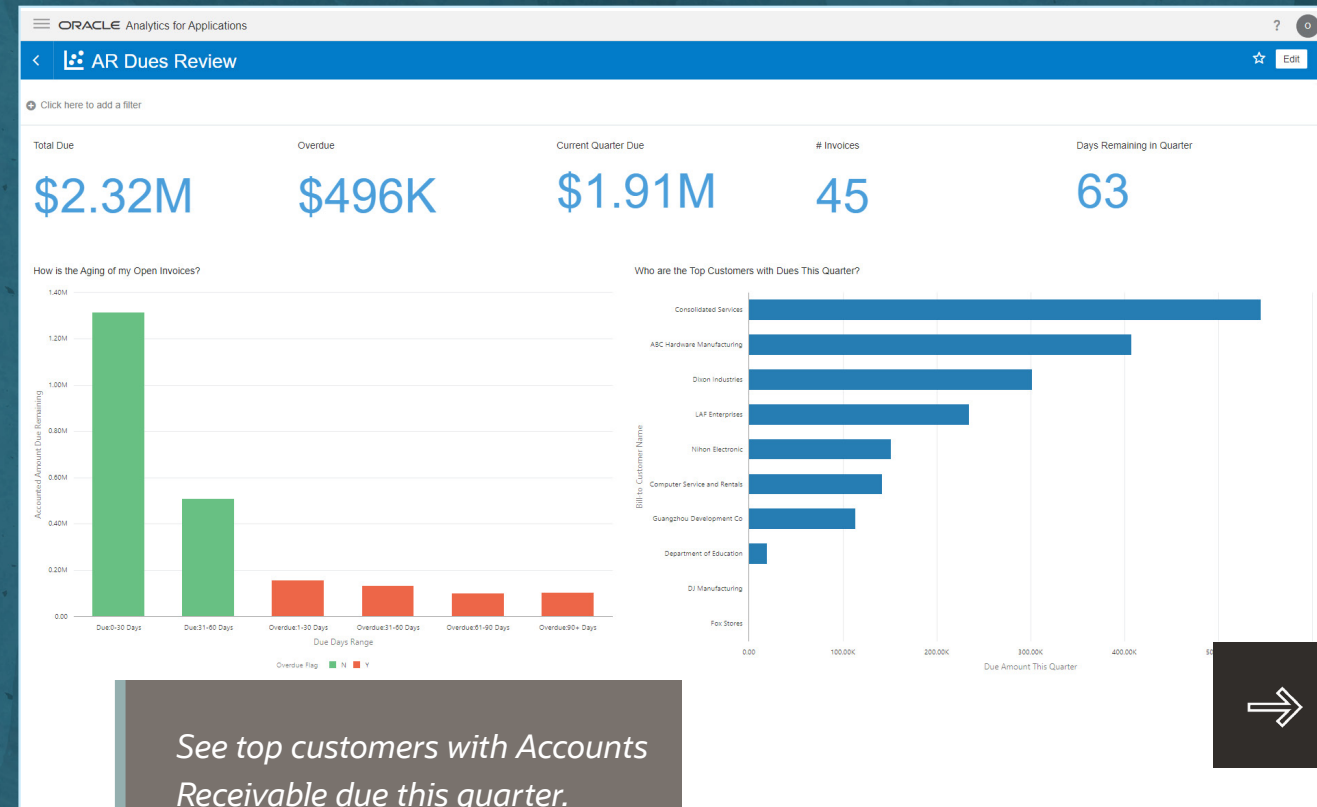


See a snapshot of supplier Accounts Payable (AP) analysis.



Enable deeper analysis of drivers that impact costs, revenue, and profitability.

Oracle Fusion ERP Analytics provides executives with enhanced data and insights to make strategic decisions.



- Simplify access to divisional or product-line reporting—profit and loss statements, actual vs. budget variance reports, and product or customer profitability reports
- Easily create and evaluate forward-looking scenarios
- Identify the most profitable customers
- Assess the profitability impact of weather events or transportation logistics
- Quickly see gross margins for various product lines—which product lines are growing, margins high runners, and products that provide for stable revenue run rate
- Compare performance margins with peers





Learn more about how Oracle Fusion ERP Analytics enhances the value of Oracle Cloud ERP.

Learn More

Common View of the Business



Rapid Return on Investment
FAST TIME TO VALUE

