

Creating a connection from SaCa DataViz to Oracle Autonomous Data Warehouse (ADW)

Cerification Matrix	Version
SaCa DataViz	V5.2.07 or above

Oracle Autonomous Data Warehouse (ADW) supports connections from standard drivers including JDBC, ODBC, and ADO.NET, and clients that use these compliant drivers. In order to work with ADW, the connector/driver must support Oracle Wallets and SSL encryption. This document describes how to setup and configure SaCa DataViz to connect to Oracle Autonomous Data Warehouse.

Prerequisites

To connect to Oracle Autonomous Data Warehouse and create a SaCa DataViz DataSet, you must have the following:

- Your Oracle username and password.
- The Credentials wallet for Oracle Autonomous Data Warehouse.
- The Java™ Platform, Standard Edition Development Kit (JDK) needs 1.8 or above.

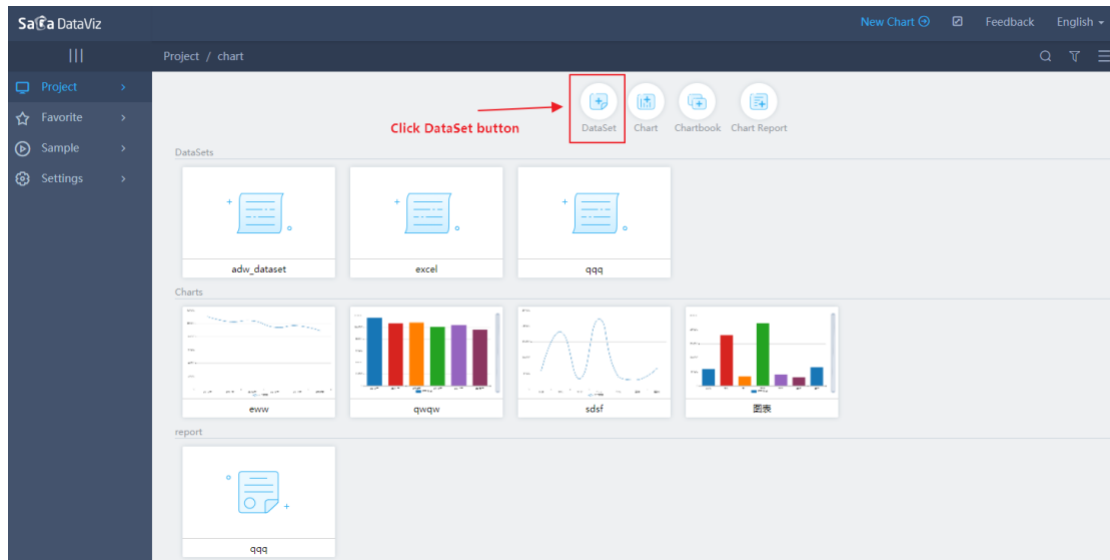
Steps

1) Download the credentials file from the ADW administration console by following the instructions outlined here. Keep the Credential wallet in its original format which is the Zip format.

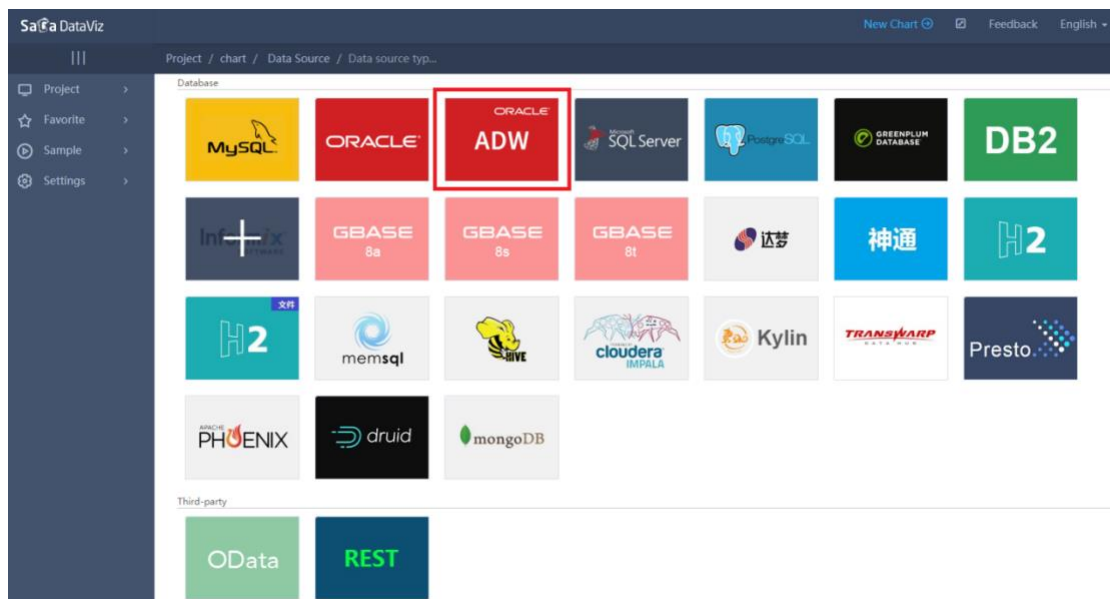
2) Log into SaCa DataViz Home Page. Click the Project button to create a new project.



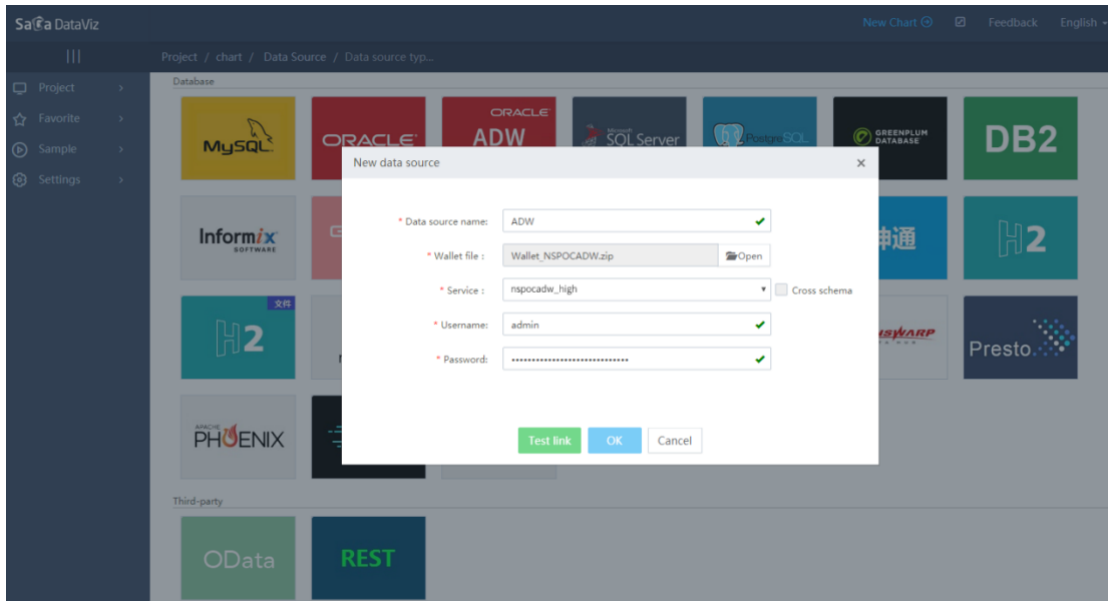
3) Click the DateSet button.



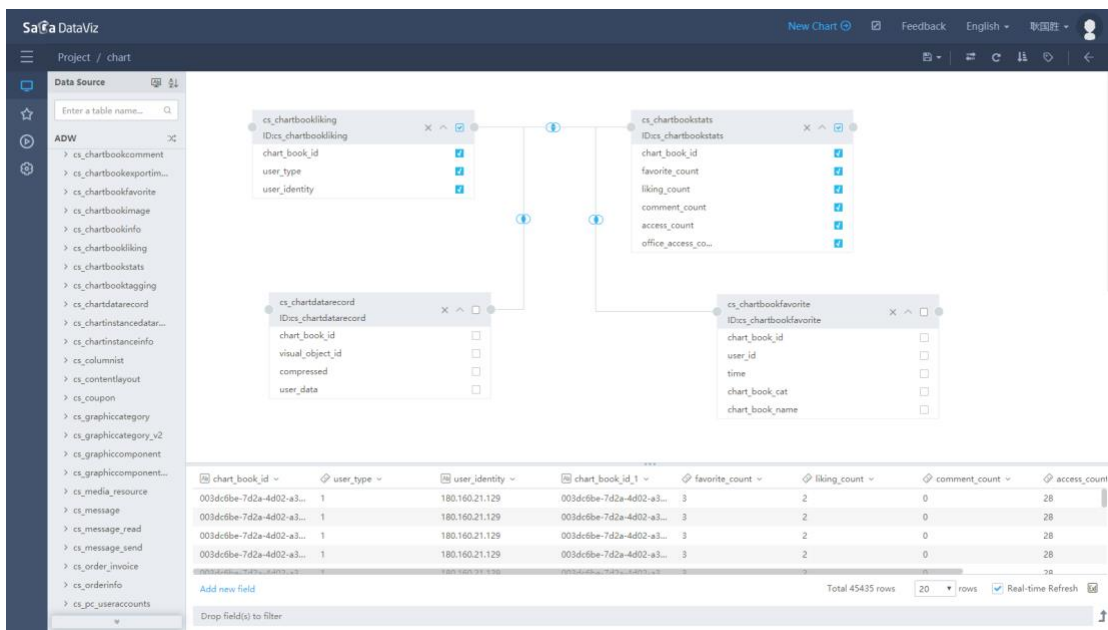
4) Choose Oracle ADW as a data source under the 'Data Source' section. As shown in the following figure.



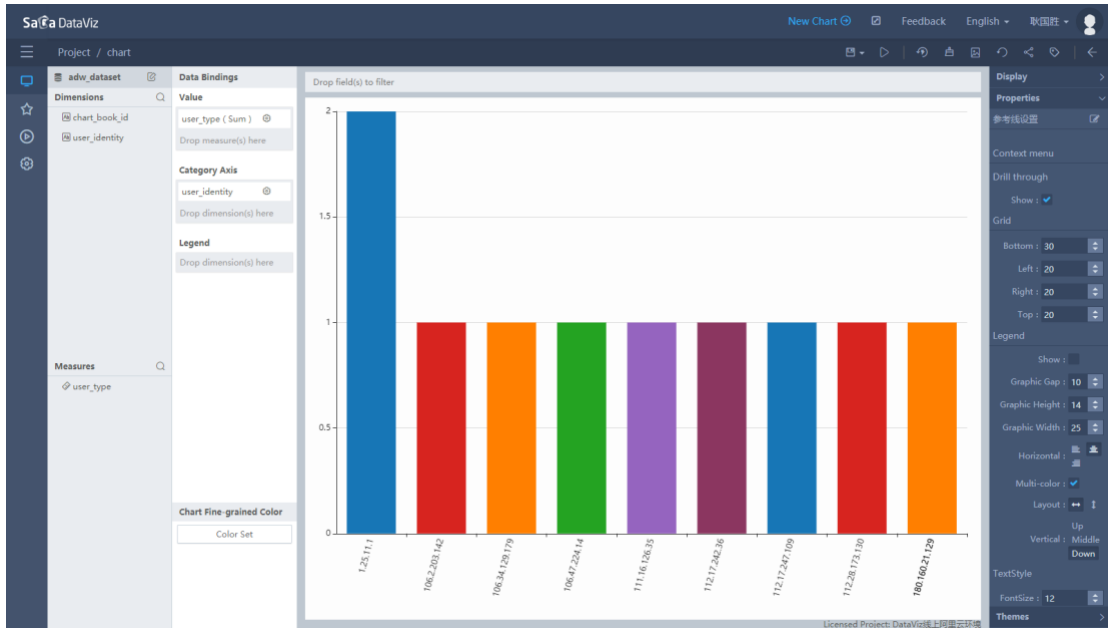
5) Enter the name of the Data source. Browse and upload the ADW credential wallet zip file which you download before. Supply the database username, password and service name. Test your connection by pressing the Test Link button.



6) If the connection is successful, press the OK button. You are now ready to analyze/visualize. Now you have successfully connected SaCa DatViz to ADW!



7) After the completion of the DataSet, you can make self-service analytics and create your own dashboard.



For instructions on how to get started, follow the SaCa DataViz Video Tutorials available at: <https://www.idataviz.com/> and refer to our full set of online documentation at: <http://www.idataviz.com/doc/>