



[Pennantplc.co.uk](http://Pennantplc.co.uk)

**Customer:**

Pennant International plc operates worldwide, with offices in Europe, North America and Australasia. The Group exports a range of technical solution to the defense sector. This includes the OmegaPS suite, an advanced Integrated Logistic Support application

**Oracle products:**

Weblogic 12c  
Forms/Reports 12c

**Project scale:**

1450 Forms  
270 Reports  
90 days

**Solution:**

Value-adding upgrade, now consenting with the general GUI's in a Web 2.0 environment

**About SoftBASE A/S**

<http://www.softbase.dk>

Copenhagen based ISV offering tools for Forms and APEX

**Credits:**

David Cleverly  
Technical manager  
Pennant International



➔ Upgrade of 1450 Forms to level 12c - combined with new look & feel plus addition of integrations and workflow functionality

**Chris Mair, General Manager at Pennant International Ltd Fareham**

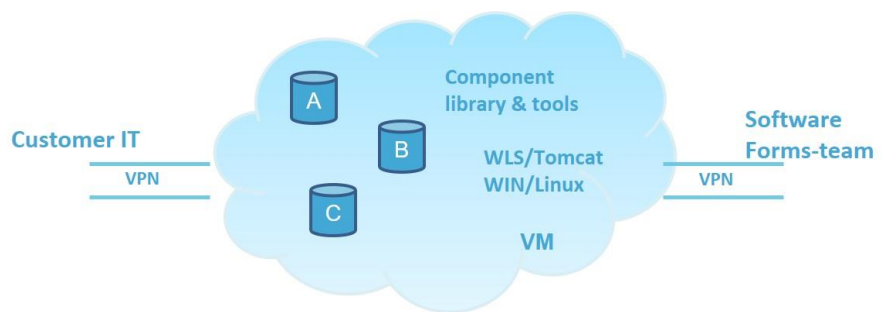
The OmegaPS LSAR Software suite is an Internationally recognised industry strength Integrated Logistic Support (ILS) application, developed over 28 years and include additions of functionality and further compliance with military standards worldwide.

The system is implemented into complex environments and the policy has been to secure continuity, integration and safe upgrade.

The system currently deployed is an Oracle Forms & Reports and Oracle DB version 11 application including some additional APEX developed functionality.

The Forms Value-upgrade toolset from SoftBASE neatly matched Pennant's policy and allowed us to accelerate modernization of the look & feel of our forms and add components for screen reporting, integration and workflow. Concurrently the system was upgraded to Forms version 12.

The project was handled remotely via a development system at the SoftBASE hosting centre accessible to Pennant staff for testing and QA. In excess of 1400 forms were upgraded, some with complex embedded code and all completed within the agreed time-frame of 90 days.



**Environment setup**

The process was performed on a hosted development server for Forms version 12.2.1.3, delivered by SoftBASE through its Hosting center. The Server was connected to the Customers LAN through a Site-Site VPN and acted as an extension/outsourcing of the customer's development environment. The agility of the project was achieved through on-line web meetings and simultaneous access to the code.

## The process

The process consisted of an automated script, using the JDAPI, resizing the frames and objects of the Form, and at the same time as a tuner for the Forms internal objects, including spelling of libraries, Visual Attributes, Canvases, Windows and Items.

Afterwards the “Value Upgrade” objects as well as Productivity Objects were added through Libraries, and Object Libraries were added without changing any existing code.

Entire process plus refinement post-upgrade sums up to 10-20 minutes per form.

## Business Benefits

The application is again a part of the Oracle family of supported Tools and is prepared for the future. The modern look and feel of the application improve user experience. The productivity Tools make every day work for the user faster and lighter, including reporting, navigation and workflow. The cross-product workflow enables using APEX as an integrated part of the application, making reporting and analysis state of the art.

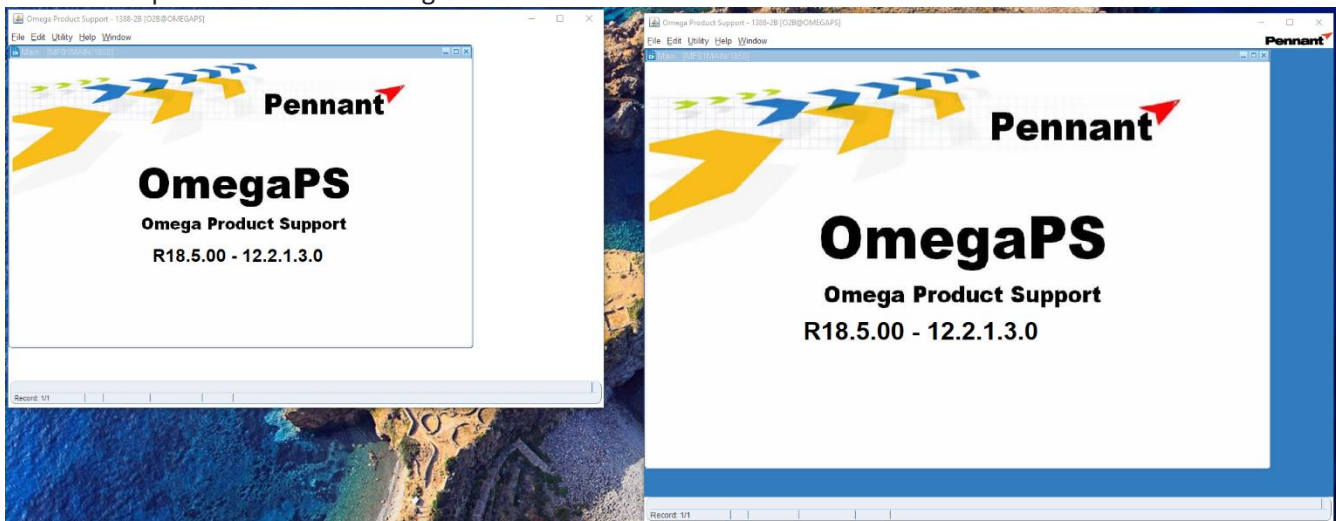
## Technical Highlights

Below three examples of before and after, including the resizing, color schemes, toolbar. Please note the new icons for workflow and side menu.

Old

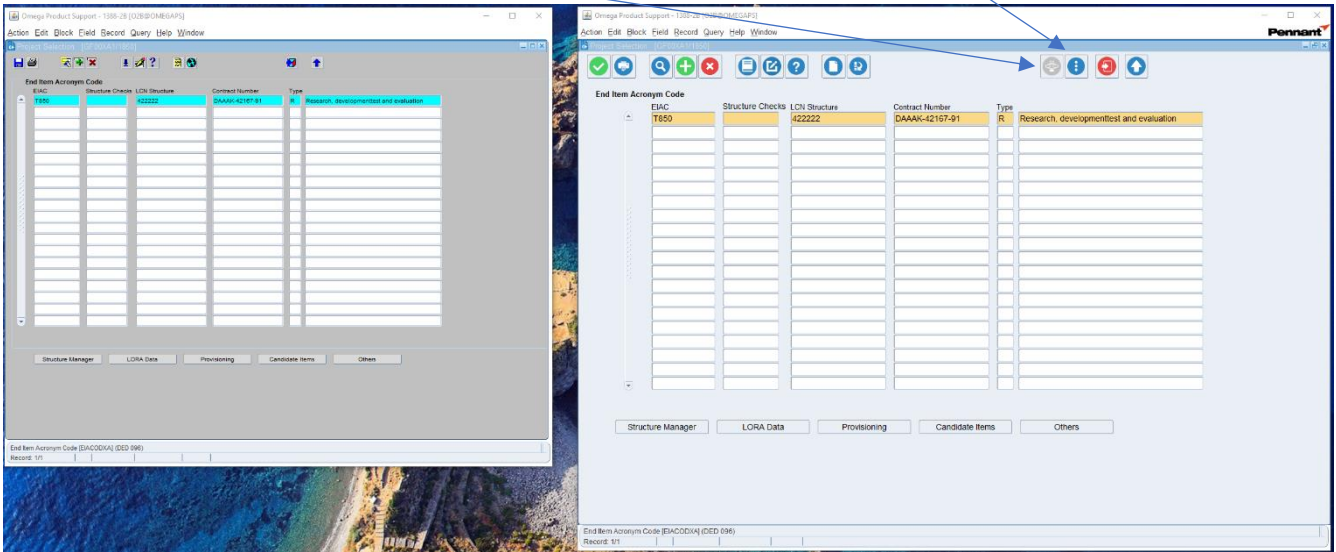
New

The Startup Form resized to fit High definition Screen resolution.

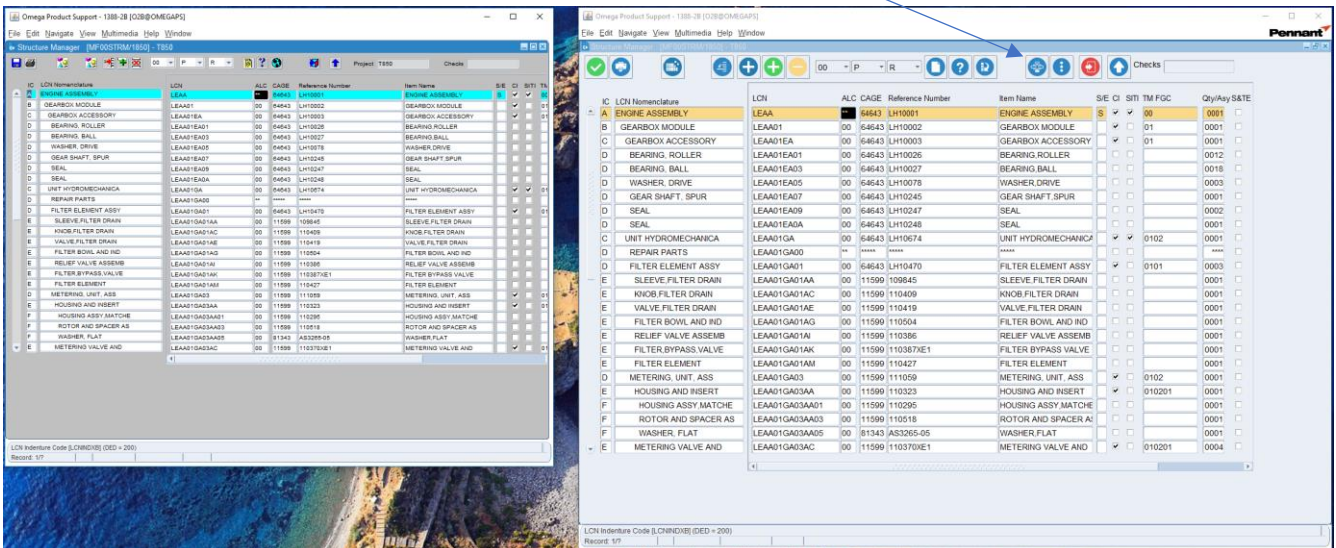


The project select screen with new toolbar and color scheme for modern design. Notice the modern icons, as well as new buttons for Workflow and side menu. The Workflow being disabled, as no workflow is yet defined for the team and screen.

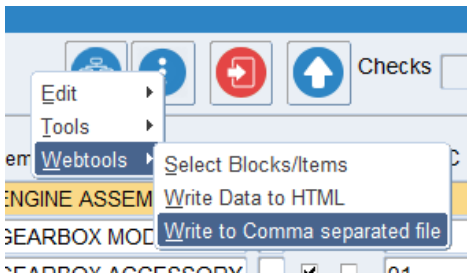
The workflow disabled and the side menu active.



The structure manager with the new toolbar. Here the workflow is active for the team using the screen.



A part of the productivity Tools, the screen reporting



Opening automatically and nicely formatted in Excel. This addition for screen reporting enhanced user-productivity is available in all screens.

Column1	Column2	Column3	Column4	Column5	Column6	Column7	Column8	Column9	Column10	Column11	Column12	Column13	Column14	Column15
IC	LCN Nomenclature	LCN	ALC	CAGE	Reference Number	Item Name	S/E	CI	SITI	TM FGC	Qty/Asy	S&TE	Multimedia	
4	A	ENGINE ASSEMBLY	LEAA	**	64643	LH10001					0001	N	N	N
5	B	GEARBOX MODULE	LEAA01	00	64643	LH10002				01	0001	N	N	N
6	C	GEARBOX ACCESSORY	LEAA01EA	00	64643	LH10003				01	0001	N	N	N
7	D	BEARING, ROLLER	LEAA01EA01	00	64643	LH10026					0012	N	N	N
8	D	BEARING, BALL	LEAA01EA03	00	64643	LH10027					0018	N	N	N
9	D	WASHER, DRIVE	LEAA01EA05	00	64643	LH10078					0003	N	N	N
10	D	GEAR SHAFT, SPUR	LEAA01EA07	00	64643	LH10245					0001	N	N	N
11	D	SEAL	LEAA01EA09	00	64643	LH10247					0002	N	N	N
12	D	SEAL	LEAA01EA0A	00	64643	LH10248					0001	N	N	N
13	C	UNIT HYDROMECHANICA	LEAA01GA	00	64643	LH10674		Y	Y	0102	0001	N	N	N
14	D	REPAIR PARTS	LEAA01GA00	**	*****	*****					****	N	N	N
15	D	FILTER ELEMENT ASSY	LEAA01GA01	00	64643	LH10470		Y		0101	0003	N	N	N
16	E	SLEEVE, FILTER DRAIN	LEAA01GA01AA	00	11599	109845					0001	N	N	N
17	E	KNOB, FILTER DRAIN	LEAA01GA01AC	00	11599	110409					0001	N	N	N
18	E	VALVE, FILTER DRAIN	LEAA01GA01AE	00	11599	110419					0001	N	N	N
19	E	FILTER BOWL AND IND	LEAA01GA01AG	00	11599	110504					0001	N	N	N
20	E	RELIEF VALVE ASSEMB	LEAA01GA01AI	00	11599	110386					0001	N	N	N
21	E	FILTER, BYPASS, VALVE	LEAA01GA01AK	00	11599	110387XE1					0001	N	N	N
22	E	FILTER ELEMENT	LEAA01GA01AM	00	11599	110427					0001	N	N	N
23	D	METERING, UNIT, ASS	LEAA01GA03	00	11599	111059		Y		0102	0001	N	N	N
24	E	HOUSING AND INSERT	LEAA01GA03AA	00	11599	110323		Y		010201	0001	N	N	N
25	F	HOUSING ASSY, MATCHE	LEAA01GA03AA01	00	11599	110295					0001	N	N	N
26	F	ROTOR AND SPACER AS	LEAA01GA03AA03	00	11599	110518					0001	N	N	N
27	F	WASHER, FLAT	LEAA01GA03AA05	00	81343	AS3265-05					0001	N	N	N
28	E	METERING VALVE AND	LEAA01GA03AC	00	11599	110370XE1		Y		010201	0004	N	N	N

The side menu is dynamic per screen/module and team, making navigation fast. Notice the search item.

LCN	Nomenclature	ALC	CAGE	Reference Number
A	ENGINE ASSEMBLY	LEAA	**	64643 LH10001
B	GEARBOX MODULE	LEAA01	00	64643 LH10002
C	GEARBOX ACCESSORY	LEAA01EA	00	64643 LH10003
D	BEARING, ROLLER	LEAA01EA01	00	64643 LH10026
D	BEARING, BALL	LEAA01EA03	00	64643 LH10027
D	WASHER, DRIVE	LEAA01EA05	00	64643 LH10078
D	GEAR SHAFT, SPUR	LEAA01EA07	00	64643 LH10245
D	SEAL	LEAA01EA09	00	64643 LH10247
D	SEAL	LEAA01EA0A	00	64643 LH10248
C	UNIT HYDROMECHANICA	LEAA01GA	00	64643 LH10674
D	REPAIR PARTS	LEAA01GA00	**	*****
D	FILTER ELEMENT ASSY	LEAA01GA01	00	64643 LH10470
E	SLEEVE, FILTER DRAIN	LEAA01GA01AA	00	11599 109845
E	KNOB, FILTER DRAIN	LEAA01GA01AC	00	11599 110409
E	VALVE, FILTER DRAIN	LEAA01GA01AE	00	11599 110419
E	FILTER BOWL AND IND	LEAA01GA01AG	00	11599 110504
E	RELIEF VALVE ASSEMB	LEAA01GA01AI	00	11599 110386
E	FILTER, BYPASS, VALVE	LEAA01GA01AK	00	11599 110387XE1
E	FILTER ELEMENT	LEAA01GA01AM	00	11599 110427
D	METERING, UNIT, ASS	LEAA01GA03	00	11599 111059
E	HOUSING AND INSERT	LEAA01GA03AA	00	11599 110323
F	HOUSING ASSY, MATCHE	LEAA01GA03AA01	00	11599 110295
F	ROTOR AND SPACER AS	LEAA01GA03AA03	00	11599 110518
F	WASHER, FLAT	LEAA01GA03AA05	00	81343 AS3265-05
E	METERING VALVE AND	LEAA01GA03AC	00	11599 110370XE1

All Objects are native and compatible for future versions.