

UPGRADING ORACLE APPLICATION SERVER 10g SOLUTIONS TO ORACLE FUSION MIDDLEWARE 11g



Oracle provides tools and documentation to help you upgrade to Oracle Fusion Middleware 11g. In particular, the Upgrade Assistant provides a single user interface for upgrading all your Oracle 10g Identity Management, Portal, Forms, Reports, and BI Discoverer components.

Oracle Fusion Middleware Upgrade Assistant

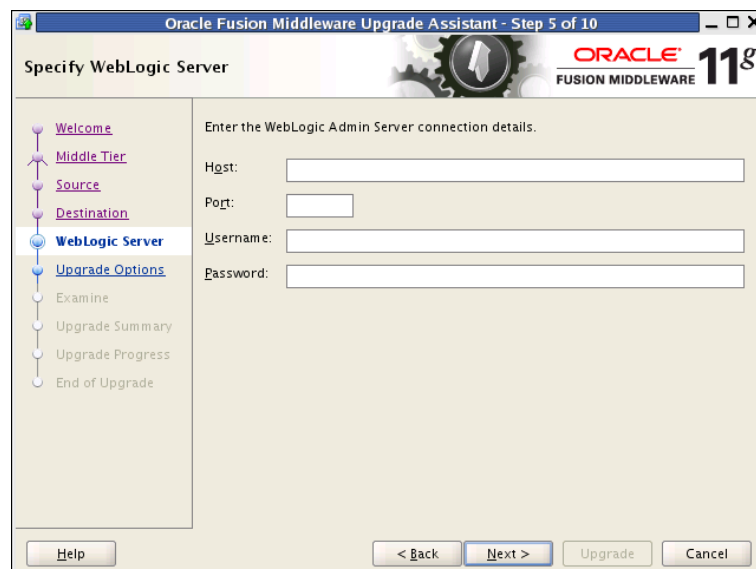


Figure 1. Through a single interface, administrators can upgrade existing Oracle Application Server 10g solution configurations and associated meta-data repositories to Oracle Fusion Middleware 11g.

The Oracle Fusion Middleware Upgrade Assistant is a wizard-based tool that automates the upgrade of Oracle Application Server 10g server configurations and metadata repositories. The Upgrade Assistant maximizes the reliability of upgrade with two important features:

- **Out-of-Place Upgrade of Server Configurations:** The upgrade assistant never modifies the server configurations of existing 10g servers. Instead, a parallel and comparable 11g configuration is created. This configuration is then updated by the upgrade assistant based on the 10g configurations.
- **Two Phase Upgrade:** The upgrade steps are divided into two phases. In the examination phase, the Upgrade Assistant performs a read-only analysis of all required upgrade operations based on the existing 10g

configuration. If the examination phase is successful, the Upgrade Assistant presents its results to the upgrade administrator. The administrator can then use this information to determine whether to continue with the second phase. In the second phase, the Upgrade Assistant performs the required upgrade tasks.

The Upgrade Assistant is designed to perform all upgrade tasks efficiently and can be run multiple times on the same installation. These features, and other built-in convenience features, such as the ability to retain port numbers during the upgrade process, make the Upgrade Assistant a powerful tool that ensures a seamless upgrade to Oracle Fusion Middleware 11g.

Upgrading Oracle Portal, Forms, Reports, and BI Discoverer

The Oracle Fusion Middleware Upgrade Assistant allows you to upgrade Oracle Portal, Forms, Reports, and BI Discoverer configurations as well as any Oracle HTTP Server and Web Cache 10g configurations fronting them. You need to run the Upgrade Assistant only once to upgrade multiple instances of these Oracle products within the same Oracle home.

Upgrading Oracle Identity Management

The Oracle Fusion Middleware Upgrade Assistant allows you to upgrade the following 10g Oracle Identity Management products:

- Oracle Internet Directory
- Oracle Directory Integration Platform
- Oracle Virtual Directory
- Oracle Identity Federation

The upgrade also ensures that existing 10g Oracle Single Sign-On configurations can continue working with the upgraded Oracle Identity Management components .

More Information

For more information about upgrading to Oracle Fusion Middleware 11g, please visit <http://www.oracle.com/technology/products/middleware/upgrade>.



Oracle is committed to developing practices and products that help protect the environment

Copyright © 2009, Oracle and/or its affiliates. All rights reserved.

This document is provided for information purposes only and the contents hereof are subject to change without notice. This document is not warranted to be error-free, nor subject to any other warranties or conditions, whether expressed orally or implied in law, including implied warranties and conditions of merchantability or fitness for a particular purpose. We specifically disclaim any liability with respect to this document and no contractual obligations are formed either directly or indirectly by this document. This document may not be reproduced or transmitted in any form or by any means, electronic or mechanical, for any purpose, without our prior written permission.

Oracle is a registered trademark of Oracle Corporation and/or its affiliates. Other names may be trademarks of their respective owners. 0109