



This guide describes how to manage and configure Oracle Business Intelligence using Oracle Enterprise Manager Fusion Middleware Control and Oracle WebLogic Server Administration Console.

For more detailed information about these and other tasks, see the [Oracle BI EE documentation](#) on Oracle Technology Network.



Understanding Tools for Managing Oracle Business Intelligence

You use different tools to manage different areas of Oracle Business Intelligence, including:

- Oracle Enterprise Manager Fusion Middleware Control
- Oracle WebLogic Server Administration Console

Oracle Enterprise Manager Fusion Middleware Control

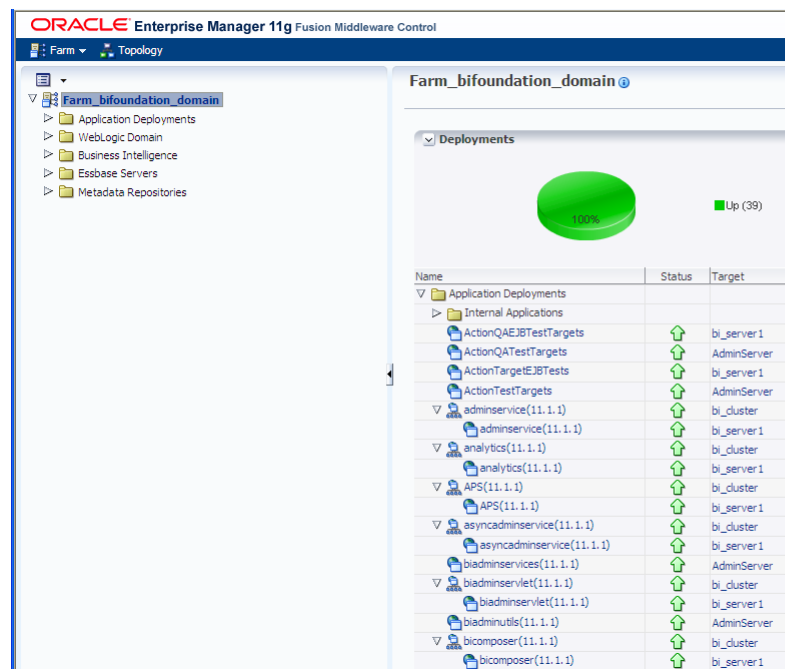
Fusion Middleware Control is a browser-based tool that is the recommended method for monitoring, managing, and configuring Oracle Business Intelligence components.

Fusion Middleware Control enables you to:

- Start, stop, and restart all system components and Managed Servers
- Configure preferences and defaults
- Scale out of system components
- Provide high availability configuration and status of system components
- Manage performance and monitoring system metrics
- Perform diagnostics and logging

Fusion Middleware Control also provides access to Oracle WebLogic Server Administration Console, where you monitor and manage Oracle Business Intelligence Java components.

Fusion Middleware Control is available only if the Administration Server is running.



Understanding the Navigation Tree in Fusion Middleware Control

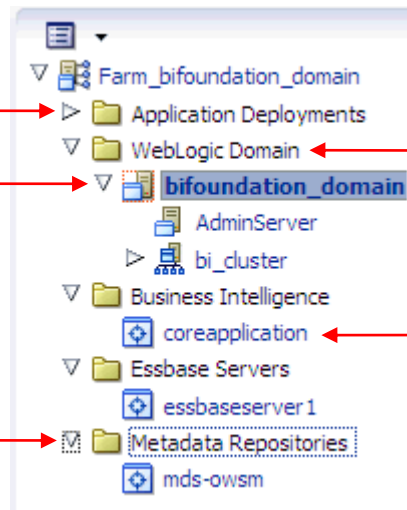
The navigation tree enables you to navigate within the BI domain that can be managed by Fusion Middleware Control.

Shows all the applications that are deployed into the BI domain (for example, analytics, Oracle Business Intelligence for Microsoft Office, Oracle BI Publisher, and Oracle Real-Time Decisions).

Represents the WebLogic server domain for Oracle Business Intelligence with:

- An AdminServer node that contains the Administration Server
- A bi_cluster node that contains Managed Servers (a single node cluster by default)

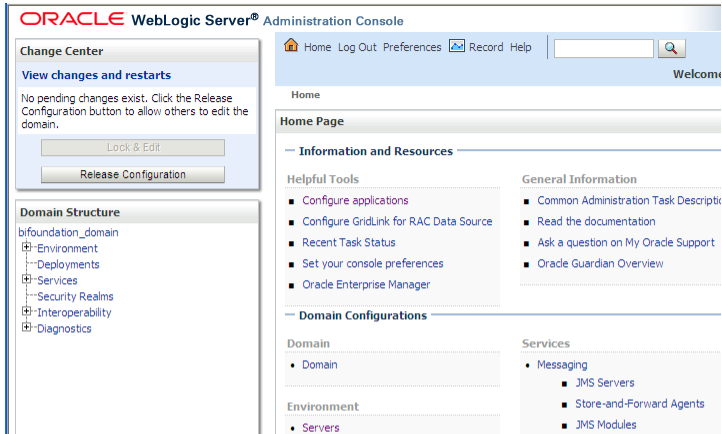
Represents the Metadata Services (MDS) schema repositories that can be managed using Fusion Middleware Control.



Displays summary information for the WebLogic server. Select a node and click the Oracle WebLogic Server Administration Console link to display the WebLogic Server Administration Console, where you can administer Oracle WebLogic Server.

Represents the Oracle Business Intelligence system components that can be managed using Fusion Middleware Control. Select this node to display the Overview page and manage the system components.

Oracle WebLogic Server Administration Console



Oracle WebLogic Server is a Java EE application server that supports the deployment of Oracle Business Intelligence Java components in a robust, secure, highly available, and scalable environment.

Oracle WebLogic Server Administration Console enables you to:

- Monitor the health and performance of JEE servers
- Configure WebLogic server domains
- Stop and start JEE servers
- View JEE server logs
- Manage user populations in the LDAP Server of the Oracle WebLogic Server

Using Fusion Middleware Control to Manage Oracle Business Intelligence

Logging into Fusion Middleware Control

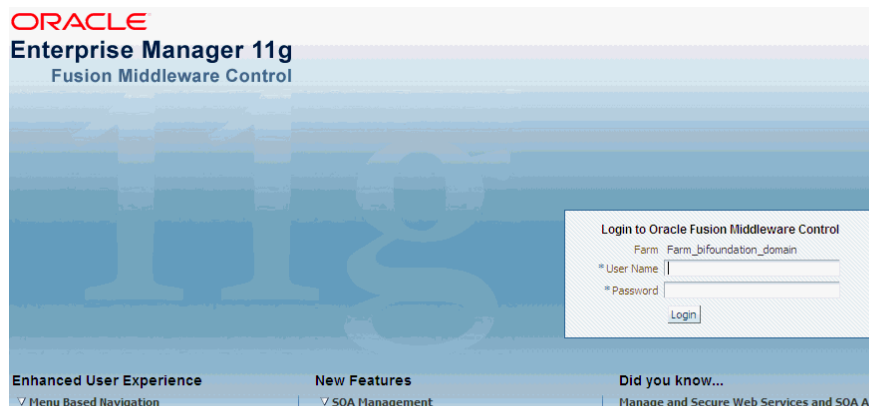
1. Open a web browser and enter the Fusion Middleware Control URL in the address bar in this format:

<http://hostname.domain:port/em>

The port number is the number of the Administration Server, and the default port number is 7001.

2. Enter the system administrator user name and password and click **Login**.

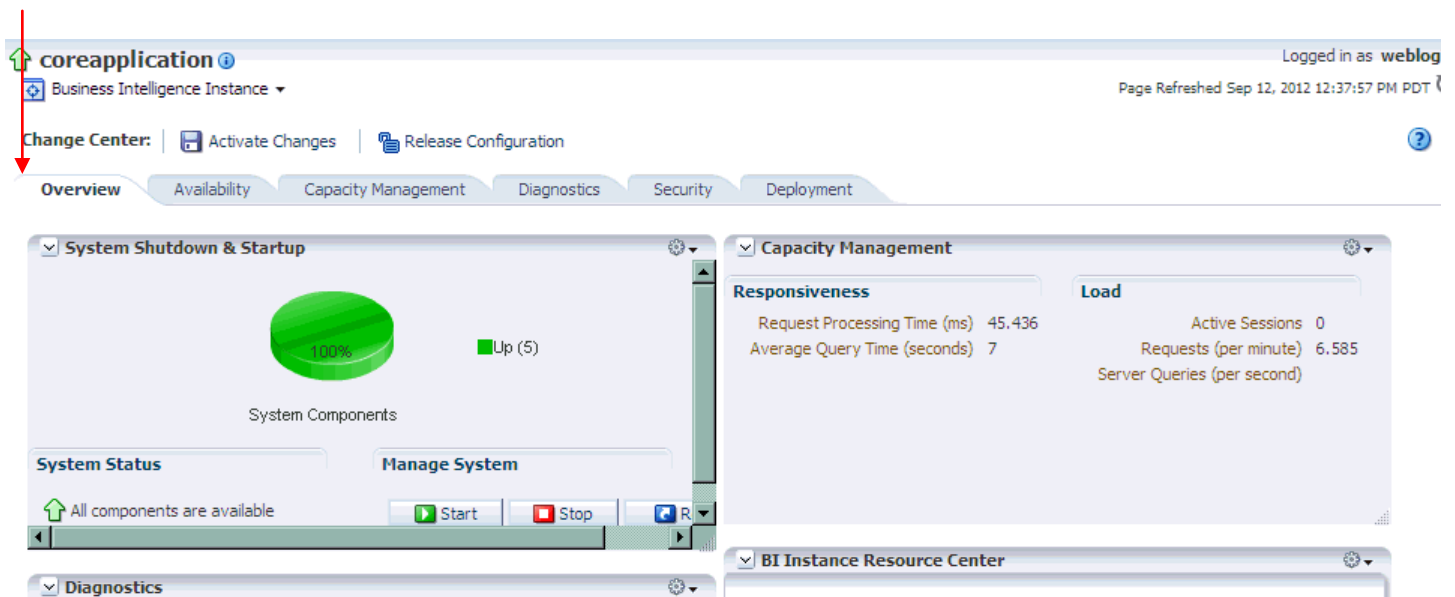
This systemwide administration user name and password was specified during the installation process.



Managing Oracle Business Intelligence System Components

The Overview page displays the current status of the system by providing information about current availability, performance, and issues identified within the BI domain.

1. Expand the Business Intelligence folder and select the coreapplication node. The Overview page is displayed.
2. From the Overview page, select an appropriate tab to perform Oracle Business Intelligence management tasks.



Monitoring Status and Starting and Stopping Oracle Business Intelligence Java Components

- Expand the WebLogic Domain folder and select the bifoundation_domain node. This is the starting point for monitoring status and for starting and stopping Oracle Business Intelligence Java components.
- Using the bifoundation_domain page, you can perform the following Oracle Business Intelligence management tasks:
 - View the status of the Administration Server and Managed Servers (bi_server<n>).
 - Start and stop selected Java components (Administration Server or bi_server<n>) using the WebLogic Domain menu **Control** option.
 - Launch WebLogic Server Administration Console, where you manage or configure the WebLogic server domain. For more information, see [Managing Oracle Business Intelligence Java Components](#).

ORACLE Enterprise Manager 11g Fusion Middleware Control

Farm Topology

bifoundation_domain

WebLogic Domain

Summary

General

Administration Server AdminServer
 Administration Server Host adc00cam.us.oracle.com
 Administration Server 7001
 Administration Server Listen Port

To configure and manage this WebLogic Domain, use the [Oracle WebLogic Server Administration Console](#).

Servers

Up (2)

Name	Status	Host	Cluster	Listen Port	Active Sessions	Request Processing Time (ms)
AdminServer	↑	adc00ca...		7001	1	37
bi_server1	↑	adc00ca...	bi_cluster	9704	0	12

Clusters

Name	Servers	Cluster Address
bi_cluster	1	

Deployments

Name
Application Deployments
Internal Applications
ActionTargetEJBTests
ActionTestTargets
adminservice(11.1.1)

Updating Configuration Settings Using Fusion Middleware Control

1. Go to the Business Intelligence Overview page and select the appropriate page and tabs to display the settings to change.
2. Click **Lock and Edit Configuration**.
Note: You need to click **Lock and Edit Configuration** before you can update the system's configuration settings.
3. Make the appropriate changes on each page. For example, in the Performance tab of the Capacity Management page, you might set query cache parameters.
4. Click **Apply** on each page after you have made your changes.
Tip: If you change your mind, you can cancel all the changes that you have made since clicking **Lock and Edit Configuration** by clicking **Release Configuration**.
5. After you have completed your updates, click **Activate Changes** to execute your changes and release the lock.
6. Go to the Overview page and click **Restart**.



Using Oracle WebLogic Server Administration Console to Manage Oracle Business Intelligence

Managing Oracle Business Intelligence Java Components

1. If the Administration Server for WebLogic Server is not running, start it.
2. Display the Oracle WebLogic Server Administration Console as follows:
 - a. Display Fusion Middleware Control.
 - b. Expand the WebLogic Domain node and select the bifoundation_domain.
 - c. Click the **Oracle WebLogic Server Administration Console** link in the Summary region. The Oracle WebLogic Server Administration Console login page is displayed.
3. Enter the system administrator user name and password and click **Login**.
If the browser is configured to send HTTP requests to a proxy server, then you might have to configure the browser to not send Administration Server HTTP requests to the proxy. If the Administration Server is on the same computer as the browser, then ensure that requests sent to localhost or 127.0.0.1 are not sent to the proxy.
4. In Oracle WebLogic Server Administration Console, select the bifoundation_domain page, where you monitor and manage Oracle Business Intelligence Java components.

