

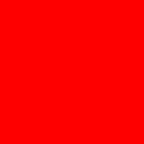
ORACLE®



ORACLE®

JD Edwards and Oracle Application Integration Architecture: One Powerful Combination

Chris Walsh	Oracle	- <i>Principal Product Strategy Manager</i>
Tom Carrell	Oracle	- <i>Product Strategy Director</i>
Sandra Benson	CSS International	- <i>Vice President – Construction & Engineering Practice</i>
Murty Chennubhotla	Systeme	- <i>Director Client Services</i>



The following is intended to outline our general product direction. It is intended for information purposes only, and may not be incorporated into any contract. It is not a commitment to deliver any material, code, or functionality, and should not be relied upon in making purchasing decisions. The development, release, and timing of any features or functionality described for Oracle's products remains at the sole discretion of Oracle.

Program **Agenda**

- AIA Overview
- AIA Foundation Pack
- JD Edwards EnterpriseOne
- JD Edwards World
- Agile PLM Integration Overview
- Primavera P6 Integration Overview



Program **Agenda**

- **AIA Overview**
- AIA Foundation Pack
- JD Edwards EnterpriseOne
- JD Edwards World
- Agile PLM Integration Overview
- Primavera P6 Integration Overview



Why Application Integration Architecture

AIA Solutions Are:

Complete

- Reference Process Models
 - Application Content
- Lifecycle/Governance Tools
 - FMW Technology
- All supported by Oracle

*Enables You to do More
with Existing Investments*

Open

- Non-proprietary
- Standards-based
- Interoperable with other Applications and Middleware

*Gives You More Choice
& Flexibility*

Integrated

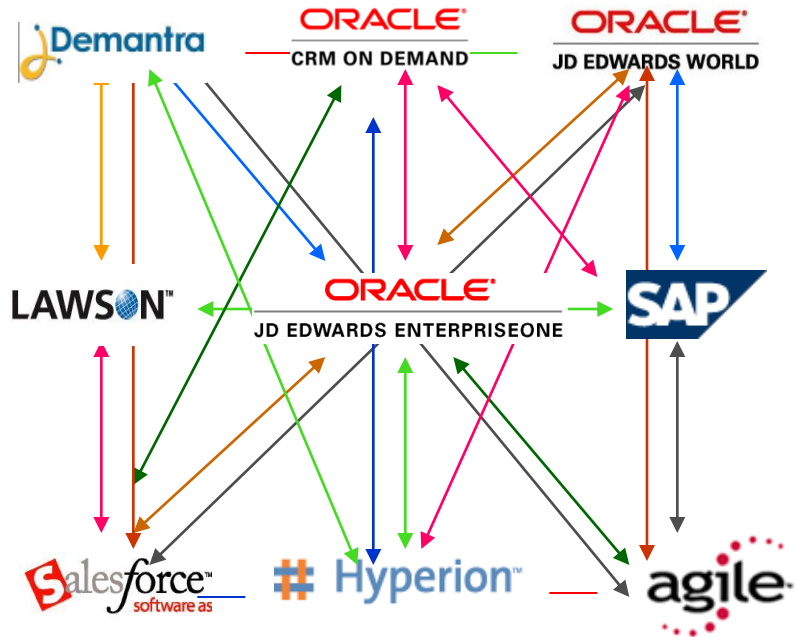
- Pre-integrated UIs
- Pre-integrated Data Flows
- Pre-integrated Process Flows
- Designed to Work Together

Lowers IT TCO

Adopt an Integrated Architectural Approach

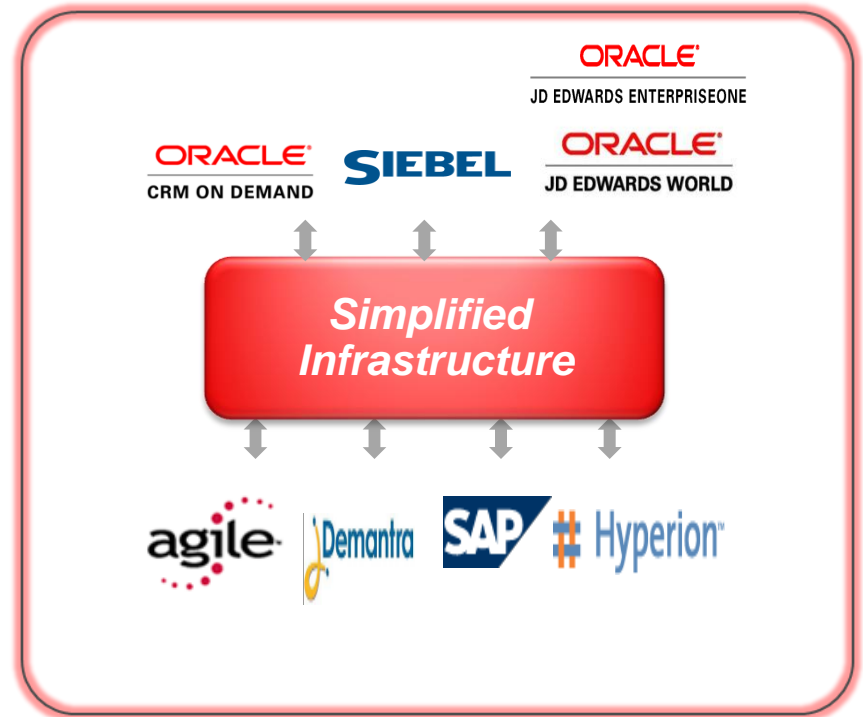
Built on Consistency and Standardization

Traditional Approach



- Costly
- Rigid
- Unsustainable

Streamlined Approach



- Packaged
- Agile
- Sustainable

Leverage Existing Apps to Create Cross-Functional Processes

Build integrated business processes powered by your best in class apps

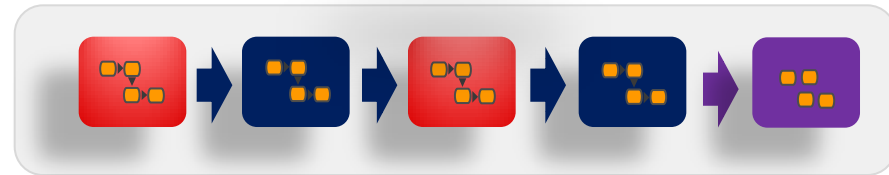
Siebel CRM Functionality



JD Edwards ERP Functionality



Your Legacy/Custom Functionality



CRM



ERP



Other

AIA is Oracle's Integration Strategy



Customers



Employees



Partners

User Interaction

Applications



Analytics

Collaboration



Content & Search

Composite Industry Processes

Applications



ERP



HCM

ORACLE
APPLICATION INTEGRATION
ARCHITECTURE

3rd Party Applications

Legacy Applications

Technology



Business Integration



Intelligence & Analytics



Security & Compliance



Data & Content



Scale & Continuity



Application Development



Enterprise Management

Existing Technology

Oracle Application Integration Architecture

Reduce Complexity and Accelerate Delivery

Customer Goal: Integrated Business Process



- **Best Practice Processes**

Reference Process Models

Composite Business Flows

- **Standardized Composition Framework**

100+ Objects, 1000+ Services

Cross Industry and Industry Objects

FMW 10.1.3.4 Certified

- **Pre-built Composite Processes**

30+ PIPs To Date

AIA For Communications

Oracle Application Integration Architecture

Foundation Pack

Business Process Composition Framework



Process Integration Packs

Pre-built Composite Application Processes



ORACLE FUSION MIDDLEWARE

How AIA Is Delivered

Oracle Application Integration Architecture

Process Integration Packs



- Loosely coupled composite business processes

Direct Integrations



Foundation Packs



- Comprehensive business process composition framework

ORACLE FUSION MIDDLEWARE

SOA & BPM Platform

Example Uses:

- *Modernizing apps*
- *Consolidating systems/MDM*
- *Improving/Extending processes*

Direct Integrations

Manage. Pre-built integrations to support data flows between systems

Process Integration Packs

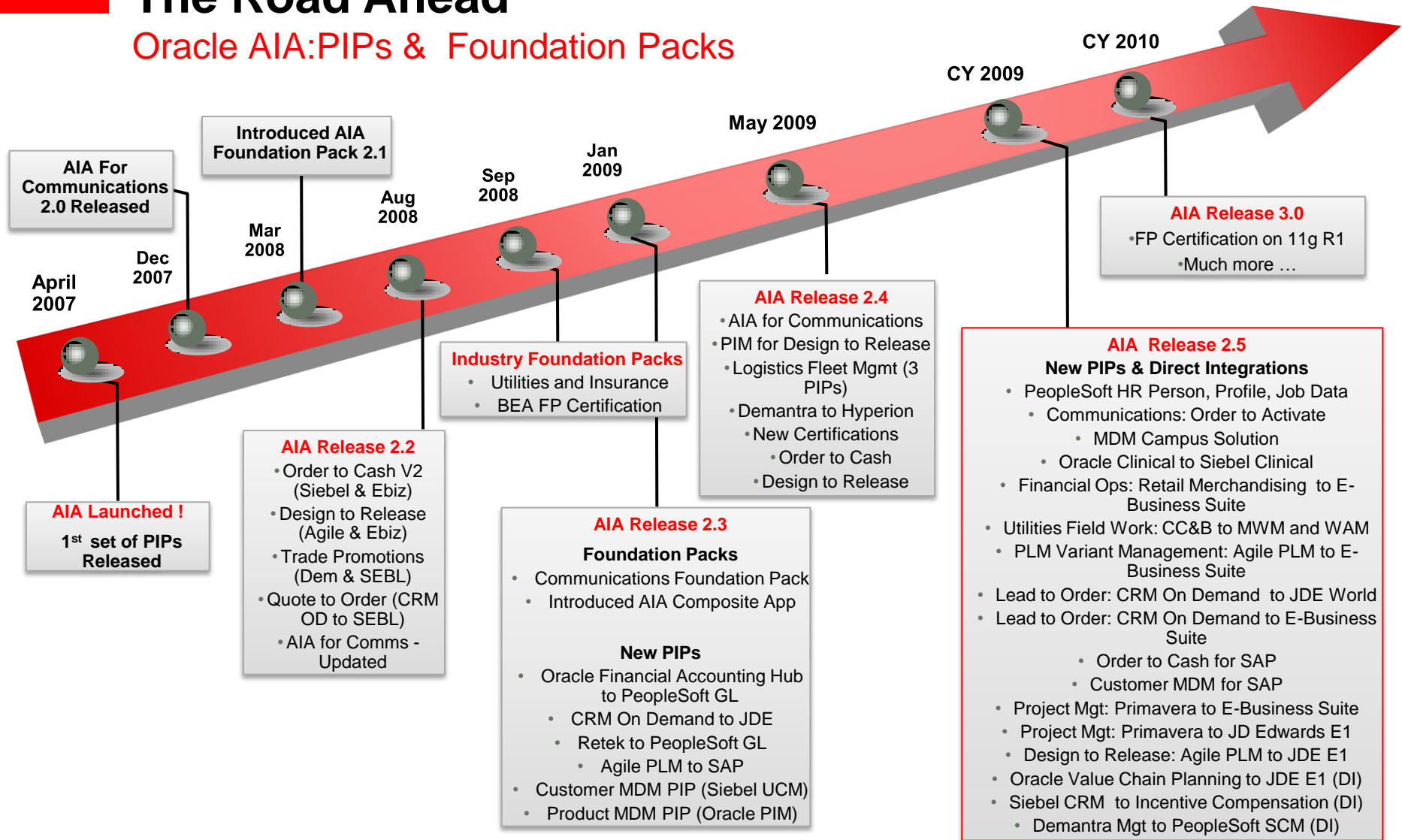
Optimize. Pre-built composite business processes across enterprise Applications

Foundation Packs

Standardize. Common Object and Shared Service Library with supporting SOA programming model and best practice implementation methods

The Road Ahead

Oracle AIA:PIPs & Foundation Packs



Program **Agenda**

- AIA Overview
- **AIA Foundation Pack**
- JD Edwards EnterpriseOne
- JD Edwards World
- Agile PLM Integration Overview
- Primavera P6 Integration Overview



AIA Foundation Pack

Accelerates Your Move to SOA and Improves Strategic SOA Success with Any-to-Any App Integrations

Oracle Application Integration Architecture

Process Integration Packs



- Loosely coupled composite business processes

Foundation Packs



- Comprehensive business process composition framework

Direct Integrations



BENEFITS

- ✓ Lowers Integration TCO
- ✓ Reduces Risk
- ✓ Drives Reuse and Consistency
- ✓ Speeds Time to Value
- ✓ Improves Management and Monitoring

- Pre-built SOA-in-a-box
- Application-independent
- Oracle's proven implementation of SOA

Foundation Pack Jump-Starts your SOA

Valuable Pre-built Content and Methodology

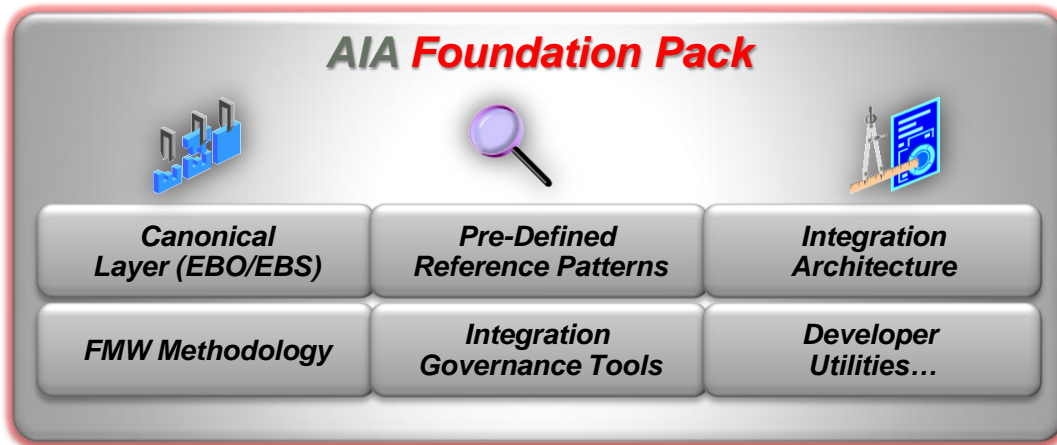
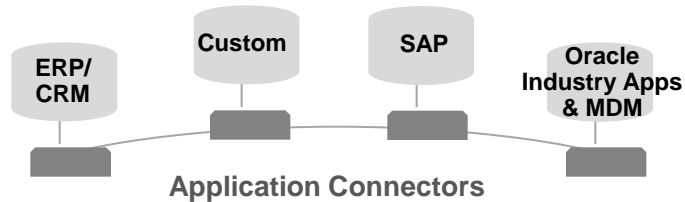
AIA FP Based Integration

Custom SOA Integration

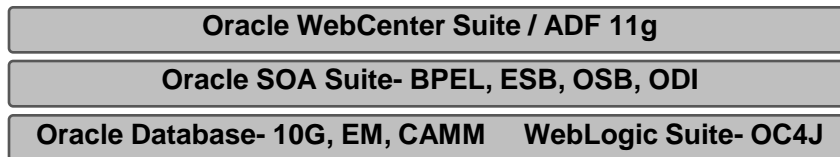
End To End Process		Define	Define
	•Execution Processes		
Content	•SOA Programming Model	✓ AIA Programming Model	Define
	•Business Process Definition	✓ Reference Process Models	Define and Build
	•Canonical Objects	✓ EBOs, EBSs	Define and Build
Platform	•SOA Repository	✓ Business Service Repository/ OER	Define, Build or Acquire
	•Development tool	✓ Oracle JDeveloper	Multiple Dev Tool
	•Business Process Design	✓ Oracle BPA Suite	Acquire
	•Orchestration Engine	✓ Oracle BPEL Process Manager	Acquire
	•Virtualization	✓ Ent. Service Bus or OSB	Acquire
	•Application Server	✓ Oracle Application Server / WebLogic Server	Acquire
Other	•Support	✓ Content & Platform	Only Platform

AIA Foundation Pack: Accelerates Time to Value

Best Practice Process, Shared Services, Design Patterns, Standards



ORACLE FUSION MIDDLEWARE

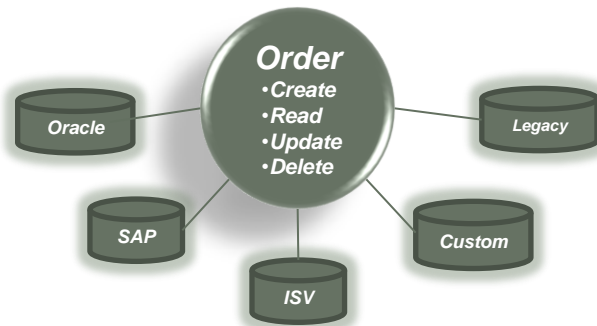


Predefined Application Integration Content that works with Oracle Fusion Middleware to speed the development of loosely-coupled process integrations.

Core Components:

- **Reference Process Models:** User based activity and task flows
- **Standardized Business Objects and Services:** Common vocabulary, reusable Services, Fusion Applications compatible
- **Integration Governance:** Service Repository, Error Handling, Automation Utilities
- **Developer Utility Tools:** Artifact Generator, XSL Mapping Analyzer, Build Script Tokenizer
- **Programming Models and Methodology:** Same approach used by Oracle Development
 - Supports both web service, batch and UI

Application Independent Enterprise Business Objects and Services Promote Interoperability



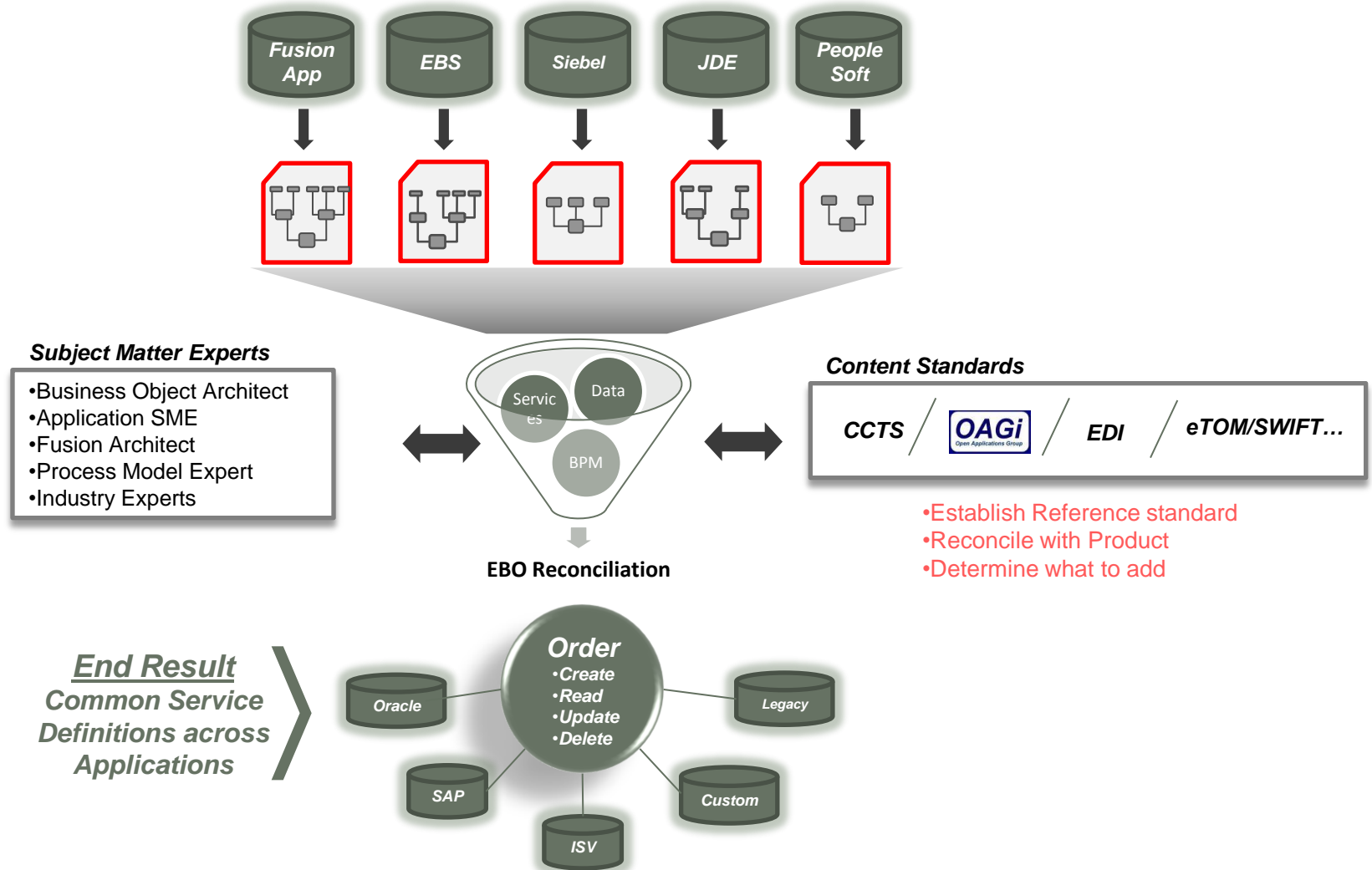
Connect systems and technologies through pre-built, standardized Enterprise Business Objects and Services

- Out of the box, library of reusable business services for cross application process automation
- Common semantics foundation to easily build, change and optimize business processes
- Building blocks and methodology to build your Enterprise Business Services

Characteristics

- ✓ Standardized Representation of Business Data
- ✓ Extensible Common Object Model
- ✓ Horizontal and Vertical Content
 - Communications
 - Insurance
 - Utilities
- ✓ Standards Support:
 - CCTS 9.0, OAG, ISO 11179
- ✓ Inputs from
 - Standards: OAGIS, SID...
 - Oracle Applications (SEBL, JDE, E-Biz, ..) and Fusion Applications

Oracle's Unique Differentiator for Any-to-Any Process Integrations



Library of Enterprise Business Services

New EBOs/EBSs added with each release

- | | | | | |
|-------------------------------|----------------------------------|---------------------------|-------------------------------|-----------------------------------|
| 1. Account Balance Adjustment | 15. Item Balance | 30. Bill of Lading | 46. Currency Exchange | 60. Insurance Claim |
| 2. Advance Shipment Notice | 16. Item Composition | 31. Demand Forecast | 47. Debit Memo | 61. UtilitiesMeter Reading |
| 3. Bill Of Materials | 17. Item Structure | 32. Freight Term | 48. Chart of Accounts | 62. UtilitiesService Usage |
| 4. Business Calendar | 18. Location | 33. Shipment Request | 49. Payment Term | 63. Communications ServiceUsage |
| 5. Customer Party | 19. Manufacture Item Composition | 34. Inventory Reservation | 50. Payable Invoice | 64. Communications Credit Alert |
| 6. Disbursed Payment | 20. Price List | 35. Accounting Entry | 51. Pick List | 65. Communications Trouble Ticket |
| 7. Engineering Change Order | 21. Purchase Order | 36. Credit Memo | 52. Promotion | 66. Shipment Advice |
| 8. Installed Product | 22. Quote | 37. Requisition | 53. Shipment Receipt | 67. ServiceRequest |
| 9. Invoice | 23. Received Payment | 38. Sales Order | 54. Supplier Party | |
| 10. Item | 24. Request For Quote | 39. Shipment Plan | 55. Sales Quote | |
| 11. Classification | 25. SpecificationValueSet | 40. Sales Opportunity | 56. SpecificationGroup | |
| 12. GLElementValueSet | 26. AccountingPeriod | 41. FulfillmentOrder | 57. AccountGLElement ValueSet | |
| 13. BankAccount | 27. ResourceCalendarEntry | 42. ProvisioningOrder | 58. TransportationSales Order | |
| 14. Worker | 28. TransportationStop | 43. Person | 59. Fund Transfer Schedule | |
| | 29. Check | 44. Fund Transfer | | |
| | | 45. Specification | | |

List of Recently Added EBOs

New for Foundation Pack 2.3

1. Account Balance Adjustment
2. Advance Shipment Notice
3. Bill Of Material
4. Business Calendar
5. Customer Party
6. Disbursed Payment
7. Engineering Change Order
8. Installed Product
9. Invoice
10. Item
11. Classification
12. GLElementValue
13. BankAccount
14. Worker

New	Updated	New Industry
<ul style="list-style-type: none"> • ResourceCalendarEntry • TransportationStop • FulfillmentOrder • ProvisioningOrder • TransportationSalesOrder • Worker • Person • TroubleTicket • CreditAlert 	<ul style="list-style-type: none"> • Invoice • AccountingEntry • CustomerParty • Item • PayableInvoice • InstalledProduct • SupplierParty • Classification • SalesOrder 	<ul style="list-style-type: none"> • Communications <ul style="list-style-type: none"> – FulfillmentOrder – ProvisioningOrder – CreditAlert – ServiceUsage – TroubleTicket • Verticalized Horizontal Objects <ul style="list-style-type: none"> – AccountBalanceAdjustment – CustomerParty – InstalledProduct – Invoice – SalesOrder – FulfillmentOrder

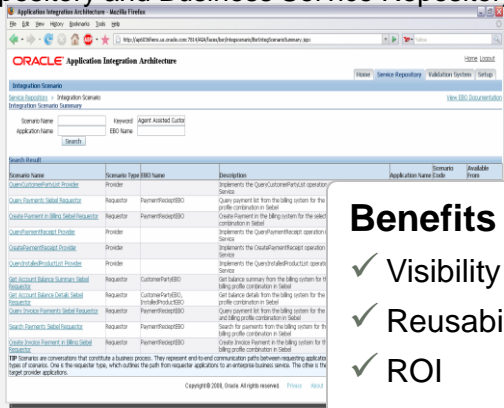
- Insurance Claim
- UtilitiesMeter Reading
- UtilitiesService Usage
- Communications ServiceUsage
- Communications Credit Alert
- Communications Trouble Ticket
- Shipment Advice
- ServiceRequest

AIA SOA Governance Tools

Manage, Analyze, Plan and Execute Change Faster and with Better Insight

SOA Visibility and Control

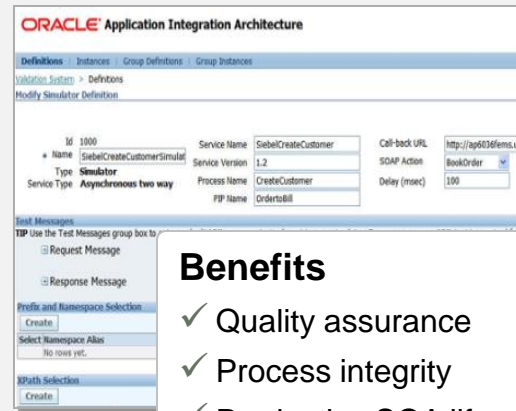
One stop shop for integration needs (Oracle Enterprise Repository and Business Service Repository)



Benefits

- ✓ Visibility
- ✓ Reusability
- ✓ ROI

SOA Testing Tool



Benefits

- ✓ Quality assurance
- ✓ Process integrity
- ✓ Productive SOA lifecycle

Validate integrations

- Individual services
- End-to-end flows across silos

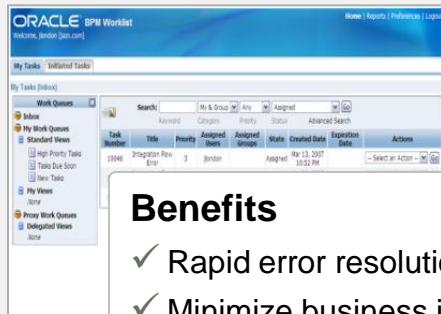
Quality throughout lifecycle

- Used at design-time: CAVS
- Used at runtime: Diagnostic Framework (Integrated with EM)

Simulator

- Emulate service invocations

SOA Runtime Management



Benefits

- ✓ Rapid error resolution
- ✓ Minimize business impacts

User friendly

- Search, drill-down, and auto alerts
- Logging
- Diagnostic scripts

Integration with Enterprise Manger

- Leverage Oracle Diagnostic Logging
- Search, filter and display via EM

Auto alerts

- Preference based notifications

AIA Powered by Fusion Middleware Infrastructure

SOA Execution

BPEL & ESB

ORACLE BPEL Console

Manage BPEL Domain | Logout | Support

Dashboard BPEL Processes Instances Activities

Title: Instance #304 of HelloWorld Last Modified: 2005-04-08 19:47:06.411
Reference Id: 304 Tree Finder State: closed.completed
BPEL Process: HelloWorld (v_1.0) Priority: 3 [more](#)

Manage Flow Audit Debug Interactions Sensor Values

Audit trail of this BPEL instance | [View Raw XML](#) [As of 4/8/05 7:47 PM] [Refresh View](#)

[2005/04/30 19:47:06] New instance of BPEL process "HelloWorld" initiated (# "304").

```
<process>
  <sequence>
    <client (process)>
      [2005/04/30 19:47:06] Received "inputVariable" call from partner "client" More...
    <CreateReturnString>
      [2005/04/30 19:47:06] Updated variable "outputVariable" More...
    <client>
      [2005/04/30 19:47:06] Reply to partner "client". More...
  </sequence>
</process>
```

SOA Runtime Mgmt

EM

ORACLE Enterprise Manager 10g

Application Server Control

Cluster Topology > Application Server: ssa.edCr1p1.us.oracle.com >
DC4J: home

Page Refreshed Sep 6, 2006 2:12:46 AM PDT • View Data Manual Refresh

Home Applications Web Services Performance Administration

General

Status Up [Stop](#) [Restart](#)
Start Time Sep 4, 2006 4:50:49 AM PDT
Version 10.1.3.1.0
Oracle Home E:\product10.1.3.1\OracleAS_3
Host edCr1p1.us.oracle.com
Virtual Machines 1
Notifications 0

Response and Load

12:12:40.001:201:492.00

Request Processing Time (seconds)
Requests per second

Home Applications Web Services Performance Administration

SOA Security

OWSM

ORACLE Enterprise Manager 10g

Web Services Manager Control

Policy Management

Operational Management

Snapshot Help

Snapshot Display Criteria

Compassion [Monitors] Sources [Timezone] Time Range [Last Hour]

Disable

Snapshot

Overall Statistics Security Statistics Service Statistics

Overall Failures 91.7% Authentication Failures 25% Service Failures 0%

Overall Latency 18 Authentication Failures 96.7% Service Latency 13

- Visibility to runtime state
- Comprehensiveness
 - Execution instance
 - Execution flows & activities
 - Messages, variables, & faults

- Manageability
 - Provision & Configuration
 - Monitoring via logging, reports, trends, and alerts
- Maximizing business results with IT operational excellence

- Policy lifecycle mgmt
- Monitor WS traffic for SLA
- Externalize security
 - Best-practice policy library
- Lower admin cost via flexible deployments
 - Gateway vs. Agents (end-to-end)

Composite Application Framework

Driving Agility through application Independent UI



Independent UI Technology



AIA Enterprise Business Services

Oracle Apps

Any
Application

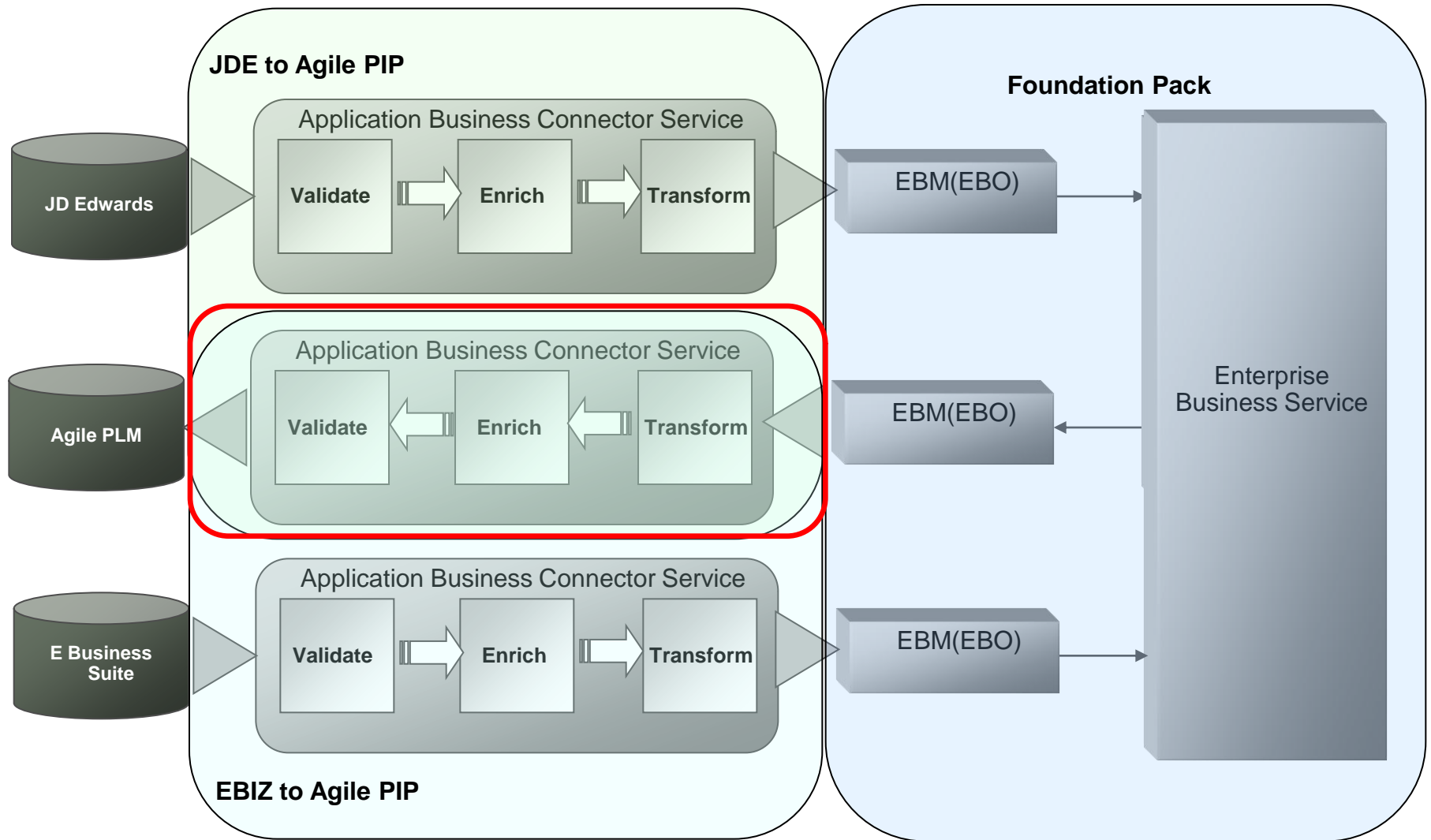
Any
Application

Any
Application

- Create application independent UI provisioned by multiple back-ends
- Build reusable durable, opportunistic, transactional composite applications
- Enable business process integration to standardize on AIA canonicals
- Opens up AIA Foundation Pack for consumption in multiple presentation technologies
- Data consistency across all channels

Foundation Pack And PIP's

Architecture Supports Re-Usable Components

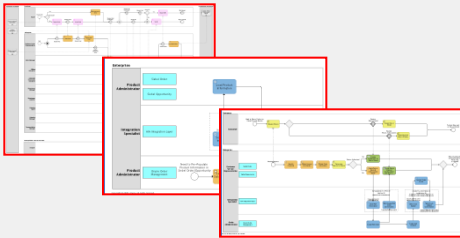


Process Integration Pack: Core Components

Utilize Pre-defined Components to Reduce Integration Effort and Costs

Process Design

- ✓ BPA Process Level Mappings



Integration Implementation

- ✓ Integration Flows (avg.20-30)
- ✓ Attribute Mappings between Apps
- ✓ Pre-built web services for participating Apps
- ✓ Extensible canonical data model
- ✓ UI-level Extensions
- ✓ Native Embedded UIs

Testing & QA

- ✓ All process flows tested, certified and supported by Oracle



Key Benefits of AIA PIPs:

Don't build from scratch
- use Oracle PIPs as
building blocks

- Baseline Process Design – DONE ✓
- Baseline Application Mappings and Services – DONE ✓
- Baseline UI integration – DONE ✓
- Integration flow testing & QA – DONE ✓
- Customizations – extension framework enables you to modify and extend attributes and process flows to your unique requirements

Program **Agenda**

- AIA Overview
- AIA Foundation Pack
- **JD Edwards EnterpriseOne**
- JD Edwards World
- Agile PLM Integration Overview
- Primavera P6 Integration Overview



Applications Integration Architecture (AIA)

JD Edwards EnterpriseOne Integration

- **Industry Reference Models**

Optimized business processes and best practices

- **Process Integration Packs**

Pre-built integrated Oracle Applications

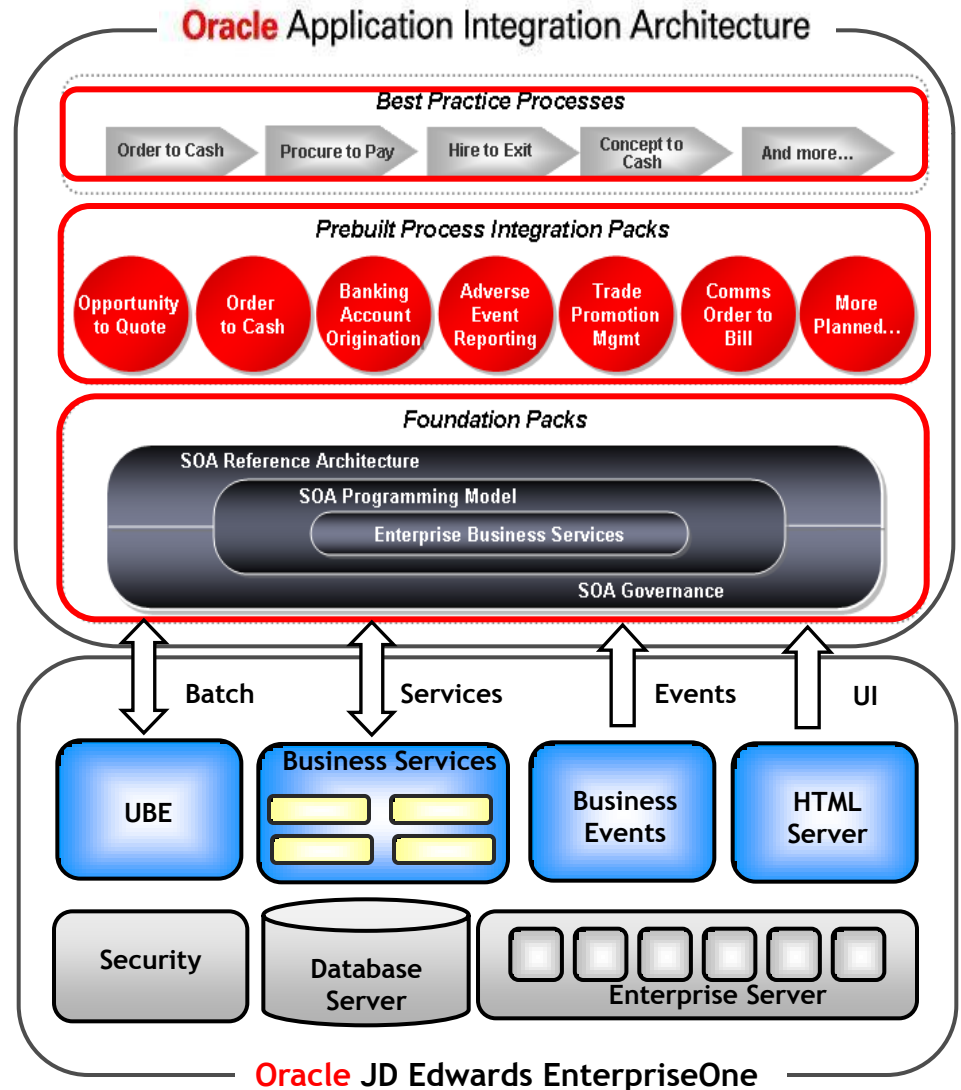
- CRM on Demand to JD Edwards EnterpriseOne

- **Foundation Packs**

Leverage predefined, application independent objects to create custom business processes across any of your applications.

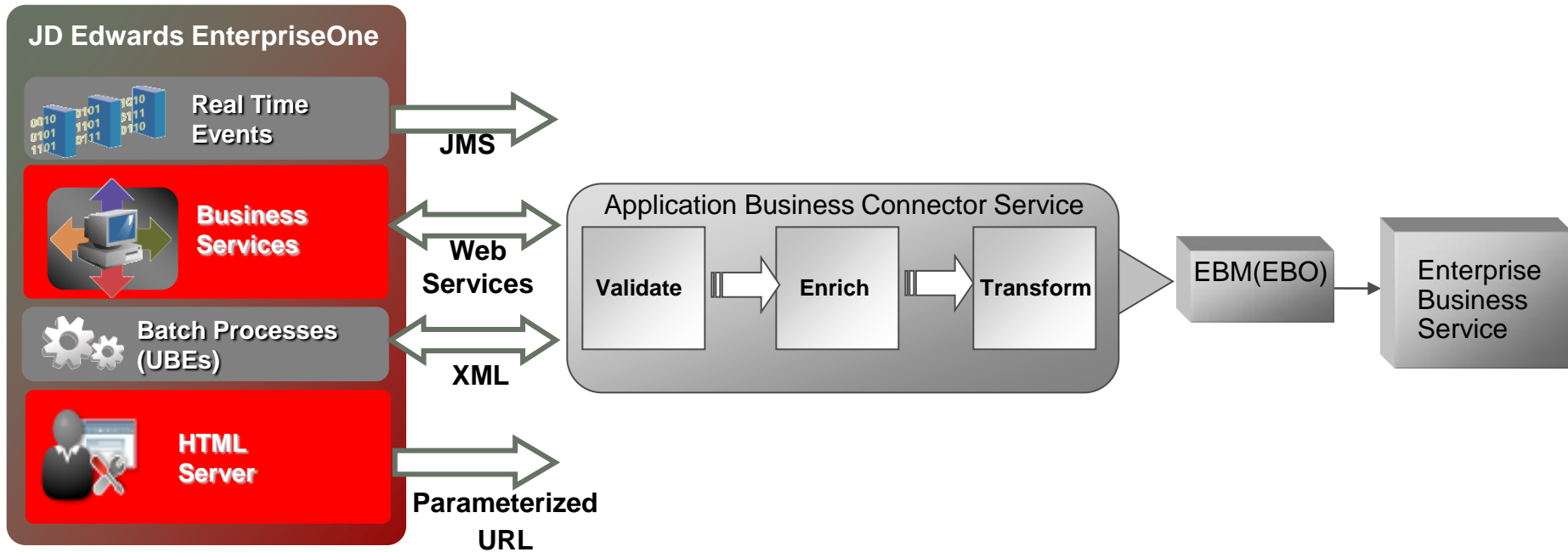
- **Integration Patterns For JDE E1**

- Batch Processes For Large Data Loads
- Services for Real Time Transactional Interfaces
- Events Engine For Asynchronous Business Events
- Seamless User Interface Across Applications



Applications Integration Architecture (AIA)

JD Edwards EnterpriseOne Integration



Standards Based Integration Design Model

- Built with SOA Design Principles In Mind
- Business Events (RTE) Leverage JMS Protocol for Guaranteed Event Delivery.
- Web Services Provide Loosely Coupled and Re-usable Transactional Interfaces.
- XML Files for Initial Data Loads and Periodic Data Synchronization.
- Parameterized URLs allow external systems to invoke E1 Applications.

JDE - AIA PIP Roadmap

Application	PIP	Foundation Pack (Planned)
▶ CRM On Demand	Opportunity To Quote – E1 8.12	RV 2.3 <i>Available Now!</i>
▶ CRM On Demand	Opportunity To Quote – E1 9.0	RV 2.5
▶ CRM On Demand	Opportunity To Quote – World A9	RV 2.5
▶ Primavera – P6	E & C Project Plan/Execute	RV 2.5
▶ Agile PLM	Design To Release	RV 2.5
▶ VCP	Oracle Value Chain Planning	RV 2.5

Program **Agenda**

- AIA Overview
- AIA Foundation Pack
- JD Edwards EnterpriseOne
- **JD Edwards World**
- Agile PLM Integration Overview
- Primavera P6 Integration Overview



Applications Integration Architecture (AIA)

JD Edwards World Integration

- **Industry Reference Models**

Optimized business processes and best practices

- **Process Integration Packs**

Pre-built integrated Oracle Applications

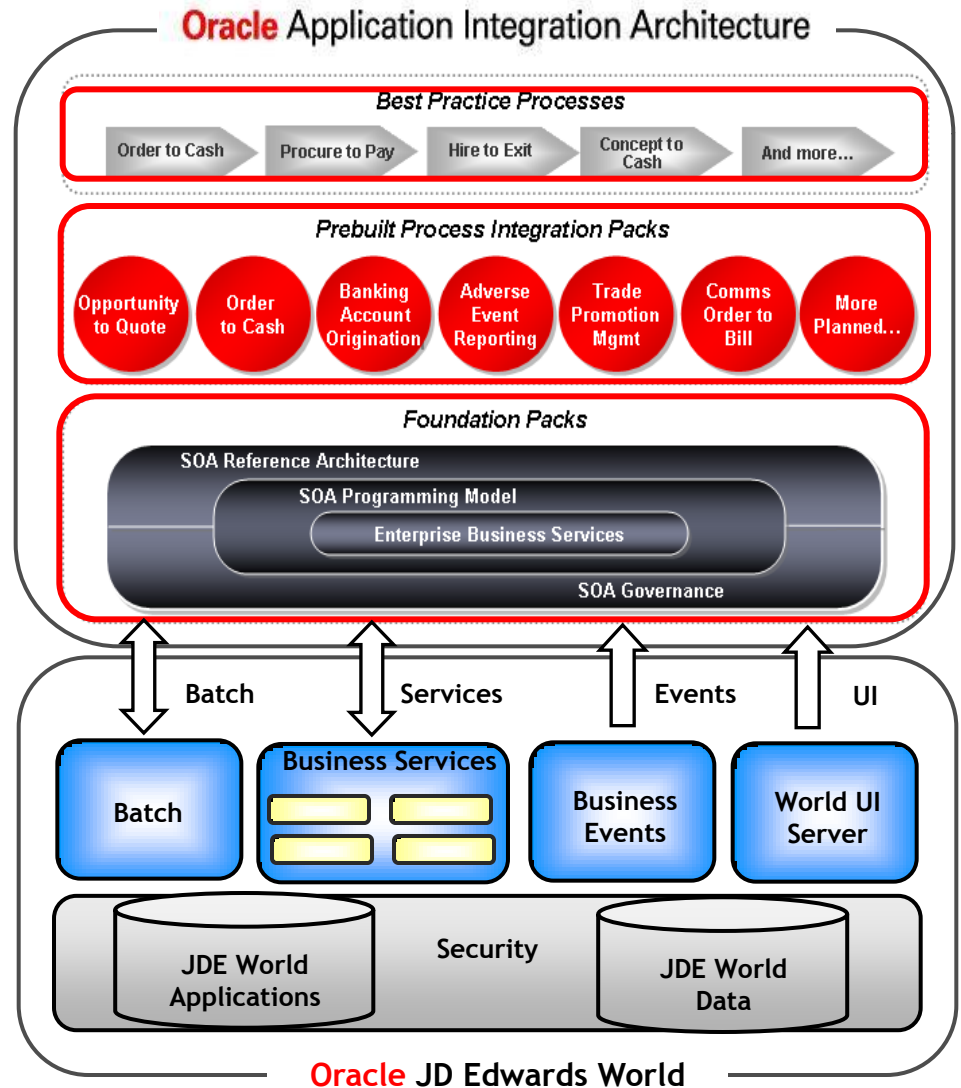
- CRM on Demand to JD Edwards

- **Foundation Packs**

Leverage predefined, application independent objects to create custom business processes across any of your applications.

- **Integration Patterns For JDE World**

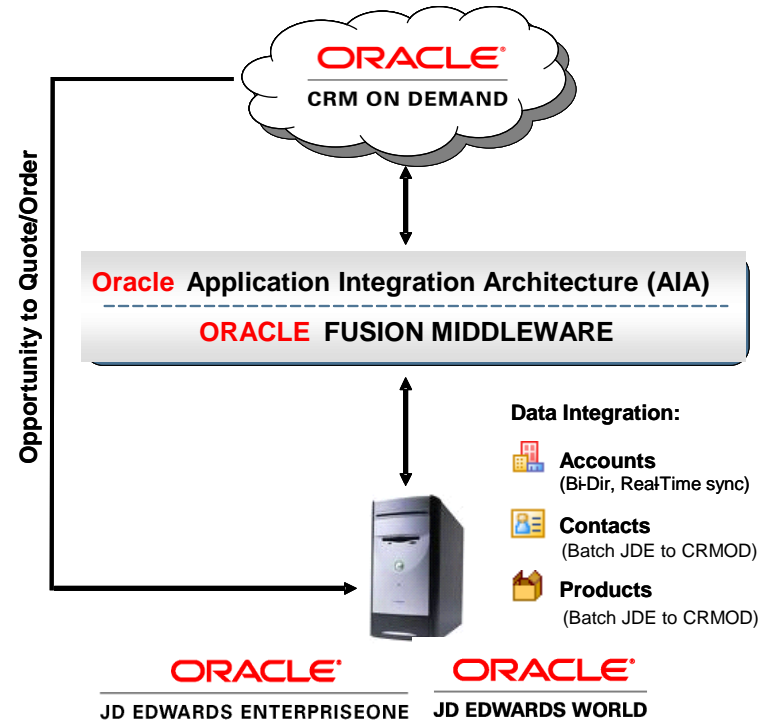
- Batch Processes For Large Data Loads
- Services for Real Time Transactional Interfaces
- Events Engine For Asynchronous Business Events
- Seamless User Interface Across Applications



Oracle CRM On Demand Integration Packs for JD Edwards EnterpriseOne & World

Features:

- Complete Lead to Quote & Order business process enabling full **360 degree view** of the customer
- Data integration of Accounts, Contacts, Products
- Real-time synchronization for Products and Accounts
- User interface integration into quotes and orders
- Integration flows consistent for EnterpriseOne & World



Oracle CRM On Demand Integration Pack for JD Edwards World

Best-of-class CRM for World!

Accounts - Windows Internet Explorer
http://sdchs20n599.siebel.com/OnDemand/user/AccountDetail?ocTitle=TLC+Industries&OMTGT=Account

HostedWorldServlet - Windows Internet Explorer
http://10.139.91.26:9999/jdeworld/hostedworldservlet?%&PID=N%7cP01200%&DataStructure=%7cP01200%

Supports Lead-to-Order process

Oracle AIA standards

Reuses EnterpriseOne PIP

Account Detail: TLC Industries

Key Account Information:

- Account Name: TLC Industries
- Location
- Parent Account
- Customer
- Customer Type: Bill To and Ship To Customer
- World Web Link: TLC Industries
- Row Id: 1QA2-07L

Account Sales Information:

- Account Type: Customer
- Priority
- Industry
- Public Company
- Region

Additional Information:

Billing

- Country: USA
- Number/Street: 1234 Tech Way
- Address 2
- Address 3
- City: Denver
- County
- State: CO
- Zip: 80237
- Owner: Admin

JDE World Integration:

Address Book Information

- Action Code
- Address Number: 7043
- Cons Code
- Alpha Name: TLC Industries
- Phone Number: +1 800 7418529, +1 303 3334455
- Mailing Name: TLC Industries
- Address: 1234 Tech Way
- Postal Code: 80237
- City: Denver
- State: CO Colorado
- Country: United States
- Language
- Industry Class
- Credit Message
- Parent Number

F5=Who F9=RelAddr F11=CIF Index F12=Phones F13=Cntl Info F24=More

Program **Agenda**

- AIA Overview
- AIA Foundation Pack
- JD Edwards EnterpriseOne
- JD Edwards World
- **Agile PLM Integration Overview**
- Primavera P6 Integration Overview



Why Agile PIP

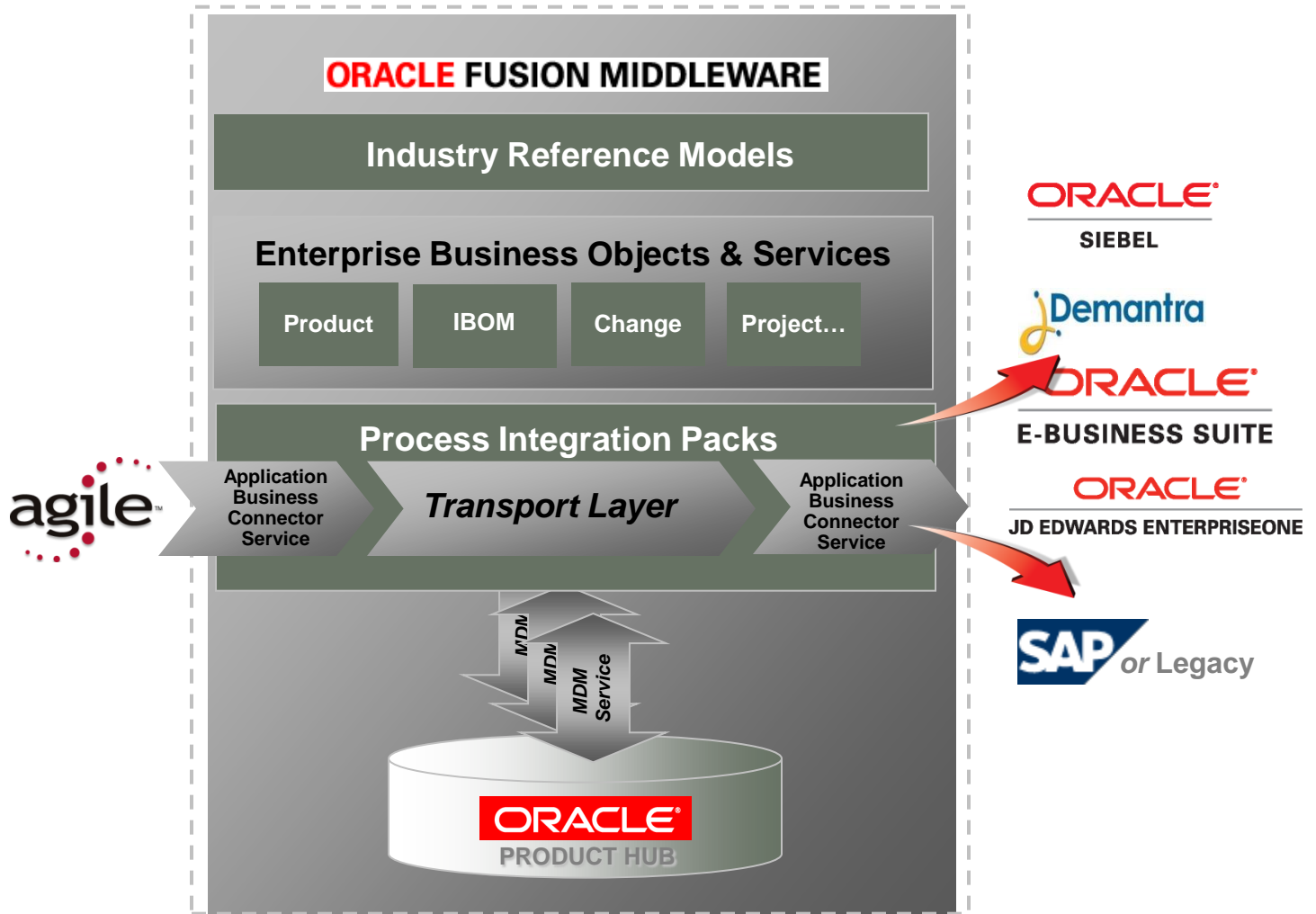
- **Common Issues in a typical Integration**
 - **Improper data transfer** leads to delays in product launch, compromised product quality and expensive inventory
 - **Lack of adapters**
 - with multi touch-point integration that seamlessly binds Agile PLM with ERP applications like JD Edwards Enterprise One.
 - that transfers data accurately between Agile PLM and JDE in real time
 - PIP eliminates the need for **manual synchronization** between the two systems, thereby enabling rapid product innovation and reducing excess and obsolete inventory.
 - **Error handling** in transferring the data is complex with other adapters in market

JDE E1-Agile PLM PIP Release 2.5

▪ Key Features

- PIP is based on industry best-practices and offers a business process based integration
 - PLM PIP (Process Integration Pack) is part of Oracle's AIA (Application Integration Architecture) initiative based on SOA (Service Oriented Architecture)
- Agile PLM Design-to-Release **Process Integration Pack** supports seamless exchange of product content between Oracle Agile PLM **(9.2.2.6)** and JDE ERP **(9.0)**
- Supports real time bi-directional integration solution between Oracle Agile PLM and JD Edwards Enterprise One whenever there is a change in the Product
- PIP is easy to deploy, configure, operate, maintain and upgrade
 - Highly scalable to support large volumes of product data
 - Highly configurable to easily map Product attributes between EnterpriseOne and Agile PLM
- Excellent tracking and monitoring capabilities
- Provides robust error handling and notification framework
- Offers the lowest total cost of ownership for Agile PLM-EnterpriseOne integration to customers

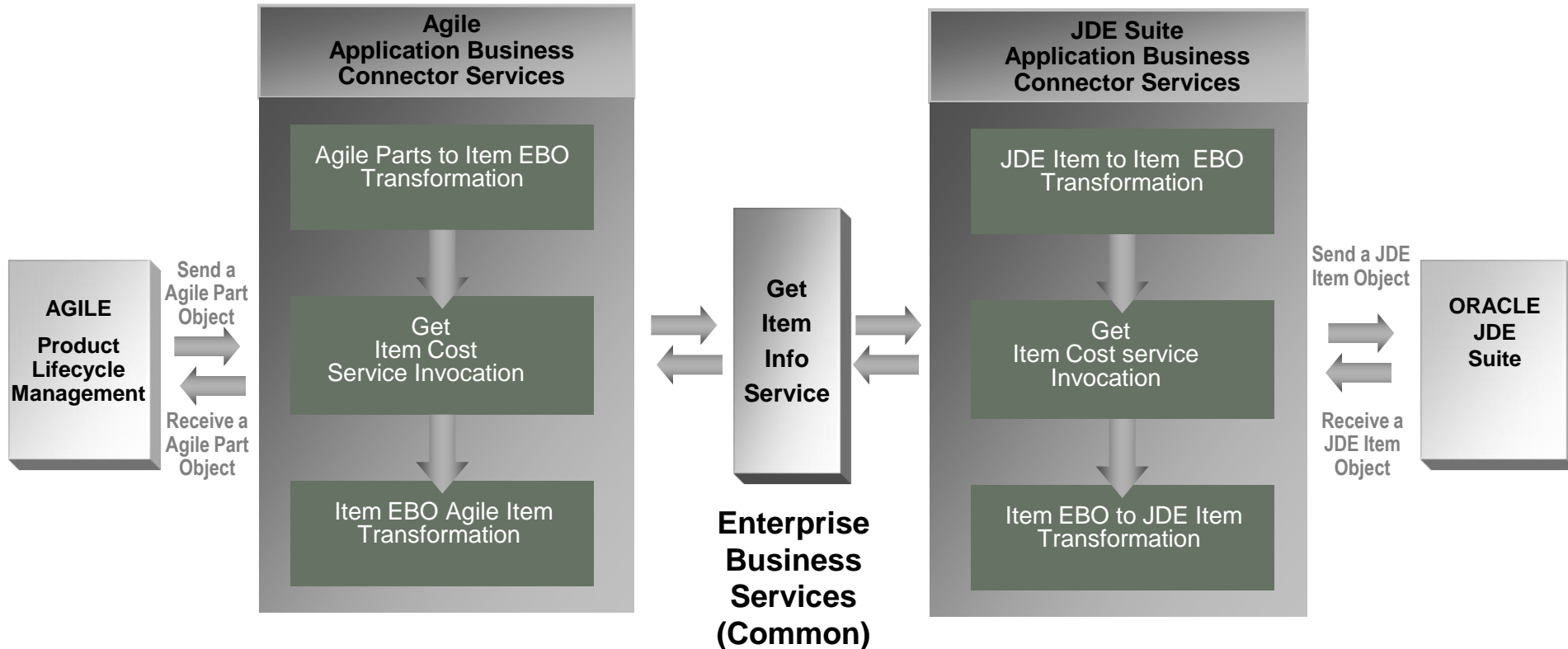
PLM On AIA – Solution Architecture



Agile PIP – Oracle JDE PIP

AGILE Application Business Connector Services

JDE Application Business Connector Services

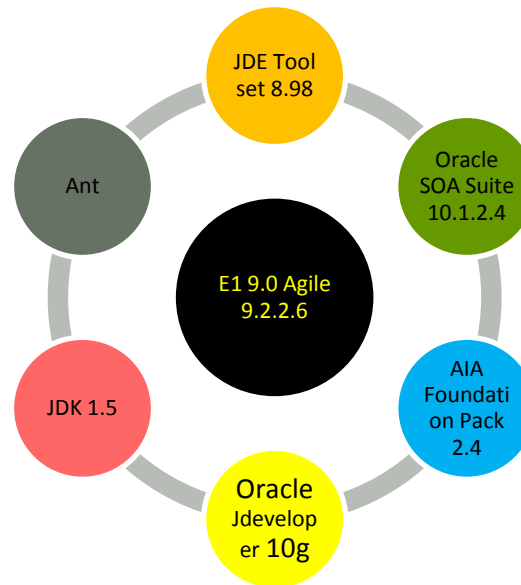


JDE E1-Agile PLM Processes

Processes Enabled	Overview
1. New Part/Product Release (PREL)	<ul style="list-style-type: none">• Release a new product parameters, its structure and Approved Manufacturer information for each component, to Engineering/Mfg
2. Change Order Release (ECO)	<ul style="list-style-type: none">• Release a new revision of an existing Product packaged as a product design update, with new and revised components, structure and manufacturer information
3. Change Order Acceptance	<ul style="list-style-type: none">• As the status of the ECO changes and moves to an implemented state in the ERP system, PLM should be notified with some changes
4. Initial Load- Item and Bill of Material (BOM)	<ul style="list-style-type: none">• Any existing ERP Items and BOMs that will be maintained in the PLM system going forward will need to be loaded into the PLM System and ERP is updated when any items or BOMs are modified.

JDE E1-Agile PLM Process Examples

- Agile ECO updated real-time with Transfer Status, Affectivity and Implementation Dates from JDE
- Agile Product Record is updated with part lead-times and on-hand balances from JDE Inventory
- Agile Product Record is updated with product/part cost information from JDE Cost Management
- Any JDE Item Master attributes can be mapped and synchronized with Agile attributes
- JDE Item balance information can be periodically synced from EnterpriseOne to JDE system



SYSTIME

SYSTIME



Largest JD Edwards EnterpriseOne® and JD Edwards World® practices globally



Over 620+ dedicated JD Edwards functional practitioners with 130+ Global implementations



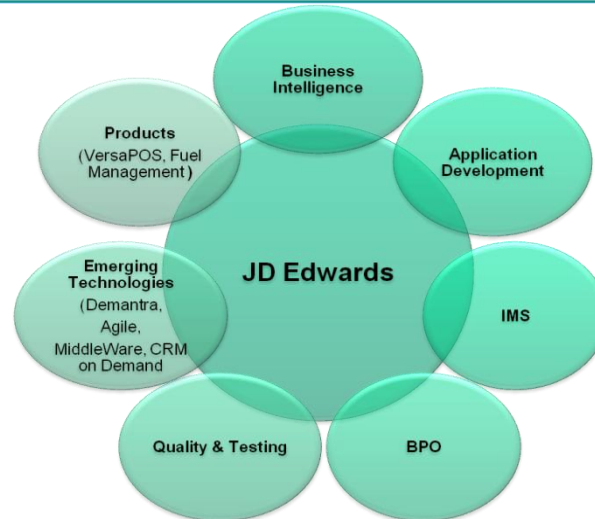
Co-developed the JDE-Agile PIP with Oracle



Over 400 customers across Americas, Europe, Middle East & Asia Pacific



Official Partner of Oracle for developing future PIPs



SYSTIME – Agile Competency

SYSTIME

Centre Of Excellence in PLM



Experienced Agile Consultants with expertise in complete implementation cycles



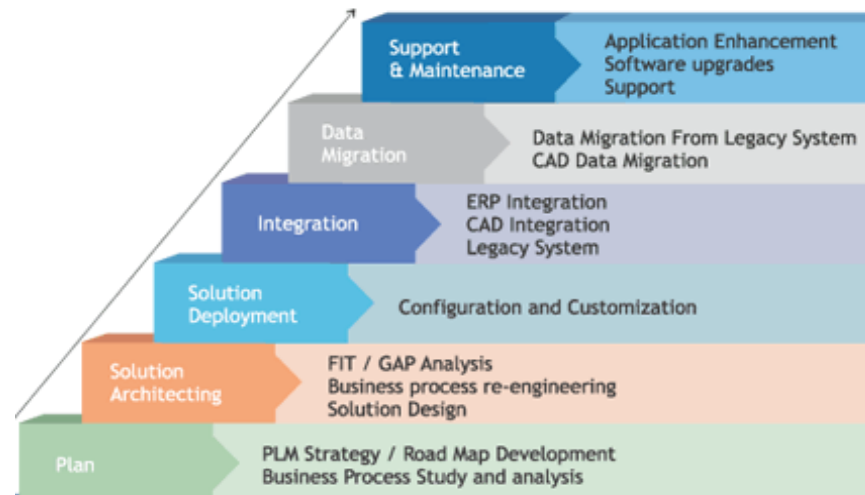
Expertise in Custom PX (Process Extension) Development



Industry experience includes Life Sciences, Pharmaceutical, Hi-Tech, and Automotive



Official Partner of Oracle for developing future PIPs



ORACLE

Oracle JD Edwards Partner of the Year 2006-2007-2008

Program **Agenda**

- AIA Overview
- AIA Foundation Pack
- JD Edwards EnterpriseOne
- JD Edwards World
- Agile PLM Integration Overview
- **Primavera P6 Integration Overview**



Oracle | Primavera Solutions

Solution	Descriptions
Primavera P6 Enterprise Project Portfolio Management	<p>An integrated global solution for prioritizing, planning, managing and executing projects, programs and portfolios.</p> <ul style="list-style-type: none">• Balance resource capacity• Plan, schedule, and control projects• Allocate best resources and track progress• Monitor and visualize project performance vs. plan• Foster team collaborative management
Primavera Contract Management (Previously known as: Contract Manager and Expedition)	<p>A document management, job cost and project controls solution for managing subcontractor performance for engineering and construction projects.</p> <ul style="list-style-type: none">• Control field contract and job cost line items• Negotiate and manage changes• Monitor subcontractor performance• Protect against claims



CSS International Engineering & Construction Practice

- Oracle Accelerate Program Participant for E&C
- Unparalleled reputation for delivery in Oracle EBS/JD Edwards space
- Exclusive partnership with Oracle to co-develop integration for Primavera and JDE EnterpriseOne
- Deep industry knowledge in Engineering & Construction
- Long-standing relationships with JDE/EBS installed base customers
- 150+ Referenceable customers

Areas of Industry Expertise:

- General Construction
- Specialty Construction
- Engineering and Design Firms
- Industrial and ETO Construction

CSS Representative Clients:

- Balfour Beatty
- Lane Construction
- Bovis
- MasTech
- US Silica
- InfraSource, Inc.
- Erickson Retirement Communities
- Hanson Building Materials
- Rea Construction
- Giant Cement
- Hilton
- Harrah's
- Tenaris
- Edward Kramer & Sons

Exclusive partnership to co-develop integration for JD Edwards EnterpriseOne

Partnership Details

- 4 Developers and 1 Designer for 8 months
- Business process design oversight and functional integration design review
- Review and authorship of TDDs for the integration of Primavera and EnterpriseOne with scope including:
- Development of Enterprise Business Services linking EnterpriseOne 9.0 to the Primavera PIP
- Code testing and migration

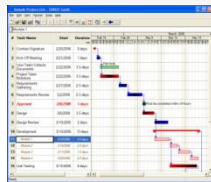
“CSS is the natural choice to develop the integration because of their industry horsepower and absolute dedication to Oracle’s enterprise suite of applications. The outcome of the integrated applications is expected to have a huge impact on construction and engineering companies helping them drive successful project execution—and that’s more important now than ever before.”

-Lyle Ekdahl, Group VP/GM
JD Edwards, Oracle Corporation.

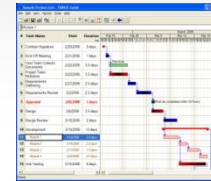
Integration Roadmap

Aggressively working on integrations !

P6 / EBS 11i10/12
JDE E1 9.0.1 Integration



P6 / PSFT 9.0/9.1
Integration



CY 2009

CY 2010

P6 / OBIA Project
Analytics



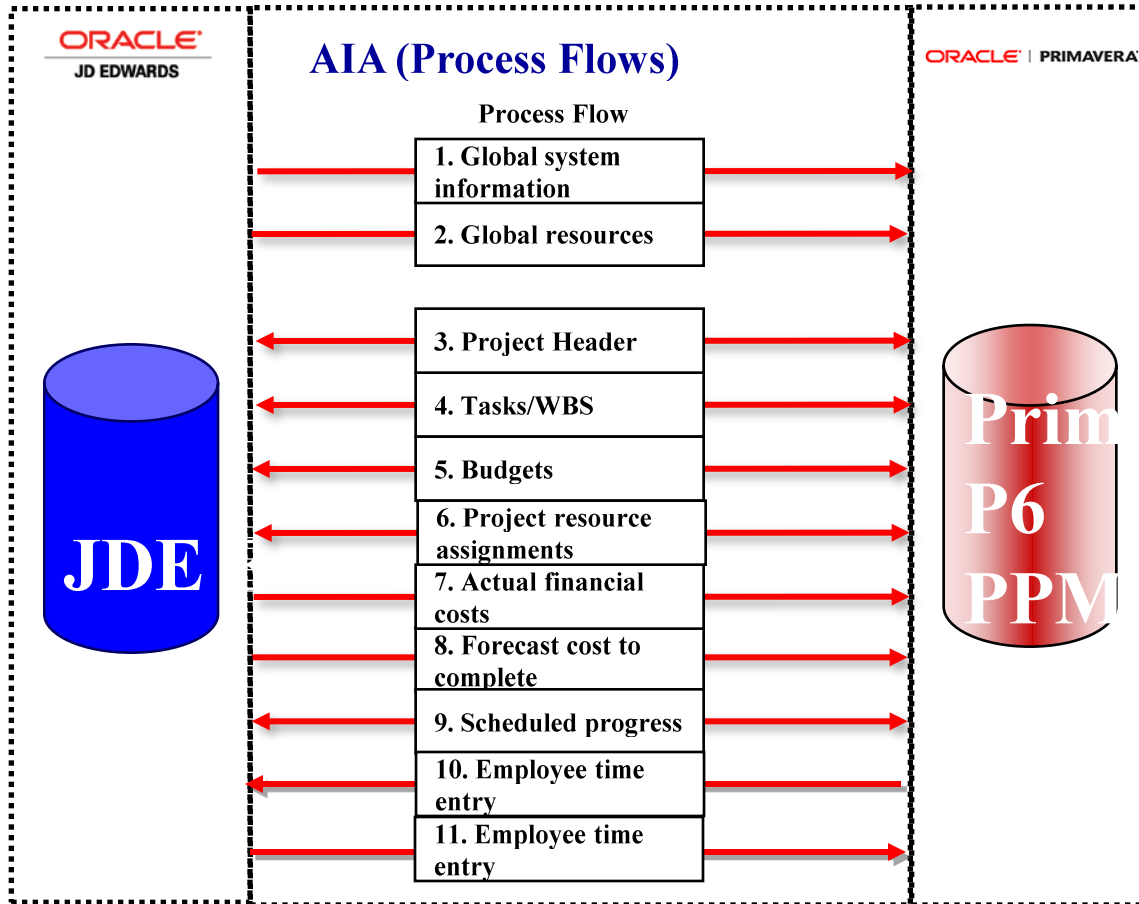
Contract Management
EBS & JDE Integration



Project Overview

- Deliver a PIP which integrates Project Management information between JDE Enterprise One and Primavera P6
- Release Details
 - JD Edwards Enterprise One 9.0.1
 - Primavera P6
 - Release Vehicle: Foundation Pack RV 2.5
- Targeted Release Date: Fall 2009
- Methodology
 - Uses Business Services for JDE E1 Inbound
 - UBE generated XML files for JDE E1 Outbound
 - AIA SOA suite middleware for integration
- Main JDE E1 product integration is with the Job Cost system

Project Management - Integration Overview



Three critical parts:

- **Global Data**
- **Project Origination & Financials**
- **Project Execution**

JDE/EBS owns the global data and financial information

P6 manages resources, schedules, and timelines

JDE E1 Overview Functional Summary

- Integration Information Ownership
 - Primavera P6 owns scheduling
 - JDE E1 owns financials (Budgets, Costs, etc.)
- Integration Scenarios
 - JDE E1 (Job Cost, Financials, HCM) to P6 PPM
 - Global System Information
 - Global Resources
 - Project
 - Project Budget
 - Project Financial/Work Breakdown Structure
 - P6 PPM to JDE E1 (Job Cost, Financials, HCM)
 - Project
 - Project Budget
 - Project Financial/Work Breakdown Structure
 - Timesheet



ORACLE IS THE INFORMATION COMPANY

ORACLE®