



Real-Time Integration Business Insight 12.2.1.1.0

Quick Start Guide

July 2016

Version 3.0

Table of Contents

INTRODUCTION TO ORACLE REAL-TIME INTEGRATION BUSINESS INSIGHT	3
ABOUT THIS DOCUMENT	3
PRE-BUILT VIRTUAL MACHINE.....	4
SOA SUITE 12.2.1.1.0 PLUS REAL-TIME INTEGRATION BUSINESS INSIGHT INSTALLATION	5
ORACLE SOA SUITE 12.2.1.1.0 QUICKSTART INSTALLATION.....	5
DOWNLOAD AND APPLY PATCH 23558099.....	6
CONFIGURE THE INSIGHT DOMAIN	6
<i>Compact SOA Suite 12.2.1.1.0 domain with Insight.....</i>	<i>6</i>
Install Required Schemas with the Repository Creation Utility	6
Configure the Compact Domain.....	6
<i>Start the Insight server</i>	<i>7</i>
<i>Important log files.....</i>	<i>7</i>
SET UP INSIGHT DEMO USERS.....	8
ASTRATEQ HELP DESK TUTORIAL	11

Introduction to Oracle Real-Time Integration Business Insight

Oracle Real-Time Integration Business Insight (also known as Insight in short) is designed for business users to model, collect and monitor business level metrics. It comes fully integrated with Oracle SOA Suite and Oracle Service Bus.

Oracle Real-Time Integration Business Insight puts the business owner in control of the content, timing and format of metrics they need to make informed decisions daily. By simply identifying the key points within their business integrations, stakeholders immediately have access to detailed and actionable data, in real-time, with no costly engineering engagements or production redeployments.

For more information, please visit the [Oracle Real-Time Integration Business Insight product page](#).

About this document

This document describes how to install and setup a **development** environment for Oracle Real-Time Integration Business Insight 12.2.1.1.0. The result will be a **compact domain** - a developer domain consisting of a single administration server and no managed servers.

Please consult [Installing and Configuring Oracle SOA Suite and Business Process Management](#) and [Installing and Configuring Oracle Service Bus](#) for directions on how to setup a production environment.

The document [Oracle® Fusion Middleware Installing SOA Suite and Business Process Management Suite Quick Start for Developers](#) describes the setup of **SOA Suite** development environments. The following sections explain the additional steps needed to add the Insight server and the SOA and Service Bus Insight agents.

Please also ensure to consult the [Known Issues for Oracle Real-Time Integration Business Insight](#) before starting your installation.

Pre-built Virtual Machine

The [Pre-built Virtual Machine for SOA Suite 12.2.1.1.0](#) on the Oracle Technology Network includes Real-Time Integration Business Insight for evaluation or testing.

Download the [Introduction and Readme document](#) for detailed instructions on downloading and importing the VirtualBox image.

The image has been pre-configured with an Insight compact domain, among several other domains.

Complete the steps outlined in [Real-Time Integration Business Insight Tutorial setup for VirtualBox image](#) before starting the [AstraTeq Help Desk Tutorial](#).

SOA Suite 12.2.1.1.0 plus Real-Time Integration Business Insight Installation

If you prefer to install Insight and configure a compact domain on your own laptop, please follow the steps below.

Oracle SOA Suite 12.2.1.1.0 QuickStart installation

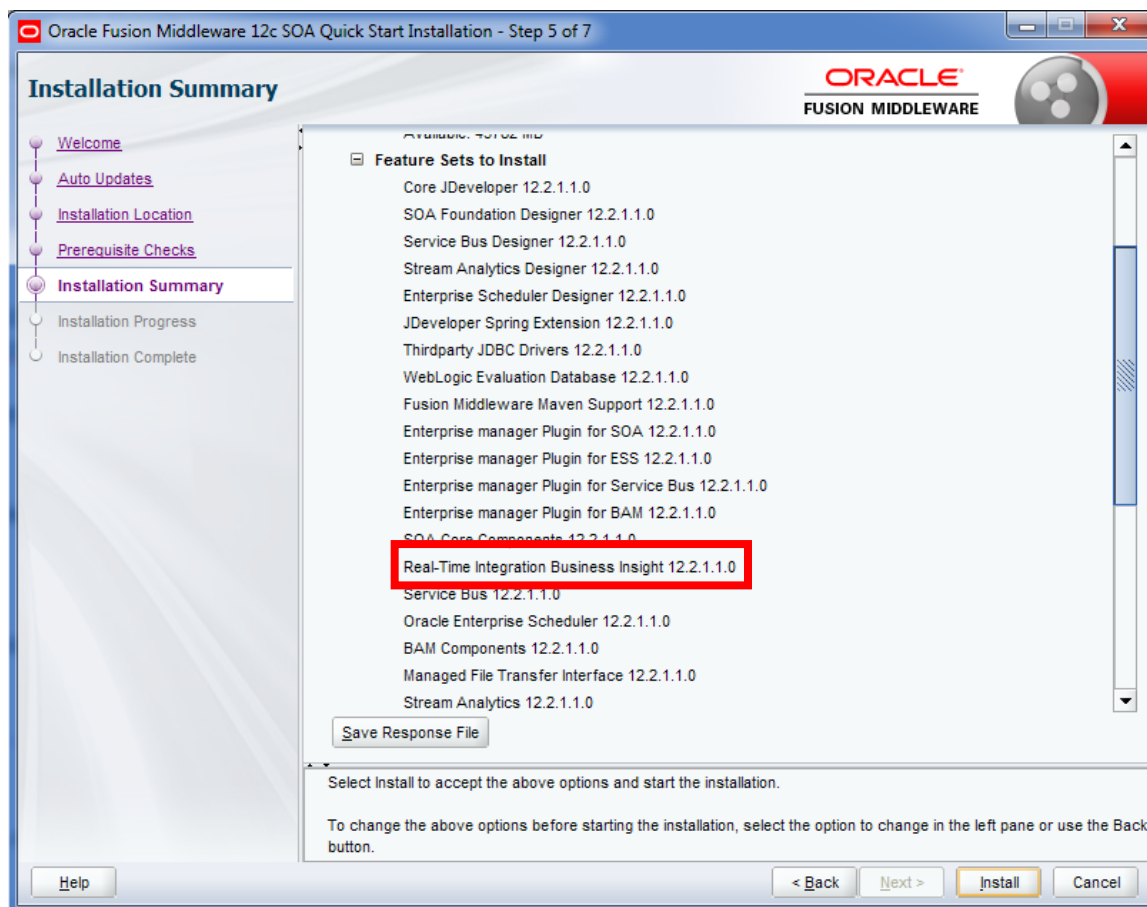
Make sure to carefully review [Verifying Certification, System Requirements, and Interoperability](#) before you start.

From this release onwards, Insight is included in the SOA Suite Quick Start and Production installers.

Please make sure to read through the details in [Part I Preparing to Install Quick Start](#) before you get started with the installation.

Follow the steps in [Installing Oracle SOA Suite Quick Start for Developers](#) to install SOA Suite 12.2.1.1.0, including Insight.

Step 5 shows a list of Feature Sets to be installed. This includes Real-Time Integration Business Insight 12.2.1.1.0:



Remember to uncheck “Start JDeveloper” before you finish the installation.

Download and apply Patch 23558099

Download patch 23558099 from [MyOracleSupport](#) and apply the patch to your Insight installation, following the steps in the patch readme.

This patch fixes an issue with mapping Insight milestones to Oracle Service Bus components.

Configure the Insight domain

This section describes the configuration of the compact domain with SOA Suite 12.2.1.1.0 and Insight.

Compact SOA Suite 12.2.1.1.0 domain with Insight

As mentioned before, a compact domain is a setup with an admin server only, with SOA components, like soa-infra, Service Bus and BAM all deployed to the one server. It is different from a WebLogic integrated server as it uses Oracle DB instead of Java DB, and is not controlled by JDeveloper.

For Insight, we will create a SOA domain (which includes Service Bus) with the Insight server, the SOA agent and the Service Bus agent.

The following link describes a SOA compact domain setup: [Configuring a Compact Domain for Oracle SOA Suite](#).

Install Required Schemas with the Repository Creation Utility

No change is needed here as all DB scripts needed for insight are already included in the SOA Suite setup. Follow the steps outlined in [5.3 Installing Required Schemas](#).

Configure the Compact Domain

Follow the steps outlined in [5.4 Configuring a Compact Domain](#) with one small difference.

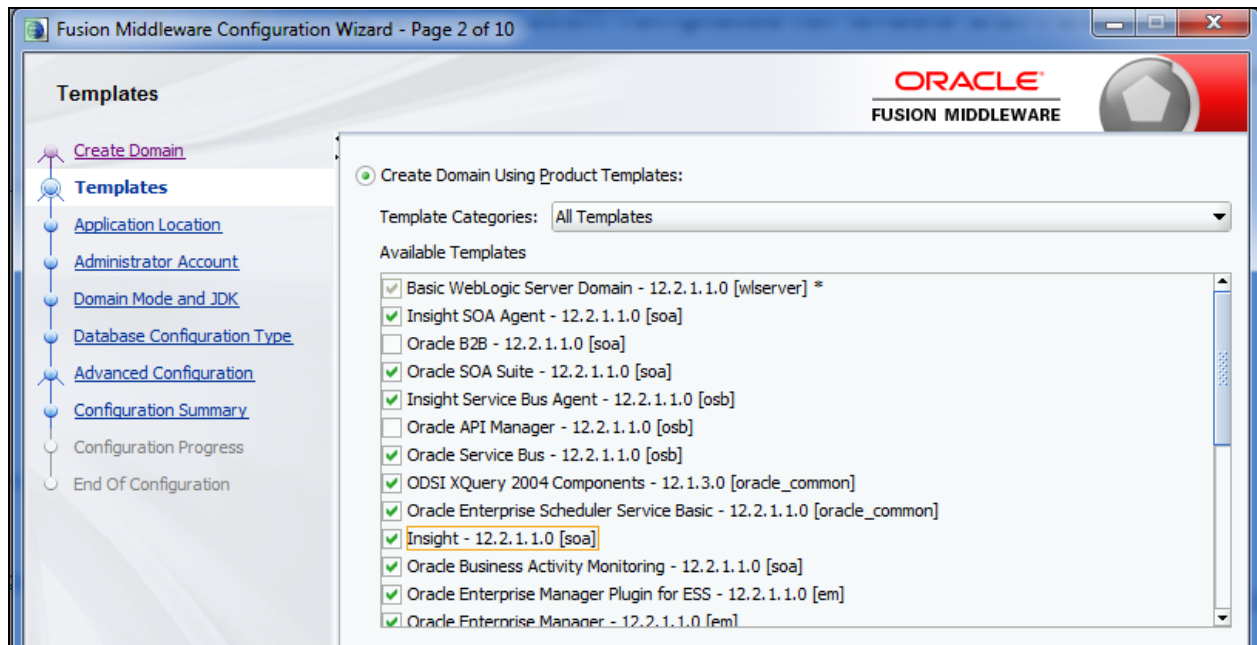
When selecting the templates in section [5.4.3 Selecting Configuration Templates for Oracle SOA Suite Quick Start](#) add the templates needed for the Insight Server, SOA agent and Service Bus agent.

Select the following templates **in addition** to the templates described in [5.4.3 Selecting Configuration Templates for Oracle SOA Suite Quick Start](#):

- Insight SOA Agent 12.2.1.1.0 [soa]
- Insight Service Bus Agent 12.2.1.1.0 [osb]
- Insight 12.2.1.1.0 [soa]

All other dependant templates are automatically selected.

The screen looks like this:



All other steps remain unchanged.

Start the Insight server

When the configuration wizard is complete, navigate to your compact domain's home and start the administrator server with the following command:

UNIX:

```
cd $DOMAIN_HOME/bin
./startWebLogic.sh
```

Windows:

```
cd %DOMAIN_HOME\bin
startWebLogic.cmd
```

You know that the administrator server is running when you see the following output:

```
Server state changed to RUNNING.
```

Important log files

If you run into any unexplained issues, consult the following log files in `$DOMAIN_HOME/servers/AdminServer/logs/`

- AdminServer.log
- AdminServer-diagnostic.log
- AdminServer-insight-diagnostic.log

Set up Insight Demo Users

Insight has a variety of user personas. Each user has a defined set of roles and the areas of the application the user can access varies based on the permissions attached to the user role.

The following users will be created for demos and the tutorials. Please refer to [User Personas](#) for a description of the personas used within Insight.

- **Susan - Model Creator:** The person creating the model. In normal life, Susan would assign model permissions to other users. We skipped this step in the tutorial for simplicity.
- **Nina - Business User:** The business user has the functional knowledge of the business use case and will create milestone and indicators using business language, irrespective of the implementation.
- **Karl - Integration Architect:** The integration architect has an understanding of the implementation of the application. He defines the mapping of milestones to the appropriate location in the implementation and the extraction of indicators.
- **John - Business Owner:** The business owner has access to the real-time business data provided by the consoles and defines custom dashboards for a tailored view of the data.
- **Emily - Administrator:** The administrator manages the Insight application itself and creates connections to the implementation to enable mapping of the models.

We also gave Nina and Karl Business Owner privileges, so that they are able to test the consoles of the model they are creating. They may not have those permissions in a production system.

In order to set up the users above, follow these steps:

- Download **InsightDemoUserCreation.zip** from the [OTN Insight tutorial page](#) and unzip into a folder of your choice
- Open a terminal window in the folder above
- `cd bin`
- edit **insight.properties** and change the properties to reflect your own environment
- If you're on windows, rename **build.xml** to **build_unix.xml** and rename **build_win.xml** to **build.xml**
- Set the following environment variables (change the syntax if necessary, based on your system):
- UNIX
 - `setenv MW_HOME= <Middleware HOME of the environment>`
 - `setenv JAVA_HOME= <Location of JAVA HOME>`
 - `setenv ANT_HOME=$MW_HOME/oracle_common/modules/org.apache.ant_1.9.2`
 - `setenv PATH=$JAVA_HOME/bin:$ANT_HOME/bin:$PATH`
- Windows
 - `set MW_HOME=<Middleware HOME of the environment>`
 - `set JAVA_HOME=<Location of JAVA HOME >`

- set ANT_HOME=%MW_HOME%\oracle_common\modules\org.apache.ant_1.9.2
- set PATH=%JAVA_HOME%\bin;%ANT_HOME%\bin;%PATH%
- execute ant createInsightDemoUsers

You should see output like the following for each user:

createUserAndAssign:

```
[mkdir] Created dir: /scratch/sgeib/InsightDemoSeeding/procmon-fod/user/InsightAdministrator
[echo] Creating : InsightAdministrator:InsightAdmin
[copy] Copying 1 file to /scratch/sgeib/InsightDemoSeeding/procmon-fod/user/InsightAdministrator
[exec]
[exec] Initializing WebLogic Scripting Tool (WLST) ...
[exec]
[exec] Welcome to WebLogic Server Administration Scripting Shell
[exec]
[exec] Type help() for help on available commands
[exec]
[exec] Connecting to t3://localhost:7001 with userid weblogic ...
[exec] Successfully connected to Admin Server "AdminServer" that belongs to domain "insight_domain".
[exec]
[exec] Warning: An insecure protocol was used to connect to the server.
[exec] To ensure on-the-wire security, the SSL port or Admin port should be used instead.
[exec]
[exec] Already in Config Runtime
[exec]
[exec] lookup DefaultAuthenticator
[exec] create user InsightAdministrator
[exec]
[exec]
[exec] Exiting WebLogic Scripting Tool.
[exec]
```

aassignRoleToUser:

```
[mkdir] Created dir: /scratch/sgeib/InsightDemoSeeding/procmon-fod/user/InsightAdministrator/InsightAdmin
[copy] Copying 1 file to /scratch/sgeib/InsightDemoSeeding/procmon-fod/user/InsightAdministrator/InsightAdmin
[exec]
[exec] Initializing WebLogic Scripting Tool (WLST) ...
[exec]
[exec] Welcome to WebLogic Server Administration Scripting Shell
[exec]
[exec] Type help() for help on available commands
[exec]
[exec] Connecting to t3://localhost:7001 with userid weblogic ...
[exec] Successfully connected to Admin Server "AdminServer" that belongs to domain "insight_domain".
[exec]
[exec] Warning: An insecure protocol was used to connect to the server.
[exec] To ensure on-the-wire security, the SSL port or Admin port should be used instead.
[exec]
[exec] grant app role InsightAdministrator with InsightAdmin for appStripe insight
[exec] Location changed to domainRuntime tree. This is a read-only tree
[exec] with DomainMBean as the root MBean.
[exec] For more help, use help('domainRuntime')
```

[exec]

[exec]

[exec]

[exec] Exiting WebLogic Scripting Tool.

[exec]

AstraTeq Help Desk Tutorial

The AstraTeq Help desk tutorial guides you step by step through the creation of an Insight model as well as interpreting pre-configured and creating custom dashboards.

Download the **Help Desk Tutorial resources zip file** from the [Insight tutorials page](#), complete the steps outlined in [Real-Time Integration Business Insight Tutorial setup for native install](#) before starting the [AstraTeq Help Desk Tutorial](#).