

Power Pack Adjust Data Extension

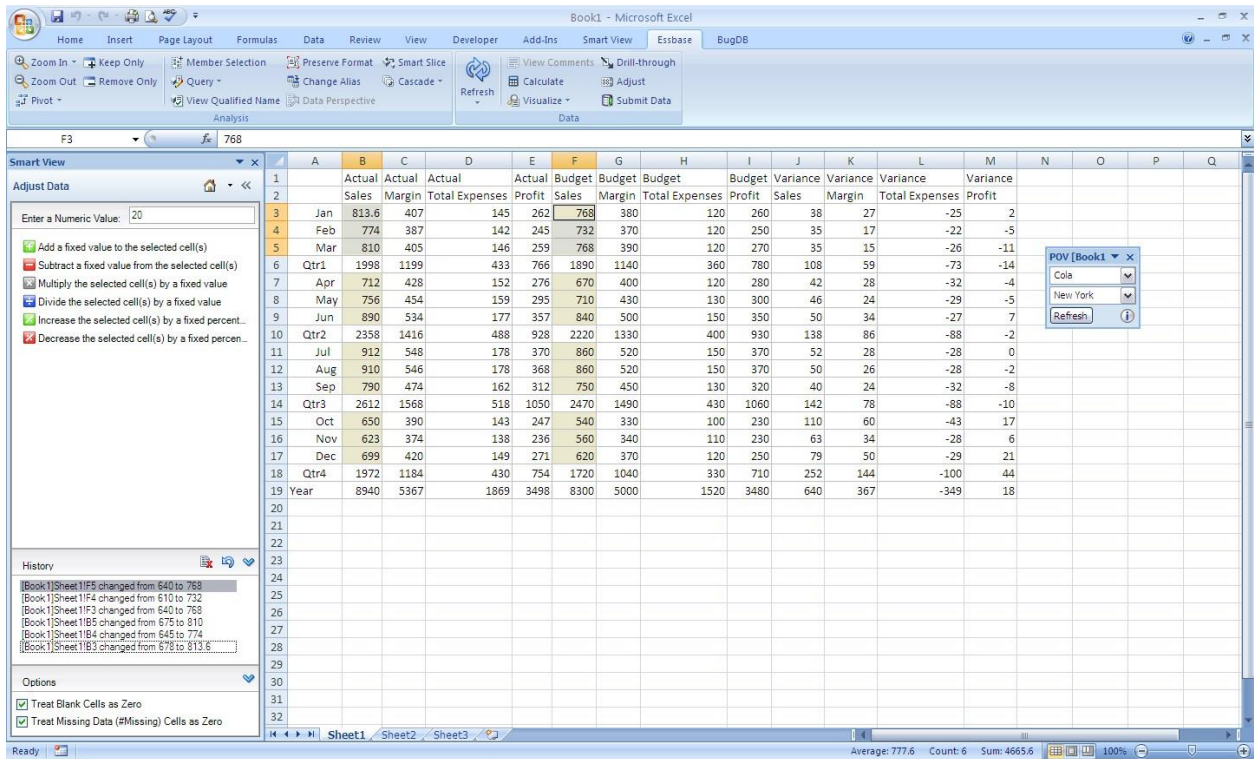
Installation

Launch (double click) the “.svext” installation on a Windows machine with Smart View 11.1.2.5.210 or above installed along with Office 2007 and Office 2010. The extension will be installed in the user’s application data folder with no additional user interaction required unless the installation fails.

Note: Smart View 11.1.2.5.210 or above is required for this extension to work.

Usage

The Power Pack Adjust Data extension allows users to quickly make adjustment to data in a cell or range of cells. This panel will allow you to work within the sheet while making simple 1 click adjustments using common math operations. To access this panel, from the Smart View Panel Home dropdown, select ‘Adjust Data’.



This feature will work with any numeric value in a cell regardless if it is connected to a Smart View provider or not.

