

SQL and PL/SQL Experts Panel

Jagan Athreya, Oracle

Tom Kyte, Oracle

Graham Wood, Oracle

Steven Feuerstein, Oracle

September 28–
October 2, 2014
San Francisco

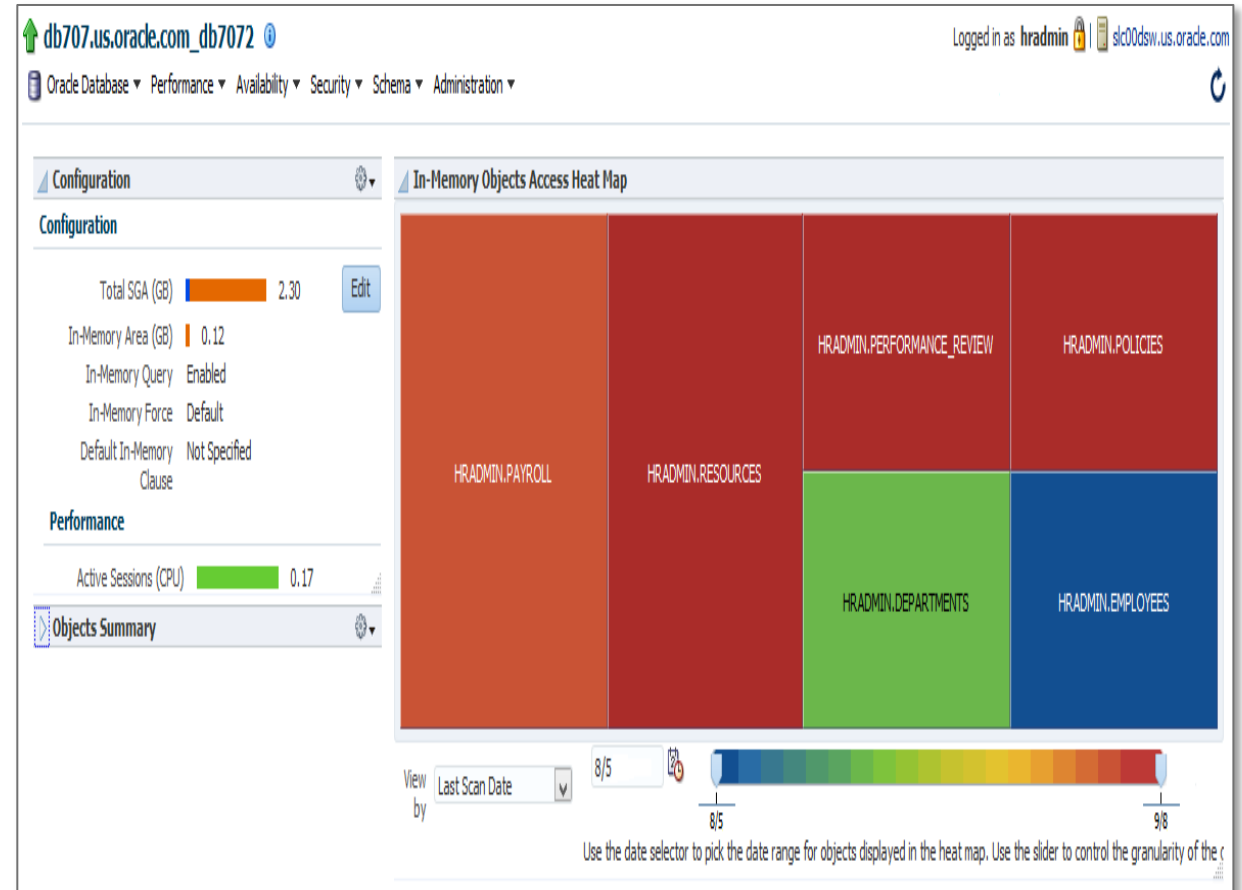
ORACLE
OPEN
WORLD

ORACLE

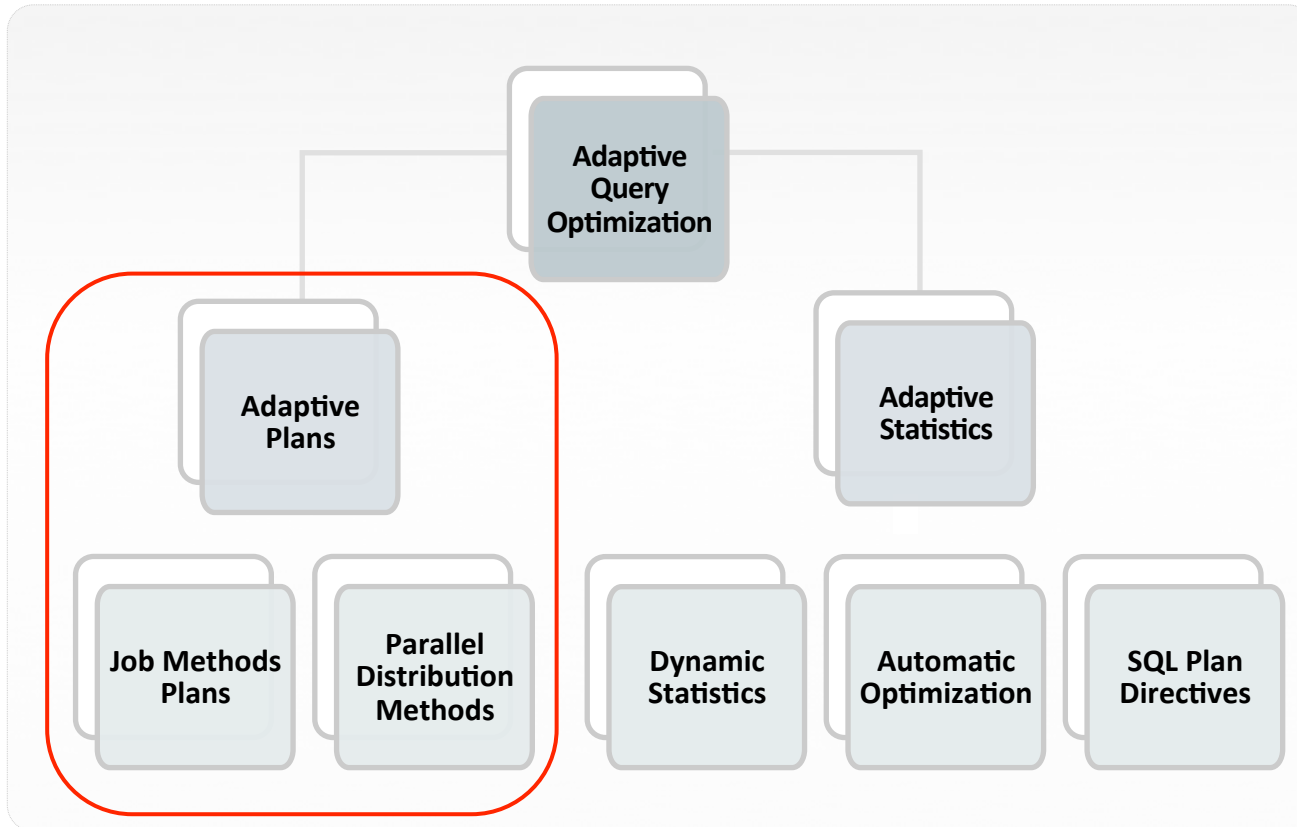
Copyright © 2014, Oracle and/or its affiliates. All rights reserved. |

Oracle Database In-Memory Central

- Analyze objects in In-Memory Column Store
 - View in-memory space allocation and frequency of access
- Monitor/manage In-Memory Column Store configuration
- Integrated with ASH Analytics for performance analysis

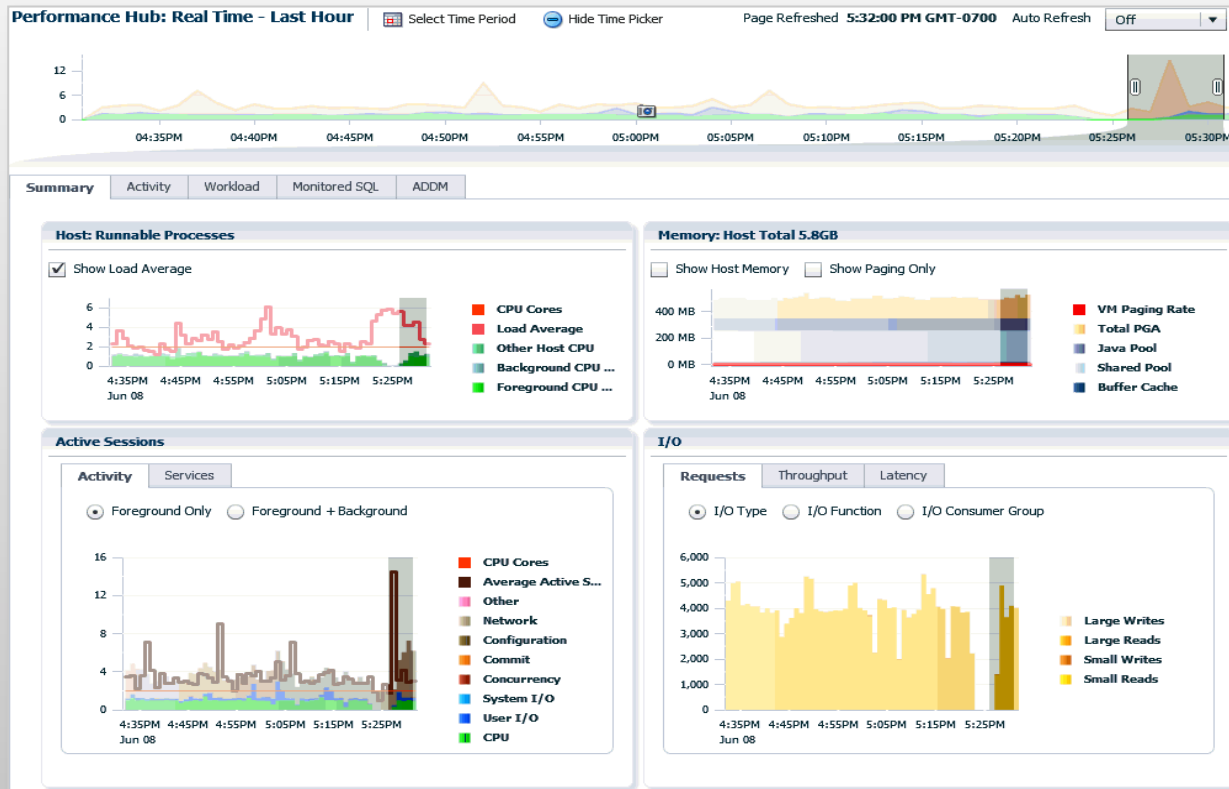


Real-Time Monitoring of Adaptive Queries



- Oracle Database 12c's Adaptive Query Optimization improves query performance by dynamically optimizing execution plans at run-time
- Real-time SQL Monitoring enhanced to support Adaptive Plans
- Displays run-time and final execution plans
- Helps understand how plan evolved by showing discrepancies in expected and actual rows processed
- Information updated dynamically as query progresses
- Indicates plan is adaptive, and show current Status: "Resolving" or "Resolved"

Performance Hub Reports





- New interactive report for analyzing AWR data
- Performance Hub report generated from SQL*Plus
 - @\$ORACLE_HOME/rdbms/admin/perfhubrpt.sql
 - OR calling `dbms_perf.report_perfhub(...)` function
- Single view of DB performance
- ADDM, SQL Tuning, Real-Time SQL Monitoring, ASH Analytics
- Switch between ASH analytics, workload view, ADDM findings and SQL monitoring seamlessly
- Supports both real-time & historical mode
- Historical view of SQL Monitoring reports

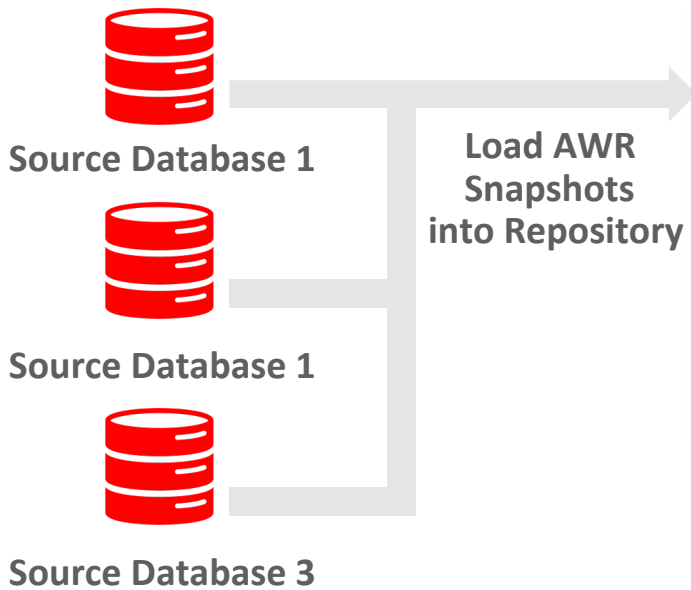
AWR Warehouse: Features

Administrators use historical AWR reports in several database diagnostic features





 Performance Home
 ASH Analytics
 AWR Report

 Compare Period ADDM
 Compare Period Report



Central AWR Repository

-  Database 1 Snapshots
-  Database 2 Snapshots
-  Database 3 Snapshots
-
-  Database n Snapshots

- Central warehouse configured for long term AWR data retention
- Historical and ongoing AWR snapshots collected from databases enabled for AWR warehouse
- ETL jobs moves snapshots from source databases into AWR warehouse
- Retention period configurable for weeks, months, years or forever (default)