

# SYSTEM MONITORING PLUG-IN SYBASE<sup>®</sup> ADAPTIVE SERVER<sup>®</sup> ENTERPRISE



## KEY FEATURES

- Out-of-the-box availability and performance monitoring
- Detailed configuration information collection and analysis
- Out-of-the-box reports for easier problem diagnosis, trend analysis and capacity planning.
- Advanced monitoring and event management features:
  - Blackouts
  - Corrective Actions
  - Notifications
  - Metric Extensions
  - Monitoring Templates
  - Dashboards
- Top resource monitoring and analytics

Oracle Enterprise Manager is Oracle's integrated enterprise IT management product line, providing the industry's first complete cloud lifecycle management solution. Oracle Enterprise Manager's Business-Driven IT Management capabilities allow you to quickly set up, manage and support enterprise clouds and traditional Oracle IT environments from applications to disk. Enterprise Manager allows customers to achieve best service levels for traditional and cloud applications through management from a business perspective including for Oracle Fusion Applications, provide maximum return on IT management investment through the best solutions for intelligent management of the Oracle stack and engineered systems and gain unmatched customer support experience through real-time integration of Oracle's knowledgebase with each customer environment.

The Oracle Enterprise Manager System Monitoring Plug-in for Sybase Adaptive Server Enterprise delivers comprehensive availability, performance and configuration information for Sybase ASE. By combining Sybase ASE monitoring with the richest and most comprehensive management of Oracle systems, Enterprise Manager significantly reduces the cost and complexity of managing IT environments that have a mix of Sybase ASE and Oracle technologies. Administrators running packaged and custom applications on top of Oracle systems and Sybase ASE can now centralize all of the monitoring information in the Enterprise Manager Cloud Control, model and view the complete topology of their applications, and perform comprehensive root cause analysis. Database administrators managing Oracle Databases and Sybase ASE can perform proactive monitoring and detailed configuration analysis for Sybase ASE, while consolidating all of the management information about their database environment in the Enterprise Manager Console.

## Realize Immediate Value through Out-of-Box Availability and Performance Monitoring

The System Monitoring Plug-in for Sybase ASE automatically collects a comprehensive set of availability and performance metrics with pre-defined thresholds, immediately alerting administrators of any issues. This allows administrators to derive instant value, while giving

SYSTEM MONITORING PLUG-IN FOR  
SYBASE ADAPTIVE SERVER  
ENTERPRISE

them the flexibility to fine-tune thresholds according to their specific operational requirements. The plug-in provides non-stop monitoring of over 450 key metrics including Sybase ASE status, performance, I/O, cache, CPU statistics, locks and processes, alert log, database backups and jobs, space usage, users and roles.

### KEY BENEFITS

- Comprehensive, top-down visibility into your Sybase and Oracle infrastructure
- Correlate availability and performance problems across heterogeneous IT components
- Enhance service modeling and perform comprehensive root cause analysis
- Increase operational efficiencies

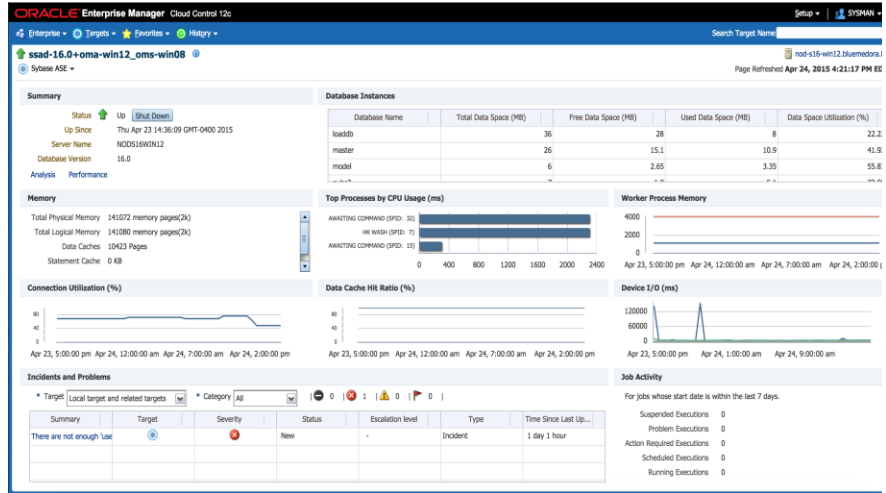


Figure 1. Sybase ASE – Home Page.

In addition to real-time monitoring of performance metrics for Sybase ASE, Enterprise Manager also stores the monitoring information in the management repository, thereby enabling administrators to analyze performance through various historical views (these include Real Time Refresh/Last 24 Hours/ Last 7 Days/ Last 31 Days/etc) and facilitating strategic tasks such as trend analysis and reporting.

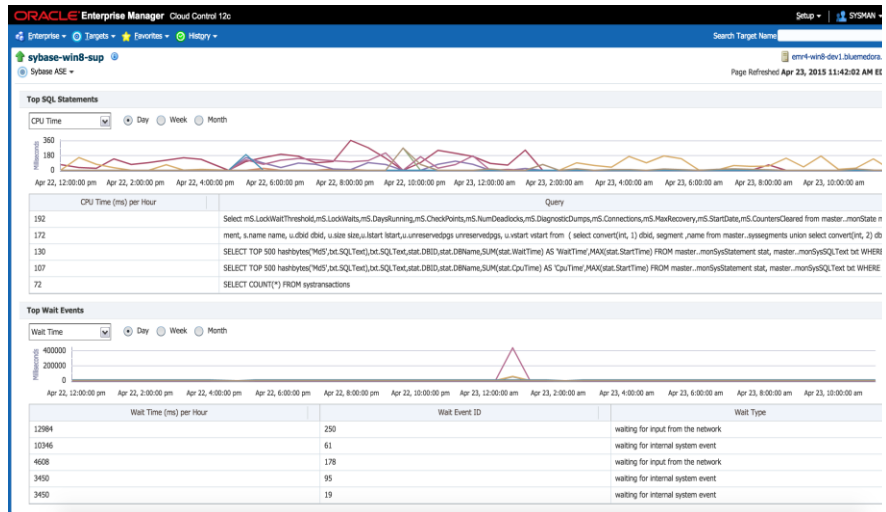


Figure 2. Sybase ASE – Analysis Page.

A new feature to the Plug-in for Sybase ASE is the Performance page. Use the performance page to efficiently view history and trends of key performance metrics such as Connection, Memory, and Utilization. This page makes excellent use of Oracle Enterprise Manager's graph and charting tools to give insight into these KPI trends.

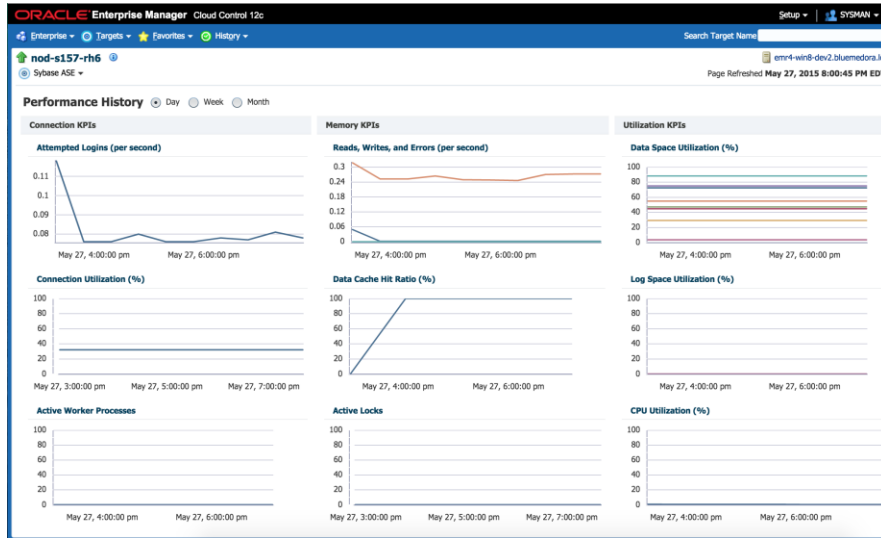


Figure 3. Sybase ASE – Performance Page.

**RELATED PRODUCTS**

- Management Plug-ins
  - System Monitoring Plug-in for Non-Oracle Databases
  - System Monitoring Plug-in for Non-Oracle Middleware
  - System Monitoring Plug-in for Storage
- Management Connectors

Detailed information on these products can be located at <http://www.oracle.com/enterprise-manager>.

To further aid administrators with critical tasks such as problem diagnosis, trend analysis and capacity planning, the System Monitoring Plug-in for Sybase ASE includes seventeen out-of-box reports, summarizing key information about Sybase ASE performance, resource consumption and configuration.

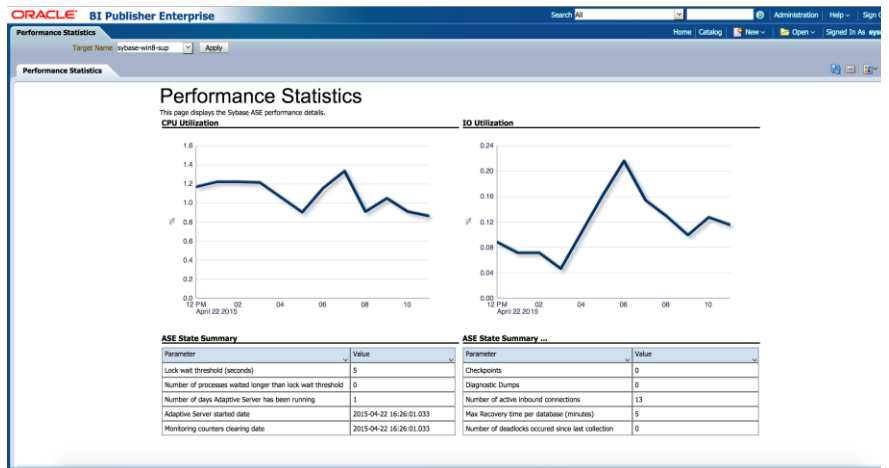


Figure 4. Sybase ASE – Performance Statistics Report.

These reports are easily accessible from the Sybase ASE Home page in the Enterprise Manager Console and from Business Intelligence Publisher (Enterprise Manager’s powerful reporting framework), enabling administrators to schedule, share, and customize reports to fit their operations needs.

**Apply Oracle Enterprise Manager’s Powerful Monitoring and Event Management Features to Sybase ASE**

The System Monitoring Plug-in for Sybase ASE leverages Oracle Enterprise Manager’s powerful monitoring and event management features for Sybase ASE monitoring, thereby delivering a robust monitoring solution through automation, standardization and a “manage many-as-one” approach. Key features include:

- **Blackout Periods:** prevent unnecessary alerts from being raised during

scheduled maintenance operations, such as ASE backup or hardware upgrade.

- **Monitoring Templates:** simplify the task of standardizing monitoring settings across the entire Sybase ASE environment, by allowing administrators to specify the monitoring settings (metrics, thresholds, metric collection schedules and corrective actions) once and applying them to any number of ASE instances.
- **Metric Extensions:** allow administrators to collect and monitor parameters specific to their applications.
- **Corrective Actions:** ensure that routine responses to alerts are automatically executed, thereby saving administrators time and ensuring problems are dealt with before they noticeably impact users.
- **Incident Rules, Methods and Schedules:** define when and how administrators should be notified about critical problems with their applications, ensuring quicker problem resolution.
- **Groups / Systems:** significantly simplify management of large numbers of components, allowing administrators to “manage many-as-one”. By combining Sybase ASE instances in groups, or including them in heterogeneous groups or systems, administrators can benefit from a wealth of group management features, such as ability to proactively monitor availability and alerts of all group members via the System Monitoring Dashboard.

## Lower Costs through Knowledge: Know What You Have and What Changed

Tracking configurations is one of the most time-consuming and difficult tasks administrators face on a daily basis. Being able to quickly view a detailed configuration snapshot, analyze historical changes and enforce standardization between systems is key to diagnostics, auditing, compliance, and making solid business decisions.

System Monitoring Plug-in for Sybase ASE simplifies these tasks by automatically collecting detailed configuration information about Sybase ASE, including database version, system details, backup/recovery parameters, distributed I/O, and physical memory to name a few. This information is collected daily and stored in the management repository.

The screenshot shows the Oracle BI Publisher Enterprise Configuration report for the target 'sybase-win8-sup'. The report is titled 'Configuration' and provides the following details:

- Sybase ASE Version:** Adaptive Server Enterprise/15.7.0/EBF 20374 SMP ESD#02 /P/X64/Windows Server/ase157esd2/3109/64-bit/OPT/Sat Jul 07 01:16:39 2012
- System Listeners:**

ASE Server Name and Port	Network Protocol
sybase-win8-sup 2500	nlnwsock
- Information About Databases:**

Database Name	Owner Name	Database Size	Date Of Creation	Database ID	Status
master	sa	26.0 MB	Sep 10, 2013	1	full
model	sa	6.0 MB	Sep 10, 2013	3	full
pubs2	sa	7.0 MB	Feb 11, 2015	4	full
pubs3	sa	6.0 MB	Sep 10, 2013	5	full
sybmgmtdb	sa	75.0 MB	Sep 10, 2013	31515	full
sybystemdb	sa	12.0 MB	Sep 10, 2013	31513	full
sybystemprocs	sa	172.0 MB	Sep 10, 2013	31514	full
tempdb	sa	106.0 MB	Apr 22, 2015	2	no_recovery
- Installed Scripts:**

Script Name	Version	Status
QDBC MDA Scripts	15.7.0.403.1011/Fri Jul 06 UTC 00:41:49 2012	Complete
OLEDB MDA Scripts	15.7.0.403.1011/Fri Jul 06 UTC 00:16:26 2012	Complete

Figure 5. Sybase ASE Configuration Report.

In addition, Enterprise Manager automatically tracks all changes to the Sybase ASE configuration, helping administrators answer key questions about what changed, who is responsible for the change, and when the change was made. System Monitoring Plug-in for Sybase ASE also enables enterprise-wide configuration comparisons of Sybase ASE instances, allowing administrators to quickly and easily pinpoint potential differences. This helps to keep systems synchronized and to reduce “configuration drift”. In addition, it simplifies investigations into why systems that are presumed to be identical, are behaving differently.

### Centralize All of the Monitoring Information in a Single Console

The System Monitoring Plug-in for Sybase ASE provides administrators managing Oracle systems and Sybase ASE with a consolidated view of the entire enterprise, enabling them to monitor and manage all of their components from a central place. Having such an integrated tool reduces the total cost of ownership by eliminating the need to manually compile critical information from several different tools, thus streamlining the correlation of availability and performance problems across the entire set of IT components.

In addition, the System Monitoring Plug-in for Sybase ASE complements Oracle Enterprise Manager’s existing plug-in support for host systems providing administrators with more depth and greater ability to view Sybase ASE operations directly in the context of operating system activity.

### Learn More





For more information about this and Heterogeneous Management, visit <http://www.oracle.com/technetwork/oem/extensions>



#### CONTACT US

For more information about System Monitoring Plug-in for Sybase Adaptive Server Enterprise, visit [oracle.com](http://oracle.com) or call +1.800.ORACLE1 to speak to an Oracle representative.

#### CONNECT WITH US

-  [blogs.oracle.com/oracle](http://blogs.oracle.com/oracle)
-  [facebook.com/oracle](http://facebook.com/oracle)
-  [twitter.com/oracle](http://twitter.com/oracle)
-  [oracle.com](http://oracle.com)

#### Hardware and Software, Engineered to Work Together

Copyright © 2015, Oracle and/or its affiliates. All rights reserved. This document is provided for information purposes only, and the contents hereof are subject to change without notice. This document is not warranted to be error-free, nor subject to any other warranties or conditions, whether expressed orally or implied in law, including implied warranties and conditions of merchantability or fitness for a particular purpose. We specifically disclaim any liability with respect to this document, and no contractual obligations are formed either directly or indirectly by this document. This document may not be reproduced or transmitted in any form or by any means, electronic or mechanical, for any purpose, without our prior written permission.

Oracle and Java are registered trademarks of Oracle and/or its affiliates. Other names may be trademarks of their respective owners.

Intel and Intel Xeon are trademarks or registered trademarks of Intel Corporation. All SPARC trademarks are used under license and are trademarks or registered trademarks of SPARC International, Inc. AMD, Opteron, the AMD logo, and the AMD Opteron logo are trademarks or registered trademarks of Advanced Micro Devices. UNIX is a registered trademark of The Open Group. 0815

