

## Know Issues and FAQs for SampleApp v406

### CONTENTS

Contents .....	1
Known issues .....	1
1. database password expiry with user system .....	1
2. Smartview client.....	3
3. SQL DEVELOPER SHORTCUT .....	3
4. Sampleapp launch pad usernames and urls.....	3
FAQS .....	4
1. COPY and paste into SampleAPP vnc .....	4
INTERNAL ONLY .....	5

### KNOWN ISSUES

#### 1. DATABASE PASSWORD EXIPRY WITH USER SYSTEM

The database user “**system**” password has expired on your SampleAppv406 virtual appliance. This will NOT affect normal demo operations as the database starts and functions as expected when using the 0.Startdb script(sampleapp uses **SYS** to start the db).

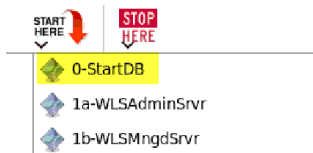
For users that require direct access to the database via ./sqlplus or sqldeveloper with user **system** to either the pdborcl or orcl databases please follow the steps below

#### Affected by this issue

- sqlplus system/Admin123@pdborcl password is expired
- sqlplus system/Admin123@orcl password is expired

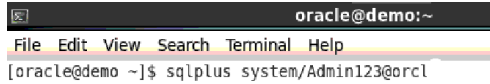
Note: the user SYS on SampleAppv406 does not require any attention

- Start the database from the Start Menu
  - Note: starting the db via the start menu continues to work and allows you to use the SA 406 image in its entirety along with all OOB functionality



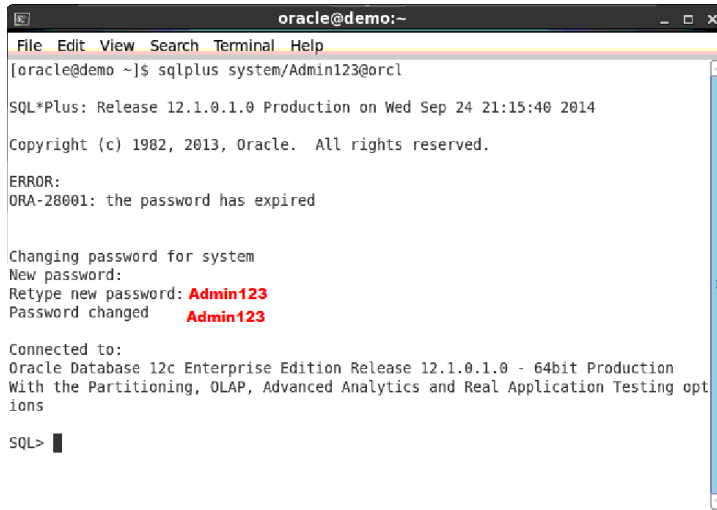
#### Applying the FAQ

- Open a terminal window and type the following command  
Sqlplus system/Admin123@orcl and click enter



```
oracle@demo:~
File Edit View Search Terminal Help
[oracle@demo ~]$ sqlplus system/Admin123@orcl
```

- You will be prompted to enter a new password as shown below
  - Use Admin123 as your new password



```
oracle@demo:~
File Edit View Search Terminal Help
[oracle@demo ~]$ sqlplus system/Admin123@orcl

SQL*Plus: Release 12.1.0.1.0 Production on Wed Sep 24 21:15:40 2014

Copyright (c) 1982, 2013, Oracle. All rights reserved.

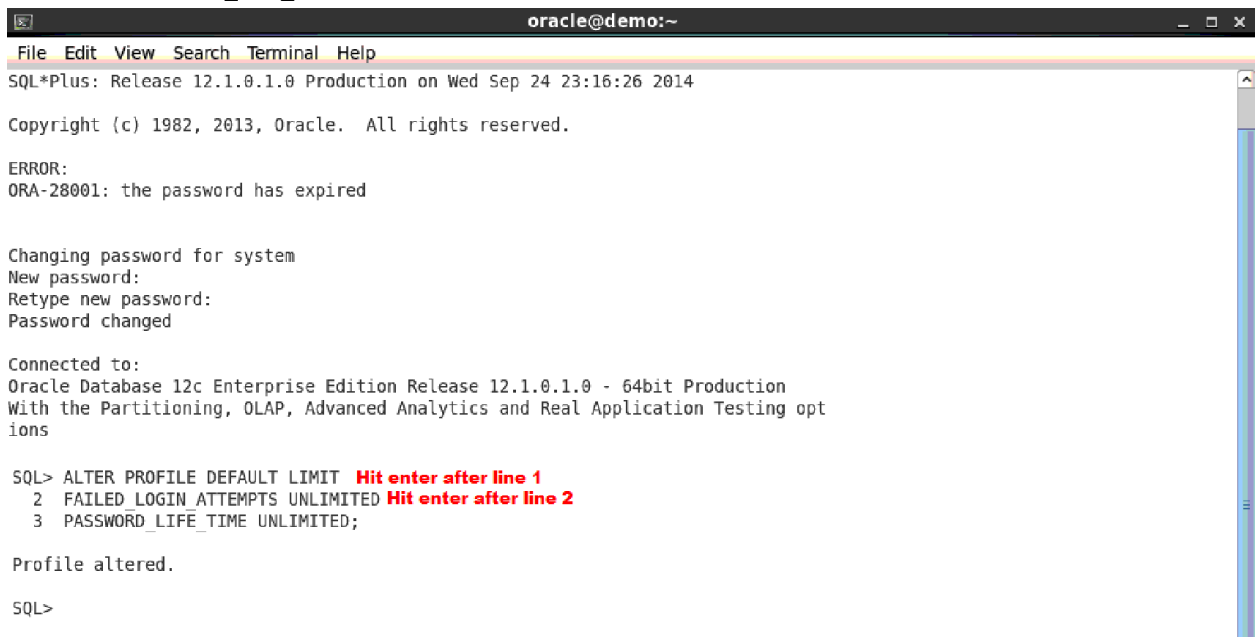
ERROR:
ORA-28001: the password has expired

Changing password for system
New password:
Retype new password: Admin123
Password changed Admin123

Connected to:
Oracle Database 12c Enterprise Edition Release 12.1.0.1.0 - 64bit Production
With the Partitioning, OLAP, Advanced Analytics and Real Application Testing opt
ions

SQL> █
```

- At the SQL prompt enter the following command as shown below
  - ALTER PROFILE DEFAULT LIMIT  
FAILED\_LOGIN\_ATTEMPTS UNLIMITED  
PASSWORD\_LIFE\_TIME UNLIMITED;



```
oracle@demo:~
File Edit View Search Terminal Help
SQL*Plus: Release 12.1.0.1.0 Production on Wed Sep 24 23:16:26 2014

Copyright (c) 1982, 2013, Oracle. All rights reserved.

ERROR:
ORA-28001: the password has expired

Changing password for system
New password:
Retype new password:
Password changed

Connected to:
Oracle Database 12c Enterprise Edition Release 12.1.0.1.0 - 64bit Production
With the Partitioning, OLAP, Advanced Analytics and Real Application Testing opt
ions

SQL> ALTER PROFILE DEFAULT LIMIT Hit enter after line 1
  2 FAILED_LOGIN_ATTEMPTS UNLIMITED Hit enter after line 2
  3 PASSWORD_LIFE_TIME UNLIMITED;

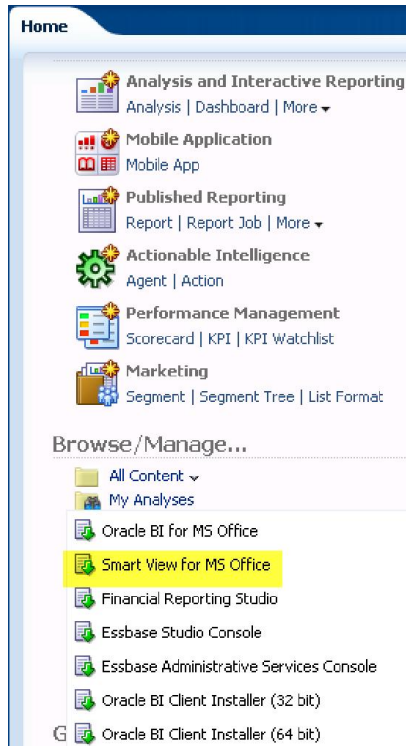
Profile altered.

SQL>
```

## 2. SMARTVIEW CLIENT

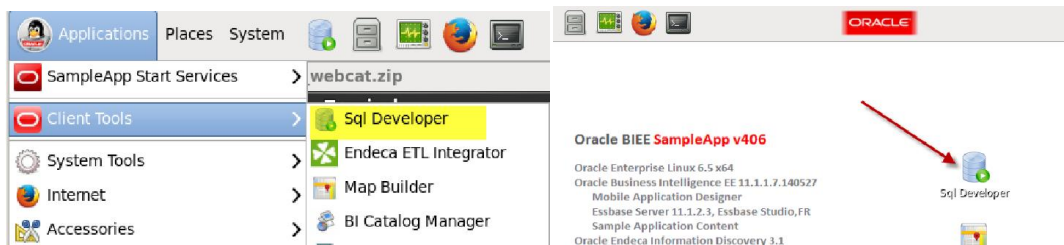
The Smartview client that ships with SampleApp v406 and is downloadable from OBIEE home page should be updated. Use the following URL to download the updated SV client

<http://www.oracle.com/technetwork/middleware/epm/downloads/smart-view-1112x-1939038.html>



## 3. SQL DEVELOPER SHORTCUT

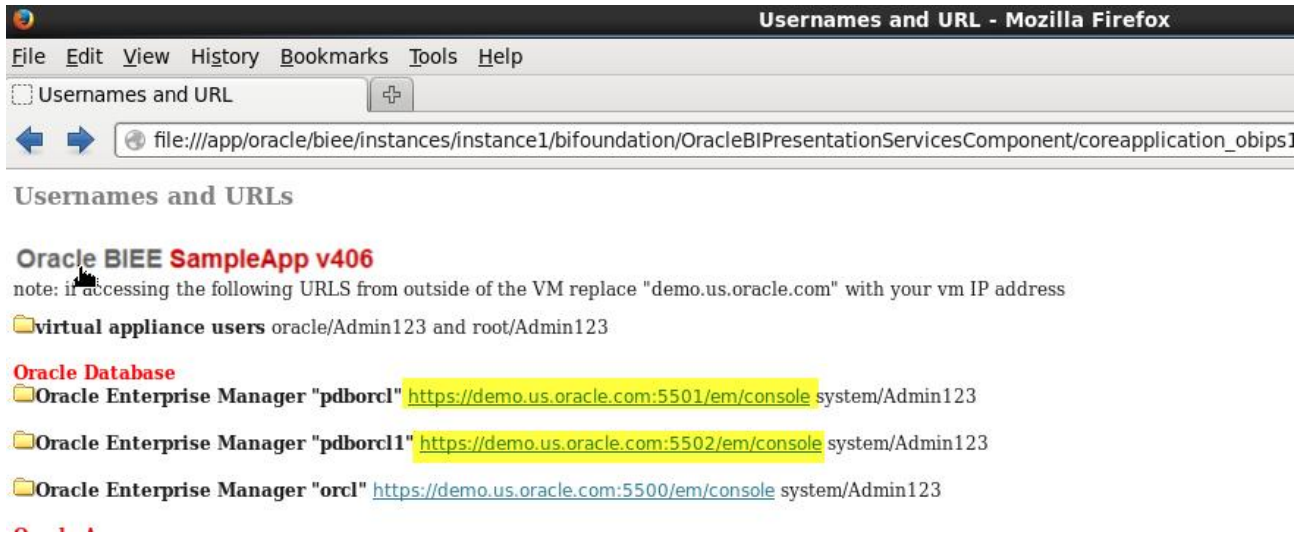
The sql developer shortcut from the SampleApp Client tools menu does not work. Instead use the SQL developer shortcut from the desktop



## 4. SAMPLEAPP LAUNCH PAD USERNAMES AND URLS

From the SampleApp Launch pad /Usernames and URLs section the following URL point to the incorrect location. Clicking on either of the urls shown in yellow will bring you to the Oracle EM for the ORCL database. If you require

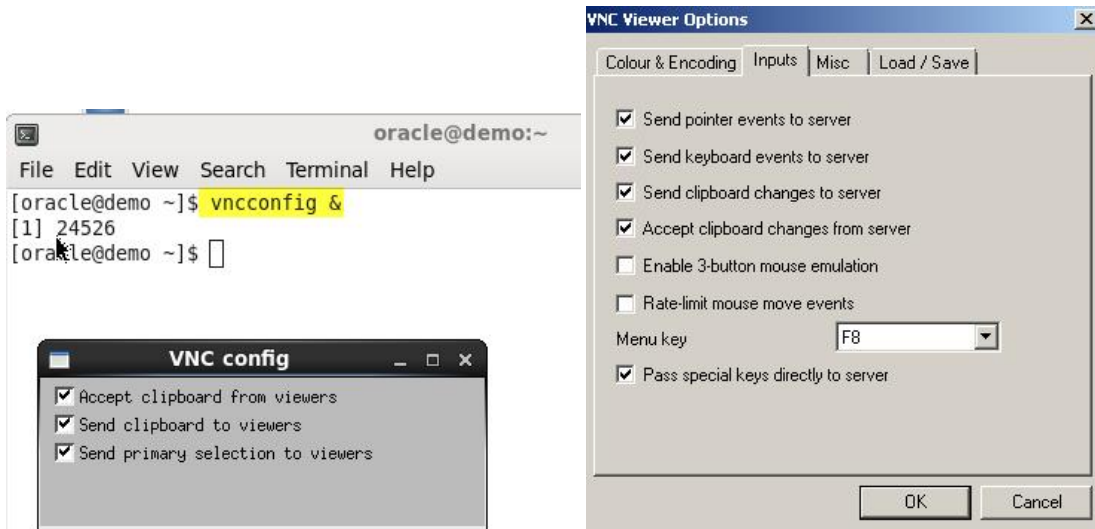
to access either the Oracle EM for pdborcl or pdborcl1 open a web browser and manually type the address as shown in yellow.



## FAQS

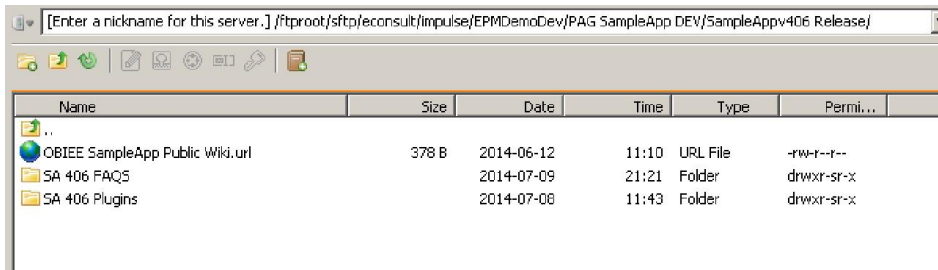
### 1. COPY AND PASTE INTO SAMPLEAPP VNC

To enable the ability to copy and paste from your local machine into a remote SampleApp vnc session run the following command inside your 406 image. Also ensure your local vnc viewer has the following options enabled



**INTERNAL ONLY**

Internal FAQs related to functionality/customizations only available to Oracle Employees. All internal FAQs can be found at <sftp://aingv0001.oracle.com//ftproot/sftp/econsult/impulse/EPMDemoDev/PAG SampleApp DEV/SampleAppv406 Release/SA 406 FAQs>



Name	Size	Date	Time	Type	Permi...
..					
OBIEE SampleApp Public Wiki.url	378 B	2014-06-12	11:10	URL File	-rw-r--r--
SA 406 FAQs		2014-07-09	21:21	Folder	drwxr-sr-x
SA 406 Plugins		2014-07-08	11:43	Folder	drwxr-sr-x