

# JD Edwards EnterpriseOne Tools Release 9.2

## Upgrade and Automated Special Instructions (ASI) Supplement

ORACLE WHITE PAPER | JUNE 2016





## Disclaimer

The following is intended to outline our general product direction. It is intended for information purposes only, and may not be incorporated into any contract. It is not a commitment to deliver any material, code, or functionality, and should not be relied upon in making purchasing decisions. The development, release, and timing of any features or functionality described for Oracle's products remains at the sole discretion of Oracle.



---

Upgrade and Automated Special Instructions (ASI) Supplement, Tools Release 9.2

Copyright © 2015, Oracle and/or its affiliates. All rights reserved.


This software and related documentation are provided under a license agreement containing restrictions on use and disclosure and are protected by intellectual property laws. Except as expressly permitted in your license agreement or allowed by law, you may not use, copy, reproduce, translate, broadcast, modify, license, transmit, distribute, exhibit, perform, publish, or display any part, in any form, or by any means. Reverse engineering, disassembly, or decompilation of this software, unless required by law for interoperability, is prohibited.

The information contained herein is subject to change without notice and is not warranted to be error-free. If you find any errors, please report them to us in writing.

If this is software or related documentation that is delivered to the U.S. Government or anyone licensing it on behalf of the U.S. Government, then the following notice is applicable:

U.S. GOVERNMENT END USERS: Oracle programs, including any operating system, integrated software, any programs installed on the hardware, and/or documentation, delivered to U.S. Government end users are "commercial computer software" pursuant to the applicable Federal Acquisition Regulation and agency-specific supplemental regulations. As such, use, duplication, disclosure, modification, and adaptation of the programs, including any operating system, integrated software, any programs installed on the hardware, and/or documentation, shall be subject to license terms and license restrictions applicable to the programs. No other rights are granted to the U.S. Government.

This software or hardware is developed for general use in a variety of information management applications. It is not developed or intended for use in any inherently dangerous applications, including applications that may create a risk of personal injury. If you use this software or hardware in dangerous applications, then you shall be responsible to take all appropriate fail-safe, backup, redundancy, and other measures to ensure its safe use. Oracle Corporation and its affiliates disclaim any liability for any damages caused by use of this software or hardware in dangerous applications.



Oracle and Java are registered trademarks of Oracle and/or its affiliates. Other names may be trademarks of their respective owners.


Intel and Intel Xeon are trademarks or registered trademarks of Intel Corporation. All SPARC trademarks are used under license and are trademarks or registered trademarks of SPARC International, Inc. AMD, Opteron, the AMD logo, and the AMD Opteron logo are trademarks or registered trademarks of Advanced Micro Devices. UNIX is a registered trademark of The Open Group.

This software or hardware and documentation may provide access to or information about content, products, and services from third parties. Oracle Corporation and its affiliates are not responsible for and expressly disclaim all warranties of any kind with respect to third-party content, products, and services. Oracle Corporation and its affiliates will not be responsible for any loss, costs, or damages incurred due to your access to or use of third-party content, products, or services.



## Table of Contents

Disclaimer	1
Introduction	1
Accessing Certifications (Minimum Technical Requirements)	1
Preserved / Replaced UDOs after Upgrading to Tools Release 9.2	2
Multi-Foundation Considerations	2
Required Components	2
Required Sequence of Tasks	3
Disabling / Enabling Security	3
Backing Up JD Edwards EnterpriseOne Tables	4
Upgrading Server Manager Management Console and Agents	4
Installing Change Assistant	5
Associating Environments with Enterprise Server	5
Installing JD Edwards EnterpriseOne Tools Release 9.2	7
Converting Local Database Encryption with ReconfigureDB.exe	8
Installing Microsoft Visual Studio C++ 2010 Runtime X86 Redistributables	8
Installing Planner Electronic Software Update (ESU)	9
Applying Current Tools Rollup ESU	9
Installing and Applying Current Tools Application Enhancement Rollup ASU	10
Installing ASI	10
Implementing Post Installation Tasks	20
Uninstalling ASI	22
Appendix A: UDO Table Architecture for 9.2	25



Appendix B: Table Conversion Schedule	24
Appendix C: ASI Validations	29
Appendix D: Errors and Warnings	31

## Introduction

Supporting every JD Edwards EnterpriseOne installation is a JD Edwards EnterpriseOne Tools release which delivers a platform with an innovative user experience, scalability, high performance, security and reliability for the JD Edwards EnterpriseOne application modules. The JD Edwards EnterpriseOne Tools Release 9.2 delivers feature enhancements, new platform certifications, and product maintenance including the creation and administration of User Defined Objects (UDO). UDOs are personalized objects that you can view and create for your own use and share with other users with appropriate permissions. The current UDOs are:

- » EnterpriseOne Pages
- » One View Reports
- » One View Watchlists
- » Composite Application Framework Layouts (CAFE1)
- » Queries
- » Grid Formats

UDO design panels are now more consistent and simplified for ease of use and manageability. JD Edwards EnterpriseOne Tools Release 9.2 introduces two new applications, Web Object Management Workbench (P98220W) and Work With User Defined Objects (P98220U) both applications manage UDO lifecycle. Enhancements to Security Workbench (P00950) increase the security of UDOs. The new management and security of UDOs involves several table conversions included in the JD Edwards EnterpriseOne Tools Release 9.2 upgrade. Table conversions are a new part of the JD Edwards EnterpriseOne Tools Release 9.2 upgrade process and are performed through the ASI.

---

*See: Appendix A: UDO Table Architecture and Appendix B: Table Conversion Schedule*

---

## Accessing Certifications (Minimum Technical Requirements)

You can locate the JD Edwards EnterpriseOne Tools Release 9.2 Certifications from My Oracle Support.

To access JD Edwards EnterpriseOne Tools Release 9.2 Certifications:

1. Navigate to [My Oracle Support](#).
2. Click the Certifications tab.
3. Search for JD Edwards EnterpriseOne Tools Release 9.2.

---

*Note: JD Edwards EnterpriseOne Tools Release 9.2 is compatible with JD Edwards EnterpriseOne Applications 9.0 and forward.*

---

## Preserved / Replaced UDOs after Upgrading to Tools Release 9.2

Upgrading to Tools Release 9.2 preserves all custom UDOs that are shared. Modification rules for specific UDOs are:

- » Unused CAFE1 content are not preserved
- » All personal UDO's will be preserved if not checked out.
- » EnterpriseOne Pages classified as \*PUBLIC and LineType 0 will be preserved

## Multi-Foundation Considerations

As a best practice, you should always set up multiple tools release foundations, including a test environment for applying tools release fixes. This helps ensure that a stable environment exists before you promote fixes to your production environment. You can also use this same principle and procedure to set up multiple foundations of major tools releases, such as Tools Release 9.1 and Tools Release 9.2.

---

*See: Working with Multiple Tools Release Foundations in the [JD Edwards EnterpriseOne Deployment Server Reference Guide](#) for Enterprise Systems Tools Release 9.2 and Applications Release 9.0 or 9.1 for your platform.*

---

## Required Components

There are required components necessary for a successful installation and configuration of the JD Edwards EnterpriseOne Tools Release 9.2 with the JD Edwards EnterpriseOne Applications 9.0 or 9.1 releases. You can view the required components from on My Oracle Support - [Required Components for JD Edwards EnterpriseOne Release 9.2 \(Doc ID 2054020.1\)](#).

For resources to support your EnterpriseOne Tools Only upgrade, review the [Tools Only Upgrade 9.2](#) content on the JD Edwards Resource Library.



## Required Sequence of Tasks

This list presents the mandatory sequence of tasks necessary to upgrade to JD Edwards EnterpriseOne Tools Release 9.2:

1. Disable/Enable Security
2. Backup JD Edwards EnterpriseOne Tables
3. Upgrade Server Manager and Agents

---

*Important:* As of JD Edwards EnterpriseOne Tools Release 9.2 you must install a Server Manager Agent on the Deployment Server.

---

4. Install Change Assistant
5. Associate Environments with Enterprise Server
6. Install JD Edwards EnterpriseOne Tools Release 9.2

---

*Important:* As of JD Edwards EnterpriseOne Tools Release 9.2 the Tools Release is now installed through Server Manager.

---

7. Convert Local Database Encryption with ReconfigureDB.exe
8. Install the MSVC 2010 Runtime X86 Redistributables
9. Install the Planner ESU
10. Apply Current Tools Rollup ESU
11. Install and Apply the Tools Application Enhancement Rollup ASU
12. Deploy the ASI
13. Implement Post Installation Tasks

---

*Important:* Following the above sequence is mandatory to upgrade to JD Edwards EnterpriseOne Tools Release 9.2.

---

## Disabling / Enabling Security

You must disable the Security Server in the Deployment Server jde.ini file and enable Security Server in the Enterprise Server jde.ini file. Security should remain disabled on the Deployment Server until the ASI completes successfully.

To disable the Deployment Server security through the jde.ini file:

1. Locate the [SECURITY] section in the Deployment Server jde.ini file.

```
[SECURITY]
```

```
SecurityServer=<Server Name>
```

2. Remove the server name from the Security Server entry.

```
[SECURITY]
```

```
SecurityServer=
```

3. Save the jde.ini file.

To enable the Enterprise Server security through jde.ini:

1. Locate the [SECURITY] section in the Enterprise Server jde.ini file.  
[SECURITY]  
SecurityServer=  
2. To enable security, you must add the server name to the Security Server entry.  
[SECURITY]  
SecurityServer=<Server Name>  
3. Save the modifications.  
4. Restart the services on the Enterprise Server.

## Backing Up JD Edwards EnterpriseOne Tables

The tools release download replaces the System directory and its subdirectories on the Deployment Server. Therefore, before you begin you should make a backup of the existing directory structure.

On the Deployment Server, make a copy of these directories:

/System

/Systemcomp

/OneWorld Client Install

We also recommend backing up the JD Edwards EnterpriseOne tables. Follow the JD Edwards EnterpriseOne backup procedures.

---

*See:* [Backing Up JD Edwards EnterpriseOne Tables in the JD Edwards EnterpriseOne Administration Guide.](#)

---

---

*Note:* The ASI process now backs up the critical tables F952400, F952420, F00950W as xml files in the path code\package folder. You can restore these files through an uninstall path in the ASI.

---

## Upgrading Server Manager Management Console and Agents

You run the Server Manager Management Console installer in Upgrade mode. The installer will detect if an existing installation exists and presents you the option to upgrade that installation to the latest version that is compatible with the current Tools Release.

To upgrade Server Manager Console:

1. Obtain the Tools Release 9.2 version of the Server Manager Management Console from the [Oracle Software Delivery Cloud](#).
2. Verify the Management Console is stopped.
3. Upgrade the Server Manager Console
4. Install an Agent on the Deployment Server.

5. Use the standard functionality to obtain and run the updates for the Server Manager Agents on the target machines.

---

*See:* [Working with the Server Manager Management Console in the JD Edwards EnterpriseOne Server Manager Guide.](#)

---

## Installing Change Assistant

The JD Edwards EnterpriseOne and World Change Assistant is a standalone Java application that helps you manage, download, and deploy JD Edwards EnterpriseOne packages. Change Assistant provides a single point of entry to facilitate administration of software updates and fixes.

To install Change Assistant:

1. Obtain Change Assistant from the Oracle JD Edwards EnterpriseOne [Update Center](#).  
You can access the Update Center by using the following navigation from My Oracle Support:  
My Oracle Support | patches & Updates tab | JD Edwards
2. Select Electronic Software Updates from the News and Links pane on the left.
3. Click the Download the Change Assistant Application link on the Update Center, Electronic Software Updates web page.
4. The JD Edwards EnterpriseOne and World Change Assistant page opens providing information about Change Assistant features.
5. Execute the steps in the Installing Change Assistant section.

---

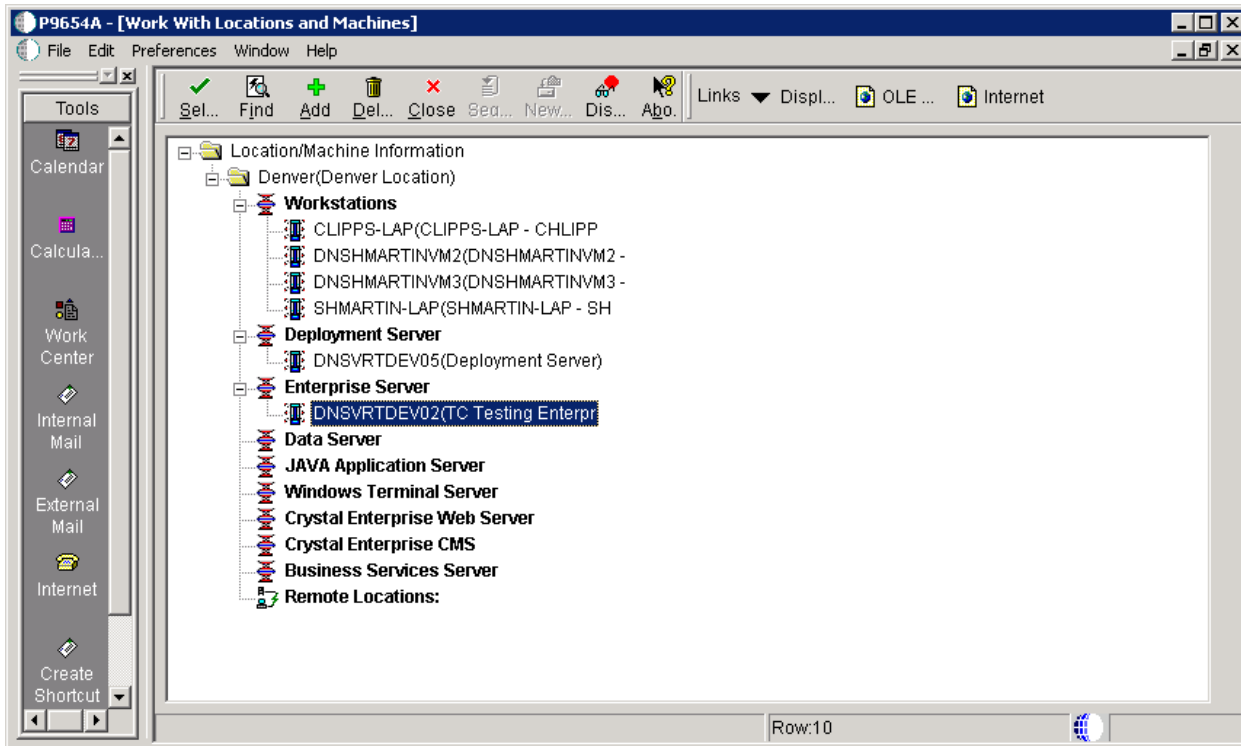
*See:* [Using Change Assistant in the JD Edwards EnterpriseOne Tools Software Updates Guide.](#)

---

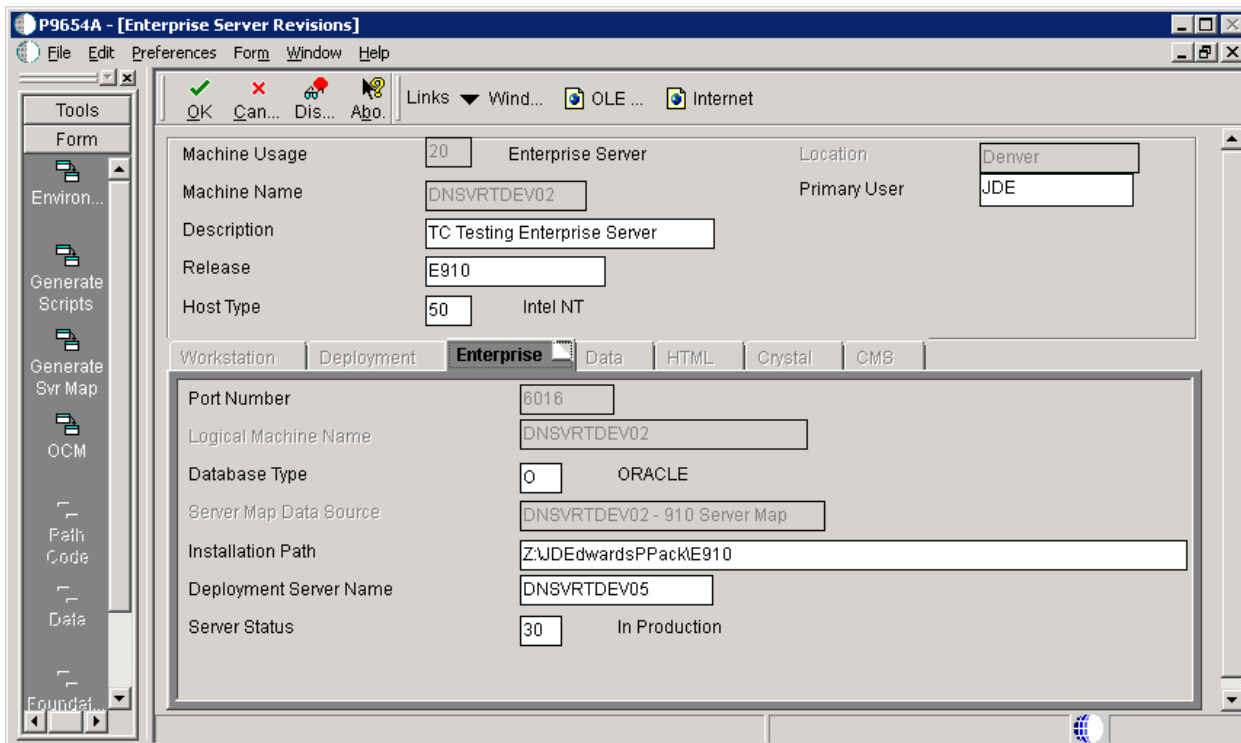
## Associating Environments with Enterprise Server

You associate environments with the Enterprise Server to automate the server map Object Configuration Manager (OCM) generation during the upgrade process.

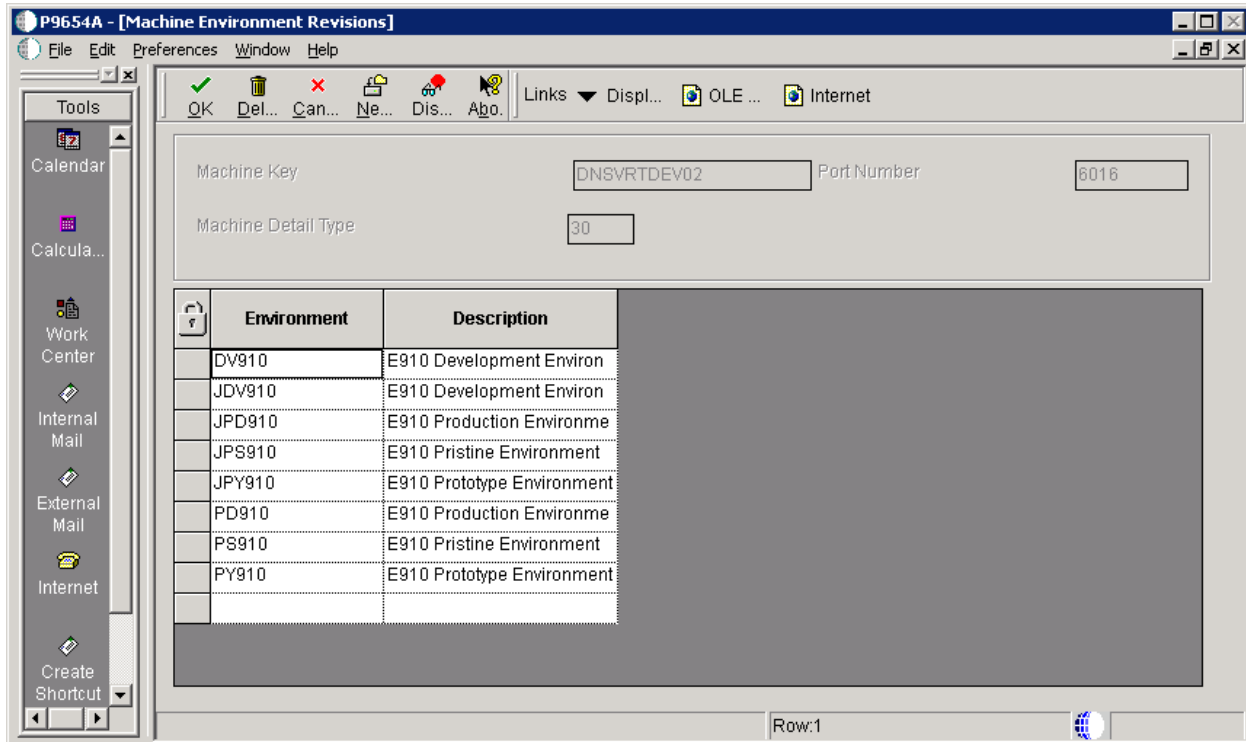
1. Log-in JDEPLAN environment on the Deployment Server.
2. Run Work with Locations and Machines (P9654A) application.



3. Expand the Enterprise Server node and select your Enterprise Server.



- Click Environments on the Form menu.



- Add all environments associated with the pathcode you are upgrading on the Enterprise Server.
- Click OK and restart JD Edwards EnterpriseOne.

## Installing JD Edwards EnterpriseOne Tools Release 9.2

You can locate information on fixes and enhancements in JD Edwards EnterpriseOne Tools Release 9.2 through Oracle Product Features accessible on the [JD Edwards Resource Library](#).

To install the latest tools release on the Deployment Server:

- Obtain the latest Tools Release from the Oracle JD Edwards EnterpriseOne [Update Center](#).
- Download the latest Tools Release .par file to your Deployment Server.
- Using Server Manager Console change the software component version.

---

*See: Installing a Tools Release on the Deployment Server in the [JD Edwards EnterpriseOne Deployment Server Reference Guide](#) for your platform.*

---

- Obtain the latest Tools Release for the HTML Server and Enterprise Server from the Oracle JD Edwards EnterpriseOne [Update Center](#).
- Download the latest Tools Release .par for the appropriate server.
- Using Server Manager Console change the software component version for the server instance.

---

See: [JD Edwards EnterpriseOne Tools Server Manager Guide](#) and [JD Edwards EnterpriseOne HTML Server Reference Guide](#) for your platform.

---

## Converting Local Database Encryption with ReconfigureDB.exe

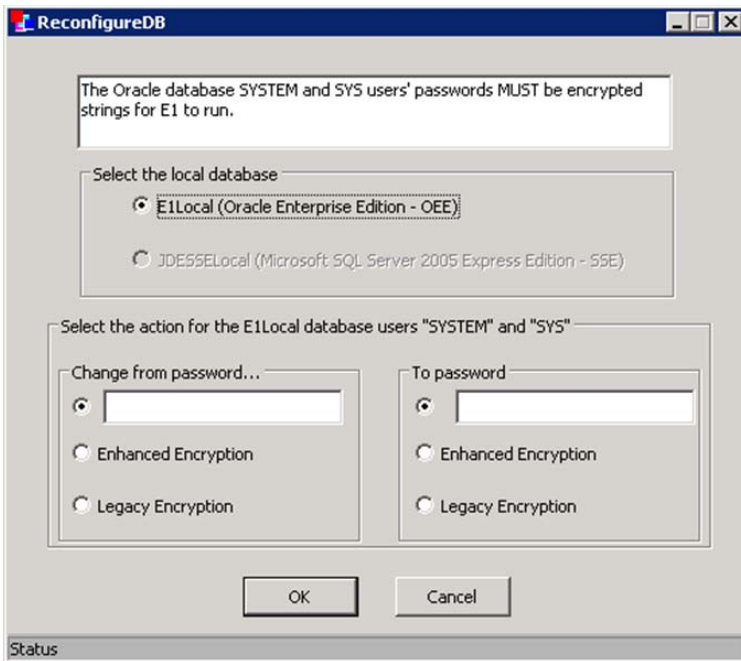
ReconfigureDB.exe will encrypt the EnterpriseOne local database.

---

*Note: Do not run ReconfigureDB.exe on a local SQL Server Express database.*

---

1. Run ReconfigureDB.Exe



2. Select Legacy Encryption under Change from password...
3. Select Enhanced Encryption under To password
4. Click OK and Cancel to exit

## Installing Microsoft Visual Studio C++ 2010 Runtime X86 Redistributables

All JD Edwards EnterpriseOne Windows machines receiving application foundation packages built with Microsoft Visual C++ 2010 or higher require the runtime libraries to be installed. For example, the Microsoft Visual C++ 2010 Redistributable Package (vc\_redist\_x86.exe) installs runtime components of Visual C++ required to run applications developed with Visual C++ on a computer that does not have Visual C++ 2010 compiler installed.

You must download and install the Microsoft Visual Studio C++ 2010 Redistributable Package (x86) from: <http://www.microsoft.com/en-us/download/details.aspx?id=5555>

## Installing Planner Electronic Software Update (ESU)

The Planner ESU contains special features that update the specifications and Dynamic Link Libraries (DLL) in the Planner path code. The Planner ESU distributes enhancements and fixes to the software programs. Planner ESUs have a .htm file that contains the Special Instructions for the software update. You will find the .htm file in the extracted directory for the Planner ESU.

To install Planner ESU:

1. Obtain the Planner ESU from the Oracle JD Edwards EnterpriseOne [Update Center](#).
2. Click on Electronic Software Updates link in the News and Links section on the left-hand side of the screen.
3. On the Electronic Software Updates main page, you will see a section marked Planner ESUs. Under the documentation links for Planner ESUs are links to the Planner ESUs, listed by EnterpriseOne application release.
4. Click the Get It Now link for the appropriate JD Edwards EnterpriseOne Application Release to be taken directly to the download for the Planner ESU.
  - » 19889513 - JD Edwards Application Release 9.0
  - » 19870568 - JD Edwards Application Release 9.1
5. Download to the Deployment Server.
6. Run the self-extracting executable and follow the on-screen instructions to install the Planner ESU on the Deployment Server.
7. Follow the steps in the Special Instructions, which are contained within an HTML file in the extracted Planner ESU directory.

---

*Note: It is recommended to apply the planner ESU to the pathcode that the ASI will be deployed to.*

---

---

*See: Running Software Updates in the [JD Edwards EnterpriseOne Tools Software Updates Guide](#).*

---

## Applying Current Tools Rollup ESU

To install Tools Rollup ESU:

---

*Note: This applies to JD Edwards EnterpriseOne Application Release 9.0 only.*

---

1. Obtain the Tools Rollup ESU from the Oracle JD Edwards EnterpriseOne [Update Center](#).
2. Search, download, and deploy the ESU associated with Bug:
  - » 21902097 - JD Edwards Application Release 9.0

## Installing and Applying Current Tools Application Enhancement Rollup ASU / ESU

To install the 9.2 Application Enhancement ASU:

---

*Note: This applies to JD Edwards EnterpriseOne Application Release 9.0 only.*

---

1. Obtain the 9.2 Application Enhancement ASU from the Oracle JD Edwards EnterpriseOne [Update Center](#).
2. Search and download the ASU, using category JD Edwards EnterpriseOne.
  - » UDOE900 - Management of User Defined Objects ASU for E1 Tools 9.2
3. Deploy using JD Edwards EnterpriseOne Work with Software Updates (P96470).

---

*Note: The 9.2 Tools Application Enhancement is an ASU and ESU for the Initial release. ASUs cannot be deployed using Change Assistant.*

---

- a. Verify all JD Edwards EnterpriseOne processes are exited.
- b. Copy the ASU to the Deployment Server.
- c. Run the executable as Administrator.

This will uncompress the contents of the ASU and prepare them for deployment through the JD Edwards EnterpriseOne Work with Software Updates.
- d. Open JD Edwards EnterpriseOne and launch JD Edwards EnterpriseOne Work with Software Updates (P96470). Menu GH9612- Run Application Software Updates.
- e. Select the UDOE9\*0 grid row by double clicking on the row header.
- f. Click the Next button and follow the prompts to complete deployment.

To install the 9.2 Tools Rollup ESUs:

---

*Note: This applies to JD Edwards EnterpriseOne Application Release 9.1 only.*

---

1. Search, download, and deploy the following two baseline ESUs, using category Electronic Software Updates and searching by Name:
  - » JM14414
  - » JM18666
2. Search, download, and deploy the latest ESU associated with bug number: 22533818

## Installing ASI

ASIs are special instructions for software updates executed automatically. They are downloaded separately from the software update you are installing, either using [Update Center](#) or Change Assistant. The JD Edwards EnterpriseOne Tools Release 9.2 ASI is a .par file and can be found using TL92\* as a search criteria for the Update Name within the Update Center or Change Assistant. The ASI will perform the following tasks:

- » Copy data source definitions
- » Create Object Configuration Manager mappings and tables
- » Load components required for table conversions
- » Backup critical data



- » Run table conversions

The ASI will perform multiple validations to ensure success.

---

*See: Appendix C: ASI Validations*

---

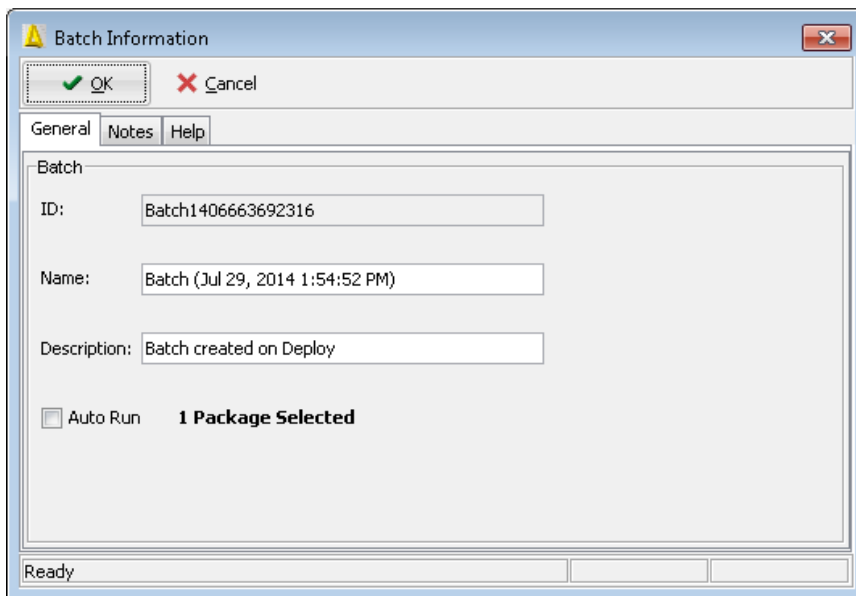
---

*See: Deploying Oracle Business Accelerators on JD Edwards EnterpriseOne documentation on My Oracle Support (Doc ID 1486063.1).*

---

To deploy ASI:

1. Obtain the ASI for Tools Release 9.2 from the Oracle JD Edwards EnterpriseOne [Update Center](#). TL920001\*.
2. Download and access with Change Assistant.
3. On Change Assistant, expand the Work with Packages node.
4. Navigate to the ASI package that you downloaded.
5. Select the ASI package by checking the box next to the package.
6. Click Deploy on the Work with Packages tool bar to start the ASI.



---

*See: Appendix D: Errors and Warnings*

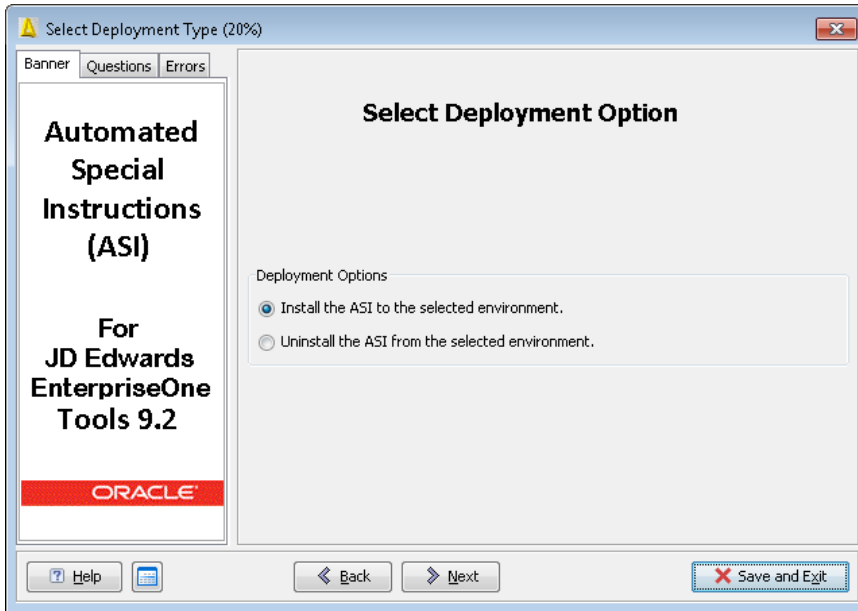
---

7. Click OK to continue.

The Select Deployment Type dialog box opens and presents the following options:

- » Install the ASI to the selected environment.

- » Uninstall the ASI from the selected environment.
8. Select Install the ASI to the selected environment.

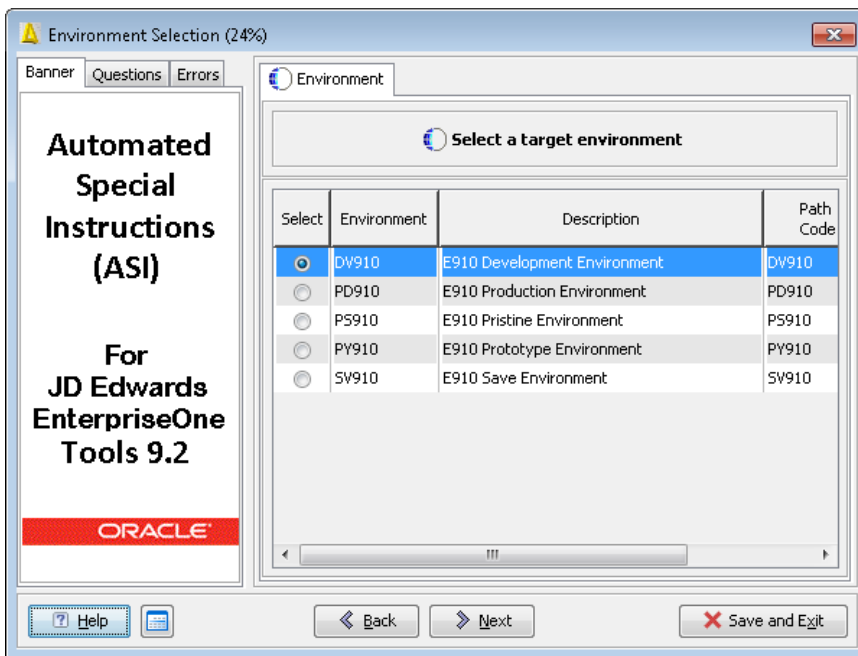


9. Click Next.

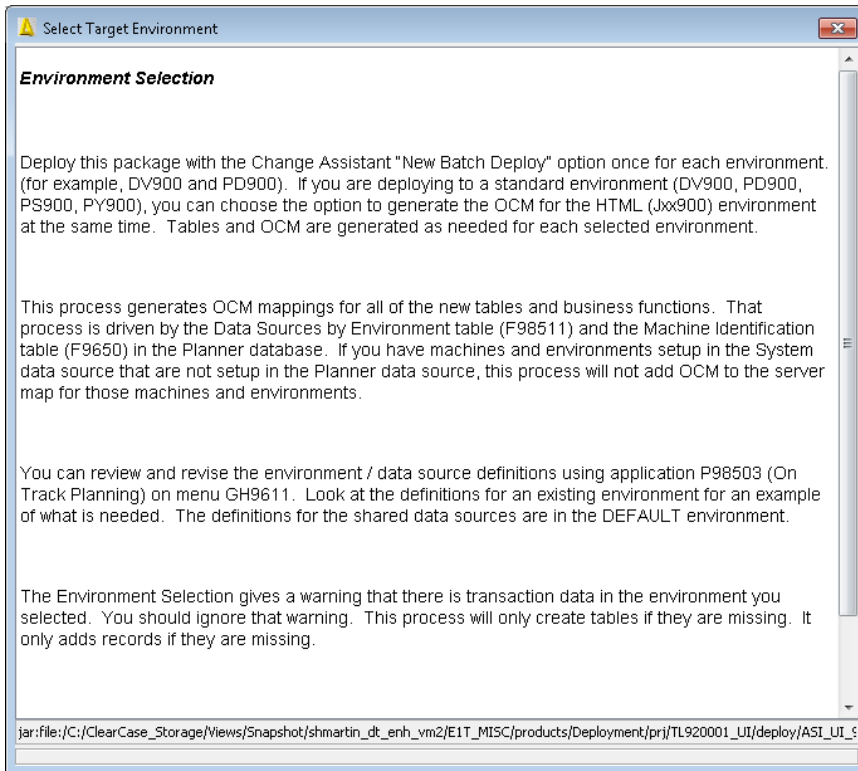
---

*Note:* To access additional information on each step, click the Help button.

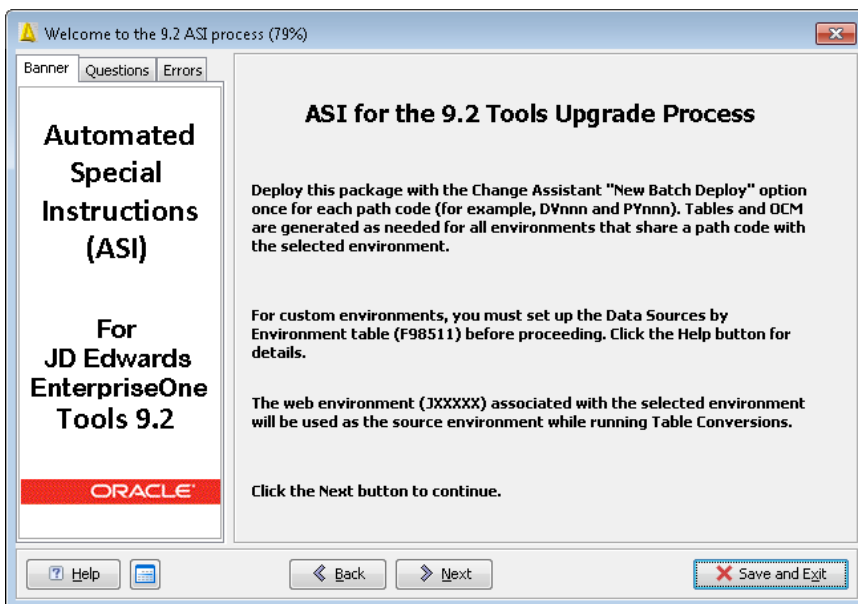
---



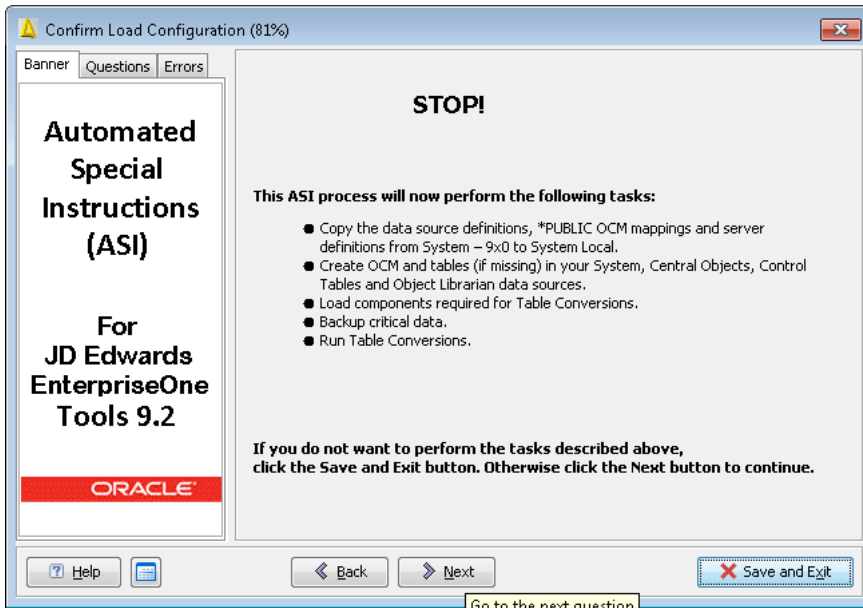
1. Click the Help button for details regarding this dialog box.



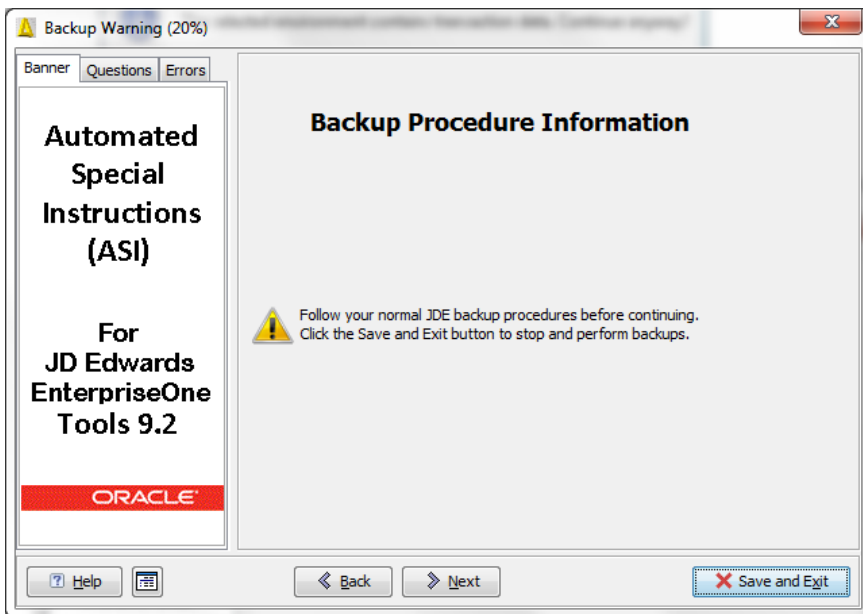
2. Click the X to close out of the Help dialog box.
3. Select the target environment and click Next.



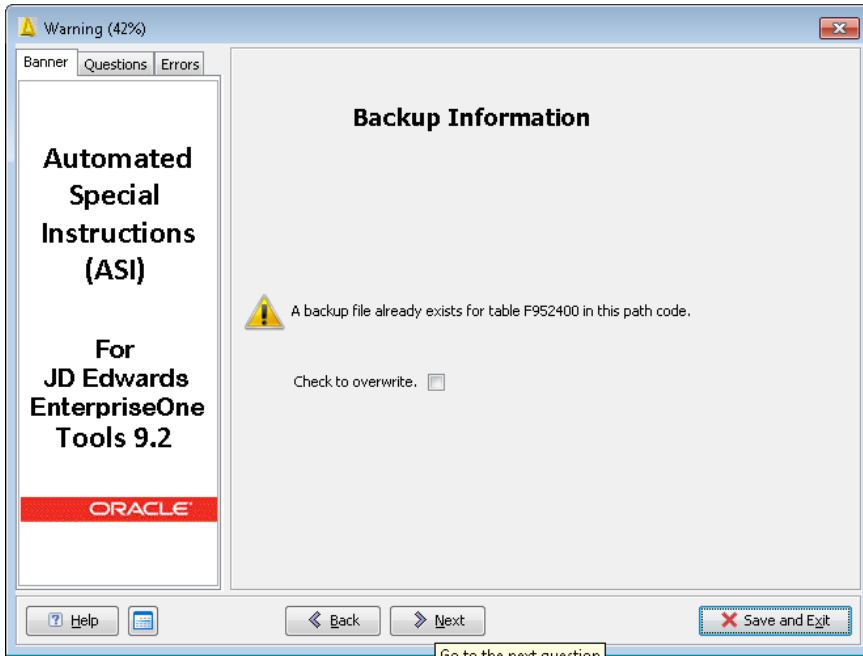
4. Click Next.



5. Click Next.

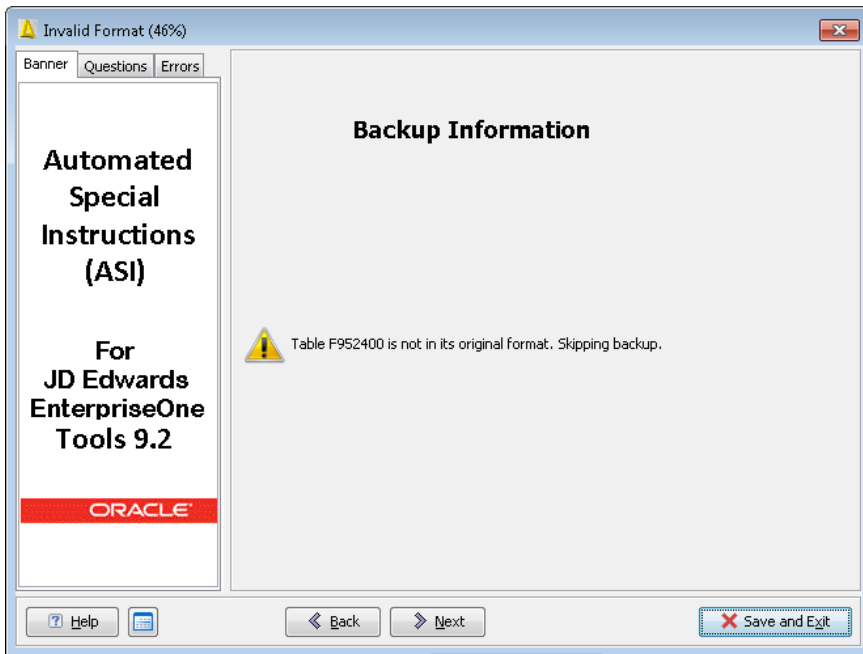


6. Click Next.



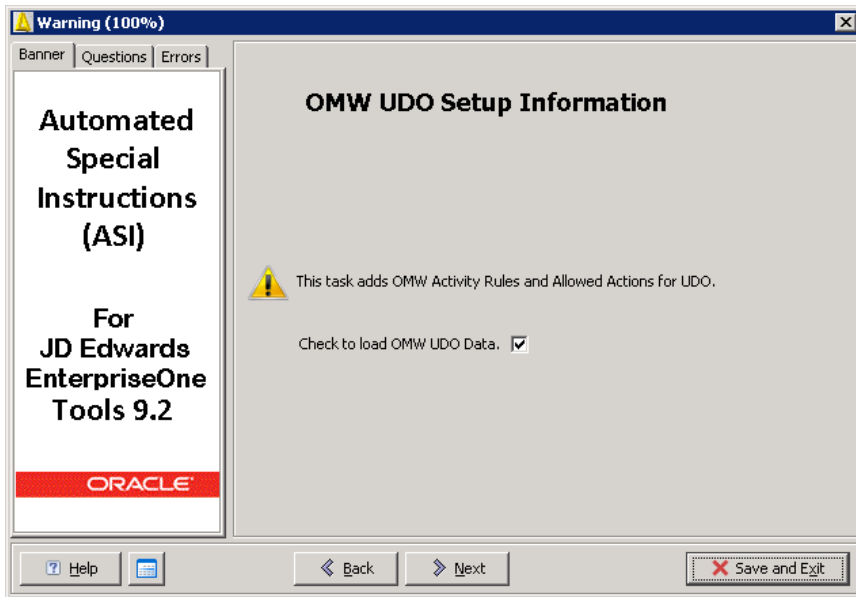
7. Click Next.

If F95240, F592420, F00950W, and F9000 tables have been backed up from a previous deployment, you can select to overwrite them or click Next to continue.



The ASI verifies the critical tables are in original format and skips the backup.

8. Click Next.

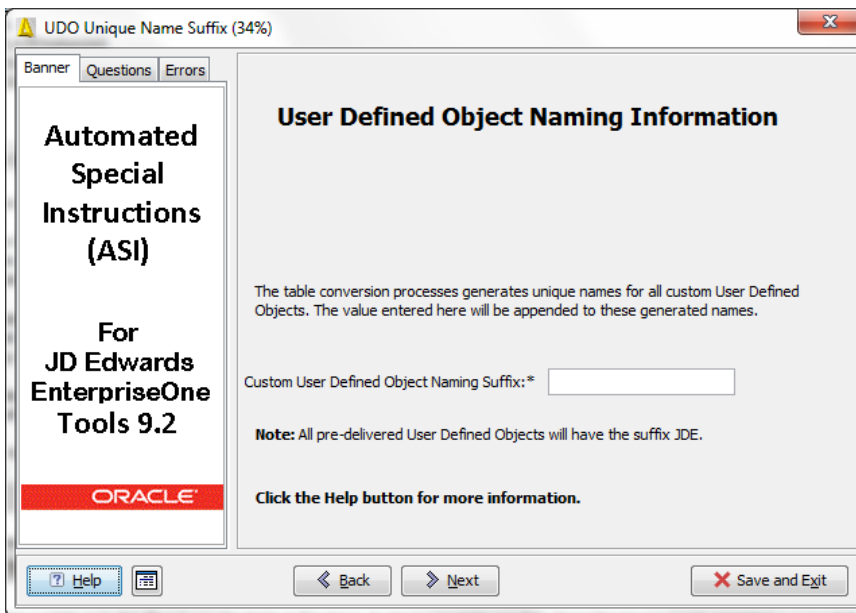


9. Select Check to load OMW UDO Data and click Next.

---

*Note:* Check to load OMW UDO Data adds records in F98223 – Allowed Actions (Delete is being delivered for all UDOs) and F98225 – OMW Transfer Activity Rules for E900 and E910

---



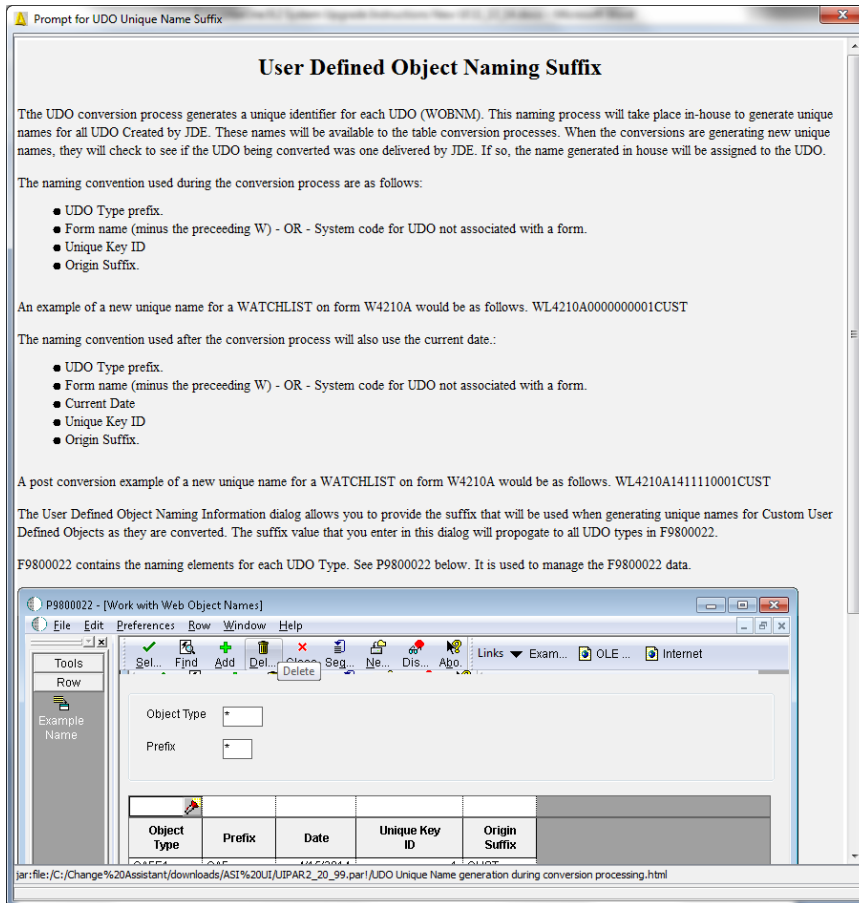
10. Enter a 1-6 character suffix to be used during the table conversion processes.

---

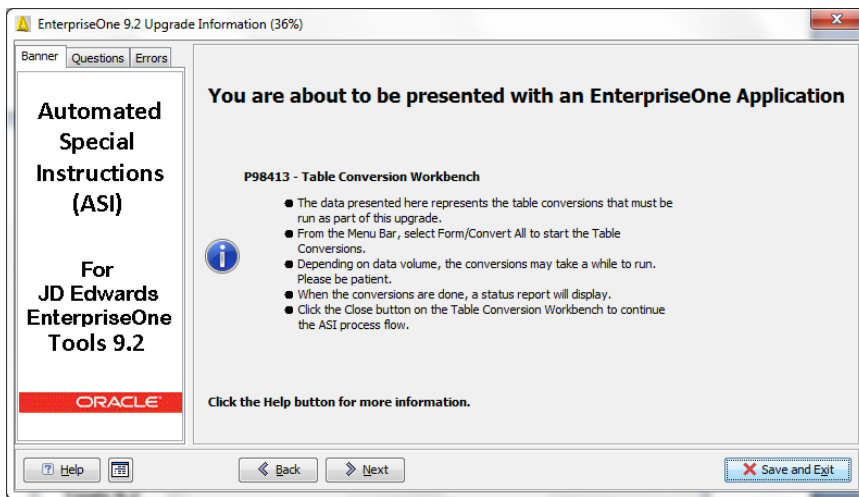
*Warning:* Invalid characters: !"#\$\$%&'()\*+,-./:;<=>?@[\\]^\_`{|}~,

---

11. Click the Help button to view suffix details.



12. Click the X to close.



**Important:** Read the Table Conversion Workbench instructions carefully. The instructions describe how to precede with the dialog boxes to follow.

13. Click the Help button to view Table Conversion Workbench details.

**P98413 - Table Conversion Workbench**

From the menu bar, select Form->Convert All

**Standalone Table Conversion Workbench**

File Edit Preferences Form Row Help

Close Seq... New... Prev... Next Con... Dis... Abo Links Conve... Internet

Plan Name: JPY910 TCs for Tools 9.2 Mode: Asynch

New Status: 30

Run TC on Deployment Behv Max  Tracing On

Target Environ	Previous Environ	Table Name	DL Sts	Description	Program Name	Version	Conv. Seq.	Dep. On	Error Code
JPY910	JPY910	F88950	30	Validated	R89952450A	XJDE0001	45	0	
JPY910	JPY910	F88950	30	Validated	R89952450B	XJDE0001	46	45	
JPY910	JPY910	F952334	30	Validated	R89952450C	XJDE0001	47	45	
JPY910	JPY910	F952430	30	Validated	R89952430	XJDE0001	48	0	
JPY910	JPY910	F952440	30	Validated	R89952440	XJDE0001	48	0	
JPY910	JPY910	F952400	30	Validated	R89952400	XJDE0001	49	0	
JPY910	JPY910	F952420	30	Validated	R89952420	XJDE0001	49	48	
JPY910	JPY910	F952430L	30	Validated	R89952430L	XJDE0001	49	48	
JPY910	JPY910	F952400L	30	Validated	R89952400L	XJDE0001	50	49	

Row:1

**R984052 - Table Conversion Status Report**

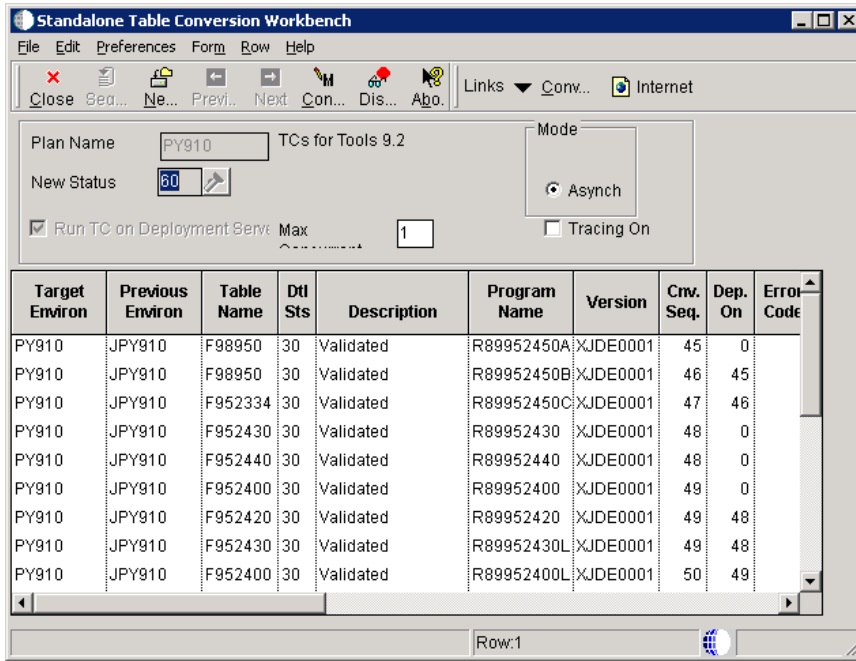
When the following report appears, the Table Conversions have completed. Click Close on the Table Conversion Workbench to continue flow.

Environment	Previous Environment	Object Name	Description	Dev Sts	Program Name	Description	Version / Bus View	Conv. Seq.	Dep. Seq.	Cur. Seq.	Cur. Stat.
JPY910	JPY910	F88950	User Overrides Table	60	R89952450A	Table Conversion of F952450 (C)	XJDE0001	45	0	2	Comple
JPY910	JPY910	F88950	User Overrides Table	60	R89952450B	Table Conversion of F952450 (C)	XJDE0001	46	45	2	Comple
JPY910	JPY910	F952334	Masdata Table for Public Race	60	R89952450C	Table Conversion of F952450 (C)	XJDE0001	47	45	2	Comple
JPY910	JPY910	F952430	Admance Query	60	R89952430	Table Conversion for Admance Q	XJDE0001	48	0	2	Comple
JPY910	JPY910	F952440	Genl Formatt Detail	60	R89952440	Table Conversion for Genl Form	XJDE0001	48	0	2	Comple
JPY910	JPY910	F952400	User Generated Comments Detail	60	R89952400	Table Conversion of F952400 (O)	XJDE0001	49	0	2	Comple
JPY910	JPY910	F952420	CaseCase Workshim Detail	60	R89952420	Table Conversion of F952420 (W)	XJDE0001	49	48	2	Comple
JPY910	JPY910	F952430	Admance Query	60	R89952430L	Table Conversion for Admance Q	XJDE0001	49	48	2	Comple

jar:file:/C:/ClearCase\_storage/Views/Snapshot/shmartin\_ek\_enh\_vm2/EIT\_MISC/products/Deployment/prj/TL920001/deploy/UIPAR\_20\_99.par!/EnterpriseOne 9.2 Upgra

14. Click the X to close.





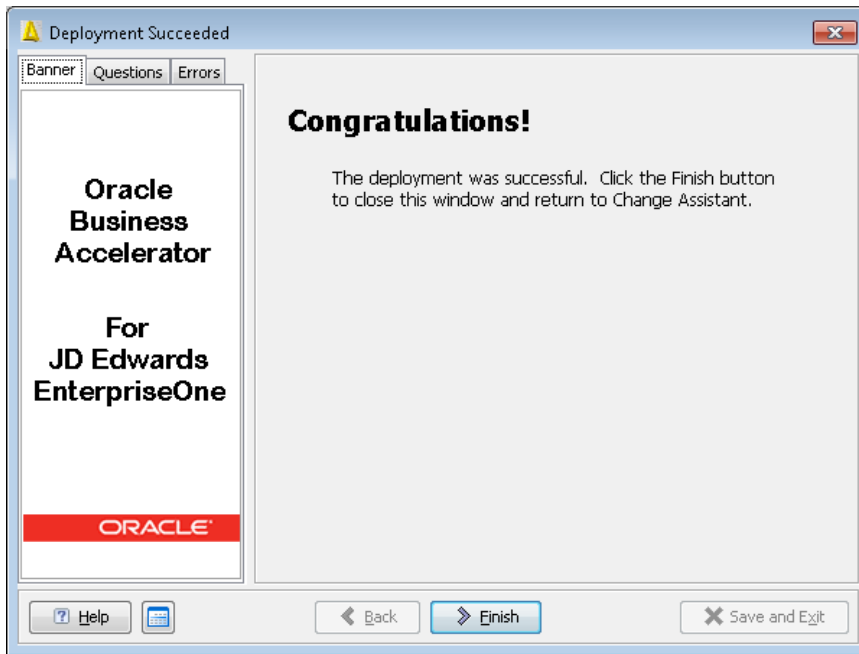
15. Click the Form exit, and then click Convert All.

*Note: Clicking Convert All starts the table conversions. When the table conversions are complete a report will display with results.*

Plan Name	Previous Environ	Object Name	Description	Dtl Sts	Program Name	Description	Version / Bus View	Cnv Seq	Dep Seq	Cnv Hist	Conversion History / Error Text
PY910	JPY910	F98950	User Overrides Table	30	R89952450A	Table Conversion of F952450 (C)	XJDE0001	45	0	2	Completed Normally
PY910	JPY910	F98950	User Overrides Table	30	R89952450B	Table Conversion of F952450 (C)	XJDE0001	46	45	2	Completed Normally
PY910	JPY910	F952334	Mendan Table for Public Ratio	30	R89952450C	Table Conversion of F952450 (C)	XJDE0001	47	46	2	Completed Normally
PY910	JPY910	F952430	Advance Query	30	R89952430	Table Conversion for Advance Q	XJDE0001	48	0	2	Completed Normally
PY910	JPY910	F952440	Grid Format Detail	30	R89952440	Table Conversion for Grid Form	XJDE0001	48	0	2	Completed Normally
PY910	JPY910	F952400	User Generated Contents Detail	30	R89952400	Table Conversion of F952400 (O)	XJDE0001	49	0	2	Completed Normally
PY910	JPY910	F952420	OneCenter Watchlists Detail	30	R89952420	Table Conversion of F952420 (W)	XJDE0001	49	48	2	Completed Normally
PY910	JPY910	F952430L	Advance Query	30	R89952430L	Table Conversion for Advance Q	XJDE0001	49	48	2	Completed Normally
PY910	JPY910	F952400L	User Generated Contents Detail	30	R89952400L	Table Conversion of E1 Page Lan	XJDE0001	50	49	2	Completed Normally
PY910	JPY910	F9312	Security History	30	R9312TC	History Table TC	XJDE0001	51	49	2	Completed Normally
PY910	JPY910	F00950	Security Workbench Table	30	R00950WTE	E1PAGE View Security Conven	XJDE0001	52	51	2	Completed Normally
PY910	JPY910	F00950W	Web Object Security Workbench	30	R00950WTF	Watch List F00950W TC	XJDE0001	52	51	2	Completed Normally
PY910	JPY910	F952332	Collaboration Configuration D	30	R00950WTC	CAPEI Authentication Security C	XJDE0001	52	51	2	Completed Normally
PY910	JPY910	F98974	Runtime Features Authorization	30	R00950WTD	One View Authorizations Secur	XJDE0001	52	51	2	Completed Normally
PY910	JPY910	F98950	User Overrides Table	30	R00950WTA	Grid Format Security Conven	XJDE0001	52	51	2	Completed Normally
PY910	JPY910	F98950	User Overrides Table	30	R00950WTB	Advance Query Security Conven	XJDE0001	52	51	2	Completed Normally
PY910	JPY910	F98950	User Overrides Table	30	R00950WTC	CAPEI Layout View Security Con	XJDE0001	52	51	2	Completed Normally
PY910	JPY910	F9900	Task Master	30	R99000VRE	One View Report and Query Conv	XJDE0001	53	52	2	Completed Normally

16. Click Close on the Table Conversion Workbench.

*Note: Follow the recommended course of action displayed on the dialog box for any failed table conversion.*



17. Click Finish.

## Implementing Post Installation Tasks

Associate converted UDOs with default projects.

To associate converted UDOs to default projects:

1. Build and deploy a full server package.

---

*See: [Building Packages in the JD Edwards Enterprise Tools Package Management Guide.](#)*

---

*Note: In order for the UBE to run properly, you must set the external role for users outside OMW to 02-Developer. You do this by clicking on the Constants icon in the P98230 application.*

---

2. Run Universal Batch Engine (UBE) R98222UDO/XJDE0001 from a web client to add converted objects to default projects.

R98222UDO will perform the necessary steps to create the default project for the personal objects and corresponding records so that the end user can make modifications to their personal objects.

The UBE runs over the F9861W table and will check if the object exists in any current project. If the object exists, that information will be written to the report and nothing will be done with the object.

If the object does not yet exist in a project, The UBE will:

Check if the default project for the user who created the object exists.



If not:

Create the default project; add the user as a developer and originator.

If so:

Check if the user has the role of developer or originator and add accordingly.

Add the object to the default project.

Update the Object Management Workbench (OMW) object record to indicate that this object is checked out to the default project.

3. In order for end users to be able to view, create and modify UDOs, you must confirm setup of Allowed actions.. The security works tightly with OMW allowed actions, which you must setup prior to creating security records. The OMW allowed actions are:
  - a. Copy (06)
  - b. Reserve (03) - checkout
  - c. Delete (04)
  - d. Add (05)
  - e. Remove from Project (12)
  - f. Add Object to Project (16)
  - g. Remove Reservation (30) – erase checkout

---

*See: [JD Edwards EnterpriseOne Tools Object Configuration Guide](#) and [JD Edwards EnterpriseOne Security Administration Guide](#)*

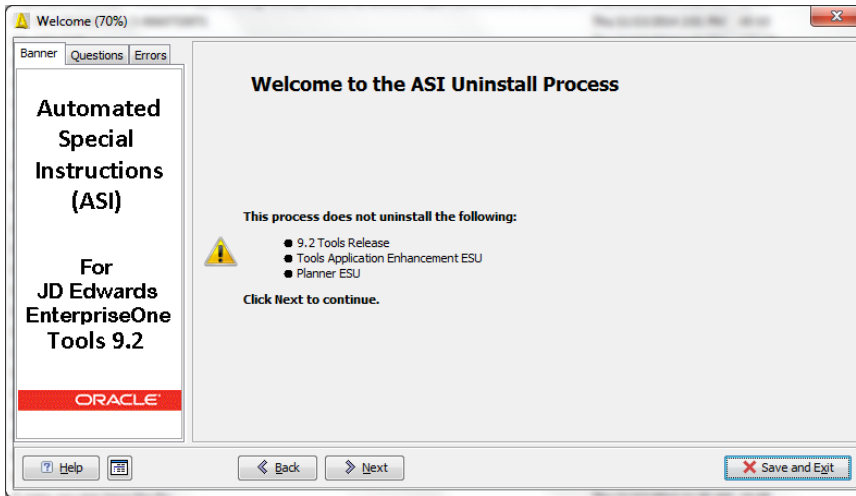
---

4. In order to transfer a UDO from one path code to another, you must confirm the transfer activity rules in Object Management Configuration (OMC). You setup these transfer activity rules as you would for a regular Object Librarian object (i.e. APPL) with the source and target path codes.

## Uninstalling ASI

To uninstall the ASI:

1. Deploy the ASI through Change Assistant.
2. On Select Deployment Option, select Uninstall the ASI from the selected environment.
3. Click Next.

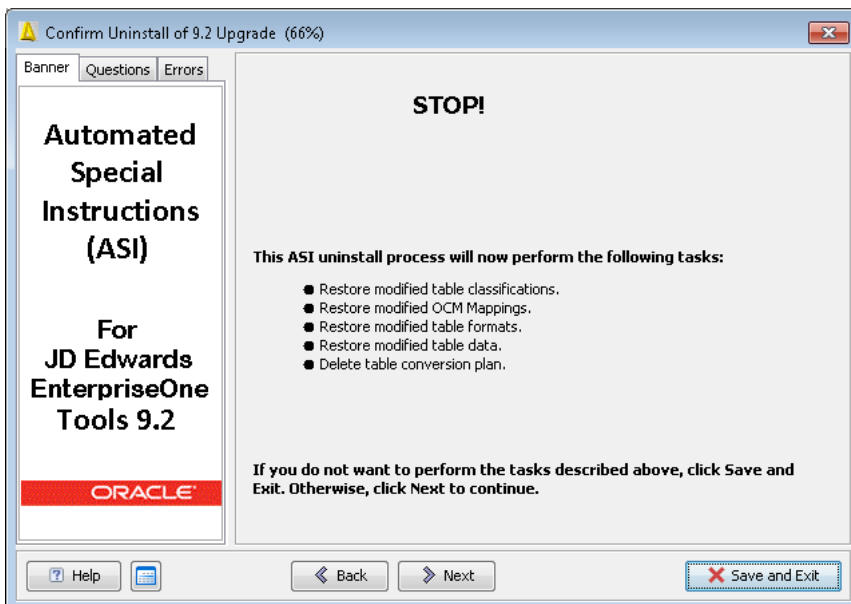


---

*Note: The JD Edwards EnterpriseOne 9.2 Tools Release, Tools Application Enhancement ESU, and Planner ESU will not be uninstalled.*

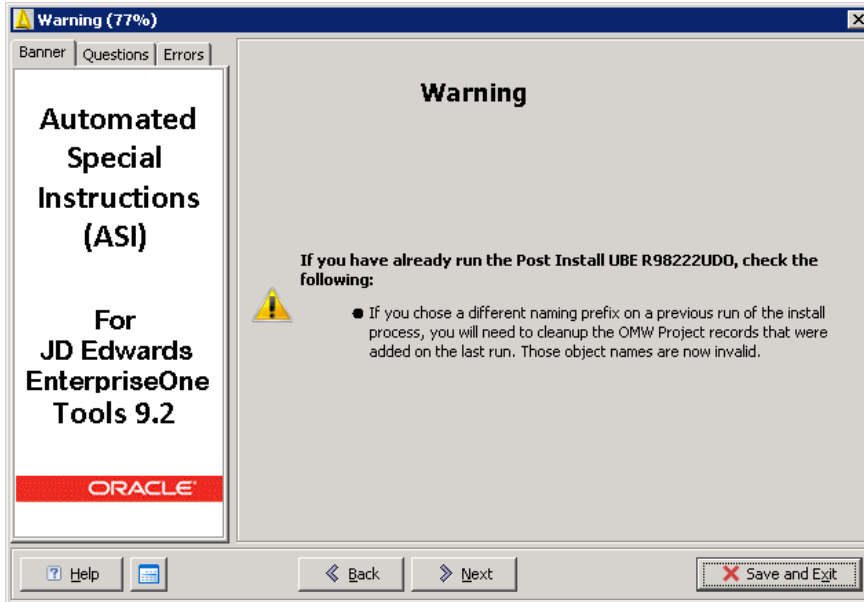
---

4. Click Next.

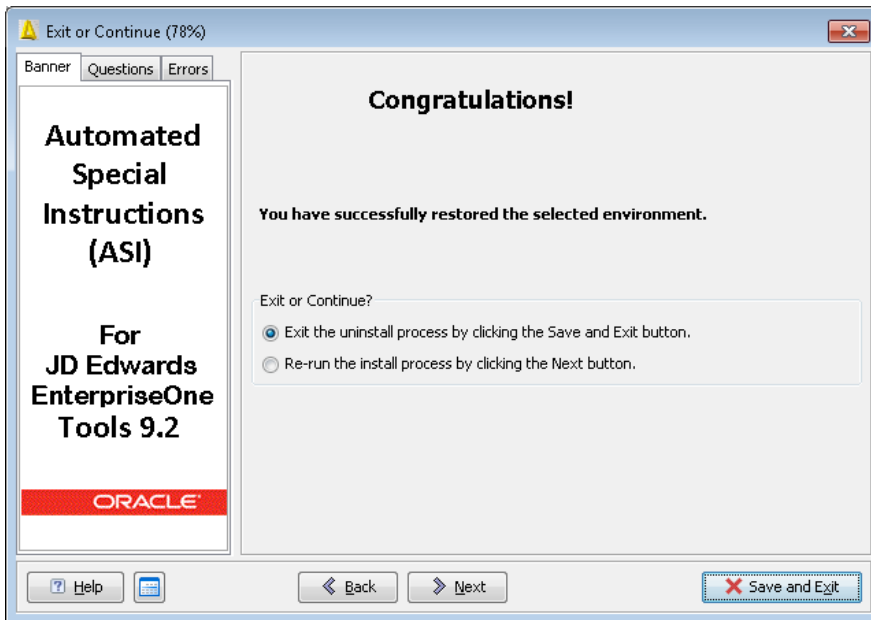


5. Click Next.

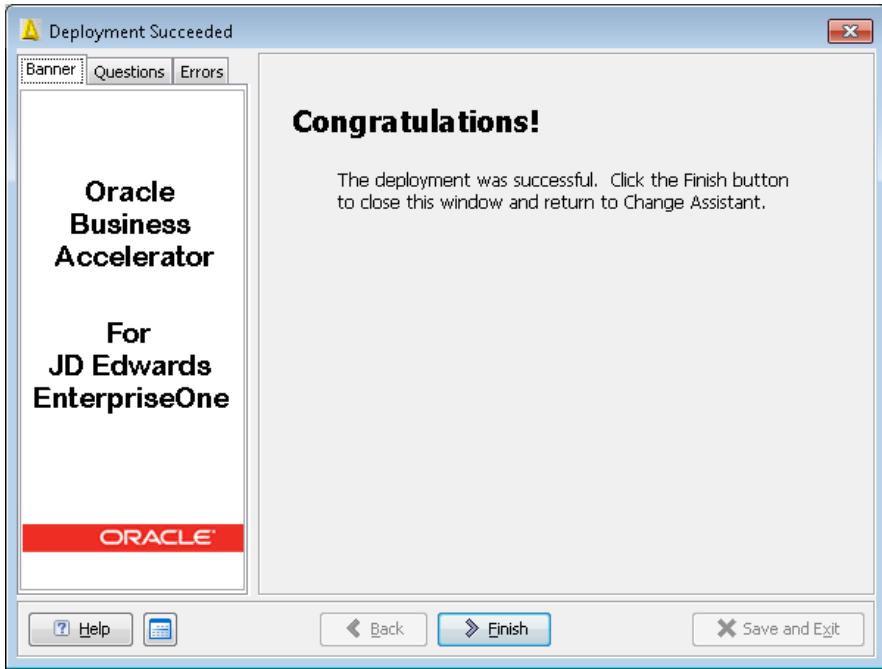
Post Install UBE R98222UDO warning.



6. Click Next.



7. Select Exit the uninstall process... and click Save and Exit to complete the uninstall process.  
Select Re-run the install process... and click Next to start the ASI installation.



8. Click Finish.

## Appendix A: UDO Table Architecture for 9.2

### Changed Tables

- » F952400 – User Generate Contents Detail
- » E1Pages
- » OVR – One View Reports
  - » F952420 – One Center Watch list detail
  - » F9860W - Web Object Master Table.
  - » F00950W – Web Object Security

### New Tables

- » F9860WD – Web Object Language Description
- » F9861W – Web Object Librarian Detail
- » F952430 - Advanced Query
- » F952440 – Grid Formats
- » F952450 – CAFE One
- » F952460 – Default UDO
- » F98700R –Object Archive Repository
- » Consolidated UDO object repository.
- » Stores each UDO as a consolidated object.
- » Used to move objects as a single record (transfer/deployment).
  - » F98700H – Object Archive Repository History
- » History of Consolidated UDO Object repository.
- » History of changes to a UDO.
  - » F98700D
- » UDO dependencies ex. Watchlist depends on a query

## Appendix B: Table Conversion Schedule

### JD Edwards EnterpriseOne Tools Release 9.2 Table Conversions

Sequence/ Dependency	TC Input	TC/ TC Version	Inputs/ Outputs	Run this Job	Requirements	Purpose	Notes
45/ 0	F98950	R89952450A XJDE0001	F98950 F952450	To convert Cafe1 data in F98950 (UOTY = 'RI' and SEQ = '4') when upgrading from 9.1.	None	Converts old Cafe1 objects, inserts records to F98950T, creates XML Document BLOB to update F952450 from F98950, F952330, F952331 and F952334. Populates Object Librarian records in F9860W and F9861W.	Writes all the language data into F952450, which will be converted and deleted later.
46/ 45	F952334	R89952450C XJDE0001	F952334 F952450	To convert Related Application Information Framework (RAIF) content when upgrading from 9.1.	R89952450A	Converts RAIF content, creates the XML Document BLOB to update F952450 from F952330, F952331 and F952334. Populates Object Librarian records in F9860W and F9861W.	None



Sequence/ Dependency	TC Input	TC/ TC Version	Inputs/ Outputs	Run this Job	Requirements	Purpose	Notes
47/ 0	F952430	R89952430 XJDE0001	F98950 F952430	To convert Query (AQ) data in F98950 (UOTY ='AQ' and IDLST!='1') when upgrading from 9.1.	None	Convert query data to F952430 and write AQ information to F98950T. Populates Object Librarian records in F9860W and F9861W.	None
47/ 0	F952440	R89952440 XJDE0001	F98950 F952440	To convert Grid Format (GF) data in F98950 (UOTY='GD') when upgrading from 9.1.	None	Retrieves Grid Tab Name from BLOB, write Grid Format Record to F952440, and populates Object Librarian records in F9860W and F9861W.	Writes all the language data into F952440 (WOFU1='L'), which will be converted and deleted later.
48/ 47	F952440	R89952440B XJDE0001	F952440 F9860WD	To convert Grid Format (GF) language data in F952440 (WOFU1='L') when upgrading from 9.1.	R89952440	Convert GF language data to F9860WD, and delete language data in F952440 after TC.	None
48/ 47	F952440	R89952440A XJDE0001	F98950 F9860WD	To convert Grid Format (GF) data in F98950 (UOTY='GD' and USER='*PUBLIC') when upgrading from 9.1.	R89952440	Fetches GF language data from F98950D and populates GF data in F9860WD.	None
49/ 0	F952400	R89952400 XJDE0001	F952400 F952400	In-place convert for OneView Report (OVR) and E1Page (E1P) when upgrading from 9.1.	None	Converts old OVR and E1P objects to new format of F952400. Populates Object Librarian records in F9860W and F9861W.	Writes the E1P language data into F952400, which will be converted and deleted later. There is no language data for OVR.

Sequence/ Dependency	TC Input	TC/ TC Version	Inputs/ Outputs	Run this Job	Requirements	Purpose	Notes
49/ 47	F952420	R89952420 XJDE0001	F952420 F952420	In-place convert for Watchlist when upgrading from 9.1.	R89952430	Converts old Watchlist objects to new format of F952420. Populates Object Librarian records in F9860W and F9861W.	Retrieves Advanced Query Object ID (AQOID) from F98950T.
49/ 47	F952430	R89952430L XJDE0001	F98950 F9860WD	To convert Query (AQ) language data in F98950 (UOTY ='AQ' and IDLST!='1') when upgrading from 9.1.	R89952430	Fetches language data from F98950D and F98950T. Populates AQ language data in F9860WD.	None
50/ 49	F952400	R89952400O XJDE0001	F952400 F952400	To delete extra OneView Report (OVR) data after TC R89952400	R89952400	Deletes the extra OVR checkout record if the reserved user is equal to the UGCOWNER in F952400.	None
50/ 49	F952400	R89952400L XJDE0001	F952400 F9860WD	To convert E1Page (E1P) language data in F952400 (LNGP>Blank) when upgrading from 9.1.	R89952400	Converts E1P language data to F9860WD, and deletes language data in F952400 after TC.	None
50/ 45	F98950	R89952450B XJDE0001	F98950 F952460	To convert Cafe2 data in F98950 (UOTY="RI") when upgrading from 9.1	R89952450A	To fetch the WOBNM data from F98950D and insert to F9860WD.	None
51/ 50	F9312	R9312TC XJDE0001	F9312 F9312			F9312 Table Primary Unique Key index has changed	This table conversion must run prior to any other security table conversion.

Sequence/ Dependency	TC Input	TC/ TC Version	Inputs/ Outputs	Run this Job	Requirements	Purpose	Notes
52/ 51	F00950W	R00950WF XJDE0001	F00950W F00950W			1. F00950W Table columns and index changes 2. User with Action Security of Share automatically has Modify Security set.	This table conversion must be run prior to any other security table conversion.
53/ 52	F00950	R00950WTE XJDE0001	F00950 F00950W	Select on SECTY security type value equals H		1. Create View Security. 2. Automatically create *PUBLIC for Create Action Security.	
53/ 52	F98950	R00950WTD XJDE0001	F958974 F00950W	Select on TAREC feature type value equals 3		1. Create Action Security based on authorization definition. 2. Create View Security based on authorization.	1. Web Enable has to be turned on for Environment. 2. The environment has to be in the same path code as the source environment.
53/ 52	F98950	R00950WTA XJDE0001	F98950 F00950W	Select UO data type value equals GF		1. F00950W Table columns and index changes. 2. User with Action Security of Share automatically has modify security set	
53/ 52	F98950	R00950WTB XJDE0001	F98950 F00950W	Select UO data type value equals AQ and Sequence value equals 4		1. The View Security records are written for *PUBLIC and E1 Role for specific application and form. 2. Action Security is created automatically with *PUBLIC and Create only actions.	

Sequence/ Dependency	TC Input	TC/ TC Version	Inputs/ Outputs	Run this Job	Requirements	Purpose	Notes
53/ 52	F98950	R00950WTC XJDE0001	F98950 F00950W	Select UO data type value equals RI		1. The View security records are written for *PUBLIC and E1 Role for specific applications and forms.	
53/ 52	F98950	R00950WTG XJDE0001	F952332 F00950W			1. Create Action Security based on authorization definition. 2. Create View Security based on authorization.	1. Web Enable has to be turned on for Environment. 2. The environment has to be in the same path code as the source environment.
54/ 53	F9000	R9000OVR XJDE0001	F9000 F9000			1. A non-task type of 23, the records are directly copied. 2. For task type 23, the One View report ID is changed to UDO generated ID. 3. For task type 23, the query ID is changed to UDO generated ID.	

## Appendix C: ASI Validations

### Security Check:

Is there a security server defined in the deployment server jde.ini. If yes, display error.

[SECURITY]

SecurityServer=

### Verify 9.2 TR:

Uses an API to detect the deployment server system level. An Error occurs if the system level is not 9.2 or greater.

### Verify Latest Planner:

Checks for B967121 in the local environment. This is delivered by the planner ESU. If it does not exist, an error occurs.

### Verify owner/password definitions:

Checks the jde.ini on the deployment server for the [DSPWD] section. Each Deployment Server owner needs to have a password associated with it.

[DSPWD]

Format is datasource OWNER=PASSWORD

DD920=DD920

DV920=DV920

JDE=JDE

OL920=OL920

PD920=PD920

PS920=PS920

PS920CTL=PS920CTL

PS920DTA=PS920DTA

PY920=PY920

SVM920=SVM920

SY910=SY910


SVM910=SVM910

OL910=OL910

DD910=DD910

DV910=DV910

SY920=SY920



TESTCTL=TESTCTL

TESTDTA=TESTDTA

PS910=PS910

PS910DTA=PS910DTA

PS910CTL=PS910CTL

PY910=PY910

CRPDTA=CRPDTA

CRPCTL=CRPCTL

PD910=PD910

PRODCTL=PRODCTL

PRODDTA=PRODDTA

**Verify Control Tables DS is Unicode:**

Uses N8900950 to get the data source defined for type 'C' Control Tables. N96500 then checks the F98611 to see if the data source has the Unicode flag set. If not, an error occurs.

**Verify Tools Application Enhancement ESU is installed:**

Checks for the existence of a new table, F952430. If the table does not exist, an error occurs.

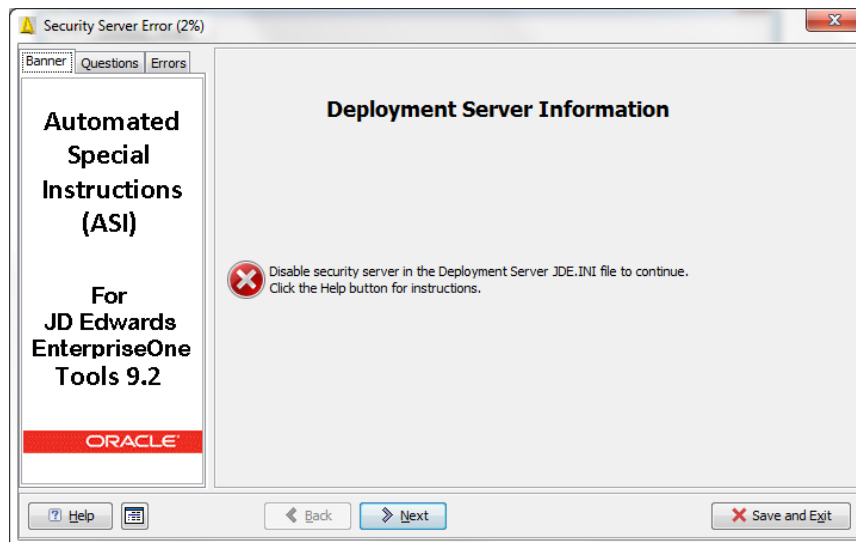
## Appendix D: Errors and Warnings

The ASI performs verifications prior to and during the installation for:

- » Security
- » Tools Release
- » Planner ESU
- » Tools Rollup ESU
- » Data source owner and password
- » Deployment location
- » Package release
- » Transaction data
- » Tools Rollup ESU

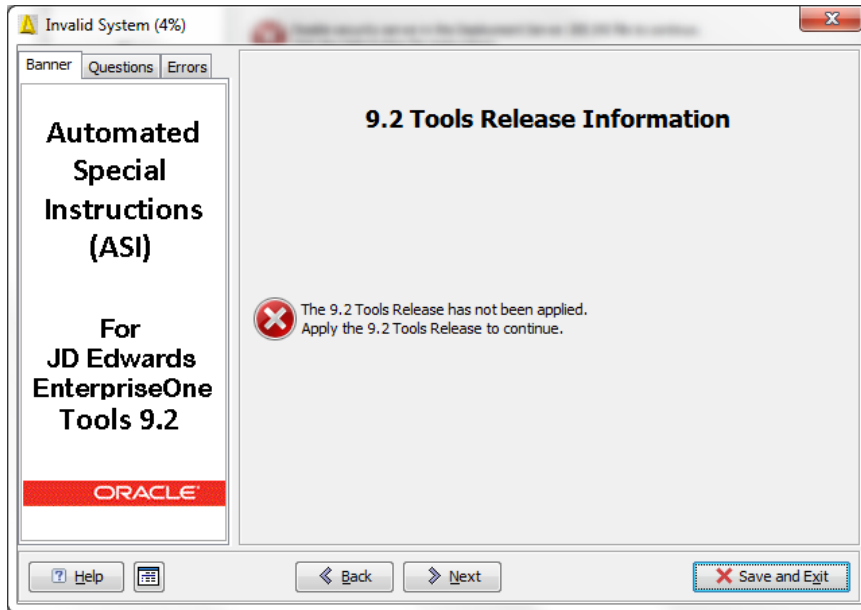
### Security

The following dialog box displays if Security Server is enabled on the Deployment Server. Processing will continue when the Security Server is disabled.



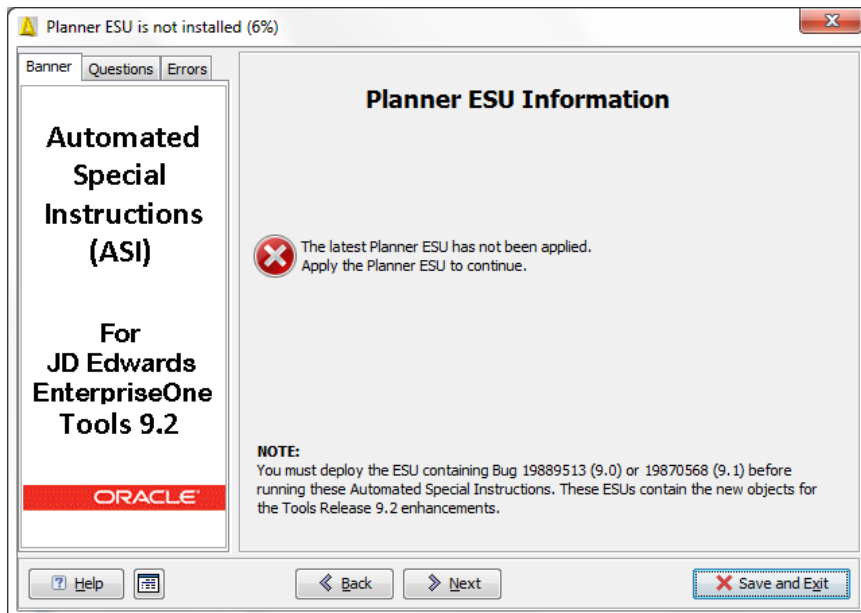
### Tools Release

The following dialog box appears if the Deployment Server Tools Release is prior to 9.2.



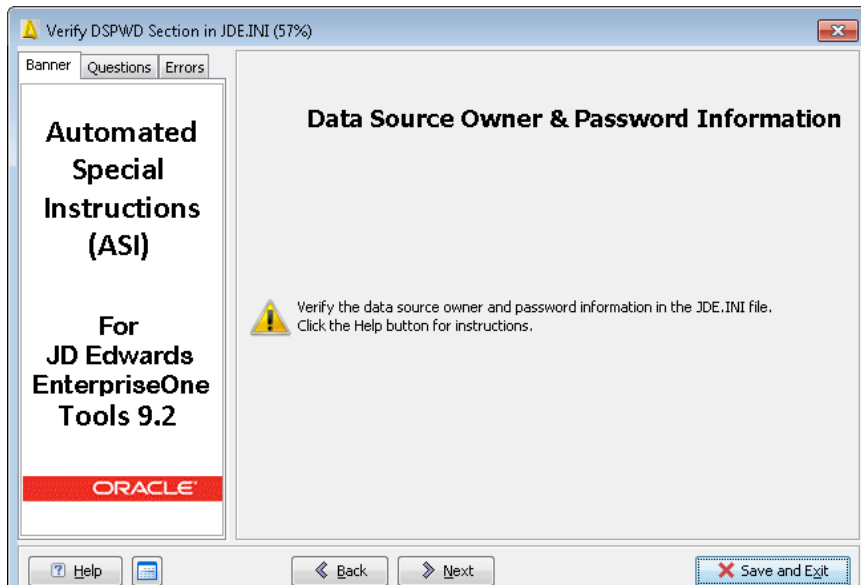
#### Planner ESU

The following dialog box displays when the Planner ESU is an older version. Processing will continue when ASI detects the latest Planner ESU.

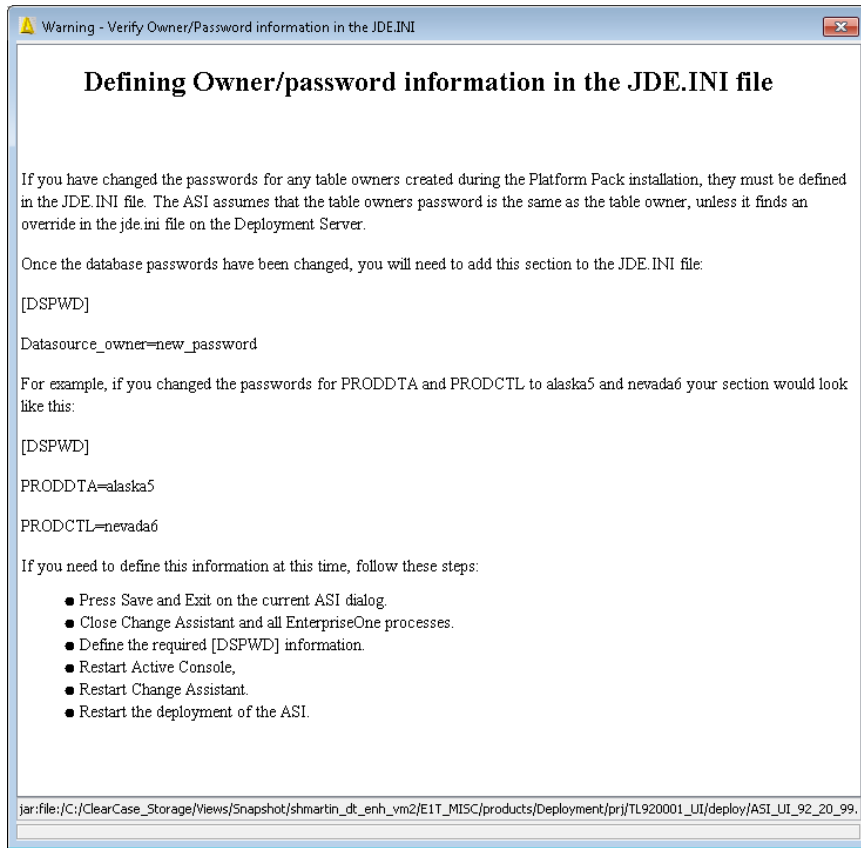


#### Data Source Owner and Password





Clicking the Help button displays the following:

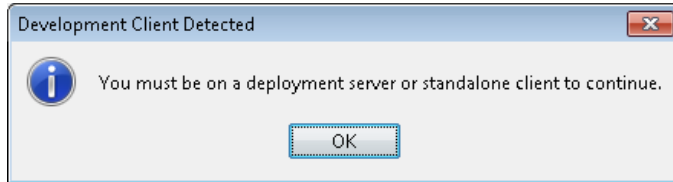


## Deployment Location

---

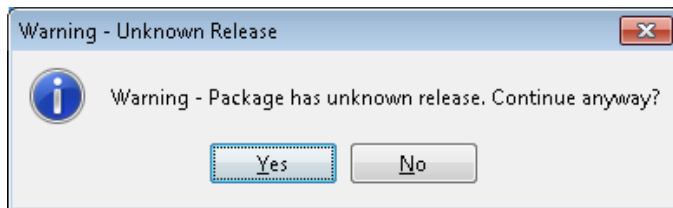
*Note: Deployment is not allowed on a development client.*

---



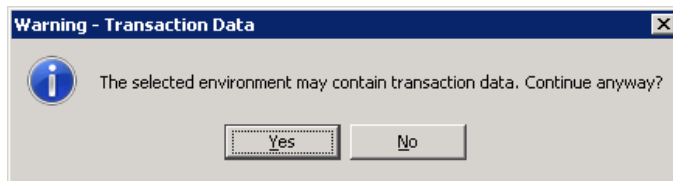
Perform deployment from a Deployment Server.

#### Package Release



If this dialog box appears, click yes.

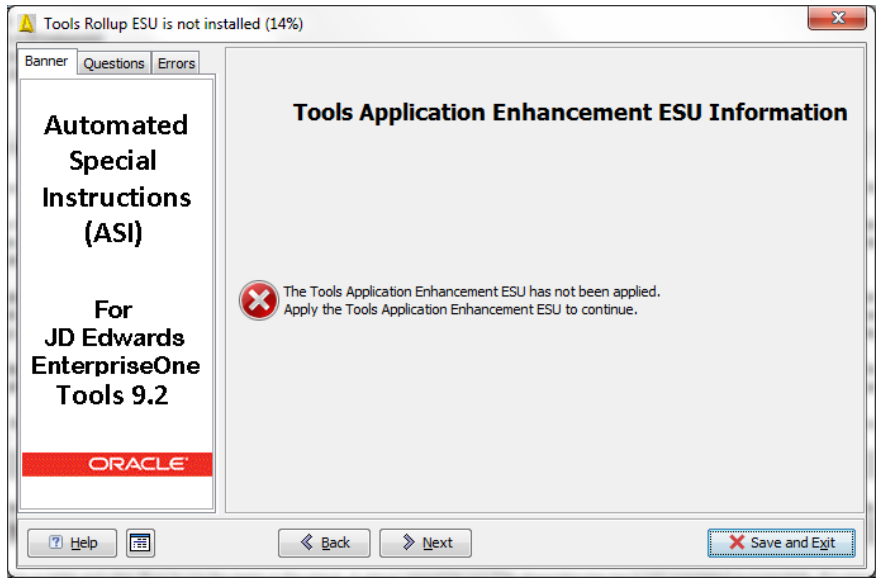
#### Transaction Data



If this dialog box appears, click yes.

#### Tools Rollup ESU

The following prompt displays when the ASI recognizes that the Deployment Server has an older Tools Application Rollup ESU. Processing will continue when the ASI detects the current Tools Rollup ESU.









**Oracle Corporation, World Headquarters**  
500 Oracle Parkway  
Redwood Shores, CA 94065, USA

**Worldwide Inquiries**  
Phone: +1.650.506.7000  
Fax: +1.650.506.7200

CONNECT WITH US

-  [blogs.oracle.com/oracle](http://blogs.oracle.com/oracle)
-  [facebook.com/oracle](https://facebook.com/oracle)
-  [twitter.com/oracle](https://twitter.com/oracle)
-  [oracle.com](http://oracle.com)

**Hardware and Software, Engineered to Work Together**

Copyright © 2015, Oracle and/or its affiliates. All rights reserved. This document is provided for information purposes only, and the contents hereof are subject to change without notice. This document is not warranted to be error-free, nor subject to any other warranties or conditions, whether expressed orally or implied in law, including implied warranties and conditions of merchantability or fitness for a particular purpose. We specifically disclaim any liability with respect to this document, and no contractual obligations are formed either directly or indirectly by this document. This document may not be reproduced or transmitted in any form or by any means, electronic or mechanical, for any purpose, without our prior written permission.

Oracle and Java are registered trademarks of Oracle and/or its affiliates. Other names may be trademarks of their respective owners.

Intel and Intel Xeon are trademarks or registered trademarks of Intel Corporation. All SPARC trademarks are used under license and are trademarks or registered trademarks of SPARC International, Inc. AMD, Opteron, the AMD logo, and the AMD Opteron logo are trademarks or registered trademarks of Advanced Micro Devices. UNIX is a registered trademark of The Open Group. 0116