

Planning in Oracle EPM Cloud

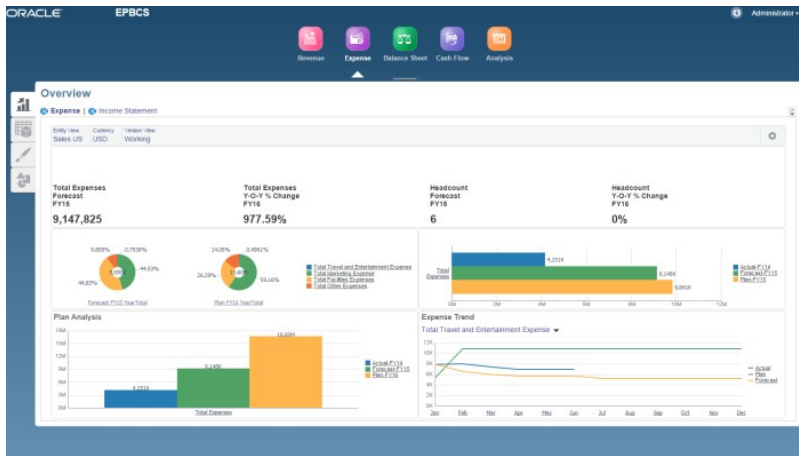
It's simply 'planning made easy'... Spend more time running your business, and less time, maintaining planning processes. Planning is a purpose-built business process available in the Oracle EPM Cloud that is a perfect fit for both corporate finance as well as operational planners throughout the enterprise (such as sales, marketing, HR, IT, and the lines of business.). It empowers operational planners with flexibility, scalability and the ownership to plan the way they want, while still offering the transparency and control required for corporate finance.

PLAN THE WAY YOU LIKE

Planning is a match for the way you run your business. This solution provides the freedom of choice to you as a customer to deploy a solution that meets your specific needs. You can either leverage the out of the box best-in-class integrated strategy, financial, workforce, capital, and projects planning frameworks with high configurability, or you can build a focused customized solution that is tailored for their specific use case. It's the best of both worlds in a single solution. Some planning tools strive for simplicity. Others strive for flexibility. This solution accomplishes both by providing an option to choose a solution that meets the business need, all while maintaining the ease and upgradability of a cloud-based planning solution.

Key Business Benefits

- Create your own custom planning and forecasting models or get up and running quickly with purpose-built planning models that include prebuilt calculations, dashboards, and reports. Easy to use. Easy to maintain
- Scalability to address both operational and finance planning processes
- Intuitive business wizards allow you to evolve your planning processes as your business changes
- Powerful analytics, dashboards, what-if, and predictive capabilities give you unparalleled insight into your business
- No capex infrastructure investments required in the cloud



Configurable dashboards make it easy to quickly visualize your plans and forecasts in real-time Auto-reconciliations

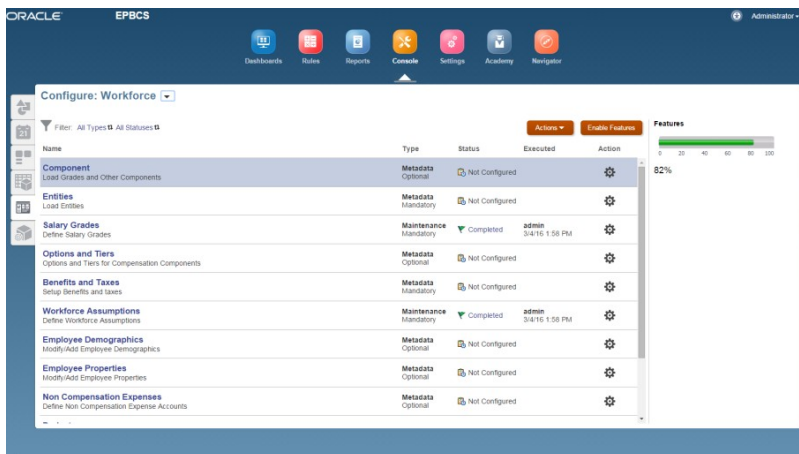
OUT OF THE BOX FUNCTIONAL VALUE

The out-of-the-box planning content is not just unsupported 'starter templates' from an 'app store'. Instead, it's innovative new modules that can be tailored to your specific needs yet remains upgradable by Oracle. Do you think your planning processes are too unique for out-of-the-box planning content? It's not an 'all or nothing' decision with Planning. Take advantage of configuration 'mash-ups' that allow you to combine configured processes with pre-built planning components from Oracle. The library of pre-built planning components such as models, dashboards, reports, KPIs and planning accelerators continues to grow. Only use the components that you prefer, but keep an eye out for new useful components that come available with each new release.

BE UP AND RUNNING IN NO TIME

The best practice planning modules are designed to be up and running with minimal effort and are easy to maintain as your business planning needs evolve. This is accomplished through simple-to-use wizards. Instead, of needing to have deep understanding of the product, you simply answer business questions in the step-by-step wizards. This allows even a technology novice to design complex planning processes.

The configurable planning framework provides immediate value by getting you up and running quickly with a targeted planning process. Then, it allows you to enhance and mature your planning processes over time. Instead of long implementations, you can establish quick success and mature your planning process in a more agile manner – building on the success of each new process that you enable.



Intuitive business wizards make it easy to 'enable' only the features that you want, then to quickly configure calculations and processes.

Key Features

- **Financials** – Fully integrated financial statement planning across the income statement, balance sheet, and cash flow
- **Strategy** – quickly create long-range forecast models using built-in sophisticated scenario modeling capabilities, Monte Carlo simulation, and debt and capital structure management features
- **Workforce** – Financial workforce planning for compensation spend by employee and/or job code
- **Integration to HCM** – Pre-built integration to Oracle HCM Cloud and seamless cloud-to-cloud integration to 3rd party HCM solutions to align workforce and strategic priorities
- **Projects** – Project financial planning for project-oriented industries and departments (e.g. IT, Marketing, R&D, etc.)
- **Capital** – A Capital asset process for detailed planning on the impact of new and existing assets
- **Integration to CX** – Pre-built integration to Oracle CX Cloud and seamless cloud-to-cloud integration to 3rd party CX solutions for sales planning alignment
- A powerful Excel add-in, Smart View, for ad hoc analysis and Excel-based interactions with your plan
- Integrated predictive planning capabilities that allow you to create forecasts based on historical actual data
- Support for hybrid cloud deployments with deep integration to on-premises systems

BEST-PRACTICE MODULES

Planning in the Oracle EPM Cloud includes pre-built modules that can be used to address your planning needs. The modules can be used by both finance and operational planners. They can also be used in their entirety or mashed-up with configured processes to quickly deliver value to your planning.

- **Strategy** – The ‘Strategy’ module is purpose-built for scenario modeling. It includes rich features for side-by-side financial and operational analysis of numerous business scenarios. End users can easily change assumptions, model logic, and mix-and-match scenarios on the fly in seconds. It can be used by both corporate/group users as well as users in the business units. For those users responsible for the strategic direction of the company, like corporate development, it also includes robust financial logic for the entire trial balance (income statement, balance sheet, and cash flow), treasury features, and mergers & acquisitions.
- **Financials** – The ‘Financials’ module is a fully integrated financial statement planning solution across the income statement, balance sheet, and cash flow. For example, the integration ensures that changes on the income statement automatically roll to the balance sheet and cash flow. Importantly, the Financials is constructed into four sub-process that can be incrementally enabled: Revenue, Expense, Balance Sheet, and Cash Flow. This allows you to use a single sub-process – such as Expense planning – or any combination of the sub-processes in the module.
- **Workforce** – The ‘Workforce’ module addresses your planning needs related to employees across the enterprise. In most enterprises, the workforce is one of the larger expenses on the income statement. Furthermore, the effectiveness of the workforce is crucial in ensuring the enterprise meets its strategic objectives. Therefore, it’s a crucial planning process. This module addresses the needs of both Finance and HR. It addresses compensation spend by employee and/or job code and integrates with your HCM systems and strategic workforce planning for a complete solution to manage employee budgets, skills, and talent— now and in the future.
- **Projects** – The ‘Projects’ module is a planning pattern that is suitable for numerous uses. Project-oriented industries will benefit from the detailed project financial planning process that allows for granular planning for employees, contractors, materials, and costs associated with large scale projects. Projects is also well-suit for project-oriented departments in any enterprise (e.g. IT, Marketing, R&D, etc.) that need a more streamlined approach to planning projects.
- **Capital** – The ‘Capital’ module addresses planning needs associated with new and existing assets, as well as intangibles. The module accounts for long-range asset-related impacts across the income statement, balance sheet, and cash flow. Capital is very appropriate for enterprises that have significant capital assets.

FLEXIBLE CUSTOMIZABLE SOLUTION

Business processes can vary across industries and based on size and complexity of the business. Using Oracle EPM Cloud, customers can create customized highly flexible and scalable solutions to suit their targeted business needs within and beyond finance. The solution is complete, and includes both an intuitive web interface as well as a powerful Excel Add-in, Smart View. Both the web interface and Smart View include rich set capabilities to satisfy any business planning, modeling, analysis and reporting need.

ROBUST MODELING WITH SANDBOXING AND PREDICTIVE ANALYTICS

Companies today are faced with a rapidly changing business environment. Demand is volatile, costs fluctuate, and the supplier landscape is constantly changing. A key requirement to stay ahead of the competition is to understand this volatility and model for these financial and operational changes quickly based on fast changing assumptions.

Planning provides sophisticated modeling and predictive analytical capabilities that allow users to create multiple what-if versions and slice and dice data based on various what if assumptions. Planning also has a rolling forecast wizard which makes it simple to implement a drive- based rolling forecast process in which the forecasting time horizon rolls forwards across years with the passage of time.

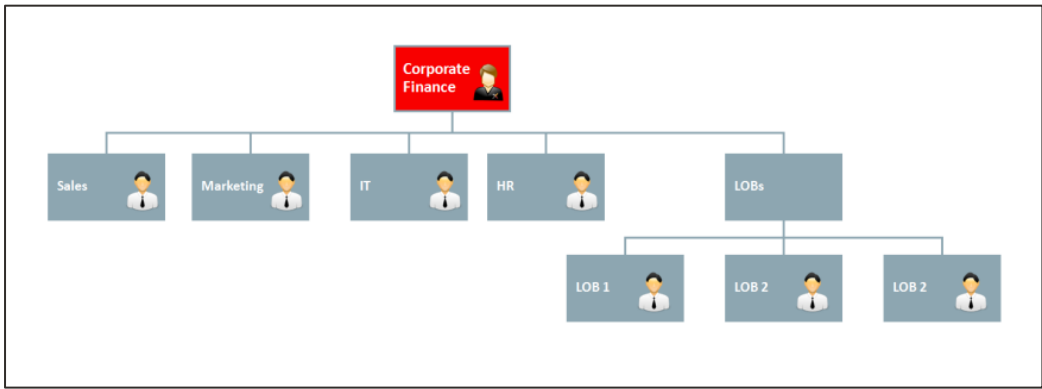
The sophisticated built in Scenario Modeling framework allows end users to quickly create long-range and focused on the fly forecast models for fast-changing business dynamics using built-in scenario blending, Monte Carlo simulation, and debt and capital structure management features.

ALIGN ENTERPRISE PLANNING PROCESSES

Planning should not be limited to corporate finance. The organizations that are most successful at enterprise planning connect operational planners to the corporate finance plans in a manner that provides synergy to both sets of stakeholders. Planning helps you to accomplish this through a unique 'federated' architecture. The architecture allows you to connect and align related planning processes across the enterprise while still maintaining the independence for the individual planners. The architecture is based on two fundamental principles:

- **Operational independence** – For operational planners to be successful, they need 'ownership' of their planning processes. First, they need to plan at an operational level of detail (e.g. a level of detail not typically required by finance). This could be different planning dimensionality, a more granular level of data, and/or a different forecasting cadence. The federated architecture has unparalleled scalability to address detailed planning. The system has a unique way of dealing with sparse data and in-memory calculations to easily handle volumes of data required for operational planning. Furthermore, operational planners need the ability to own and operate their planning system without heavy reliance on system administrators at corporate finance. This is where the value of the configuration wizards comes into play. These allow operational planners to take ownership for the maintenance and administration of the system.
- **Synergy between plans** – Where possible the plans must be connected to create synergy and alignment. For example, the various operational plans (e.g. sales and marketing, supply chain, HR, IT, etc.) need to be connected to corporate finance in a manner that ensures strong controls and governance. The solution's federated architecture can share data and process between plans where appropriate - thereby allowing synergy and collaboration between planners, yet still allow independence and privacy for each set of planners.

The cloud makes it more practical to extend planning across the enterprise. However, instead of having numerous disconnected plans, the federated architecture of Planning in the Oracle EPM Cloud allows you to ensure alignment and synergy across the planning spectrum. This allows you to instill a culture of planning around the enterprise ,and to mine the wisdom of the planners that are closest to the operational details.



Planning allows you to create federated planning processes – ensuring independence, but also realizing synergy between related plans

INTEGRATION AND HYBRID CLOUD DEPLOYMENT

Well-designed planning processes are not isolated ‘data islands. Instead, they rely on the other operational and financial systems from around the enterprise. Some of these systems will reside on-premises while others may be in the cloud. Planning is architected to thrive within hybrid cloud deployments. For example, the solution includes a range of data management options that allow you to pick the right tool for the job. In some cases, basic flat-file imports may be your tool of choice. These are quick and easy, and anyone can do it. In other cases, you may prefer more highly automated data transformation and load processes from source systems (on-premises or in the cloud). Finally, you may prefer certified adapters or the ability to configure rich integration using the secure RESTful API. In all cases, Planning has the right tool for the job.

The solution also supports single sign-on (SSO) and reporting across other on-premises enterprise performance planning systems – such as Oracle Hyperion Planning, Hyperion Financial Management, etc. This allows you to leverage your investment in existing financial systems while still realizing the benefits of a cloud-based planning solution.

IN SUMMARY

As a steward of enterprise performance management at your company, it is imperative that you have a planning solution that makes you more effective. Planning in the Oracle EPM Cloud offers a very compelling value proposition for both finance and operational planners. The preceding is just a quick summary of the solutions value. For a more detailed discussion, contact your Oracle account manager.

ORACLE ENTERPRISE PERFORMANCE MANAGEMENT APPLICATIONS

Oracle Enterprise Performance Management (EPM) Cloud is the only complete and connected EPM solution delivering the agility you need to outperform in today's constantly evolving business landscape.

Related EPM Business Processes

Oracle Enterprise Performance Management Cloud provides the following capabilities:

- Narrative Reporting
- Financial Consolidation and Close
- Account Reconciliation
- Planning
- Profitability and Cost Management
- Tax Reporting
- Enterprise Data Management

Other Related Solutions

- Oracle ERP Cloud
- Oracle SCM Cloud
- Oracle HCM Cloud
- Oracle CX Cloud

CONNECT WITH US

Call +1.800.ORACLE1 or visit oracle.com.
Outside North America, find your local office at oracle.com/contact.

 blogs.oracle.com

 facebook.com/oracle

 twitter.com/oracle

Copyright © 2020, Oracle and/or its affiliates. All rights reserved. This document is provided for information purposes only, and the contents hereof are subject to change without notice. This document is not warranted to be error-free, nor subject to any other warranties or conditions, whether expressed orally or implied in law, including implied warranties and conditions of merchantability or fitness for a particular purpose. We specifically disclaim any liability with respect to this document, and no contractual obligations are formed either directly or indirectly by this document. This document may not be reproduced or transmitted in any form or by any means, electronic or mechanical, for any purpose, without our prior written permission.

Oracle and Java are registered trademarks of Oracle and/or its affiliates. Other names may be trademarks of their respective owners.

Intel and Intel Xeon are trademarks or registered trademarks of Intel Corporation. All SPARC trademarks are used under license and are trademarks or registered trademarks of SPARC International, Inc. AMD, Opteron, the AMD logo, and the AMD Opteron logo are trademarks or registered trademarks of Advanced Micro Devices. UNIX is a registered trademark of The Open Group. 0120

Disclaimer: This document is for informational purposes. It is not a commitment to deliver any material, code, or functionality, and should not be relied upon in making purchasing decisions. The development, release, timing, and pricing of any features or functionality described in this document may change and remains at the sole discretion of Oracle Corporation.

