

ORACLE


# Accelerate Your AI Journey with Ready-to-Launch Solutions

Leverage OCI AI Accelerator Packs

---

# Agenda

- Welcome & Introduction
- Gen AI in the Enterprise & Challenges
- OCI AI Accelerator Packs Introduction
- Demo
- Getting Started
- Q&A

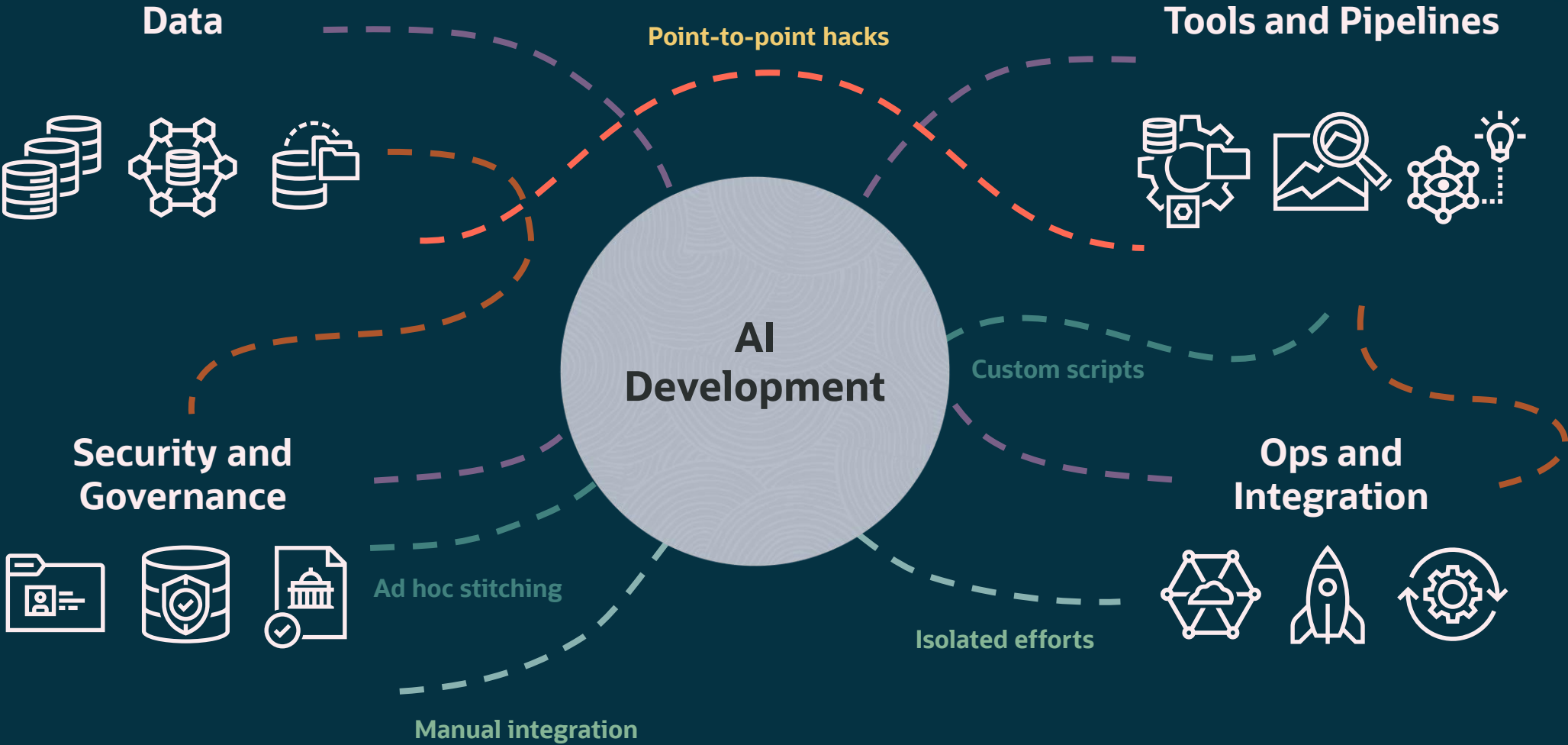


“Simplicity is the ultimate sophistication..”

---

Leonardo da Vinci

# Building AI Applications Has Become Increasingly Complex

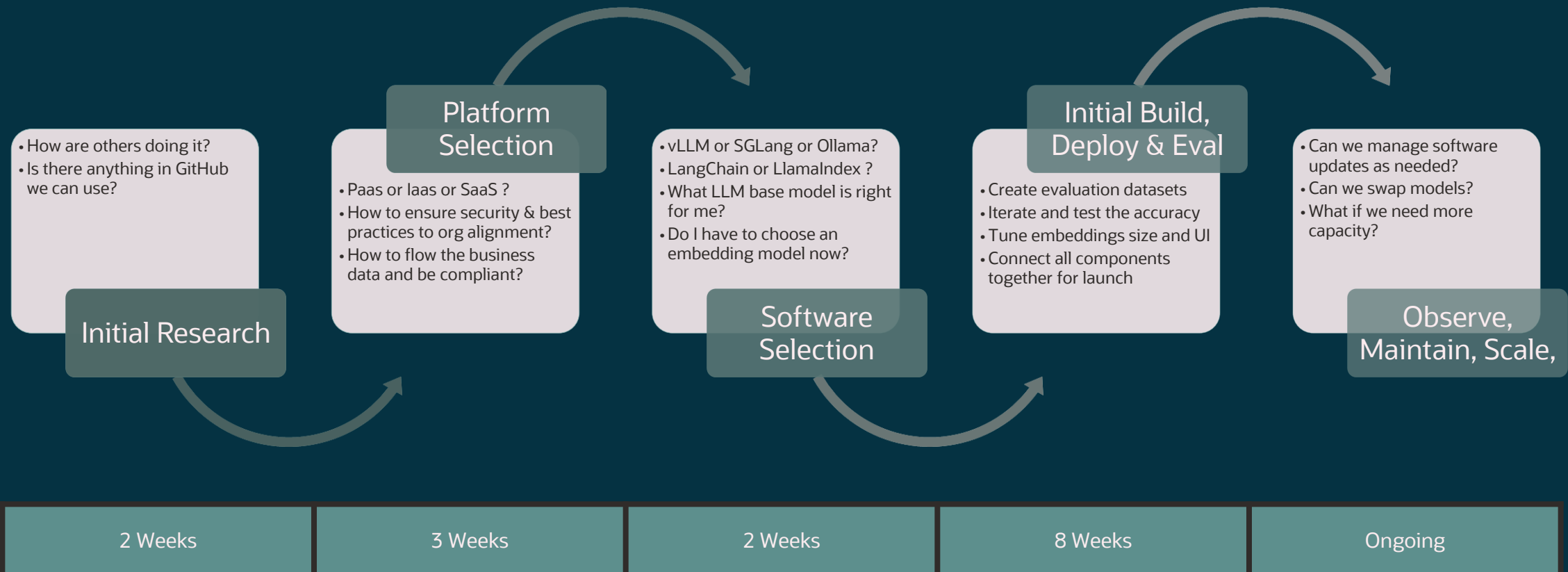


# Traditional AI projects start with components and tools

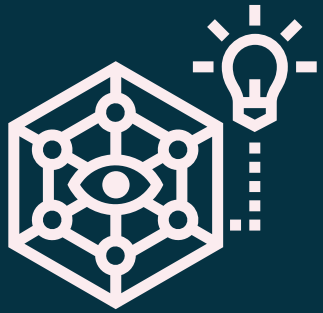


IT teams leverage various components to design and build the tools businesses need

# Lengthy Development Cycles Can Slow AI Innovation



# What if you could access ready-made solutions for your most common use cases?



## AI for outcomes

Focus on business impactful AI-driven *use cases* rather than complex deployments or backend infrastructure.



## Flexible and Affordable

Scale AI on your terms with month-by-month access, ideal for testing ideas and building momentum with less financial risk.



## Built for your ecosystem

Empower your teams and partners to build on OCI's trusted foundation and integrate with your Oracle apps.

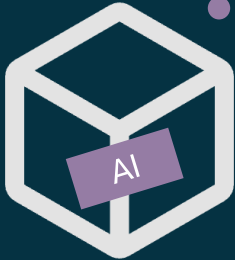
# AI Accelerators Packs start with outcomes



IT teams leverage various components to design and build the tools businesses need

Create a solution for select use cases

... and deploy as a packaged offering



Business Leaders select outcomes that make tangible impact with clear ROI



# What Are OCI AI Accelerator Packs?



**Ready-to-use,  
full-stack AI solutions**



## **Deploy in minutes, not months**

One-click deployable AI solutions built for specific business outcomes.



## **Full stack, not just infrastructure**

Bundle OCI infrastructure, AI services, curated open-source software, and NVIDIA AI Enterprise components into a single deployable unit.

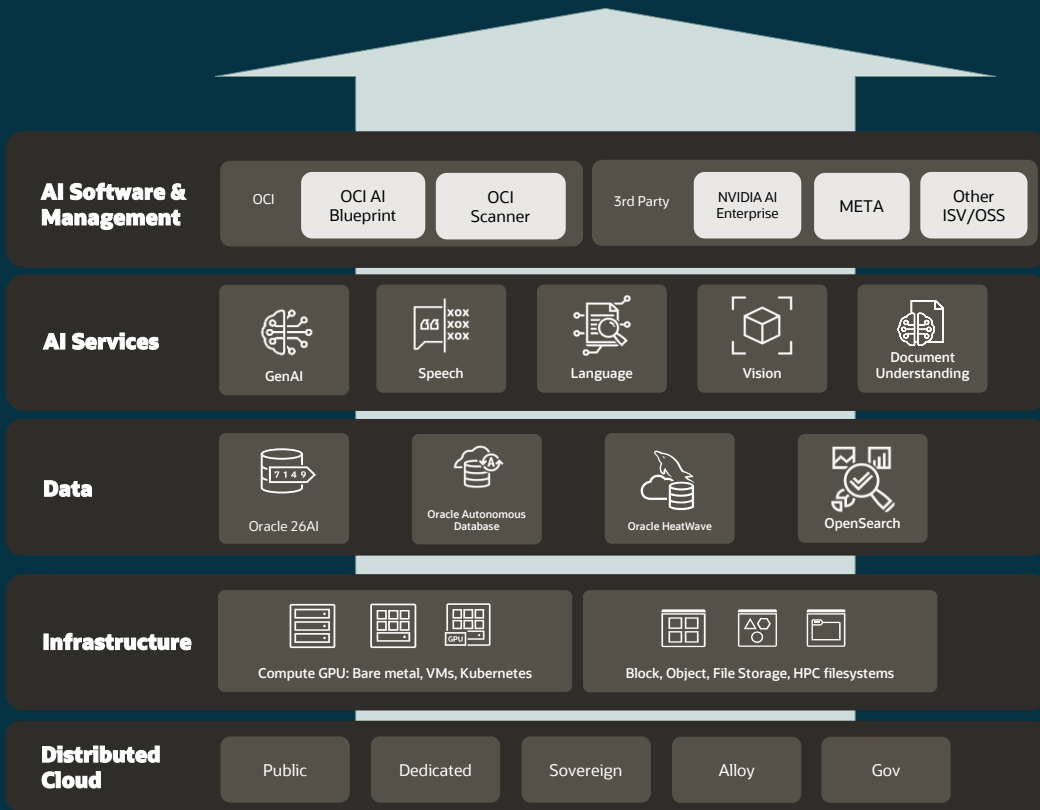


## **Customer-owned & enterprise-ready**

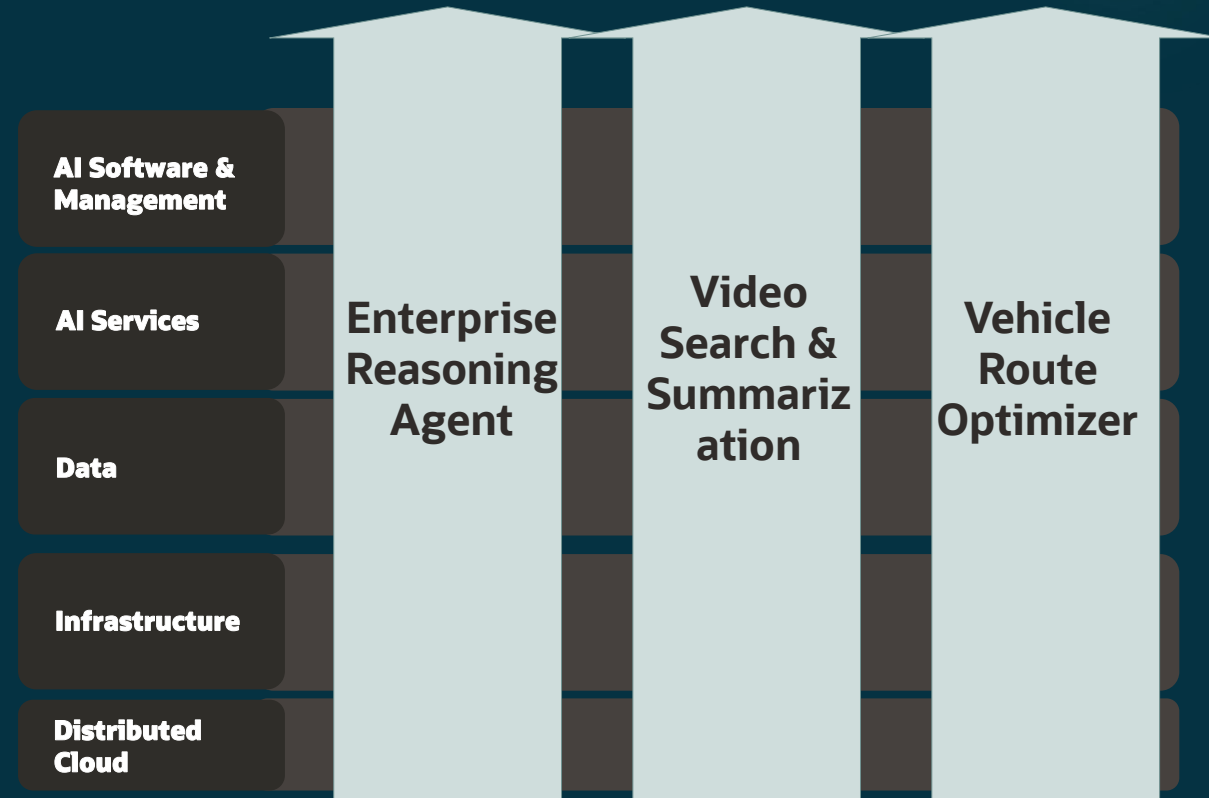
Deploys into your OCI tenancy. You own the data, the models, the architecture. 80+ compliance certifications built in.



# OCI AI Accelerator Packs: From AI Building Blocks to Complete Solutions



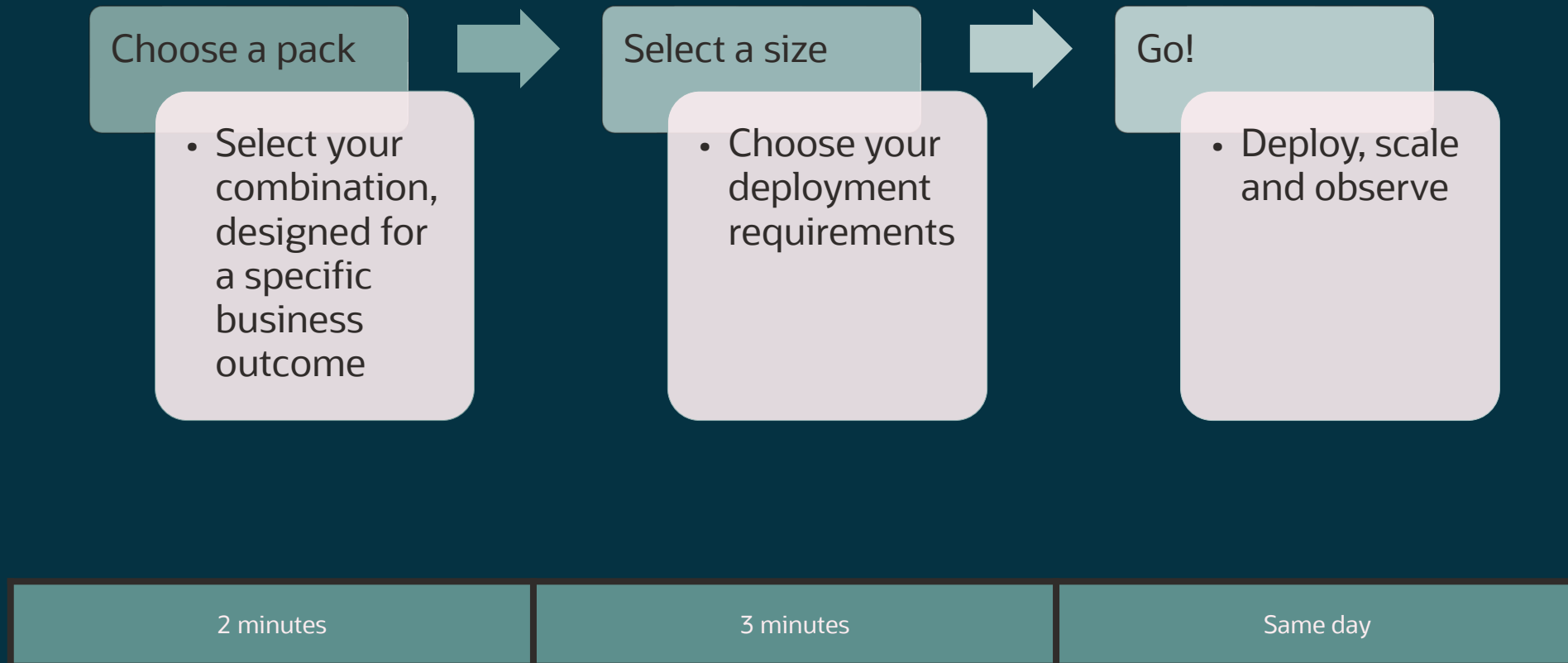
Maximum flexibility, maximum choice



Deploy in minutes • Own & control the architecture • Extend as needed



# Deploy in minutes, not months, from the OCI Console



# 'Industry blueprints' already exist to solve complex, repeatable industry-wide problems



## Global media company

### EV fleet transition creates operational inefficiencies

- 11k field engineer hours lost to EV charging
- Higher costs vs. diesel vans
- Missed appointments rose from 3% to 10%

**AI solution:** Build GPU accelerated intelligent routing and scheduling system

## Construction company

### Managing complex, multi-BN construction projects is challenging

- XXL construction & engineering projects often face cost and timeline challenges
- Complex to orchestrate and monitor hundreds of vendors & partners

**AI solution:** AI agent monitors millions of files and content, providing a digital command centre

## Television Company

### Manual content review is slow and costly

- Millions spent annually on 3rd-party reviewers
- Process is manual and time-consuming
- Reviewing for obscenity, violence, placement

**AI solution:** Automate media monitoring via AI to achieve instant content, cheap reviews

## Utility Company

### Field service companion to bring AI insights to the edge

- Limited AI support for field technicians results in slower, less efficient service
- Knowledge gaps, manual lookups, and documentation needs reduce productivity.

**AI solution:** use AI companion to guide user, document work and support at every step

# AI Accelerator Packs – Combining compute, GPU, storage and inferencing

## Optimization (Route Optimization)

**Best for:** finding the best plan across many constraints (time, people, locations, priorities, skills)

- EV routing and charging-aware scheduling
- Technician scheduling and dispatch
- Capacity planning (bays, tools, shifts, depots)
- Last-mile and parts logistics planning
- “What-if” scenario planning (simulate before rollout)

## Video search and summarisation (VSS)

**Best for:** finding, detecting, and summarising key moments in video content

- Safety and security event detection
- Incident investigation and evidence clips
- Compliance review and reporting
- Site monitoring summaries (what, when, where)
- Quality checks from footage (anomalies and exceptions)

## Enterprise knowledge and reasoning (AI-Q)

**Best for:** turning information into answers, summaries, structured reports, and decision support

- Q&A across knowledge bases (with sources)
- Case triage and summarisation
- Research briefs (suppliers, sites, issues, context)
- Root-cause exploration across documents
- Handovers and decision logs (capture and summarize)



# Optimization (Route Optimization)

*Finding the best plan  
across many constraints  
(time, people, locations,  
priorities, skills)*



# EV-fleet optimization deep-dive

## 1. Problem

- Why the EV routing transition is challenging
- What breaks in daily operations

## 2. Solution

- How real-time optimization works and what it enables

## 3. Impact

- Key takeaways
- Typical EV AI optimization value drivers

# Why the EV transition is operationally complex



## ICE Vehicles

Range	400+ miles
Range volatility	Minimal
Refuel time	5 minutes
Fuel prices	Consistent
Infrastructure	Everywhere
Route planning	Simple
Schedule impact	Minimal



## EV Vehicles

Range	100-250 miles
Range volatility	High
Charging time	30+ minutes
Energy prices	Variable
Infrastructure	Limited
Route planning	Complex
Schedule impact	Significant

# Where EV routing breaks in daily operations

## Traditional routing



## EV-optimised routing



**D** Depot   **●** Customer job   **⚡** Charging point   **●** Vehicle



### Overruns

(jobs take longer, late starts, parts missing)



### Disruptions

(traffic, cancellations, urgent jobs, no-shows)



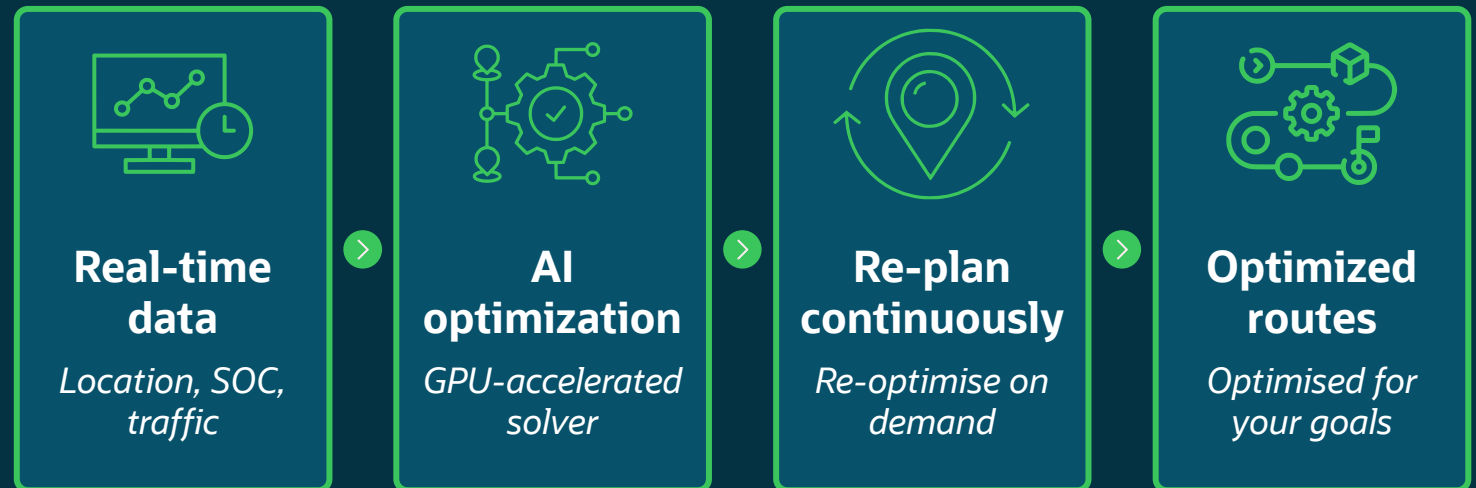
### Charging

(availability, speed, queues, initial SOC)

**Without fast re-planning, constraints compound into missed jobs & firefighting**

**Re-optimize in  
near real-time  
as conditions  
change**

## GPU-accelerated **intelligent routing**



***GPU acceleration enables re-optimization in under  
60 seconds on demand, throughout the day***

# Takeaways – what this changes for operations

- 1. Real-time constraint-aware dispatch**  
*Fewer missed jobs & better utilisation by planning for constraints, not just distance*
- 2. Charging-aware routing**  
*Charging becomes part of the plan rather than an exception*
- 3. Intraday disruption recovery**  
*Re-optimize across the fleet in minutes – planners focus on exceptions*
- 4. Natural-language “what-if” simulations**  
*Test scenarios & constraints in plain language to de-risk rollout and quantify impact*

*From static plans and firefighting to  
continuous optimization and guided decisions*

# Why Oracle for AI?

## Data and apps

With almost 50 years of managing the world's data, Oracle brings AI to your enterprise data and apps with reduced complexity.

## AI Infrastructure

Fast, flexible, and scalable AI infrastructure tailored to your needs, with flexible deployment options including dedicated regions, sovereign cloud, and multicloud database

## Security and Privacy

Security, privacy, and control embedded across the full AI stack for enterprise AI that you can trust.

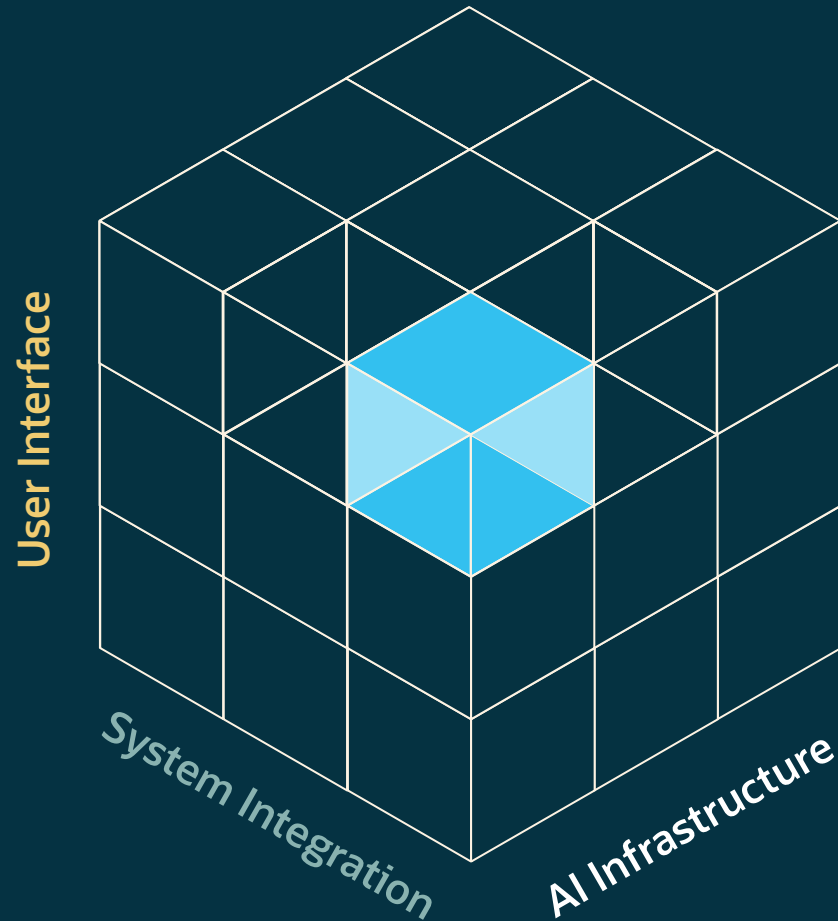
## Partnerships

Model providers, cloud partners, and system integrators that help you design, build, and operationalize enterprise AI anywhere.



# AI Accelerator Packs | Packaged AI solutions to make tangible business impact

*Built for quick time to value*



- 1. Out-of-the-box AI service**  
Delivered jointly by Oracle + Nvidia + SI, no GPU setup or engineering effort
- 2. Quick time-to-value**  
AI operationalized within customer's workflows
- 3. Clear ROI and roadmap**  
Projected savings and revenue upside before full rollout
- 4. One contract, one service**  
Fully governed, production-ready AI with Oracle + NVIDIA

# Getting Started and Q&A



**Visit the product page**



**Read the launch blog**



**Launch from the OCI Console**



ORACLE